



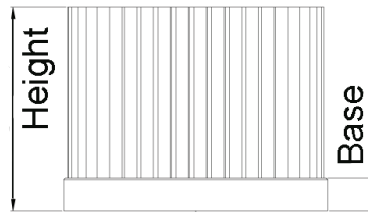
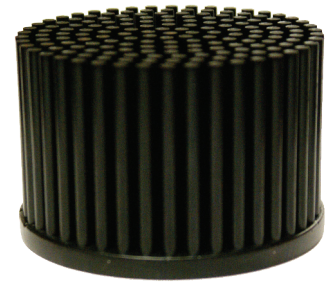
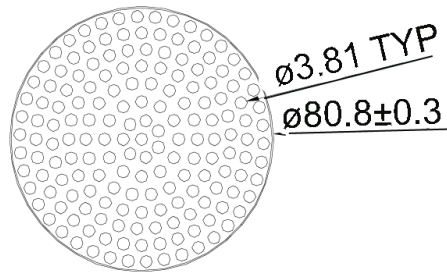
CML8001 Series Ordering Information

Part	Height	Base	Seq #
CML8001-	52	- 10	- 101
CML8001-	52	- 8	- 101
CML8001-	52	- 6	- 101

LED Heat Sink Specification



1. Material: Al 6063
2. Dimension:
Foot print: Ø80mm
3. Finish: Black Anodize



Performance

Heat Source (LxW)	37x37mm
-------------------	---------

Results Based On Natural Convection	
Height	oC/W
CML8001-52-10-101	3.0
CML8001-52-8-101	3.4
CML8001-52-6-101	3.8