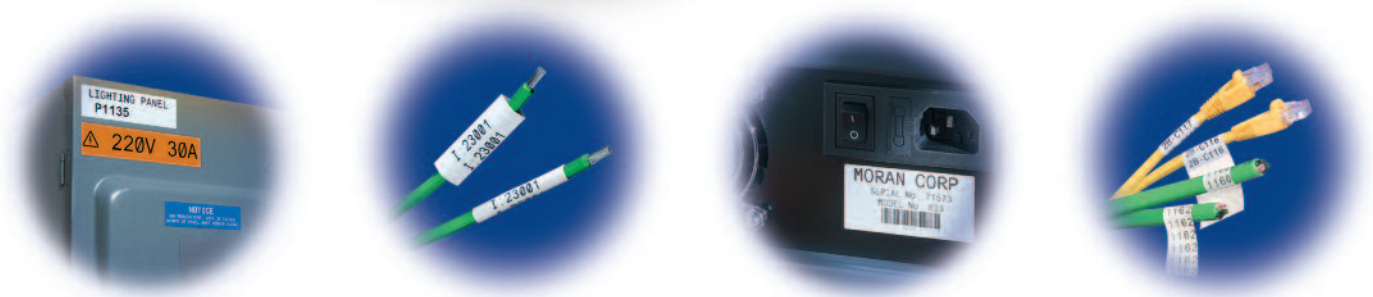


The NEW TLS 2200® Thermal Labeling System gives you even more power.



The TLS 2200® printer features increased processing power and enhanced functionality!

TLS 2200® Version 4.0 printer delivers the power to create custom labels in seconds.



The new TLS 2200® Thermal Labeling System v4.0 offers a rugged, portable, and easy-to-use labeling solution – now with even more features. With crisp, thermal-transfer quality printing and a variety of durable materials, you can create custom labels for the most demanding applications including product bar code ID, electrical and datacomm marking, laboratory ID, security ID, and more.

Print labels faster

Version 4.0 features increased processing speed with nearly 100% faster data processing.

Clearer graphical display

Even in low light conditions, the increased screen resolution and contrast make on-screen text easier to read.

New Sleep Mode

Extends battery life and increases productivity by allowing users to set the printer to “sleep” after 1, 3 or 5 minutes of non-use.

More bar code symbologies

Version 4.0 now includes Code 128, IFT 25, and Codabar.

Rugged Industrial Design

Tough, drop-tested construction

PC connectivity

With Brady LabelMark™ Labeling Software, users can design labels on a PC and print directly to a TLS 2200 printer.

Table of Contents:

2-3	TLS 2200 and TLS-PC Link Thermal Labeling Systems
4	Printing Options and Font Sizing
5	Labeling Software
6-7	Printing Applications
8-9	Materials Chart and Ribbon Cross-Reference Guide
10	Label Ordering Guide
10-26	Label Product Charts
27	More Brady Printers

TLS 2200® Thermal Labeling System

Part Number: TLS2200

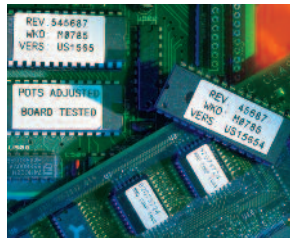
Printer (system includes hard case, R6210 ribbon, battery pack, battery charger, Quick Start Guide, manual, communications cable, test labels (PTL-19-423), one cleaning card)

- Prints over 500 labels between battery charges
- Weight 2.75 lbs (1.25 kg)
- Thermal transfer print mechanism 203 dpi (8 dots/mm)
- Labels up to 2" wide (50.8 mm)
- Print length up to 54" (1371 mm)
- FCC Class A approved
- Adjustable for 6 different widths of labels
- Built-in industrial label cutter
- Patent numbers D409,230; 5,918,989; 5,951,177; 6,113,293 and 6,142,686
- Custom TrueType font
- Print width 1.81" (46 mm)
- Two line liquid crystal display (LCD) 16 characters wide
- Operating temperature range: 40°F to 120°F (4°C to 49°C)
- UL and CUL listed battery charger: 120 V/60 hz input 9 VDC 183 mA output
- 6 month warranty, extended to 12 months with online product registration

TLS 2200 Thermal Labeling System Accessories

Part	Description	Part	Description
TLS2200-AC	AC adapter	TLS2200-SC	Soft side users case
TLS2200-BC	Battery charger	TLS2200-CABLE	Communications cable
TLS2200-BP	Battery pack	TLS2200-UPDISKS	Upgrade disks (includes 3.5" disks)
TLS2200-DC	Dust cover	TLS2200-UPKIT	Upgrade kit (includes 3.5" disks and cables)
TLS2200-HC	Hard side carrying case	PKC-5	Cleaning kit (includes 5 cleaning cards)
TLSHM-QUICKCH	Quick charger for battery	81701	USB to DB9 Serial Adapter Cable
TLS-AC-QC	TLS 2200 Printer, Quick Charger, and AC Adapter		

Make the connection to more powerful labeling options with the TLS-PC Link™ Printer.



The TLS-PC Link™ Thermal Labeling System is a rugged portable/desktop solution. Use the power of your PC for more versatile labeling options.

Versatile label options

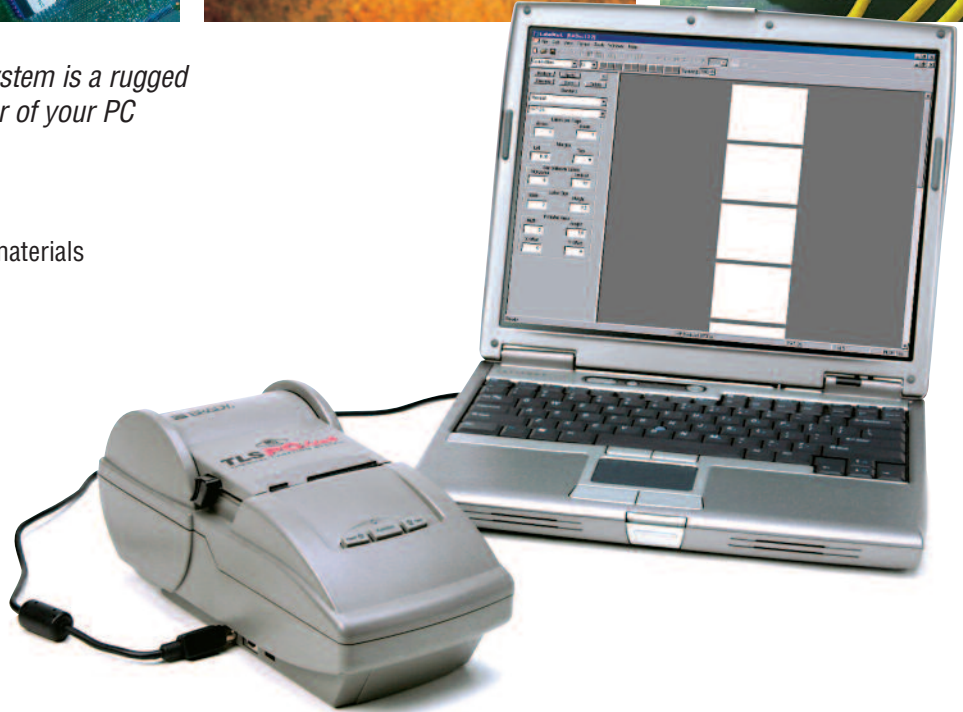
Uses all of the available TLS 2200 printer materials and ribbons, including bulk roll material.

Easy-to-use label design software

Brady LabelMark™ Labeling Software is included with your TLS-PC Link, and BradySoft™ 8 Label Design Software is also available for use with this system.

Windows™ driver included

This driver allows you to easily print labels from either Brady labeling software solution.



TLS-PC Link™ Thermal Labeling System

Part Number: TLSPC

Printer (system includes LabelMark™ Labeling Software, rechargeable battery pack, power supply/battery charger, R6210 ribbon, sample labels (PTL-19-423), Quick Start Guide, manual, communications cable, and Windows drivers)

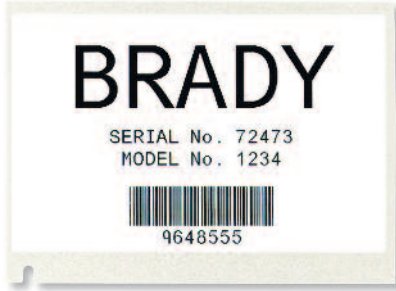
- Prints over 500 labels between battery charges
- Weight 2.50 lbs (1.14 kg)
- Thermal Transfer print mechanism 203 dpi (8 dots/mm)
- Labels up to 2" wide (50.8 mm)
- Print length up to 6" (152.4 mm)
- FCC Class A approved
- Adjustable for 6 different widths of labels
- Built-in industrial label cutter
- Patent numbers 5,918,989; 5,951,177; 6,113,293 and 6,142,686
- Custom TrueType font
- Print width 1.81" (46 mm)
- Operating temperature range: 40°F to 120°F (4°C to 49°C)
- UL and CUL listed AC adapter/battery charger: 120 V/60 hz input 12 VDC 3000 mA output

TLS-PC Link Thermal Labeling System Accessories

Part	Description
TLSPC-AC	Replacement power supply/battery charger
TLSPC-BP	Rechargeable battery pack
TLSPC-CABLE	Communications cable
PCK-5	Cleaning kit (includes 5 cleaning cards)

Easily Create Your Own Custom Labels.

TLS 2200® Thermal Labeling System

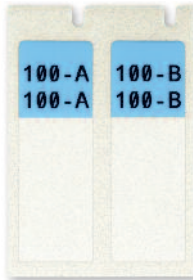


Variable Font Sizes*

Variable font sizes range from 1 (4 point) to 19 (72 point). The maximum font size available depends on factors such as label size, number of characters, number of lines, as well as font sizes in other lines.

Autotext Sizing

The TLS 2200 Thermal Labeling System uses an automatic font sizing feature called autotext sizing. As you enter characters on the LCD, it instantly reads your label style, selects the most suitable type size, and registers it for printing.



Overriding Autotext

If you wish to select a specific font size for your label, the autotext feature can easily be overridden on a line-by-line basis.

Symbols

Standard electrical and telecommunications symbols are included.



Banner Printing

Continuous tape available in many different sizes, colors, and materials.

Variable Font Sizes

Font Number	Point Size	# Characters Per Line on a 1" x 1" Label	# of Lines on a 1" x 1" Label	Print Sample
1	4	28	12	ABC12345
2	5	24	10	ABC12345
3	6	19	9	ABC12345
4	7	16	7	ABC12345
5	9	14	7	ABC12345
6	10	12	6	ABC12345
7	11	10	5	ABC12345
8	13	8	4	ABC12345
9	14	8	4	ABC12345
10	17	7	3	ABC12345
11	20	5	3	ABC12345
12	23	5	2	ABC12345
13	26	4	2	ABC1234
14	28	4	2	ABC12345
(PC Link Only)	15	35	3	ABC123
15	36	3	1	ABC123
16	45	2	1	ABC12
17	51	2	1	ABC1
18	56	2	1	ABC1
(PC Link Only)	19	70	0	ABC
19	72	0	0	ABC

* An alternative electrical/datacomm font size set (1/8", 3/16", 1/4", 3/8", 7/16", 1/2", 3/4", and 1.0") can be downloaded for free from the www.bradyid.com website.

Expand Your Functionality

LabelMark™ Labeling Software (included with TLS-PC Link™ Thermal Labeling System)

LabelMark Labeling Software allows users to design, edit, and print their Brady labels. Brady LabelMark software is best suited for applications in telecomm, electrical, and industrial markets. Can also be used with TLS 2200® Thermal Labeling System.

Easy to Use Graphical Interface Label Design

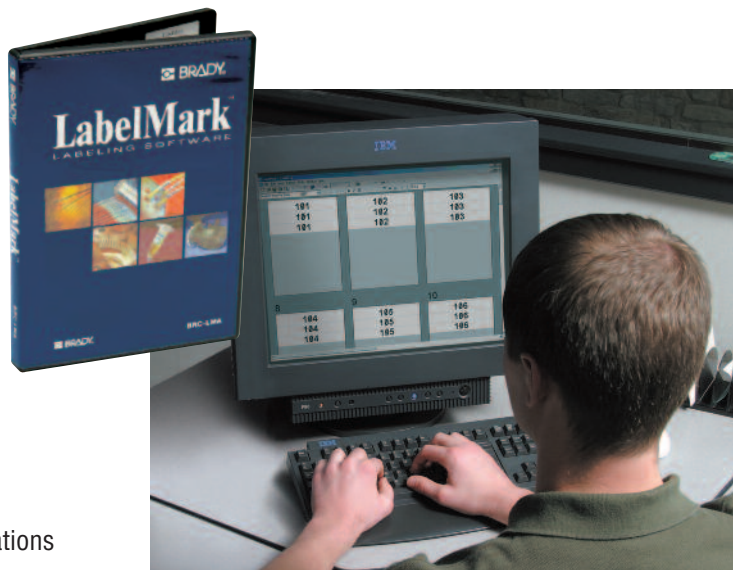
- Option for line-edit or free-form mode for label design
- Several common barcode symbologies available
- Ability to import graphical images
- ASCII and ODBC data import capabilities

Label Editing

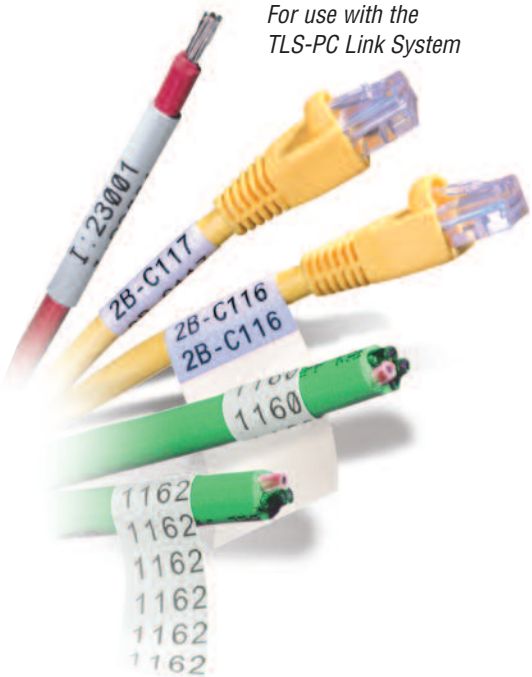
- Easy to use single screen editing
- Multiple document interface for working with different labels at the same time
- Ability to flip/flop data on label (i.e. flip/flop “to”/“from” order)

Label Printing

- Works with all Brady media, stock and custom formats
- Works with a variety of different printers to suit various applications
- Direct printing to **Brady's TLS 2200® and TLS-PC Link™** printers



For use with the
TLS-PC Link System



BradySoft™ 8 Label Design Software

With BradySoft 8 Label Design Software, you can create labels that help your organization manage assets and resources, control distribution channels and stock levels, track documents, or manage data records – all with one powerful labeling program.

Design tools for fast label design

No special training required with these intuitive, easy-to-use features:

- Organize data from external data sources
- Import data from multiple database connections
- Switch from TrueType fonts to printer resident fonts

Don't re-type — import for faster, more accurate labels

Easily import information from spreadsheets and data tables right onto your labels with fewer errors.

- Database Connection Wizard
- Label Design Wizard that's intuitive and easy to use
- Database tables can be easily created, modified, or deleted
- Database Manager Tool lets you print directly from the database
- Label preview

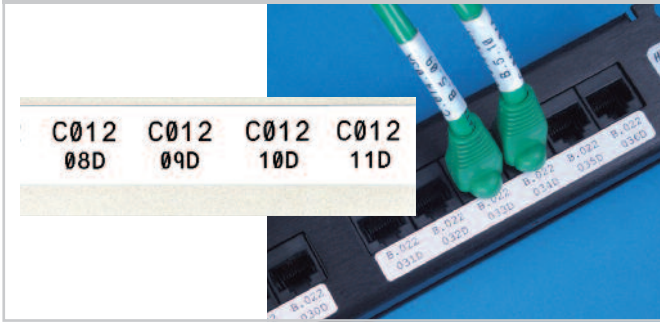
No-hassle, automated label printing

BradySoft 8 Label Design Software makes label printing faster and easier with these flexible options:

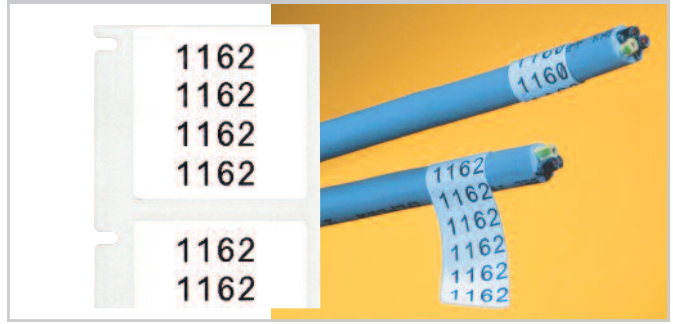
- Simplify printing with five different print dialog options
- Customize parameters for exporting data
- Print directly from “Find Record” results
- Encode complicated labels for trouble-free printing

Printing Applications

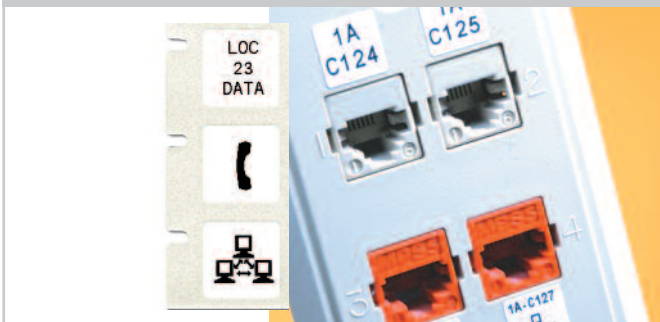
PATCH PANEL



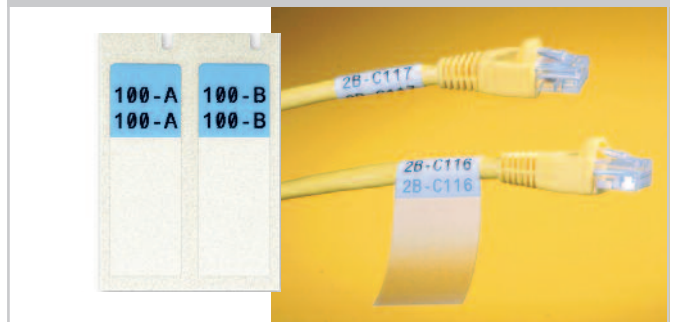
WIRE AND CABLE WRAP AROUND LABELS



FACE PLATE ID



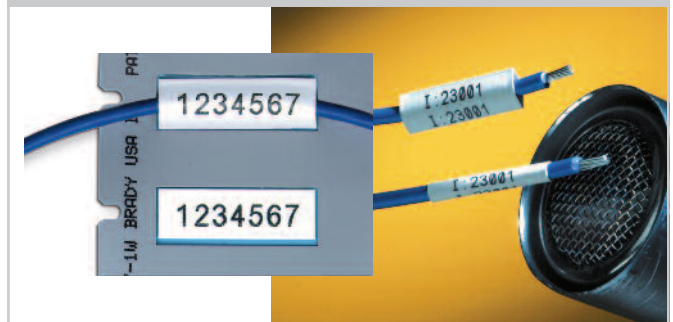
WIRE AND CABLE SELF-LAMINATING LABELS



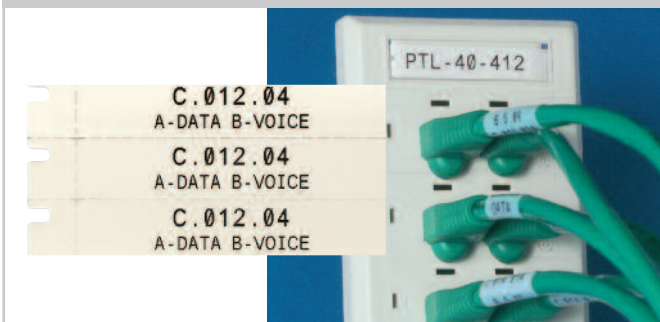
TERMINAL BLOCK



WIRE AND CABLE SLEEVES



DESI-STRIP INSERT



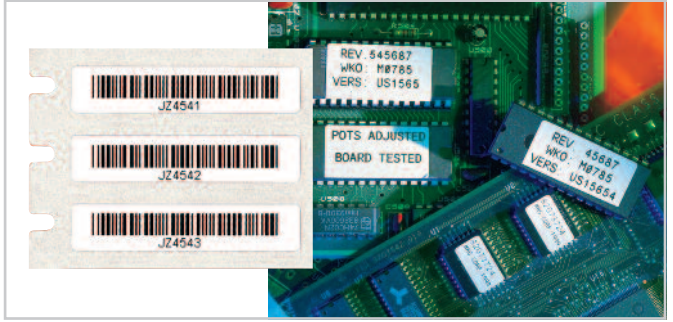
FLAG LABELS



TAG PRINTING



CIRCUIT BOARD & COMPONENT LABELING



ELECTRICAL PANEL ID



LABORATORY ID



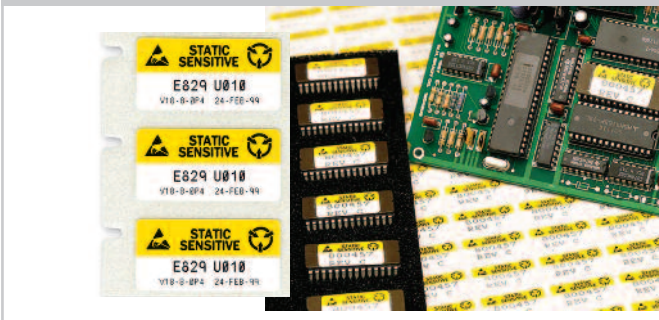
INDUSTRIAL BAR CODE LABELING



SECURITY ID









ASSET IDENTIFICATION








CUSTOM LABELING



Materials and Ribbon Cross Reference Chart

Brady Material Number	Material Description	Ribbon	Color	Finish	Max. Service Temp. F°, (C°)	Application	Special Properties	Agency Approval(s)/ Compliance
B-109	BradyTag® Polyethylene Tag	R4310, R6210	White	Matte	120 (49) 30 days	Wire & Cable Marking, Panel ID, Voice/Data ID	Tear resistant, Excellent cold-weather performance	HF
B-145	Polyethylene Tag	R6210	Gray	Matte	212 (100) 30 days	Voice/Data ID	Tear resistant, 2-Side Printable	
B-321	BradySleeve™ Heat Shrink Polyolefin Sleeves	R6210	White	Matte	221 (105) 30 days	Panel ID, Wire & Cable Marking	Heat-shrinkable	
B-342	PermaSleeve™ Heat Shrink Polyolefin Sleeves	R4310	White, Yellow	Matte	267 (130) 30 days	Wire & Cable Marking, Panel ID	Heat-shrinkable, Self-Extinguishing	
B-351	Vinyl with permanent acrylic adhesive	R6010, R6210	White	Matte	212 (100) 30 days	Tamper Indicating	Fractures easily, prevents one-piece removal	
B-352	Vinyl with permanent acrylic adhesive	R4410*, R6010	Silver	Matte	212 (100) 30 days	Tamper Indicating	Fractures easily, prevents one-piece removal	
B-390	DuraSleeve® Polypropylene Inserts	R6010	White	Matte	212 (100) 1000 hrs.	Wire & Cable Marking, Panel ID	Rigid Inserts	HF
B-412	Polypropylene Tag	R4310, R6210	White	Matte	212 (100) 30 days	Voice/Data ID		
B-422	PermaShield™ Polyester with permanent acrylic adhesive	R4410*, R6010	White	Gloss	212 (100) 30 days	Circuit Board & Component ID		UL  
B-423	Polyester with permanent acrylic adhesive	R4410*, R6010, R6210	White	Gloss	248 (120) 30 days	Circuit Board & Component ID, Panel ID		UL   HF 
B-424	PermaShield™ Paper with permanent acrylic adhesive	R4310	White	Matte	122 (50)	General & Industrial ID, Panel ID	Good contrast and smear resistance	
B-425	Polypropylene with acrylic adhesive	R4310, R6210	White	Matte	248 (120) 5 mins.	General & Industrial ID	Excellent solvent resistance	UL   HF
B-426	Polyimide with permanent adhesive	R4310	Amber	Matte	662 (350) 80 sec.	Circuit Board & Component ID	Withstands extremely high temperatures	
B-427	Self-laminating vinyl with permanent acrylic adhesive	R4310, R6210	White and various colors	Matte	158 (70) 30 days	General & Industrial ID, Laboratory ID, Panel ID	Self-Laminating, Self-Extinguishing, Excellent water & oil resistance, Excellent abrasion and smudge resistance	UL 
B-428	PermaShield™ Polyester with permanent acrylic adhesive	R4310	Silver	Matte	176 (80) 30 days	Circuit Board & Component ID, Panel ID		UL   HF 
B-430	Polyester with permanent acrylic adhesive	R4410*, R6010	Clear	Gloss	212 (100) 30 days	General & Industrial ID	Translucent, High adhesion	UL  
B-432	Polyester with permanent acrylic adhesive	R4410*, R6010	Clear	Gloss	212 (100) 30 days	General & Industrial ID, Voice/Data ID, Panel ID	High adhesion	UL  
B-435	Polyester with permanent acrylic adhesive	R6010	Silver	Gloss	194 (90) 30 days	General & Industrial ID, Panel ID	Excellent solvent resistance	UL   
B-437	Tedlar® with permanent acrylic adhesive	R4310, R6210	White, Yellow	Matte	275 (135) 30 days	Circuit Board & Component ID, Panel ID	Self-Extinguishing	
B-439	Vinyl with permanent acrylic adhesive	R6010	White and various colors	Matte	104 (40) 30 days	General & Industrial ID, Laboratory ID, Panel ID, Voice/Data ID	Various colors available	
B-449	Polypropylene with removable acrylic adhesive	R4310, R6210	White	Matte	194 (90) 30 days	Laboratory ID	Ideal for temporary labeling applications	




continued on page 9


 These materials have static dissipative adhesives.	 These materials are AGA approved.
 These materials are UL approved.	 These materials are Halogen-Free (DIN VDE 0472/parts 815)
 These materials are CSA approved.	

Items in color red are acceptable ribbons for use with respective materials
*R4410 is available in blue, red, and white.

Materials and Ribbon Cross-Reference Chart

Brady Material Number	Material Description	Ribbon	Color	Finish	Max. Service Temp. F°, (C°)	Application	Special Properties	Agency Approval(s)/ Compliance
B-451	Vinyl with permanent acrylic adhesive	R4310	White/ Translucent	Matte	158 (70) 30 days	General & Industrial ID, Panel ID, Voice/Data ID, Wire & Cable Marking	Self-Laminating, Self-Extinguishing, Excellent water & oil resistance, Excellent abrasion and smudge resistance	UL
B-457	Polyimide with permanent acrylic adhesive	R6010	White	Gloss	662 (350) 80 sec.	Circuit Board & Component ID	Good contrast and smear resistance	UL
B-459	Polyester with permanent acrylic adhesive	R4410*, R6010	White	Matte	212 (100) 30 days	Circuit Board & Component ID		UL, CSA
B-461	Self-laminating polyester film with permanent acrylic adhesive	R4310	White/ Translucent, Yellow	Matte	212 (100) 30 days	Laboratory ID	Self-Laminating, Excellent abrasion and smudge resistance	HF
B-473	Polyester with permanent acrylic adhesive	R6010	White, Yellow	Gloss	248 (120) 30 days	Circuit Board & Component ID, Panel ID	Static dissipative adhesive & liner	UL, A
B-477	Polyimide with static dissipative permanent acrylic adhesive	R6010	White	Gloss	662 (350) 80 sec.	Circuit Board & Component ID	Static Dissipative Adhesive & Liner	UL, A
B-478	Polyimide with static dissipative permanent acrylic adhesive	R6010	White	Gloss	662 (350) 80 sec.	Circuit Board & Component ID	Static dissipative adhesive & liner, Low profile	UL, A
B-479	Polyimide with static dissipative permanent acrylic adhesive	R6010	White	Matte	662 (350) 80 sec.	Circuit Board & Component ID	Static dissipative adhesive & liner, Low profile (1 mil)	UL, A
B-483	Polyester with permanent rubber adhesive	R4410*, R6010	White	Gloss	248 (120) 30 days	Panel ID, Voice/Data ID	Ultra-aggressive adhesive, Designed for powder coated surfaces	UL, CSA
B-486	Polyester with permanent rubber adhesive	R4310, R6010	Silver	Matte	248 (120) 30 days	General & Industrial ID, Panel ID	Ultra-aggressive adhesive, Designed for powder coated surfaces	UL, CSA
B-488	Polyester with permanent acrylic adhesive	R4310, R6010	White	Matte	320 (160) 30 days	General & Industrial ID, Laboratory ID, Panel ID		UL, A, AGA
B-489	Polyester with permanent rubber adhesive	R4310, R6010	White	Matte	248 (120) 30 days	General & Industrial ID, Panel ID	Ultra-aggressive adhesive, Designed for powder coated surfaces	UL, CSA
B-490	FreezerBondz™ Polyester with permanent acrylic adhesive	R4310, R6210	White	Matte	266 (130) 30 days	Laboratory ID	Can be applied to frozen surfaces including glass and polypropylene stored in liquid nitrogen	UL
B-495	Polyethylene Napthalate with permanent adhesive	R6010	White	Gloss	464 (240) 5 min.	Circuit Board & Component ID	Good contrast and smear resistance	UL
B-498	Vinyl Cloth with repositionable rubber based adhesive	R6210, R4310, R6010	White	Semi-Gloss	175 (80) 30 days	Circuit Board & Component ID, Panel ID	Repositionable	UL
B-499	Nylon Cloth with permanent acrylic pressure sensitive adhesive	R4310, R6010, R6210	White, Yellow	Matte	174 (90) 30 days	General & Industrial ID, Panel ID	Low profile, High adhesion	UL, HF
B-642	Tedlar® with permanent acrylic adhesive	R4310, R6210	White	Matte	275 (135) 30 days	Panel ID, Voice/Data ID, Wire & Cable Marking	Self-Extinguishing, Self-Laminating	
B-7546	Tamper evident polyester	R6010	White	Gloss	175 (80) 30 days	Tamper Indicating	Leaves "void" footprint when removed	UL, CSA
B-7566	Tamper evident polyester	R4410*, R6010		Gloss	175 (80) 30 days	General & Industrial ID, Tamper Indicating	Leaves "void" footprint when removed	
B-7576	Tamper evident polyester	R6010, R4410*	Silver	Matte	212 (100) 30 days	Tamper Indicating	Leaves "void" footprint when removed	UL
B-8425	Polypropylene with permanent acrylic adhesive	R6010	White	Gloss	194 (90) 30 days	General & Industrial ID		UL, CSA

 These materials have static dissipative adhesives.
 These materials are UL approved.
 These materials are CSA approved.

 These materials are AGA approved.
HF These materials are Halogen-Free (DIN VDE 0472/parts 815)

Items in color red are acceptable ribbons for use with respective materials
 *R4410 is available in blue, red, and white.

Label Ordering Guide

Wire and Cable Labels

Page	Description
10	Pre-Cut General Labels
11-12	Self-Laminating Wire and Cable Labels
13	Continuous Tapes
13	Specialty Markers – PermaSleeve
14	Specialty Markers – DuraSleeve
14	Specialty Markers – BradySleeve
14	Specialty Markers – BradyTag
14	Specialty Markers – Terminal Block Markers

General Purpose Labels

15-16	General Pre-Cut Labels
16	PermaShield Labels
16	Pre-Printed Labels
17	Black Bordered Labels
17	Tamper Indicating Labels
17-18	Continuous Tapes

Circuit Board and Component Labels

18-20	Pre-Cut to Size Labels
20-21	Polyimide Labels
22	Tedlar Labels

Datacomm Labels

22-23	Communications Labeling
23	Patch Panel Labels
24	Patch Panel Continuous Tapes and Strips
24	Power and Ground Cable Labels
25	Workstation Labels
25	Fiber Optic Labels/Flags

Laboratory Labels

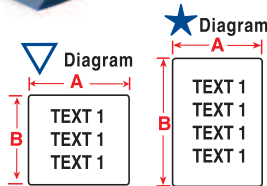
26	FreezerBondz™ Labels
26	General Self-Laminating Labels for Vials Tubes, Straws and More



Catalog numbers beginning with "B" indicate bulk roll.

Ribbon Chart

Part #	Description	Length
R4310	R4310 Black Ribbon	75ft (22.9m)
R6010	R6010 Black Ribbon	75ft (22.9m)
R6210	R6210 Black Ribbon	75ft (22.9m)
R4410-BL	R4410 Blue Ribbon	75ft (22.9m)
R4410-RD	R4410 Red Ribbon	75ft (22.9m)
R4410-WT	R4410 White Ribbon	75ft (22.9m)



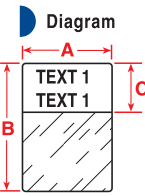
Wire and Cable Marking

Pre-Cut General Labels

Catalog Number	Diagram	Labels per Roll	Dimensions - inches		Dimensions - mm		Wire Gauge
			A	B	A	B	
Permanent Adhesive (B-499)							
PTL-28-499	★	750	0.250	1.500	6.35	38.10	10 to 4
PTL-29-499	★	500	0.500	1.500	12.70	38.10	10 to 4
PTL-30-499	★	250	0.750	1.500	19.05	38.10	10 to 4
PTL-31-499	★	250	1.000	1.500	25.40	38.10	10 to 4
PTL-16-499	★	500	0.375	1.000	9.53	25.40	12 to 10
PTL-18-499	★	250	0.750	1.000	19.05	25.40	12 to 10
PTL-19-499	▽	250	1.000	1.000	25.40	25.40	12 to 10
PTL-11-499	★	500	0.500	0.750	12.70	19.05	16 to 10
BPTL-11-499	★	5000	0.500	0.750	12.70	19.05	16 to 10
PTL-7-499	▽	500	0.500	0.500	12.70	12.70	22 to 16
PTL-21-499	★	100	1.000	2.500	25.40	63.50	Cables
PTL-23-499	★	100	1.000	4.000	25.40	101.60	Cables
Removable Adhesive (B-498)							
PTL-28-498	★	750	0.250	1.500	6.35	38.10	10 to 4
PTL-29-498	★	500	0.500	1.500	12.70	38.10	10 to 4
BPTL-29-498	★	5000	0.500	1.500	12.70	38.10	10 to 4
PTL-30-498	★	250	0.750	1.500	19.05	38.10	10 to 4
PTL-31-498	★	250	1.000	1.500	25.40	38.10	10 to 4
PTL-32-498	▽	250	1.500	1.500	38.10	38.10	10 to 4
PTL-16-498	★	500	0.375	1.000	9.53	25.40	12 to 10
PTL-18-498	★	250	0.750	1.000	19.05	25.40	12 to 10
BPTL-18-498	★	2500	0.750	1.000	19.05	25.40	12 to 10
PTL-19-498	▽	250	1.000	1.000	25.40	25.40	12 to 10
BPTL-19-498	▽	2500	1.000	1.000	25.40	25.40	12 to 10
PTL-17-498	▽	500	1.000	0.500	25.40	12.70	12 to 10
PTL-10-498	★	750	0.250	0.750	6.35	19.05	16 to 10
PTL-11-498	★	500	0.500	0.750	12.70	19.05	16 to 10
BPTL-11-498	★	5000	0.500	0.750	12.70	19.05	16 to 10
PTL-7-498	▽	500	0.500	0.500	12.70	12.70	22 to 16
PTL-15-498	▽	750	1.000	0.275	25.40	6.99	22 to 16
PTL-21-498	★	100	1.000	2.500	25.40	63.50	Cables
PTL-23-498	★	100	1.000	4.000	25.40	101.60	Cables
PTL-33-498	★	100	1.500	4.000	38.10	101.60	Cables
PTL-34-498	★	50	1.500	6.000	38.10	152.40	Cables



Wire and Cable Marking



Self-Laminating Wire and Cable Labels (B-427) Diagram =

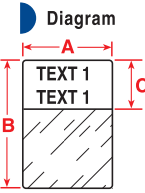
Catalog Number	Labels per Roll	Color	Dimensions - inches			Dimensions - mm			Wire Gauge
			A	B	C	A	B	C	
PTL-102-427	250	White	0.500	1.250	0.375	12.70	31.75	9.53	10 to 4
PTL-18-427	250	White	0.750	1.000	0.375	19.05	25.40	9.53	10 to 4
BPTL-18-427	2500	White	0.750	1.000	0.375	19.05	25.40	9.53	10 to 4
PTL-18-427-YL	250	Yellow	0.750	1.000	0.375	19.05	25.40	9.53	10 to 4
PTL-28-427	750	White	0.250	1.500	0.500	6.35	38.10	12.70	10 to 4
PTL-28-427-BL	750	Blue	0.250	1.500	0.500	6.35	38.10	12.70	10 to 4
PTL-28-427-BR	750	Brown	0.250	1.500	0.500	6.35	38.10	12.70	10 to 4
PTL-28-427-GR	750	Green	0.250	1.500	0.500	6.35	38.10	12.70	10 to 4
PTL-28-427-GY	750	Gray	0.250	1.500	0.500	6.35	38.10	12.70	10 to 4
PTL-28-427-OR	750	Orange	0.250	1.500	0.500	6.35	38.10	12.70	10 to 4
PTL-28-427-PL	750	Purple	0.250	1.500	0.500	6.35	38.10	12.70	10 to 4
PTL-28-427-RD	750	Red	0.250	1.500	0.500	6.35	38.10	12.70	10 to 4
PTL-28-427-YL	750	Yellow	0.250	1.500	0.500	6.35	38.10	12.70	10 to 4
PTL-29-427	500	White	0.500	1.500	0.500	12.70	38.10	12.70	10 to 4
BPTL-29-427	5000	White	0.500	1.500	0.500	12.70	38.10	12.70	10 to 4
PTL-29-427-BL	500	Blue	0.500	1.500	0.500	12.70	38.10	12.70	10 to 4
PTL-29-427-BR	500	Brown	0.500	1.500	0.500	12.70	38.10	12.70	10 to 4
PTL-29-427-GR	500	Green	0.500	1.500	0.500	12.70	38.10	12.70	10 to 4
PTL-29-427-GY	500	Gray	0.500	1.500	0.500	12.70	38.10	12.70	10 to 4
PTL-29-427-OR	500	Orange	0.500	1.500	0.500	12.70	38.10	12.70	10 to 4
PTL-29-427-PL	500	Purple	0.500	1.500	0.500	12.70	38.10	12.70	10 to 4
PTL-29-427-RD	500	Red	0.500	1.500	0.500	12.70	38.10	12.70	10 to 4
PTL-29-427-YL	500	Yellow	0.500	1.500	0.500	12.70	38.10	12.70	10 to 4
PTL-30-427	250	White	0.750	1.500	0.500	19.05	38.10	12.70	10 to 4
BPTL-30-427	2500	White	0.750	1.500	0.500	19.05	38.10	12.70	10 to 4
PTL-30-427-BL	250	Blue	0.750	1.500	0.500	19.05	38.10	12.70	10 to 4
PTL-30-427-BR	250	Brown	0.750	1.500	0.500	19.05	38.10	12.70	10 to 4
PTL-30-427-GR	250	Green	0.750	1.500	0.500	19.05	38.10	12.70	10 to 4
PTL-30-427-GY	250	Gray	0.750	1.500	0.500	19.05	38.10	12.70	10 to 4
PTL-30-427-OR	250	Orange	0.750	1.500	0.500	19.05	38.10	12.70	10 to 4
PTL-30-427-PL	250	Purple	0.750	1.500	0.500	19.05	38.10	12.70	10 to 4
PTL-30-427-RD	250	Red	0.750	1.500	0.500	19.05	38.10	12.70	10 to 4
PTL-30-427-YL	250	Yellow	0.750	1.500	0.500	19.05	38.10	12.70	10 to 4
PTL-103-427	250	White	1.000	1.250	0.500	25.40	31.75	12.70	10 to 4
PTL-31-427	250	White	1.000	1.500	0.500	25.40	38.10	12.70	10 to 4
BPTL-31-427	2500	White	1.000	1.500	0.500	25.40	38.10	12.70	10 to 4
PTL-31-427-BL	250	Blue	1.000	1.500	0.500	25.40	38.10	12.70	10 to 4
PTL-31-427-BR	250	Brown	1.000	1.500	0.500	25.40	38.10	12.70	10 to 4
PTL-31-427-GR	250	Green	1.000	1.500	0.500	25.40	38.10	12.70	10 to 4
PTL-31-427-GY	250	Gray	1.000	1.500	0.500	25.40	38.10	12.70	10 to 4
PTL-31-427-OR	250	Orange	1.000	1.500	0.500	25.40	38.10	12.70	10 to 4
PTL-31-427-PL	250	Purple	1.000	1.500	0.500	25.40	38.10	12.70	10 to 4
PTL-31-427-RD	250	Red	1.000	1.500	0.500	25.40	38.10	12.70	10 to 4
PTL-31-427-YL	250	Yellow	1.000	1.500	0.500	25.40	38.10	12.70	10 to 4
PTL-31-642	250	White	1.000	1.500	0.500	25.40	38.10	12.70	10 to 4
PTL-32-427	250	White	1.500	1.500	0.500	38.10	38.10	12.70	10 to 4
BPTL-32-427	1000	White	1.500	1.500	0.500	38.10	38.10	12.70	10 to 4
PTL-32-427-BL	250	Blue	1.500	1.500	0.500	38.10	38.10	12.70	10 to 4
PTL-32-427-BR	250	Brown	1.500	1.500	0.500	38.10	38.10	12.70	10 to 4
PTL-32-427-GR	250	Green	1.500	1.500	0.500	38.10	38.10	12.70	10 to 4
PTL-32-427-GY	250	Gray	1.500	1.500	0.500	38.10	38.10	12.70	10 to 4
PTL-32-427-OR	250	Orange	1.500	1.500	0.500	38.10	38.10	12.70	10 to 4
PTL-32-427-PL	250	Purple	1.500	1.500	0.500	38.10	38.10	12.70	10 to 4
PTL-32-427-RD	250	Red	1.500	1.500	0.500	38.10	38.10	12.70	10 to 4
PTL-32-427-YL	250	Yellow	1.500	1.500	0.500	38.10	38.10	12.70	10 to 4
PTL-88-427	250	White	1.750	1.500	0.500	44.45	38.10	12.70	10 to 4
PTL-107-427	100	White	2.000	1.500	0.500	50.80	38.10	12.70	10 to 4
BPTL-107-427	1000	White	2.000	1.500	0.500	50.80	38.10	12.70	10 to 4
PTL-17-427	500	White	0.500	1.000	0.375	12.70	25.40	9.53	12 to 10
BPTL-17-427	5000	White	0.500	1.000	0.375	12.70	25.40	9.53	12 to 10
PTL-17-427-YL	500	Yellow	0.500	1.000	0.375	12.70	25.40	9.53	12 to 10
PTL-19-427	250	White	1.000	1.000	0.375	25.40	25.40	9.53	12 to 10
BPTL-19-427	2500	White	1.000	1.000	0.375	25.40	25.40	9.53	12 to 10



continued on page 12

Brady also offers custom label solutions to meet your needs, designed to your exact specification. Call 1-888-272-3946.

Wire and Cable Marking

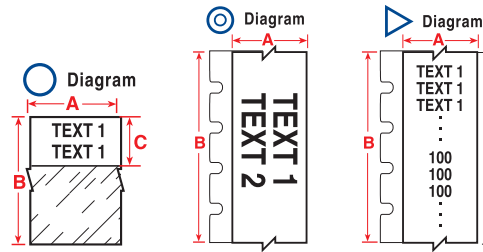


Self-Laminating Wire and Cable Labels (B-427) Diagram = continued from page 11

Catalog Number	Labels per Roll	Color	Dimensions - inches			Dimensions - mm			Wire Gauge
			A	B	C	A	B	C	
PTL-19-427-BL	250	Blue	1.000	1.000	0.375	25.40	25.40	9.53	12 to 10
PTL-19-427-BR	250	Brown	1.000	1.000	0.375	25.40	25.40	9.53	12 to 10
PTL-19-427-GR	250	Green	1.000	1.000	0.375	25.40	25.40	9.53	12 to 10
PTL-19-427-GY	250	Gray	1.000	1.000	0.375	25.40	25.40	9.53	12 to 10
PTL-19-427-OR	250	Orange	1.000	1.000	0.375	25.40	25.40	9.53	12 to 10
PTL-19-427-PL	250	Purple	1.000	1.000	0.375	25.40	25.40	9.53	12 to 10
PTL-19-427-RD	250	Red	1.000	1.000	0.375	25.40	25.40	9.53	12 to 10
PTL-19-427-YL	250	Yellow	1.000	1.000	0.375	25.40	25.40	9.53	12 to 10
PTL-19-642	250	White	1.000	1.000	0.375	25.40	25.40	9.53	12 to 10
PTL-104-427	250	White	1.500	1.000	0.375	38.10	25.40	9.53	12 to 10
PTL-87-427	250	White	1.750	1.000	0.375	44.45	25.40	9.53	12 to 10
PTL-10-427	750	White	0.250	0.750	0.375	6.35	19.05	9.53	16 to 10
PTL-10-427-YL	750	Yellow	0.250	0.750	0.375	6.35	19.05	9.53	16 to 10
PTL-11-427	500	White	0.500	0.750	0.375	12.70	19.05	9.53	16 to 10
BPTL-11-427	5000	White	0.500	0.750	0.375	12.70	19.05	9.53	16 to 10
PTL-11-427-YL	500	Yellow	0.500	0.750	0.375	12.70	19.05	9.53	16 to 10
PTL-96-427	250	White	1.000	0.750	0.375	25.40	19.05	9.53	16 to 10
PTL-21-427	100	White	1.000	2.500	0.750	25.40	63.50	19.05	Cables
BPTL-21-427	1000	White	1.000	2.500	0.750	25.40	63.50	19.05	Cables
PTL-21-427-BL	100	Blue	1.000	2.500	0.750	25.40	63.50	19.05	Cables
PTL-21-427-BR	100	Brown	1.000	2.500	0.750	25.40	63.50	19.05	Cables
PTL-21-427-GR	100	Green	1.000	2.500	0.750	25.40	63.50	19.05	Cables
PTL-21-427-GY	100	Gray	1.000	2.500	0.750	25.40	63.50	19.05	Cables
PTL-21-427-OR	100	Orange	1.000	2.500	0.750	25.40	63.50	19.05	Cables
PTL-21-427-PL	100	Purple	1.000	2.500	0.750	25.40	63.50	19.05	Cables
PTL-21-427-RD	100	Red	1.000	2.500	0.750	25.40	63.50	19.05	Cables
PTL-21-427-YL	100	Yellow	1.000	2.500	0.750	25.40	63.50	19.05	Cables
PTL-21-642	100	White	1.000	2.500	0.750	25.40	63.50	19.05	Cables
PTL-157-427	100	White	1.500	2.500	0.750	38.10	63.50	19.05	Cables
PTL-23-427	100	White	1.000	4.000	1.000	25.40	101.60	25.40	Cables
BPTL-23-427	1000	White	1.000	4.000	1.000	25.40	101.60	25.40	Cables
PTL-23-427-BL	100	Blue	1.000	4.000	1.000	25.40	101.60	25.40	Cables
PTL-23-427-BR	100	Brown	1.000	4.000	1.000	25.40	101.60	25.40	Cables
PTL-23-427-GR	100	Green	1.000	4.000	1.000	25.40	101.60	25.40	Cables
PTL-23-427-GY	100	Gray	1.000	4.000	1.000	25.40	101.60	25.40	Cables
PTL-23-427-OR	100	Orange	1.000	4.000	1.000	25.40	101.60	25.40	Cables
PTL-23-427-PL	100	Purple	1.000	4.000	1.000	25.40	101.60	25.40	Cables
PTL-23-427-RD	100	Red	1.000	4.000	1.000	25.40	101.60	25.40	Cables
PTL-23-427-YL	100	Yellow	1.000	4.000	1.000	25.40	101.60	25.40	Cables
PTL-33-427	100	White	1.500	4.000	1.000	38.10	101.60	25.40	Cables
BPTL-33-427	500	White	1.500	4.000	1.000	38.10	101.60	25.40	Cables
PTL-33-427-BL	100	Blue	1.500	4.000	1.000	38.10	101.60	25.40	Cables
PTL-33-427-BR	100	Brown	1.500	4.000	1.000	38.10	101.60	25.40	Cables
PTL-33-427-GR	100	Green	1.500	4.000	1.000	38.10	101.60	25.40	Cables
PTL-33-427-GY	100	Gray	1.500	4.000	1.000	38.10	101.60	25.40	Cables
PTL-33-427-OR	100	Orange	1.500	4.000	1.000	38.10	101.60	25.40	Cables
PTL-33-427-PL	100	Purple	1.500	4.000	1.000	38.10	101.60	25.40	Cables
PTL-33-427-RD	100	Red	1.500	4.000	1.000	38.10	101.60	25.40	Cables
PTL-33-427-YL	100	Yellow	1.500	4.000	1.000	38.10	101.60	25.40	Cables
PTL-66-427	100	White	1.938	3.150	1.000	49.23	80.00	25.40	Cables
PTL-77-461	100	White	1.500	3.500	1.250	38.10	88.90	31.75	Cables
PTL-109-427	100	White	1.500	4.000	1.500	38.10	101.60	38.10	Cables
BPTL-109-427	500	White	1.500	4.000	1.500	38.10	101.60	38.10	Cables
PTL-34-427	50	White	1.500	6.000	1.500	38.10	152.40	38.10	Cables
BPTL-34-427	500	White	1.500	6.000	1.500	38.10	152.40	38.10	Cables
PTL-34-427-BL	50	Blue	1.500	6.000	1.500	38.10	152.40	38.10	Cables
PTL-34-427-BR	50	Brown	1.500	6.000	1.500	38.10	152.40	38.10	Cables
PTL-34-427-GR	50	Green	1.500	6.000	1.500	38.10	152.40	38.10	Cables
PTL-34-427-GY	50	Gray	1.500	6.000	1.500	38.10	152.40	38.10	Cables
PTL-34-427-OR	50	Orange	1.500	6.000	1.500	38.10	152.40	38.10	Cables
PTL-34-427-PL	50	Purple	1.500	6.000	1.500	38.10	152.40	38.10	Cables
PTL-34-427-RD	50	Red	1.500	6.000	1.500	38.10	152.40	38.10	Cables
PTL-34-427-YL	50	Yellow	1.500	6.000	1.500	38.10	152.40	38.10	Cables



Wire and Cable Marking

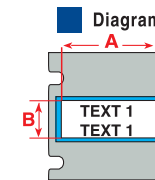


Continuous Tapes (B-437)

Catalog Number	Diagram	Material	Color	Dimensions - inches		Write-On Width - inches C	Dimensions - mm		Write-On Width - mm C
				A	B		A	B	
PTLCM-41-437W	▶	B-437	White	1.500	50 ft.	N/A	38.10	15.24 m	N/A
PTLCM-41-437Y	▶	B-437	Yellow	1.500	50 ft.	N/A	38.10	15.24 m	N/A
PTL-8-498	⊙	B-437	White	0.500	30 ft.	N/A	12.70	9.14 m	N/A
PTL-106-427	⊙	B-437	White/Translucent	50 ft.	1.500	0.500	15.24 m	38.10	12.70



Specialty Markers: PermaSleeve™ Heat-Shrink Sleeve Markers (B-342) Diagram = ■



Catalog Number	Sleeves per Roll	Dimensions - inches		Dimensions - mm		Approx. Wire Gauge
		A	B	A	B	
1.015" Marker Width, White 3:1 Shrink Ratio						
PSPT-094-1WT	100	1.015	0.182	25.78	4.62	28-18
BPSPT-094-1WT	2500	1.015	0.182	25.78	4.62	28-18
PSPT-125-1WT	100	1.015	0.235	25.78	5.96	22-16
BPSPT-125-1WT	1000	1.015	0.235	25.78	5.96	22-16
PSPT-187-1WT	100	1.015	0.335	25.78	8.50	18-12
BPSPT-187-1WT	1000	1.015	0.335	25.78	8.50	18-12
PSPT-250-1WT	100	1.015	0.439	25.78	11.15	16-10
BPSPT-250-1WT	1000	1.015	0.439	25.78	11.15	16-10
PSPT-375-1WT	100	1.015	0.645	25.78	16.38	12-6
BPSPT-375-1WT	1000	1.015	0.645	25.78	16.38	12-6
PSPT-500-1WT	100	1.015	0.851	25.78	21.61	8-1
BPSPT-500-1WT	1000	1.015	0.851	25.78	21.61	8-1
PSPT-1000-1WT	50	1.015	1.660	25.78	42.16	1-500
Yellow 3:1 Shrink Ratio						
PSPT-094-1YL	100	1.015	0.182	25.78	4.62	28-18
PSPT-125-1YL	100	1.015	0.235	25.78	5.96	22-16
PSPT-187-1YL	100	1.015	0.335	25.78	8.50	18-12
PSPT-250-1YL	100	1.015	0.439	25.78	11.15	16-10
PSPT-375-1YL	100	1.015	0.645	25.78	16.38	12-6
PSPT-500-1YL	100	1.015	0.851	25.78	21.61	8-1
PSPT-1000-1YL	50	1.015	1.660	25.78	42.16	1-500
1.765" Marker Width, White 3:1 Shrink Ratio						
PSPT-094-175WT	100	1.765	0.182	44.83	4.62	28-18
BPSPT-094-175WT	2500	1.765	0.182	44.83	4.62	28-18
PSPT-125-175WT	100	1.765	0.235	44.83	5.96	22-16
BPSPT-125-175WT	1000	1.765	0.235	44.83	5.96	22-16
PSPT-187-175WT	100	1.765	0.335	44.83	8.50	18-12
BPSPT-187-175WT	1000	1.765	0.335	44.83	8.50	18-12
PSPT-250-175WT	100	1.765	0.439	44.83	11.15	16-10
BPSPT-250-175WT	1000	1.765	0.439	44.83	11.15	16-10
PSPT-375-175WT	100	1.765	0.645	44.83	16.38	12-6
BPSPT-375-175WT	1000	1.765	0.645	44.83	16.38	12-6
PSPT-500-175WT	100	1.765	0.851	44.83	21.61	8-1
BPSPT-500-175WT	1000	1.765	0.851	44.83	21.61	8-1
PSPT-1000-175WT	50	1.765	1.660	44.83	42.16	1-500
BPSPT-1000-175WT	500	1.765	1.660	44.83	42.16	1-500
Yellow 3:1 Shrink Ratio						
PSPT-094-175YL	100	1.765	0.182	44.83	4.62	28-18
PSPT-125-175YL	100	1.765	0.235	44.83	5.96	22-16
PSPT-187-175YL	100	1.765	0.335	44.83	8.50	18-12
PSPT-250-175YL	100	1.765	0.439	44.83	11.15	16-10
PSPT-375-175YL	100	1.765	0.645	44.83	16.38	12-6
PSPT-500-175YL	100	1.765	0.851	44.83	21.61	8-1
PSPT-1000-175YL	50	1.765	1.660	44.83	42.16	1-500

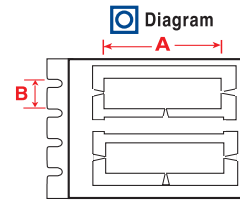


Wire and Cable Marking

Specialty Markers:

DuraSleeve® Wire Marker Inserts (B-390) Diagram =

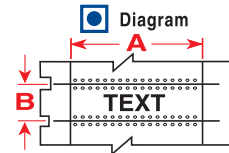
Catalog Number	Sleeves per Roll	Dimensions - inches		Dimensions - mm	
		A	B	A	B
PTDS-15-390	300	0.590	0.163	15.00	4.14
BPTDS-15-390	3000	0.590	0.163	15.00	4.14
PTDS-30-390	300	1.181	0.163	30.00	4.14
BPTDS-30-390	3000	1.181	0.163	30.00	4.14



Specialty Markers:




BradySleeve™ Heat-Shrink Sleeve Markers (B-321) Diagram =

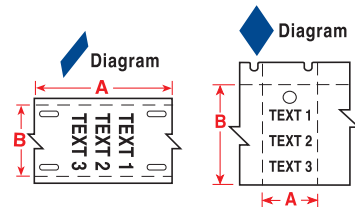
Catalog Number	Sleeves per Roll	Sleeve Dimensions - inches		Sleeve Dimensions - mm		Wire Gauge
		A	B	A	B	
0.450" Sleeve Width						
PTS-0.45-350-321	500	0.450	0.350	11.43	8.89	16-10
PTS-0.45-500-321	500	0.450	0.500	11.43	12.70	10-8
0.950" Sleeve Width						
PTS-0.95-350-321	500	0.950	0.350	24.13	8.89	16-10
PTS-0.95-500-321	500	0.950	0.500	24.13	12.70	10-8
PTS-0.95-750-321	250	0.950	0.750	24.13	19.05	4-2
PTS-0.95-1000-321	250	0.950	1.000	24.13	25.40	1-00
1.900" Sleeve Width						
PTS-1.90-350-321	500	1.900	0.350	48.26	8.89	16-10
PTS-1.90-500-321	500	1.900	0.500	48.26	12.70	10-8
PTS-1.90-750-321	250	1.900	0.750	48.26	19.05	4-2
PTS-1.90-1000-321	250	1.900	1.000	48.26	25.40	1-00



Specialty Markers:

BradyTag® Tear Resistant Markers (B-109) Diagram =

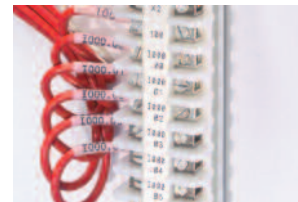
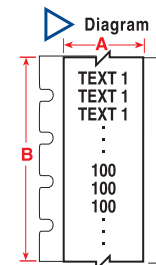
Catalog Number	Diagram	Tags per Roll	Dimensions - inches		Dimensions - mm	
			A	B	A	B
PTL-12-109		100	3.000	0.750	76.20	19.05
BPTL-12-109		1000	3.000	0.750	76.20	19.05
PTL-36-109		250	1.125	1.750	28.57	44.45



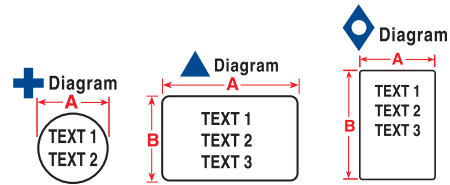
Specialty Markers:

Terminal Block Repositionable Markers (B-498) Diagram =

Catalog Number	Roll Dimensions - inches		Roll Dimensions - mm	
	A	B	A	B
PTLTB-498-240	0.240	30 ft.	6.09	9.10 m
BPTLTB-498-240	0.240	275 ft.	6.09	83.82 m
PTLTB-498-318	0.318	30 ft.	8.07	9.10 m
BPTLTB-498-318	0.318	275 ft.	8.07	83.82 m
PTLTB-498-375	0.375	30 ft.	9.52	9.10 m
BPTLTB-498-375	0.375	275 ft.	9.52	83.82 m



General Purpose Labels



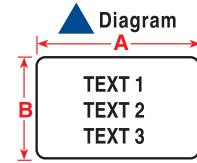
General Pre-Cut Labels

Catalog Number	Diagram	Labels per Roll	Material	Color	Dimensions - inches		Dimensions - mm	
					A	B	A	B
PTL-82-499	+	500	B-499	White	0.000	0.375 Diameter	0.00	9.53 Diameter
PTL-82-499YL	+	500	B-499	Yellow	0.000	0.375 Diameter	0.00	9.53 Diameter
PTL-83-499	+	500	B-499	White	0.000	0.500 Diameter	0.00	12.70 Diameter
PTL-83-499YL	+	500	B-499	Yellow	0.000	0.500 Diameter	0.00	12.70 Diameter
PTL-7-432	▲	500	B-432	Clear	0.500	0.500	12.70	12.70
PTL-10-425	▲	750	B-425	White	0.750	0.250	19.05	6.35
PTL-10-432	▲	750	B-432	Clear	0.750	0.250	19.05	6.35
PTL-10-8425	▲	750	B-425	White	0.750	0.250	19.05	6.35
PTL-11-432	▲	500	B-432	Clear	0.750	0.500	19.05	12.70
PTL-80-424	◇	250	B-424	White	0.750	0.900	19.05	22.86
PTL-84-499	▲	500	B-499	White	0.900	0.500	22.86	12.70
PTL-16-435	▲	500	B-435	Silver	1.000	0.375	25.40	9.53
PTL-16-483	▲	500	B-483	White	1.000	0.375	25.40	9.53
PTL-16-486	▲	500	B-486	Silver	1.000	0.375	25.40	9.53
PTL-16-489	▲	500	B-489	White	1.000	0.375	25.40	9.53
PTL-17-432	▲	500	B-432	Clear	1.000	0.500	25.40	12.70
PTL-17-435	▲	500	B-435	Silver	1.000	0.500	25.40	12.70
PTL-17-449	▲	500	B-449	White	1.000	0.500	25.40	12.70
PTL-17-483	▲	500	B-483	White	1.000	0.500	25.40	12.70
PTL-17-486	▲	500	B-486	White	1.000	0.500	25.40	12.70
PTL-17-489	▲	500	B-489	White	1.000	0.500	25.40	12.70
PTL-19-435	▲	250	B-435	Silver	1.000	1.000	25.40	25.40
PTL-19-483	▲	250	B-483	White	1.000	1.000	25.40	25.40
PTL-19-486	▲	250	B-486	Silver	1.000	1.000	25.40	25.40
PTL-19-489	▲	250	B-489	White	1.000	1.000	25.40	25.40
PTL-105-427-AW	▲	750	B-427	White	1.100	0.250	27.94	6.35
PTL-112-490	▲	500	B-490	White	1.250	0.375	31.75	9.53
PTL-65-483	▲	250	B-483	White	1.375	1.000	34.93	25.40
PTL-29-435	▲	500	B-435	Silver	1.500	0.500	38.10	12.70
PTL-29-483	▲	500	B-483	White	1.500	0.500	38.10	12.70
PTL-29-486	▲	500	B-486	Silver	1.500	0.500	38.10	12.70
PTL-29-489	▲	500	B-489	White	1.500	0.500	38.10	12.70
PTL-30-427-AW	▲	250	B-427	White	1.500	0.750	38.10	19.05
PTL-30-435	▲	250	B-435	Silver	1.500	0.750	38.10	19.05
PTL-30-483	▲	250	B-483	White	1.500	0.750	38.10	19.05
PTL-30-486	▲	250	B-486	Silver	1.500	0.750	38.10	19.05
PTL-30-489	▲	250	B-489	White	1.500	0.750	38.10	19.05
PTL-31-435	▲	250	B-435	Silver	1.500	1.000	38.10	25.40
PTL-31-483	▲	250	B-483	White	1.500	1.000	38.10	25.40
PTL-31-486	▲	250	B-486	Silver	1.500	1.000	38.10	25.40
PTL-31-489	▲	250	B-489	White	1.500	1.000	38.10	25.40
PTL-32-435	▲	250	B-435	Silver	1.500	1.500	38.10	38.10
PTL-32-483	▲	250	B-483	White	1.500	1.500	38.10	38.10
PTL-32-486	▲	250	B-486	Silver	1.500	1.500	38.10	38.10
PTL-32-489	▲	250	B-489	White	1.500	1.500	38.10	38.10
PTL-113-490	◇	100	B-490	White	1.500	2.200	38.10	55.88
PTL-114-490	◇	100	B-490	White	1.500	3.875	38.10	98.43
PTL-76-490	▲	250	B-490	White	1.625	0.600	41.28	15.24
PTL-81-499	▲	750	B-499	Yellow	1.900	0.250	48.26	6.35
PTL-78-427-AW	▲	250	B-427	White	1.900	1.000	48.26	25.40
PTL-78-490	▲	250	B-490	White	1.900	1.000	48.26	25.40
PTL-61-483	▲	100	B-483	White	2.000	0.500	50.80	12.70
PTL-78-499	▲	250	B-499	White	1.900	1.000	48.26	25.40
PTL-20-424	▲	100	B-424	White	2.000	1.000	50.80	25.40
BPTL-20-424	▲	1000	B-424	White	2.000	1.000	50.80	25.40



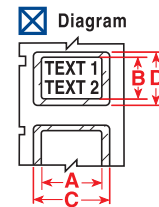
continued on page16

General Purpose Labels



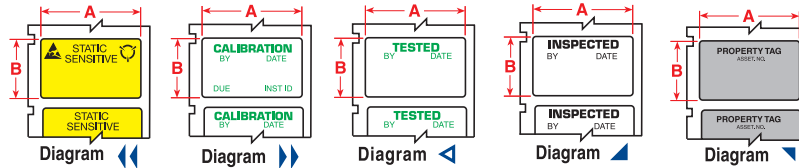
General Pre-Cut Labels *continued from page 15*

Catalog Number	Diagram	Labels per Roll	Material	Color	Dimensions - inches		Dimensions - mm	
					A	B	A	B
PTL-20-435	▲	100	B-435	Silver	2.000	1.000	50.80	25.40
PTL-20-483	▲	100	B-483	White	2.000	1.000	50.80	25.40
PTL-20-486	▲	100	B-486	Silver	2.000	1.000	50.80	25.40
PTL-20-489	▲	100	B-489	White	2.000	1.000	50.80	25.40
PTL-22-424	▲	100	B-424	White	3.000	1.000	76.20	25.40
PTL-37-424	▲	100	B-424	White	3.000	1.900	76.20	48.26
PTL-37-435	▲	100	B-435	Silver	3.000	1.900	76.20	48.26
PTL-37-483	▲	100	B-483	White	3.000	1.900	76.20	48.26
PTL-37-486	▲	100	B-486	Silver	3.000	1.900	76.20	48.26
PTL-37-489	▲	100	B-489	White	3.000	1.900	76.20	48.26
PTL-62-483	▲	50	B-483	White	4.000	0.750	101.60	19.05
PTL-23-483	▲	100	B-483	White	4.000	1.000	101.60	25.40
PTL-38-424	▲	100	B-424	White	4.000	1.900	101.60	48.26
PTL-38-435	▲	100	B-435	Silver	4.000	1.900	101.60	48.26
PTL-38-483	▲	100	B-486	White	4.000	1.900	101.60	48.26
PTL-38-486	▲	100	B-486	Silver	4.000	1.900	101.60	48.26
PTL-38-489	▲	100	B-489	White	4.000	1.900	101.60	48.26
PTL-63-483	▲	50	B-483	White	8.000	0.750	203.20	19.05



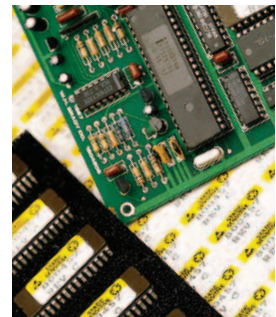
PermaShield™ Labels with Overlaminates Diagram = ☒

Catalog Number	Material	Labels per Roll	Color	Dimensions - inches				Dimensions - mm			
				Label		Overlaminates		Label		Overlaminates	
A	B	C	D	A	B	C	D	A	B	C	D
PTPSL-17-428	B-428	500	Silver	1.000	0.500	1.250	0.750	25.40	12.70	31.75	19.05
PTPSL-17-424	B-424	500	White	1.000	0.500	1.250	0.750	25.40	12.70	31.75	19.05
PTPSL-17-422	B-422	500	White	1.000	0.500	1.250	0.750	25.40	12.70	31.75	19.05
PTPSL-20-428	B-428	100	Silver	2.000	1.000	2.250	1.250	50.80	25.40	57.15	31.75
PTPSL-20-424	B-424	100	White	2.000	1.000	2.250	1.250	50.80	25.40	57.15	31.75
PTPSL-20-422	B-422	100	White	2.000	1.000	2.250	1.250	50.80	25.40	57.15	31.75
PTPSL-26-428	B-428	100	Silver	2.750	1.250	3.000	1.500	69.85	31.75	76.20	38.10
PTPSL-26-422	B-422	100	White	2.750	1.250	3.000	1.500	69.85	31.75	76.20	38.10
PTPSL-50-428	B-428	100	Silver	3.000	1.650	3.250	1.900	76.20	41.91	82.55	48.26
PTPSL-50-422	B-422	100	White	3.000	1.650	3.250	1.900	76.20	41.91	82.55	48.26

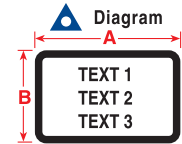


Pre-Printed Labels

Catalog Number	Diagram	Material	Labels per Roll	Dimensions - inches		Dimensions - mm		Pre-Printed Legend Description
				A	B	A	B	
PTLSL-17-473	◀◀	B-473	500	1.000	0.500	25.40	12.70	STATIC SENSITIVE
PTL-30-423-CALI	▶▶	B-423	250	1.500	0.750	38.10	19.05	CALIBRATION
PTL-30-428-CALI	▶▶	B-428	250	1.500	0.750	38.10	19.05	CALIBRATION
PTL-30-423-TEST	◀◀	B-423	250	1.500	0.750	38.10	19.05	TESTED
PTL-30-428-TEST	◀◀	B-428	250	1.500	0.750	38.10	19.05	TESTED
PTL-30-423-INSP	▶▶	B-423	250	1.500	0.750	38.10	19.05	INSPECTED BY
PTL-30-428-INSP	▶▶	B-428	250	1.500	0.750	38.10	19.05	INSPECTED BY
PTL-35-422-PROP	▶▶	B-422	250	1.630	0.750	41.40	19.05	PROPERTY TAG
PTL-35-423-PROP	▶▶	B-423	250	1.630	0.750	41.40	19.05	PROPERTY TAG
PTL-35-428-PROP	▶▶	B-428	250	1.630	0.750	41.40	19.05	PROPERTY TAG
PTL-35-435-PROP	▶▶	B-435	250	1.630	0.750	41.40	19.05	PROPERTY TAG

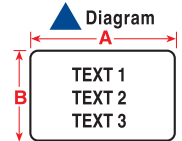


General Purpose Labels



Black Bordered Labels Diagram = ▲

Catalog Number	Material	Labels per Roll	Color	Dimensions - inches		Dimensions - mm	
				A	B	A	B
PTL-24-423-BK	B-423	500	White	1.130	0.500	28.70	12.70
PTL-24-428-BK	B-428	500	Silver	1.130	0.500	28.70	12.70
PTL-24-483-BK	B-483	500	White	1.130	0.500	28.70	12.70
PTL-24-486-BK	B-486	500	Silver	1.130	0.500	28.70	12.70



Tamper Indication Labels Diagram = ▲

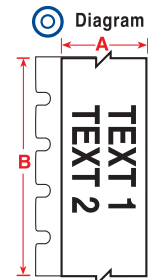
Catalog Number	Material	Labels per Roll	Color	Dimensions - inches		Dimensions - mm	
				A	B	A	B
PTL-17-7576	B-7576	500	Silver	1.000	0.500	25.40	12.70
PTL-17-7546	B-7546	500	White	1.000	0.500	25.40	12.70
PTL-17-352	B-352	500	Silver	1.000	0.500	25.40	12.70
PTL-17-351	B-351	500	White	1.000	0.500	25.40	12.70
PTL-31-7576	B-7576	250	Silver	1.500	1.000	38.10	25.40
PTL-31-7546	B-7546	250	White	1.500	1.000	38.10	25.40
PTL-31-352	B-352	250	Silver	1.500	1.000	38.10	25.40
PTL-31-351	B-351	250	White	1.500	1.000	38.10	25.40
PTL-20-7576	B-7576	100	Silver	2.000	1.000	50.80	25.40
PTL-20-7546	B-7546	100	White	2.000	1.000	50.80	25.40
PTL-20-352	B-352	100	Silver	2.000	1.000	50.80	25.40
PTL-20-351	B-351	100	White	2.000	1.000	50.80	25.40
PTL-37-7576	B-7576	100	Silver	3.000	1.900	76.20	48.26
PTL-37-7546	B-7546	100	White	3.000	1.900	76.20	48.26
PTL-37-352	B-352	100	Silver	3.000	1.900	76.20	48.26
PTL-37-351	B-351	100	White	3.000	1.900	76.20	48.26



Shown: B-351 and B-352



Shown: B-7546 and B-7576



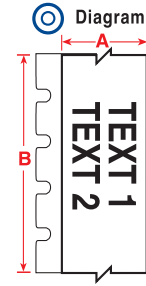
Continuous Tape Diagram = ⊙

Catalog Number	Material	Color	Dimensions - inches		Dimensions - mm	
			A	B	A	B
PTL-101-432	B-432	Clear	0.250	50 ft.	6.35	15.24 m
PTL-101-483	B-483	White	0.250	50 ft.	6.35	15.24 m
PTL-101-489	B-489	White	0.250	50 ft.	6.35	15.24 m
PTL-46-422	B-422	White	0.375	50 ft.	9.53	15.24 m
PTL-46-430	B-430	Clear	0.375	50 ft.	9.53	15.24 m
PTL-8-422	B-422	White	0.500	50 ft.	12.70	15.24 m
PTL-8-423	B-423	White	0.500	50 ft.	12.70	15.24 m
PTL-8-428	B-428	Silver	0.500	50 ft.	12.70	15.24 m
PTL-8-430	B-430	Clear	0.500	50 ft.	12.70	15.24 m
PTL-8-432	B-432	Clear	0.500	50 ft.	12.70	15.24 m
PTL-8-439	B-439	White	0.500	50 ft.	12.70	15.24 m
PTL-8-439-BK	B-439	Black	0.500	50 ft.	12.70	15.24 m
PTL-8-439-BL	B-439	Blue	0.500	50 ft.	12.70	15.24 m
PTL-8-439-GR	B-439	Green	0.500	50 ft.	12.70	15.24 m
PTL-8-439-OR	B-439	Orange	0.500	50 ft.	12.70	15.24 m
PTL-8-439-RD	B-439	Red	0.500	50 ft.	12.70	15.24 m
PTL-8-439-YL	B-439	Yellow	0.500	50 ft.	12.70	15.24 m



continued on page 18

General Purpose Labels

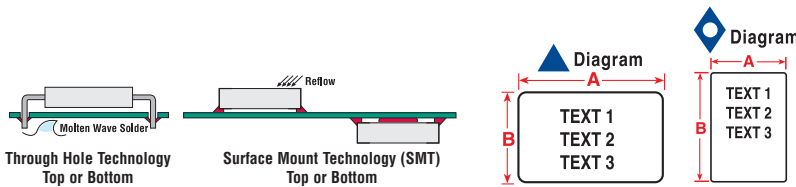


Continuous Tape Diagram = continued from page 17

Catalog Number	Material	Color	Dimensions - inches		Dimensions - mm	
			A	B	A	B
PTL-8-483	B-483	White	0.500	50 ft.	12.70	15.24 m
PTL-8-489	B-489	White	0.500	50 ft.	12.70	15.24 m
PTL-42-422	B-422	White	1.000	50 ft.	25.40	15.24 m
PTL-42-430	B-430	Clear	1.000	50 ft.	25.40	15.24 m
PTL-42-432	B-432	Clear	1.000	50 ft.	25.40	15.24 m
PTL-42-439	B-439	White	1.000	50 ft.	25.40	15.24 m
PTL-42-439-BK	B-439	Black	1.000	50 ft.	25.40	15.24 m
PTL-42-439-BL	B-439	Blue	1.000	50 ft.	25.40	15.24 m
PTL-42-439-GR	B-439	Green	1.000	50 ft.	25.40	15.24 m
PTL-42-439-OR	B-439	Orange	1.000	50 ft.	25.40	15.24 m
PTL-42-439-RD	B-439	Red	1.000	50 ft.	25.40	15.24 m
PTL-42-439-YL	B-439	Yellow	1.000	50 ft.	25.40	15.24 m
PTL-42-483	B-483	White	1.000	50 ft.	25.40	15.24 m
PTL-42-489	B-489	White	1.000	50 ft.	25.40	15.24 m
PTL-100-432	B-432	Clear	1.300	50 ft.	33.02	15.24 m
PTL-100-483	B-483	White	1.300	50 ft.	33.02	15.24 m
PTL-100-489	B-489	White	1.300	50 ft.	33.02	15.24 m
PTL-43-422	B-422	White	1.900	50 ft.	48.26	15.24 m
PTL-43-430	B-430	Clear	1.900	50 ft.	48.26	15.24 m
PTL-43-432	B-432	Clear	1.900	50 ft.	48.26	15.24 m
PTL-43-439	B-439	White	1.900	50 ft.	48.26	15.24 m
PTL-43-439-BK	B-439	Black	1.900	50 ft.	48.26	15.24 m
PTL-43-439-BL	B-439	Blue	1.900	50 ft.	48.26	15.24 m
PTL-43-439-GR	B-439	Green	1.900	50 ft.	48.26	15.24 m
PTL-43-439-OR	B-439	Orange	1.900	50 ft.	48.26	15.24 m
PTL-43-439-RD	B-439	Red	1.900	50 ft.	48.26	15.24 m
PTL-43-439-YL	B-439	Yellow	1.900	50 ft.	48.26	15.24 m
PTL-43-483	B-483	White	1.900	50 ft.	48.26	15.24 m
PTL-43-489	B-489	White	1.900	50 ft.	48.26	15.24 m



Circuit Board and Component Labels



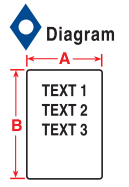
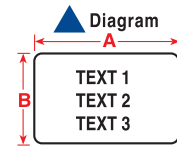
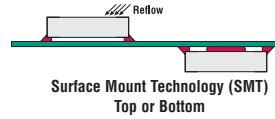
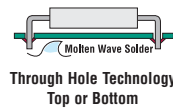
Pre-Cut Labels

Catalog Number	Diagram	Material	Labels per Roll	Color	Dimensions - inches		Dimensions - mm		Surface Mount Technology (SMT)	Through Hole Technology - Top	Through Hole Technology - Bottom	After Process
					A	B	A	B				
PTL-68-430	▲	B-430	750	Clear	0.240	0.150	6.00	3.81	X	▲	X	●
PTL-70-430	▲	B-430	750	Clear	0.240	0.200	6.00	5.08	X	▲	X	●
PTL-1-473	▲	B-473	750	White	0.250	0.250	6.35	6.35	X	▲	X	●
PTL-1-423	▲	B-423	750	White	0.250	0.250	6.35	6.35	X	▲	X	●
PTL-69-430	▲	B-430	750	Clear	0.350	0.150	8.89	3.81	X	▲	X	●
PTL-71-430	▲	B-430	750	Clear	0.350	0.200	8.89	5.08	X	▲	X	●
PTL-3-423	▲	B-423	500	White	0.375	0.375	9.53	9.53	X	▲	X	●
PTL-4-423	▲	B-423	500	White	0.400	0.400	10.16	10.16	X	▲	X	●
PTL-5-473	▲	B-473	750	White	0.500	0.200	12.70	5.08	X	▲	X	●
PTL-5-422	▲	B-422	750	White	0.500	0.200	12.70	5.08	X	▲	X	●
PTL-5-423	▲	B-423	750	White	0.500	0.200	12.70	5.08	X	▲	X	●

● Yes, this material will work with this application. X No, this material does not work with this application.
 ▲ In extreme high temperatures, testing of these materials is recommended.

continued on page 19

Circuit Board and Component Labels



Pre-Cut Labels *continued from page 18*

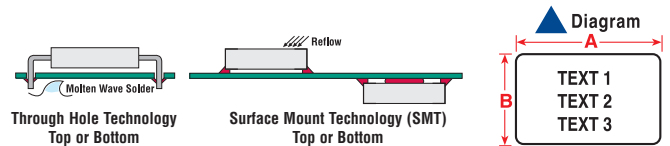
Catalog Number	Diagram	Material	Labels per Roll	Color	Dimensions - inches		Dimensions - mm		Surface Mount Technology (SMT)	Through Hole Technology - Top	Through Hole Technology - Bottom	After Process
					A	B	A	B				
PTL-6-473	▲	B-473	750	White	0.500	0.275	12.70	6.99	X	▲	X	●
PTL-6-423	▲	B-423	750	White	0.500	0.275	12.70	6.99	X	▲	X	●
PTL-6-430	▲	B-430	750	Clear	0.500	0.275	12.70	6.99	X	▲	X	●
PTL-44-422	▲	B-422	500	White	0.500	0.375	12.70	9.53	X	▲	X	●
PTL-44-430	▲	B-430	500	Clear	0.500	0.375	12.70	9.53	X	▲	X	●
PTL-7-422	▲	B-422	500	White	0.500	0.500	12.70	12.70	X	▲	X	●
PTL-7-423	▲	B-423	500	White	0.500	0.500	12.70	12.70	X	▲	X	●
BPTL-7-423	▲	B-423	5000	White	0.500	0.500	12.70	12.70	X	▲	X	●
PTL-7-430	▲	B-430	500	Clear	0.500	0.500	12.70	12.70	X	▲	X	●
PTL-39-422	▲	B-422	750	White	0.600	0.375	15.24	9.53	X	▲	X	●
PTL-39-430	▲	B-430	750	Clear	0.600	0.375	15.24	9.53	X	▲	X	●
PTL-9-473	▲	B-473	750	White	0.650	0.200	16.51	5.08	X	▲	X	●
PTL-9-423	▲	B-423	750	White	0.650	0.200	16.51	5.08	X	▲	X	●
PTL-85-430	▲	B-430	750	Clear	0.740	0.240	18.80	6.10	X	▲	X	●
PTL-99-430	▲	B-430	750	Clear	0.740	0.320	18.80	8.13	X	▲	X	●
PTL-10-473	▲	B-473	750	White	0.750	0.250	19.05	6.35	X	▲	X	●
PTL-10-423	▲	B-423	750	White	0.750	0.250	19.05	6.35	X	▲	X	●
PTL-80-488	◇	B-488	250	White	0.750	0.900	19.05	22.86	X	▲	X	●
PTL-13-423	▲	B-423	750	White	0.900	0.250	22.86	6.35	X	▲	X	●
PTL-97-488	▲	B-488	250	White	0.900	0.900	22.86	22.86	X	▲	X	●
PTL-14-423	▲	B-423	750	White	1.000	0.187	25.40	4.75	X	▲	X	●
PTL-15-423	▲	B-423	750	White	1.000	0.275	25.40	6.99	X	▲	X	●
PTL-15-428	▲	B-428	750	Silver	1.000	0.275	25.40	6.99	X	▲	X	●
PTL-16-473	▲	B-473	500	White	1.000	0.375	25.40	9.53	X	▲	X	●
PTL-16-422	▲	B-422	500	White	1.000	0.375	25.40	9.53	X	▲	X	●
PTL-16-423	▲	B-423	500	White	1.000	0.375	25.40	9.53	X	▲	X	●
BPTL-16-423	▲	B-423	5000	White	1.000	0.375	25.40	9.53	X	▲	X	●
PTL-16-430	▲	B-430	500	Clear	1.000	0.375	25.40	9.53	X	▲	X	●
PTL-17-473	▲	B-473	500	White	1.000	0.500	25.40	12.70	X	▲	X	●
PTL-17-422	▲	B-422	500	White	1.000	0.500	25.40	12.70	X	▲	X	●
PTL-17-423	▲	B-423	500	White	1.000	0.500	25.40	12.70	X	▲	X	●
BPTL-17-423	▲	B-423	5000	White	1.000	0.500	25.40	12.70	X	▲	X	●
PTL-17-428	▲	B-428	500	Silver	1.000	0.500	25.40	12.70	X	▲	X	●
BPTL-17-428	▲	B-428	5000	Silver	1.000	0.500	25.40	12.70	X	▲	X	●
PTL-17-430	▲	B-430	500	Clear	1.000	0.500	25.40	12.70	X	▲	X	●
PTL-19-422	▲	B-422	250	White	1.000	1.000	25.40	25.40	X	▲	X	●
PTL-19-423	▲	B-423	250	White	1.000	1.000	25.40	25.40	X	▲	X	●
BPTL-19-423	▲	B-423	2500	White	1.000	1.000	25.40	25.40	X	▲	X	●
PTL-25-423	▲	B-423	750	White	1.250	0.250	31.75	6.35	X	▲	X	●
PTL-27-423	▲	B-423	750	White	1.500	0.125	38.10	3.18	X	▲	X	●
PTL-28-473	▲	B-473	750	White	1.500	0.250	38.10	6.35	X	▲	X	●
PTL-28-423	▲	B-423	750	White	1.500	0.250	38.10	6.35	X	▲	X	●
PTL-28-430	▲	B-430	750	Clear	1.500	0.250	38.10	6.35	X	▲	X	●
PTL-45-422	▲	B-422	500	White	1.500	0.375	38.10	9.53	X	▲	X	●
PTL-45-430	▲	B-430	500	Clear	1.500	0.375	38.10	9.53	X	▲	X	●
PTL-29-422	▲	B-422	500	White	1.500	0.500	38.10	12.70	X	▲	X	●
PTL-29-423	▲	B-423	500	White	1.500	0.500	38.10	12.70	X	▲	X	●
BPTL-29-423	▲	B-423	5000	White	1.500	0.500	38.10	12.70	X	▲	X	●
PTL-29-428	▲	B-428	500	Silver	1.500	0.500	38.10	12.70	X	▲	X	●
PTL-29-430	▲	B-430	500	Clear	1.500	0.500	38.10	12.70	X	▲	X	●
PTL-29-459	▲	B-459	500	White	1.500	0.500	38.10	12.70	X	▲	X	●
PTL-30-422	▲	B-422	250	White	1.500	0.750	38.10	19.05	X	▲	X	●
PTL-30-459	▲	B-459	250	White	1.500	0.750	38.10	19.05	X	▲	X	●
PTL-31-423	▲	B-423	250	White	1.500	1.000	38.10	25.40	X	▲	X	●
PTL-32-422	▲	B-422	250	White	1.500	1.500	38.10	38.10	X	▲	X	●
PTL-32-423	▲	B-423	250	White	1.500	1.500	38.10	38.10	X	▲	X	●
PTL-81-488	▲	B-488	750	White	1.900	0.250	48.26	6.35	X	▲	X	●
PTL-78-488	▲	B-488	250	White	1.900	1.000	48.26	25.40	X	▲	X	●
PTL-2-423	▲	B-423	100	White	2.000	0.250	50.80	6.35	X	▲	X	●
PTL-20-422	▲	B-422	100	White	2.000	1.000	50.80	25.40	X	▲	X	●

● Yes, this material will work with this application. X No, this material does not work with this application.
▲ In extreme high temperatures, testing of these materials is recommended.

continued on page 20

Brady also offers custom label solutions to meet your needs, designed to your exact specification. Call 1-888-272-3946.

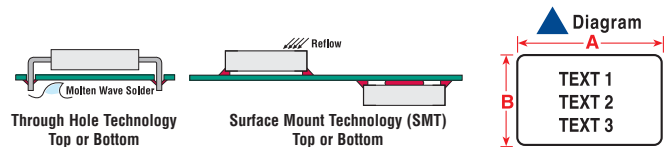
Circuit Board and Component Labels



Pre-Cut Labels *continued from page 19*

Catalog Number	Diagram	Material	Labels per Roll	Color	Dimensions - inches		Dimensions - mm		Surface Mount Technology (SMT)	Through Hole Technology - Top	Through Hole Technology - Bottom	After Process
					A	B	A	B				
BPTL-20-422	▲	B-422	1000	White	2.000	1.000	50.80	25.40	X	▲	X	●
PTL-20-423	▲	B-423	100	White	2.000	1.000	50.80	25.40	X	▲	X	●
BPTL-20-423	▲	B-423	1000	White	2.000	1.000	50.80	25.40	X	▲	X	●
PTL-20-428	▲	B-428	100	Silver	2.000	1.000	50.80	25.40	X	▲	X	●
BPTL-20-428	▲	B-428	1000	Silver	2.000	1.000	50.80	25.40	X	▲	X	●
PTL-20-459	▲	B-459	100	White	2.000	1.000	50.80	25.40	X	▲	X	●
PTL-26-423	▲	B-423	100	White	2.750	1.250	69.85	31.75	X	▲	X	●
PTL-26-428	▲	B-428	100	Silver	2.750	1.250	69.85	31.75	X	▲	X	●
PTL-26-459	▲	B-459	100	White	2.750	1.250	69.85	31.75	X	▲	X	●
PTL-22-422	▲	B-422	100	White	3.000	1.000	76.20	25.40	X	▲	X	●
PTL-22-423	▲	B-423	100	White	3.000	1.000	76.20	25.40	X	▲	X	●
PTL-22-428	▲	B-428	100	Silver	3.000	1.000	76.20	25.40	X	▲	X	●
PTL-22-459	▲	B-459	100	White	3.000	1.000	76.20	25.40	X	▲	X	●
PTL-37-422	▲	B-422	100	White	3.000	1.900	76.20	48.26	X	▲	X	●
PTL-37-423	▲	B-423	100	White	3.000	1.900	76.20	48.26	X	▲	X	●
PTL-37-428	▲	B-428	100	Silver	3.000	1.900	76.20	48.26	X	▲	X	●
PTL-37-459	▲	B-459	100	White	3.000	1.900	76.20	48.26	X	▲	X	●
PTL-23-422	▲	B-422	100	White	4.000	1.000	101.60	25.40	X	▲	X	●
PTL-23-423	▲	B-423	100	White	4.000	1.000	101.60	25.40	X	▲	X	●
PTL-38-422	▲	B-422	100	White	4.000	1.900	101.60	48.26	X	▲	X	●
PTL-38-423	▲	B-423	100	White	4.000	1.900	101.60	48.26	X	▲	X	●
PTL-38-428	▲	B-428	100	Silver	4.000	1.900	101.60	48.26	X	▲	X	●
PTL-38-459	▲	B-459	100	White	4.000	1.900	101.60	48.26	X	▲	X	●

- Yes, this material will work with this application. X No, this material does not work with this application.
- ▲ In extreme high temperatures, testing of these materials is recommended.



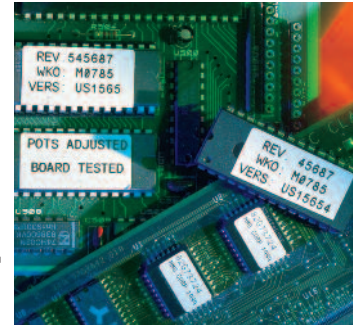
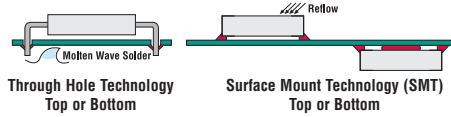
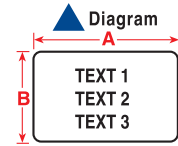
Polyimides Diagram = ▲

Catalog Number	Material	Labels per Roll	Color	Dimensions - inches		Dimensions - mm		Maximum Bar Code Characters	Through Hole Technology Top	Through Hole Technology - Bottom	Surface Mount Technology (SMT)	After Process
				A	B	A	B					
PTL-1-426	B-426	750	Amber	0.250	0.250	6.35	6.35	0	●	●	●	●
PTL-1-457	B-457	750	White	0.250	0.250	6.35	6.35	0	●	●	●	●
PTL-1-477	B-477	750	White	0.250	0.250	6.35	6.35	0	●	●	●	●
PTL-1-478	B-478	750	White	0.250	0.250	6.35	6.35	0	●	●	●	●
PTL-1-479	B-479	750	White	0.250	0.250	6.35	6.35	0	●	●	●	●
PTL-1-495	B-495	750	White	0.250	0.250	6.35	6.35	0	●	X	●	●
PTL-3-426	B-426	500	Amber	0.375	0.375	9.53	9.53	0	●	●	●	●
PTL-3-457	B-457	500	White	0.375	0.375	9.53	9.53	0	●	●	●	●
PTL-3-477	B-477	500	White	0.375	0.375	9.53	9.53	0	●	●	●	●
PTL-3-478	B-478	500	White	0.375	0.375	9.53	9.53	0	●	●	●	●
PTL-3-479	B-479	500	White	0.375	0.375	9.53	9.53	0	●	●	●	●
PTL-3-495	B-495	500	White	0.375	0.375	9.53	9.53	0	●	X	●	●
PTL-4-426	B-426	500	Amber	0.400	0.400	10.16	10.16	0	●	●	●	●
PTL-4-457	B-457	500	White	0.400	0.400	10.16	10.16	0	●	●	●	●
PTL-4-478	B-478	500	White	0.400	0.400	10.16	10.16	0	●	●	●	●
PTL-4-479	B-479	500	White	0.400	0.400	10.16	10.16	0	●	●	●	●
PTL-4-495	B-495	500	White	0.400	0.400	10.16	10.16	0	●	X	●	●
PTL-6-426	B-426	750	Amber	0.500	0.275	12.70	6.99	0	●	●	●	●
PTL-6-457	B-457	750	White	0.500	0.275	12.70	6.99	0	●	●	●	●
PTL-6-478	B-478	750	White	0.500	0.275	12.70	6.99	0	●	●	●	●
PTL-6-479	B-479	750	White	0.500	0.275	12.70	6.99	0	●	●	●	●
PTL-6-495	B-495	750	White	0.500	0.275	12.70	6.99	0	●	X	●	●
PTL-9-426	B-426	750	Amber	0.650	0.200	16.51	5.08	2	●	●	●	●
PTL-9-457	B-457	750	White	0.650	0.200	16.51	5.08	2	●	●	●	●
PTL-9-477	B-477	750	White	0.650	0.200	16.51	5.08	2	●	●	●	●
PTL-9-478	B-478	750	White	0.650	0.200	16.51	5.08	2	●	●	●	●
PTL-9-479	B-479	750	White	0.650	0.200	16.51	5.08	2	●	●	●	●
PTL-9-495	B-495	750	White	0.650	0.200	16.51	5.08	2	●	X	●	●

- Yes, this material will work with this application. X No, this material does not work with this application.

continued on page 21

Circuit Board and Component Labels



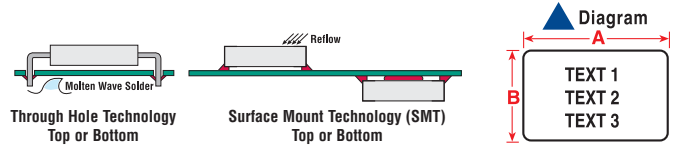
Polyimides Diagram = ▲ *continued from page 20*

Catalog Number	Material	Labels per Roll	Color	Dimensions - inches		Dimensions - mm		Maximum Bar Code Characters	Through Hole Technology Top	Through Hole Technology - Bottom	Surface Mount Technology (SMT)	After Process
				A	B	A	B					
PTL-10-426	B-426	750	Amber	0.750	0.250	19.05	6.35	2	●	●	●	●
PTL-10-457	B-457	750	White	0.750	0.250	19.05	6.35	2	●	●	●	●
PTL-10-477	B-477	750	White	0.750	0.250	19.05	6.35	2	●	●	●	●
PTL-10-478	B-478	750	White	0.750	0.250	19.05	6.35	2	●	●	●	●
PTL-10-479	B-479	750	White	0.750	0.250	19.05	6.35	2	●	●	●	●
PTL-10-495	B-495	750	White	0.750	0.250	19.05	6.35	2	●	X	●	●
PTL-13-426	B-426	750	Amber	0.900	0.250	22.86	6.35	4	●	●	●	●
PTL-13-457	B-457	750	White	0.900	0.250	22.86	6.35	4	●	●	●	●
PTL-13-478	B-478	750	White	0.900	0.250	22.86	6.35	4	●	●	●	●
PTL-13-479	B-479	750	White	0.900	0.250	22.86	6.35	4	●	●	●	●
PTL-13-495	B-495	750	White	0.900	0.250	22.86	6.35	4	●	X	●	●
PTL-14-457	B-457	750	White	1.000	0.187	25.40	4.75	4	●	●	●	●
PTL-14-477	B-477	750	White	1.000	0.187	25.40	4.75	4	●	●	●	●
PTL-14-478	B-478	750	White	1.000	0.187	25.40	4.75	4	●	●	●	●
PTL-14-479	B-479	750	White	1.000	0.187	25.40	4.75	4	●	●	●	●
PTL-14-495	B-495	750	White	1.000	0.187	25.40	4.75	4	●	X	●	●
PTL-16-426	B-426	500	Amber	1.000	0.375	25.40	9.53	4	●	●	●	●
PTL-16-457	B-457	500	White	1.000	0.375	25.40	9.53	4	●	●	●	●
PTL-16-478	B-478	500	White	1.000	0.375	25.40	9.53	4	●	●	●	●
PTL-16-479	B-479	500	White	1.000	0.375	25.40	9.53	4	●	●	●	●
PTL-16-495	B-495	500	White	1.000	0.375	25.40	9.53	4	●	X	●	●
PTL-17-426	B-426	500	Amber	1.000	0.500	25.40	12.70	6	●	●	●	●
PTL-17-478	B-478	500	White	1.000	0.500	25.40	12.70	6	●	●	●	●
PTL-17-479	B-479	500	White	1.000	0.500	25.40	12.70	6	●	●	●	●
PTL-17-495	B-495	500	White	1.000	0.500	25.40	12.70	6	●	X	●	●
PTL-25-426	B-426	750	Amber	1.250	0.250	31.75	6.35	6	●	●	●	●
PTL-25-457	B-457	750	White	1.250	0.250	31.75	6.35	6	●	●	●	●
PTL-25-477	B-477	750	White	1.250	0.250	31.75	6.35	6	●	●	●	●
PTL-25-478	B-478	750	White	1.250	0.250	31.75	6.35	6	●	●	●	●
PTL-25-479	B-479	750	White	1.250	0.250	31.75	6.35	6	●	●	●	●
PTL-25-495	B-495	750	White	1.250	0.250	31.75	6.35	6	●	X	●	●
PTL-27-426	B-426	750	Amber	1.500	0.125	38.10	3.18	8	●	●	●	●
PTL-27-457	B-457	750	White	1.500	0.125	38.10	3.18	8	●	●	●	●
PTL-27-477	B-477	750	White	1.500	0.125	38.10	3.18	8	●	●	●	●
PTL-27-478	B-478	750	White	1.500	0.125	38.10	3.18	8	●	●	●	●
PTL-27-479	B-479	750	White	1.500	0.125	38.10	3.18	8	●	●	●	●
PTL-27-495	B-495	750	White	1.500	0.125	38.10	3.18	8	●	X	●	●
PTL-28-426	B-426	750	Amber	1.500	0.250	38.10	6.35	8	●	●	●	●
PTL-28-457	B-457	750	White	1.500	0.250	38.10	6.35	8	●	●	●	●
PTL-28-477	B-477	750	White	1.500	0.250	38.10	6.35	8	●	●	●	●
PTL-28-478	B-478	750	White	1.500	0.250	38.10	6.35	8	●	●	●	●
PTL-28-479	B-479	750	White	1.500	0.250	38.10	6.35	8	●	●	●	●
PTL-28-495	B-495	750	White	1.500	0.250	38.10	6.35	8	●	X	●	●
PTL-2-426	B-426	100	Amber	2.000	0.250	50.80	6.35	11	●	●	●	●
PTL-2-457	B-457	100	White	2.000	0.250	50.80	6.35	11	●	●	●	●
PTL-2-477	B-477	100	White	2.000	0.250	50.80	6.35	11	●	●	●	●
PTL-2-478	B-478	100	White	2.000	0.250	50.80	6.35	11	●	●	●	●
PTL-2-479	B-479	100	White	2.000	0.250	50.80	6.35	11	●	●	●	●
PTL-2-495	B-495	100	White	2.000	0.250	50.80	6.35	11	●	X	●	●

● Yes, this material will work with this application. X No, this material does not work with this application.

Brady also offers custom label solutions to meet your needs, designed to your exact specification. Call 1-888-272-3946.

Circuit Board and Component Labels

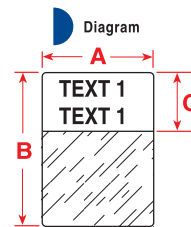


Tedlar® (B-437) Diagram = ▲

Catalog Number	Labels per Roll	Dimensions - inches		Dimensions - mm		Maximum Bar Code Characters	Through Hole Technology - Top	Through Hole Technology - Bottom	Surface Mount Technology (SMT)	After Process
		A	B	A	B					
PTL-9-437	750	0.650	0.200	16.51	5.08	2	▲	X	X	●
PTL-10-437	750	0.750	0.250	19.05	6.35	2	▲	X	X	●
PTL-15-437	750	1.000	0.275	25.40	6.99	4	▲	X	X	●
PTL-29-437	500	1.500	0.500	38.10	12.70	8	▲	X	X	●

- Yes, this material will work with this application.
 - ▲ In extreme high temperatures, testing of these materials is recommended.
 - X No, this material does not work with this application.
- Tedlar® is a registered trademark of DuPont

Datacomm Labels



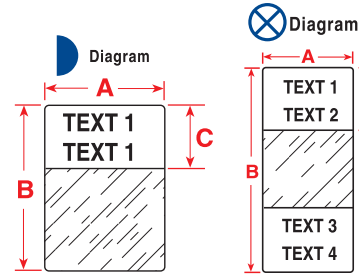
Communications Cabling, Self-Laminating Vinyl (B-427)

Catalog Number	Diagram	Labels per Roll	Color	Dimensions - inches			Dimensions - mm			Application
				A	B	C	A	B	C	
PTL-19-427	▶	250	White	1.000	1.000	0.375	25.40	25.40	9.53	2 Pair Fiber, Single/Multi-Mode
BPTL-19-427	▶	2500	White	1.000	1.000	0.375	25.40	25.40	9.53	2 Pair Fiber, Single/Multi-Mode
PTL-19-427-BL	▶	250	Blue	1.000	1.000	0.375	25.40	25.40	9.53	2 Pair Fiber, Single/Multi-Mode
PTL-19-427-BR	▶	250	Brown	1.000	1.000	0.375	25.40	25.40	9.53	2 Pair Fiber, Single/Multi-Mode
PTL-19-427-GR	▶	250	Green	1.000	1.000	0.375	25.40	25.40	9.53	2 Pair Fiber, Single/Multi-Mode
PTL-19-427-GY	▶	250	Gray	1.000	1.000	0.375	25.40	25.40	9.53	2 Pair Fiber, Single/Multi-Mode
PTL-19-427-OR	▶	250	Orange	1.000	1.000	0.375	25.40	25.40	9.53	2 Pair Fiber, Single/Multi-Mode
PTL-19-427-PL	▶	250	Purple	1.000	1.000	0.375	25.40	25.40	9.53	2 Pair Fiber, Single/Multi-Mode
PTL-19-427-RD	▶	250	Red	1.000	1.000	0.375	25.40	25.40	9.53	2 Pair Fiber, Single/Multi-Mode
PTL-19-427-YL	▶	250	Yellow	1.000	1.000	0.375	25.40	25.40	9.53	2 Pair Fiber, Single/Multi-Mode
PTL-31-427	▶	250	White	1.000	1.500	0.500	25.40	38.10	12.70	4 Pair UTP, CAT 5, CAT 5E, CAT 6, Silver Satin, UTP Copper, RG-6 Coax, RG-59 Coax
BPTL-31-427	▶	2500	White	1.000	1.500	0.500	25.40	38.10	12.70	4 Pair UTP, CAT 5, CAT 5E, CAT 6, Silver Satin, UTP Copper, RG-6 Coax, RG-59 Coax
PTL-31-427-BL	▶	250	Blue	1.000	1.500	0.500	25.40	38.10	12.70	4 Pair UTP, CAT 5, CAT 5E, CAT 6, Silver Satin, UTP Copper, RG-6 Coax, RG-59 Coax
PTL-31-427-BR	▶	250	Brown	1.000	1.500	0.500	25.40	38.10	12.70	4 Pair UTP, CAT 5, CAT 5E, CAT 6, Silver Satin, UTP Copper, RG-6 Coax, RG-59 Coax
PTL-31-427-GR	▶	250	Green	1.000	1.500	0.500	25.40	38.10	12.70	4 Pair UTP, CAT 5, CAT 5E, CAT 6, Silver Satin, UTP Copper, RG-6 Coax, RG-59 Coax
PTL-31-427-GY	▶	250	Gray	1.000	1.500	0.500	25.40	38.10	12.70	4 Pair UTP, CAT 5, CAT 5E, CAT 6, Silver Satin, UTP Copper, RG-6 Coax, RG-59 Coax
PTL-31-427-OR	▶	250	Orange	1.000	1.500	0.500	25.40	38.10	12.70	4 Pair UTP, CAT 5, CAT 5E, CAT 6, Silver Satin, UTP Copper, RG-6 Coax, RG-59 Coax
PTL-31-427-PL	▶	250	Purple	1.000	1.500	0.500	25.40	38.10	12.70	4 Pair UTP, CAT 5, CAT 5E, CAT 6, Silver Satin, UTP Copper, RG-6 Coax, RG-59 Coax
PTL-31-427-RD	▶	250	Red	1.000	1.500	0.500	25.40	38.10	12.70	4 Pair UTP, CAT 5, CAT 5E, CAT 6, Silver Satin, UTP Copper, RG-6 Coax, RG-59 Coax
PTL-31-427-YL	▶	250	Yellow	1.000	1.500	0.500	25.40	38.10	12.70	4 Pair UTP, CAT 5, CAT 5E, CAT 6, Silver Satin, UTP Copper, RG-6 Coax, RG-59 Coax
PTL-21-427	▶	100	White	1.000	2.500	0.750	25.40	63.50	19.05	4 - 12 Pair Fiber, 4 Pair STP, 25 Pair Copper
BPTL-21-427	▶	1000	White	1.000	2.500	0.750	25.40	63.50	19.05	4 - 12 Pair Fiber, 4 Pair STP, 25 Pair Copper
PTL-21-427-BL	▶	100	Blue	1.000	2.500	0.750	25.40	63.50	19.05	4 - 12 Pair Fiber, 4 Pair STP, 25 Pair Copper
PTL-21-427-BR	▶	100	Brown	1.000	2.500	0.750	25.40	63.50	19.05	4 - 12 Pair Fiber, 4 Pair STP, 25 Pair Copper
PTL-21-427-GR	▶	100	Green	1.000	2.500	0.750	25.40	63.50	19.05	4 - 12 Pair Fiber, 4 Pair STP, 25 Pair Copper
PTL-21-427-GY	▶	100	Gray	1.000	2.500	0.750	25.40	63.50	19.05	4 - 12 Pair Fiber, 4 Pair STP, 25 Pair Copper

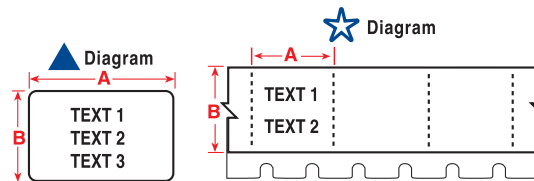
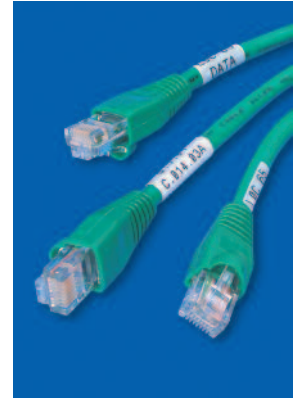
continued on page 23

Datacomm Labels

Communications Cabling, Self-Laminating Vinyl (B-427) *continued from page 22*



Catalog Number	Diagram	Labels per Roll	Color	Dimensions - inches			Dimensions - mm			Application
				A	B	C	A	B	C	
PTL-21-427-OR	▶	100	Orange	1.000	2.500	0.750	25.40	63.50	19.05	4 - 12 Pair Fiber, 4 Pair STP, 25 Pair Copper
PTL-21-427-PL	▶	100	Purple	1.000	2.500	0.750	25.40	63.50	19.05	4 - 12 Pair Fiber, 4 Pair STP, 25 Pair Copper
PTL-21-427-RD	▶	100	Red	1.000	2.500	0.750	25.40	63.50	19.05	4 - 12 Pair Fiber, 4 Pair STP, 25 Pair Copper
PTL-21-427-YL	▶	100	Yellow	1.000	2.500	0.750	25.40	63.50	19.05	4 - 12 Pair Fiber, 4 Pair STP, 25 Pair Copper
PTL-64-427	⊗	100	White	1.000	3.375	1.125	25.40	85.73	28.58	CAT 5, 4 Pair UTP Copper
BPTL-64-427	⊗	1000	White	1.000	3.375	1.125	25.40	85.73	28.58	CAT 5, 4 Pair UTP Copper
PTL-23-427	▶	100	White	1.000	4.000	1.000	25.40	101.60	25.40	Backbone Cable, 24 Pair Fiber, 50 Pair Copper
BPTL-23-427	▶	1000	White	1.000	4.000	1.000	25.40	101.60	25.40	Backbone Cable, 24 Pair Fiber, 50 Pair Copper
PTL-23-427-BL	▶	100	Blue	1.000	4.000	1.000	25.40	101.60	25.40	Backbone Cable, 24 Pair Fiber, 50 Pair Copper
PTL-23-427-BR	▶	100	Brown	1.000	4.000	1.000	25.40	101.60	25.40	Backbone Cable, 24 Pair Fiber, 50 Pair Copper
PTL-23-427-GR	▶	100	Green	1.000	4.000	1.000	25.40	101.60	25.40	Backbone Cable, 24 Pair Fiber, 50 Pair Copper
PTL-23-427-GY	▶	100	Gray	1.000	4.000	1.000	25.40	101.60	25.40	Backbone Cable, 24 Pair Fiber, 50 Pair Copper
PTL-23-427-OR	▶	100	Orange	1.000	4.000	1.000	25.40	101.60	25.40	Backbone Cable, 24 Pair Fiber, 50 Pair Copper
PTL-23-427-PL	▶	100	Purple	1.000	4.000	1.000	25.40	101.60	25.40	Backbone Cable, 24 Pair Fiber, 50 Pair Copper
PTL-23-427-RD	▶	100	Red	1.000	4.000	1.000	25.40	101.60	25.40	Backbone Cable, 24 Pair Fiber, 50 Pair Copper
PTL-23-427-YL	▶	100	Yellow	1.000	4.000	1.000	25.40	101.60	25.40	Backbone Cable, 24 Pair Fiber, 50 Pair Copper
PTL-33-427	▶	100	White	1.500	4.000	1.000	38.10	101.60	25.40	50 Pair Copper, 24 Pair Fiber
BPTL-33-427	▶	500	White	1.500	4.000	1.000	38.10	101.60	25.40	50 Pair Copper, 24 Pair Fiber
PTL-33-427-BL	▶	100	Blue	1.500	4.000	1.000	38.10	101.60	25.40	50 Pair Copper, 24 Pair Fiber
PTL-33-427-BR	▶	100	Brown	1.500	4.000	1.000	38.10	101.60	25.40	50 Pair Copper, 24 Pair Fiber
PTL-33-427-GR	▶	100	Green	1.500	4.000	1.000	38.10	101.60	25.40	50 Pair Copper, 24 Pair Fiber
PTL-33-427-GY	▶	100	Gray	1.500	4.000	1.000	38.10	101.60	25.40	50 Pair Copper, 24 Pair Fiber
PTL-33-427-OR	▶	100	Orange	1.500	4.000	1.000	38.10	101.60	25.40	50 Pair Copper, 24 Pair Fiber
PTL-33-427-PL	▶	100	Purple	1.500	4.000	1.000	38.10	101.60	25.40	50 Pair Copper, 24 Pair Fiber
PTL-33-427-RD	▶	100	Red	1.500	4.000	1.000	38.10	101.60	25.40	50 Pair Copper, 24 Pair Fiber
PTL-33-427-YL	▶	100	Yellow	1.500	4.000	1.000	38.10	101.60	25.40	50 Pair Copper, 24 Pair Fiber
PTL-34-427	▶	50	White	1.500	6.000	1.500	38.10	152.40	38.10	100 Pair Copper, 36 Pair Fiber
BPTL-34-427	▶	500	White	1.500	6.000	1.500	38.10	152.40	38.10	100 Pair Copper, 36 Pair Fiber
PTL-34-427-BL	▶	50	Blue	1.500	6.000	1.500	38.10	152.40	38.10	100 Pair Copper, 36 Pair Fiber
PTL-34-427-BR	▶	50	Brown	1.500	6.000	1.500	38.10	152.40	38.10	100 Pair Copper, 36 Pair Fiber
PTL-34-427-GR	▶	50	Green	1.500	6.000	1.500	38.10	152.40	38.10	100 Pair Copper, 36 Pair Fiber
PTL-34-427-GY	▶	50	Gray	1.500	6.000	1.500	38.10	152.40	38.10	100 Pair Copper, 36 Pair Fiber
PTL-34-427-OR	▶	50	Orange	1.500	6.000	1.500	38.10	152.40	38.10	100 Pair Copper, 36 Pair Fiber
PTL-34-427-PL	▶	50	Purple	1.500	6.000	1.500	38.10	152.40	38.10	100 Pair Copper, 36 Pair Fiber
PTL-34-427-RD	▶	50	Red	1.500	6.000	1.500	38.10	152.40	38.10	100 Pair Copper, 36 Pair Fiber
PTL-34-427-YL	▶	50	Yellow	1.500	6.000	1.500	38.10	152.40	38.10	100 Pair Copper, 36 Pair Fiber
PTL-66-427	▶	100	White	1.938	3.150	1.000	49.23	80.00	25.40	Backbone Cable, 50 Pair Copper, 24 Pair Fiber

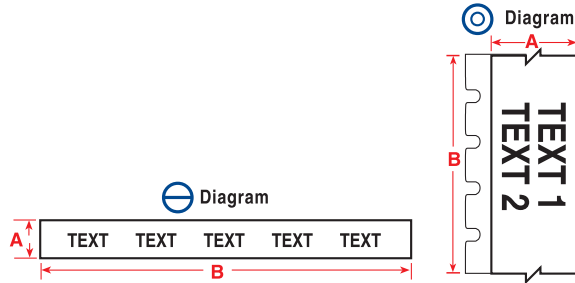


Patch Panel Labels

Catalog Number	Diagram	Material	Labels per Roll	Color	Dimensions - inches		Dimensions - mm		
					A	B	A	B	
Patch Panel - 4 and 6 Port									
PTL-39-422	★	B-422	750	White	0.600	0.375	15.24	9.53	
PTL-39-430	★	B-422	750	Clear	0.600	0.375	15.24	9.53	
Patch Panel - ID Port									
PTL-44-430	▲	B-430	500	Clear	0.500	0.375	12.70	9.53	
PTL-44-422	▲	B-422	500	White	0.500	0.375	12.70	9.53	
PTL-7-430	▲	B-430	500	Clear	0.500	0.500	12.70	12.70	
PTL-7-422	▲	B-422	500	White	0.500	0.500	12.70	12.70	
PTL-11-432	▲	B-432	500	Clear	0.750	0.500	19.05	12.70	
PTL-10-423	▲	B-423	750	White	0.750	0.250	19.05	6.35	
PTL-10-432	▲	B-432	750	Clear	0.750	0.250	19.05	6.35	

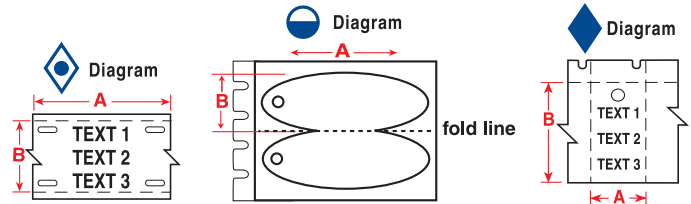


Datacomm Labels



Patch Panel Continuous Tapes and Strips

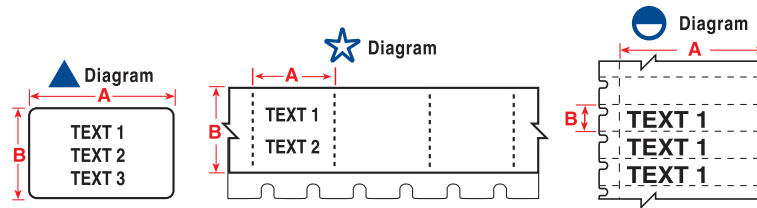
Catalog Number	Diagram	Material	Color	Dimensions - inches		Dimensions - mm	
				A	B	A	B
Continuous Tapes							
PTL-101-432	⊙	B-432	Clear	0.250	50 ft.	6.35	15.24 m
PTL-101-483	⊙	B-483	White	0.250	50 ft.	6.35	15.24 m
PTL-101-489	⊙	B-489	White	0.250	50 ft.	6.35	15.24 m
PTL-46-422	⊙	B-422	White	0.375	50 ft.	9.53	15.24 m
PTL-46-430	⊙	B-430	Clear	0.375	50 ft.	9.53	15.24 m
Broadcast Patch Bay Strips							
PTL-55-412	⊖	B-412	White	0.230	50 ft.	5.84	15.24 m
PTL-56-412	⊖	B-412	White	0.375	50 ft.	9.53	15.24 m
PTL-57-412	⊖	B-412	White	0.500	50 ft.	12.70	15.24 m
PTL-58-412	⊖	B-412	White	0.535	50 ft.	13.59	15.24 m
PTL-59-412	⊖	B-412	White	0.785	50 ft.	19.94	15.24 m



Power and Ground Cable Labels

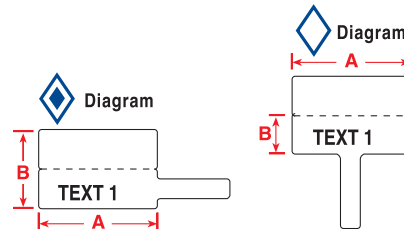
Catalog Number	Diagram	Material	Labels per Roll	Color	Dimensions - inches		Dimensions - mm		Application
					A	B	A	B	
PTL-36-109	◆	B-109	250	White	1.125	1.750	28.57	44.45	Panel Identification, Voice/Data Identification, Wire & Cable Marking
PTL-111-145-GY	⊖	B-145	100	Gray	1.206	0.758	30.63	19.25	Wire & Cable Marking, Panel Identification, Voice/Data Identification
PTL-111-145-FR	⊖	B-145	100	Gray	1.206	0.758	30.63	19.25	Wire & Cable Marking, Flame Retardant, Voice/Data Identification
BPTL-111-145-GY	⊖	B-145	1000	Gray	1.206	0.758	30.63	19.25	Wire & Cable Marking, Panel Identification, Voice/Data Identification
BPTL-111-145-FR	⊖	B-145	1000	Gray	1.206	0.758	30.63	19.25	Wire & Cable Marking, Flame Retardant, Voice/Data Identification
PTL-110-145-GY	⊖	B-145	100	Gray	1.750	1.000	44.45	25.40	Wire & Cable Marking, Panel Identification, Voice/Data Identification
PTL-110-145-FR	⊖	B-145	100	Gray	1.750	1.000	44.45	25.40	Wire & Cable Marking, Flame Retardant, Voice/Data Identification
BPTL-110-145-GY	⊖	B-145	1000	Gray	1.750	1.000	44.45	25.40	Wire & Cable Marking, Panel Identification, Voice/Data Identification
BPTL-110-145-FR	⊖	B-145	1000	Gray	1.750	1.000	44.45	25.40	Wire & Cable Marking, Flame Retardant, Voice/Data Identification
PTL-12-109	◆	B-109	100	White	3.000	0.750	76.20	19.05	Wire & Cable Marking, Panel Identification, Voice/Data Identification
BPTL-12-109	◆	B-109	1000	White	3.000	0.750	76.20	19.05	Wire & Cable Marking, Panel Identification, Voice/Data Identification

Datacomm Labels



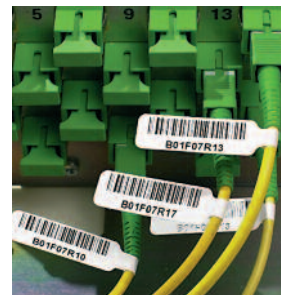
Workstation Labels

Catalog Number	Diagram	Material	Labels per Roll	Color	Dimensions - inches		Dimensions - mm		Application
					A	B	A	B	
Desi-Strip Inserts									
PTL-40-412	⊙	B-412	750	White	1.938	0.375	49.23	9.53	Desi-Strips
BPTL-40-412	⊙	B-412	5000	White	1.938	0.375	49.23	9.53	Desi-Strips
Location ID									
PTL-16-422	▲	B-422	500	White	1.000	0.375	25.40	9.53	1-4 Outlet Faceplates
PTL-16-430	▲	B-430	500	Clear	1.000	0.375	25.40	9.53	1-4 Outlet Faceplates
PTL-17-422	▲	B-422	500	White	1.000	0.500	25.40	12.70	1-4 Outlet Faceplates
PTL-17-430	▲	B-430	500	Clear	1.000	0.500	25.40	12.70	1-4 Outlet Faceplates
PTL-45-422	▲	B-422	500	White	1.500	0.375	38.10	9.53	1-2 Outlet Faceplates
PTL-45-430	▲	B-430	500	Clear	1.500	0.375	38.10	9.53	1-2 Outlet Faceplates
PTL-29-422	▲	B-422	500	White	1.500	0.500	38.10	12.70	1-2 Outlet Faceplates
PTL-29-430	▲	B-430	500	Clear	1.500	0.500	38.10	12.70	1-2 Outlet Faceplates
Outlet/Jack ID									
PTL-39-422	☆	B-422	750	White	0.375	0.600	9.53	15.24	1-6 Outlet Faceplates
PTL-39-430	☆	B-430	750	Clear	0.375	0.600	9.53	15.24	1-6 Outlet Faceplates
PTL-44-422	▲	B-422	500	White	0.500	0.375	12.70	9.53	1-6 Outlet Faceplates
PTL-44-430	▲	B-430	500	Clear	0.500	0.375	12.70	9.53	1-6 Outlet Faceplates
PTL-7-422	▲	B-422	500	White	0.500	0.500	12.70	12.70	1-6 Outlet Faceplates
PTL-7-430	▲	B-430	500	Clear	0.500	0.500	12.70	12.70	1-6 Outlet Faceplates
PTL-68-430	▲	B-430	750	Clear	0.240	0.150	6.10	3.81	Siemen Faceplates
PTL-70-430	▲	B-430	750	Clear	0.240	0.200	6.10	5.08	Siemen Faceplates
PTL-71-430	▲	B-430	750	Clear	0.350	0.200	8.89	5.08	Siemen Faceplates
PTL-69-430	▲	B-430	750	Clear	0.530	0.150	13.46	3.81	Siemen Faceplates
PTL-85-430	▲	B-430	750	Clear	0.740	0.240	18.80	6.10	Siemen Faceplates
PTL-99-430	▲	B-430	750	Clear	0.740	0.320	18.80	8.12	Siemen Faceplates



Fiber Optic Labels/Flags

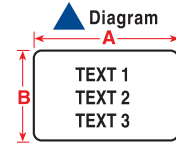
Catalog Number	Diagram	Material	Labels per Roll	Dimensions - inches		Dimensions - mm		Application
				A	B	A	B	
PTLFP-01-425	◇	B-425	250	1.180	0.788	30.00	20.00	Pig-tail and single fiber ID
PTLFP-01-8425	◇	B-8425	250	1.180	0.788	30.00	20.00	Pig-tail and single fiber ID
PTLFT-01-425	◇	B-425	250	1.180	0.788	30.00	20.00	Pig-tail and single fiber ID
PTLFT-01-8425	◇	B-8425	250	1.180	0.788	30.00	20.00	Pig-tail and single fiber ID



Laboratory Labels

FreezerBondz™ Polyester Labels (B-490) Diagram =

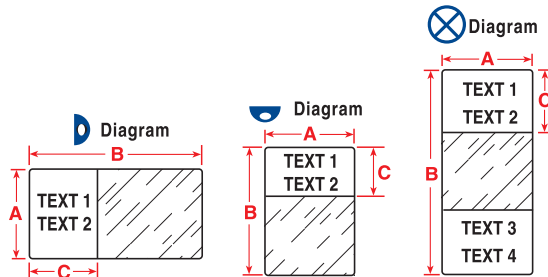
for vials, centrifuge tubes, test tubes, straws, and slides


















Catalog Number	Labels per Roll	Dimensions - inches		Dimensions - mm	
		A	B	A	B
PTL-112-490	500	1.250	0.375	31.75	9.53
PTL-76-490	250	1.625	0.600	41.28	15.24
PTL-78-490	250	1.900	1.000	48.26	25.40
PTL-113-490	100	2.200	1.500	55.88	38.10
PTL-114-490	100	3.875	1.500	98.43	38.10



General Self-Laminating Labels for vials, tubes, straws and more



Catalog Number	Diagram	Material	Labels per Roll	Color	Dimensions - inches			Dimensions - mm		
					A	B	C	A	B	C
PTL-108-461		B-461	750	White	0.187	1.500	0.700	4.75	38.10	17.78
PTL-73-461		B-461	500	White	0.375	1.800	0.375	9.53	45.72	9.53
PTL-72-461		B-461	500	White	0.500	1.800	0.500	12.70	45.72	12.70
PTL-74-461		B-461	100	White	0.500	2.200	0.750	12.70	55.88	19.05
PTL-74-427		B-427	100	White	0.500	2.200	0.750	12.70	55.88	19.05
PTL-76-461		B-461	250	White	0.600	1.625	0.600	15.24	41.28	15.24
PTL-77-461		B-461	250	White	1.500	3.500	1.250	38.10	88.90	31.75
PTL-86-461		B-461	100	White	0.600	2.625	1.000	15.24	66.68	25.40
PTL-79-461		B-461	100	White	0.750	3.750	1.000	19.05	95.25	25.40
PTL-75-461		B-461	100	White	1.000	2.625	1.000	25.40	66.68	25.40
BPTL-75-461		B-461	1000	White	1.000	2.625	1.000	25.40	66.68	25.40
PTL-75-461YL		B-461	100	Yellow	1.000	2.625	1.000	25.40	66.68	25.40
PTL-75-427		B-427	100	White	1.000	2.625	1.000	25.40	66.68	25.40
PTL-64-427		B-427	100	White	1.000	3.375	1.125	25.40	85.73	28.58
BPTL-64-427		B-427	1000	White	1.000	3.375	1.125	25.40	85.73	28.58



More Brady Printers

The right choices for every application. Brady's full line of printers offer heavy-duty construction, versatile design features, and the specialty labels you need for every job. Designed to work with our easy-to-use software applications and our full range of Brady industrial label materials, these printers let you create professional, custom labels quickly, easily, and cost-effectively.

HandiMark® Portable Label Maker

On-the-spot-ID. Create custom labels wherever you need them at a fraction of the cost of custom printed or engraved labels. You can customize labels with various colors, type styles, and an extensive library of 113 built-in symbols and pictograms with multi-language capability.

Limitless applications, real value:

- Ideal for facility identification, pipe marking, shelf/bin labels, and equipment identification
- More text features including auto framing, multiple sizes of text on one label, bar codes, left/center/right justify text, vertical print and more
- Robust text editing capabilities include text sizes from 0.8" to 1.7", multiple sizes of text on one label, plus bold, italics, and more
- Outdoor-grade vinyl tape in 14 colors, plus reflective, repositionable, and tamper-resistant specialty tapes give you more options



Portable Printers

Engineered for the field. Brady's IDXPERT™ v2.0 Handheld Labeler and ID PAL™ Labeling Tool are portable, thermal transfer printers that are indispensable tools for contractors in the field.

IDXPERT™ v2.0 Handheld Labeler

The IDXPERT v2.0 printer offers crisp printing, easy formatting, and convenient label sizes. Version 2.0 features include:

- Pre-sized and pre-formatted Punch Block ID Strips for 110-blocks, 66-blocks, BIX-blocks, and patch panels
- Pre-sized 1.9" Desi-Strip Faceplate inserts fit into recessed areas commonly found on network port face plates
- More text editing options with 21 font sizes, plus font autosizing, fine-tunable HR barcode fonts, and a narrow-width barcode option



ID PAL™ Labeling Tool

The ID PAL tool is tough, powerful, easy-to-use, and ideal for general one-off labeling. With the ID PAL Labeling Tool, you'll get:

- Intuitive keypad with electrical and datacomm symbols
- Special wire marking mode with 10 preset lengths
- Multiple line printing and serialization

Tagus™ T300 Thermal Transfer Printer

The Choice for Versatility. The Brady Tagus printer is an industrial powerhouse in a small package. With the ability to print up to 3,500 labels per day, this printer is ideal for electrical, industrial, safety, laboratory, health care, and panel shop labeling applications.

Versatile, easy to use, reliable:

- One-button calibration of media – saves time and materials
- Designed for use with Brady performance materials, including thicker raised panel labels
- 300dpi thermal transfer printing for clear, durable labels





Introducing Version 4.0 –

The newest version of the TLS 2200® Thermal Labeling System provides even more value and labeling flexibility, including:

- Increased Processing Speed – nearly 100% faster data processing – so labels print even faster.
- Clearer Graphical Display – increased screen resolution and contrast so on-screen text is easier to read, even in low-light conditions.
- New Sleep Mode – the printer can be set to “sleep” after 1, 3 or 5 minutes of non-use, extending battery life and increasing productivity.
- More Bar Code Symbolologies – including Code 128, IFT 25, and Codabar.

The TLS 2200 v4.0 system is a powerful, portable thermal label printer ideal for datacomm identification, electrical wire and cable marking, industrial labels, nameplate labels, tamper-evident labels, and many other general labeling applications.

For more information visit our website
at www.bradyid.com/tls2200

© 2007 Brady Worldwide, Inc.
All Rights Reserved.
Printed in U.S.A.

10-07-AA-40K



Y37455 MS37455

Brady Worldwide, Inc.
6555 W. Good Hope Road
Milwaukee, WI 53223
1-888-272-3946
www.bradyid.com

Brady Canada
355 Apple Creek Blvd.
Markham, ON L3R 9X7
1-800-272-3946
www.bradycanada.com

 **BRADY**
WHEN PERFORMANCE MATTERS MOST™