

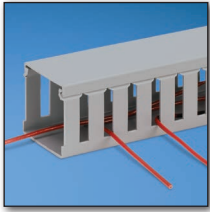
Wiring Duct Product Selection Guide

Organize • Connect • Protect

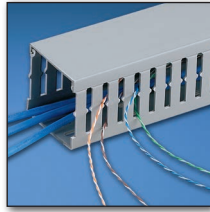
PANDUIT[®]

Comprehensive Wiring Duct Solutions

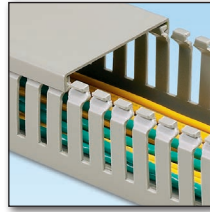
PVC Flush Cover Wiring Duct



**Type G, Wide Slots,
Wide Fingers**

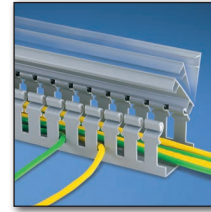


**Type F, Narrow Slots,
Narrow Fingers**

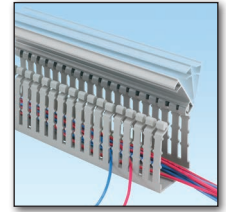


**Type MC, Narrow Slots,
Narrow Fingers, Metric**

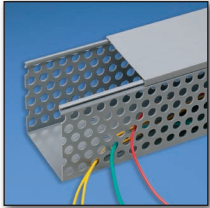
PVC Hinged Cover Wiring Duct



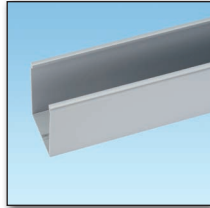
**Type H, Hinged Cover,
Wide Slots**



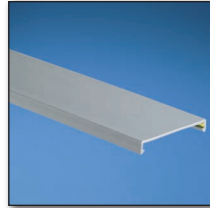
**Type HN, Hinged
Cover, Narrow Slots**



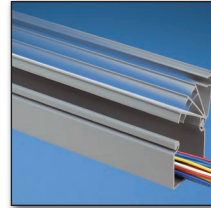
**Type D,
Round Holes**



Type FS, Solid Wall



**Type C Covers for
Type F, G, D, FS, and
MC Wiring Duct**

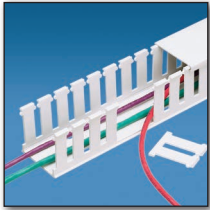


**Type HS, Hinged Cover,
Solid Wall**

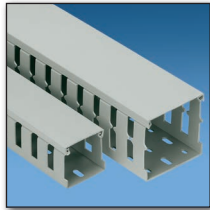


**Type HC Covers
for Type HN, H, and
HS Wiring Duct**

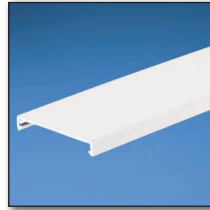
Halogen-Free Wiring Duct



**Type NE,
Halogen Free,
Wide Slots**

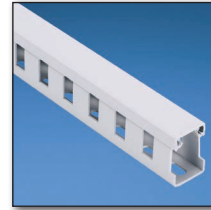


**Type NNC,
Halogen Free,
Wide Slots, Metric**



**Type NC Covers
for Type NE and
NNC Wiring Duct**

Low-Smoke, Halogen-Free Wiring Duct

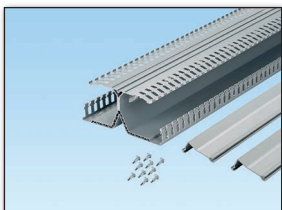


**Type TNC, Low Smoke,
Halogen Free,
Wide Slots, Metric**



**Type TNC Covers for
Type TNC Wiring Duct**

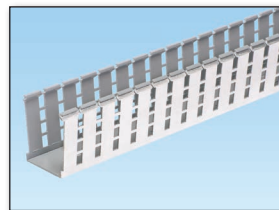
PanelMax™ Space Optimization and Noise Mitigation Products



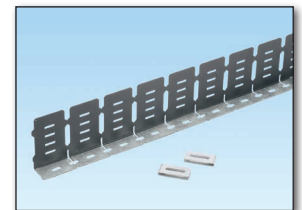
**Type DRD,
DIN Rail Wiring Duct***



**Type CWD,
Corner Wiring Duct
(use 2" Type C Cover)**



Shielded Wiring Duct



EMI Noise Shield

These wiring duct types are sold base and cover separately: G, F, D, FS, HN, H, HS, NE, CWD, and Shielded.

These wiring duct types are sold base and cover together: DRD, NNC, TNC, and MC.

*DIN Rail not included.

Panduct® Type D, G, F and FS Wiring Duct – Wire Fill Capacity

| Nominal Duct Size (W x H) In. | Nominal Area In. ² | Electrical | | | | | | | | | | | | | | | Communication | | | | | | | |
|-------------------------------|-------------------------------|------------|-------|------|--------|-------|-------|--------|-------|-------|--------|-------|-------|--------|-------|---------|---------------|---------|--------|--------|--------|-----------|--------|-------------|
| | | 8 AWG | | | 10 AWG | | | 12 AWG | | | 14 AWG | | | 16 AWG | | | 18 AWG | | | 22 AWG | 23 AWG | 23/24 AWG | 24 AWG | Fiber Cable |
| | | 0.216 | 0.164 | 0.13 | 0.141 | 0.152 | 0.111 | 0.124 | 0.133 | 0.096 | 0.111 | 0.118 | 0.084 | 0.100 | 0.106 | 0.085 | 0.330 | 0.25 | 0.190 | 0.118 | | | | |
| | THHN | THHN | THHN | MTW | MTW | THHN | MTW | MTW | TFFN | MTW | MTW | TFFN | MTW | MTW | MTW | Cat. 6A | Cat. 6 | Cat. 5e | 3.0 mm | | | | | |
| 0.50 x 0.50 | 0.250 | 3 | 5 | 8 | 7 | 6 | 11 | 9 | 8 | 15 | 11 | 10 | 20 | 14 | 12 | 19 | 1 | 2 | 3 | 10 | | | | |
| 0.50 x 1.00 | 0.500 | 6 | 10 | 16 | 14 | 12 | 23 | 18 | 16 | 31 | 23 | 20 | 40 | 28 | 25 | 39 | 2 | 4 | 7 | 20 | | | | |
| 0.50 x 2.00 | 1.000 | 12 | 21 | 33 | 28 | 24 | 46 | 37 | 32 | 62 | 46 | 41 | 80 | 57 | 50 | 79 | 5 | 9 | 15 | 40 | | | | |
| 0.75 x 0.75 | 0.563 | 6 | 11 | 19 | 16 | 13 | 26 | 20 | 18 | 34 | 26 | 23 | 45 | 32 | 28 | 44 | 2 | 5 | 8 | 23 | | | | |
| 0.75 x 1.00 | 0.750 | 9 | 15 | 25 | 21 | 18 | 34 | 27 | 24 | 46 | 34 | 30 | 60 | 42 | 38 | 59 | 3 | 6 | 11 | 30 | | | | |
| 0.75 x 1.50 | 1.125 | 13 | 23 | 38 | 32 | 27 | 52 | 41 | 36 | 69 | 52 | 46 | 91 | 64 | 57 | 88 | 5 | 10 | 17 | 46 | | | | |
| 0.75 x 2.00 | 1.500 | 18 | 31 | 50 | 43 | 37 | 69 | 55 | 48 | 93 | 69 | 61 | 121 | 85 | 76 | 118 | 7 | 13 | 23 | 61 | | | | |
| 1.00 x 1.00 | 1.000 | 12 | 21 | 33 | 28 | 24 | 46 | 37 | 32 | 62 | 46 | 41 | 80 | 57 | 50 | 79 | 5 | 9 | 15 | 40 | | | | |
| 1.00 x 1.50 | 1.500 | 18 | 31 | 50 | 43 | 37 | 69 | 55 | 48 | 93 | 69 | 61 | 121 | 85 | 76 | 118 | 7 | 13 | 23 | 61 | | | | |
| 1.00 x 2.00 | 2.000 | 24 | 42 | 67 | 57 | 49 | 92 | 74 | 64 | 124 | 92 | 82 | 161 | 114 | 101 | 158 | 10 | 18 | 31 | 81 | | | | |
| 1.00 x 3.00 | 3.000 | 36 | 63 | 101 | 86 | 74 | 139 | 111 | 96 | 186 | 139 | 123 | 242 | 171 | 152 | 237 | 15 | 27 | 47 | 122 | | | | |
| 1.00 x 4.00 | 4.000 | 48 | 84 | 135 | 114 | 98 | 185 | 148 | 129 | 248 | 185 | 164 | 323 | 228 | 203 | 316 | 20 | 36 | 63 | 163 | | | | |
| 1.50 x 1.00 | 1.500 | 18 | 31 | 50 | 43 | 37 | 69 | 55 | 48 | 93 | 69 | 61 | 121 | 85 | 76 | 118 | 7 | 13 | 23 | 61 | | | | |
| 1.50 x 1.50 | 2.250 | 27 | 47 | 76 | 64 | 55 | 104 | 83 | 72 | 139 | 104 | 92 | 182 | 128 | 114 | 177 | 11 | 20 | 35 | 92 | | | | |
| 1.50 x 2.00 | 3.000 | 36 | 63 | 101 | 86 | 74 | 139 | 111 | 96 | 186 | 139 | 123 | 242 | 171 | 152 | 237 | 15 | 27 | 47 | 122 | | | | |
| 1.50 x 3.00 | 4.500 | 55 | 95 | 152 | 129 | 111 | 208 | 167 | 145 | 279 | 208 | 184 | 364 | 257 | 228 | 355 | 23 | 41 | 71 | 184 | | | | |
| 1.50 x 4.00 | 6.000 | 73 | 127 | 202 | 172 | 148 | 278 | 222 | 193 | 372 | 278 | 246 | 485 | 342 | 305 | 474 | 31 | 54 | 94 | 245 | | | | |
| 2.00 x 1.00 | 2.000 | 24 | 42 | 67 | 57 | 49 | 92 | 74 | 64 | 124 | 92 | 82 | 161 | 114 | 101 | 158 | 10 | 18 | 31 | 81 | | | | |
| 2.00 x 1.50 | 3.000 | 36 | 63 | 101 | 86 | 74 | 139 | 111 | 96 | 186 | 139 | 123 | 242 | 171 | 152 | 237 | 15 | 27 | 47 | 122 | | | | |
| 2.00 x 2.00 | 4.000 | 48 | 84 | 135 | 114 | 98 | 185 | 148 | 129 | 248 | 185 | 164 | 323 | 228 | 203 | 316 | 20 | 36 | 63 | 163 | | | | |
| 2.00 x 3.00 | 6.000 | 73 | 127 | 202 | 172 | 148 | 278 | 222 | 193 | 372 | 278 | 246 | 485 | 342 | 305 | 474 | 31 | 54 | 94 | 245 | | | | |
| 2.00 x 4.00 | 8.000 | 97 | 169 | 270 | 229 | 197 | 371 | 297 | 258 | 496 | 371 | 328 | 647 | 457 | 406 | 632 | 41 | 73 | 126 | 327 | | | | |
| 2.00 x 5.00 | 10.000 | 122 | 212 | 338 | 287 | 247 | 463 | 371 | 323 | 620 | 463 | 410 | 809 | 571 | 508 | 790 | 52 | 91 | 158 | 409 | | | | |
| 2.50 x 3.00 | 7.500 | 91 | 159 | 253 | 215 | 185 | 347 | 278 | 242 | 465 | 347 | 307 | 607 | 428 | 381 | 593 | 39 | 68 | 118 | 307 | | | | |
| 3.00 x 1.00 | 3.000 | 36 | 63 | 101 | 86 | 74 | 139 | 111 | 96 | 186 | 139 | 123 | 242 | 171 | 152 | 237 | 15 | 27 | 47 | 122 | | | | |
| 3.00 x 2.00 | 6.000 | 73 | 127 | 202 | 172 | 148 | 278 | 222 | 193 | 372 | 278 | 246 | 485 | 342 | 305 | 474 | 31 | 54 | 94 | 245 | | | | |
| 3.00 x 3.00 | 9.000 | 110 | 191 | 304 | 258 | 222 | 417 | 334 | 290 | 558 | 417 | 369 | 728 | 514 | 457 | 711 | 47 | 82 | 142 | 368 | | | | |
| 3.00 x 4.00 | 12.000 | 146 | 254 | 405 | 344 | 296 | 556 | 445 | 387 | 744 | 556 | 492 | 971 | 685 | 610 | 949 | 62 | 109 | 189 | 491 | | | | |
| 3.00 x 5.00 | 15.000 | 183 | 318 | 507 | 431 | 370 | 695 | 557 | 484 | 930 | 695 | 615 | 1214 | 857 | 762 | 1186 | 78 | 137 | 237 | 614 | | | | |
| 4.00 x 1.50 | 6.000 | 73 | 127 | 202 | 172 | 148 | 278 | 222 | 193 | 372 | 278 | 246 | 485 | 342 | 305 | 474 | 31 | 54 | 94 | 245 | | | | |
| 4.00 x 2.00 | 8.000 | 97 | 169 | 270 | 229 | 197 | 371 | 297 | 258 | 496 | 371 | 328 | 647 | 457 | 406 | 632 | 41 | 73 | 126 | 327 | | | | |
| 4.00 x 3.00 | 12.000 | 146 | 254 | 405 | 344 | 296 | 556 | 445 | 387 | 744 | 556 | 492 | 971 | 685 | 610 | 949 | 62 | 109 | 189 | 491 | | | | |
| 4.00 x 4.00 | 16.000 | 195 | 339 | 540 | 459 | 395 | 742 | 594 | 516 | 992 | 742 | 656 | 1295 | 914 | 813 | 1265 | 83 | 146 | 253 | 655 | | | | |
| 4.00 x 5.00 | 20.000 | 244 | 424 | 676 | 574 | 494 | 927 | 743 | 646 | 1240 | 927 | 820 | 1619 | 1142 | 1017 | 1581 | 104 | 182 | 316 | 819 | | | | |
| 6.00 x 4.00 | 24.000 | 293 | 509 | 811 | 689 | 593 | 1113 | 891 | 775 | 1488 | 1113 | 984 | 1943 | 1371 | 1220 | 1898 | 125 | 219 | 379 | 983 | | | | |

General Formula

Panduit Wiring Duct wire fills are calculated using the following general formula:

$$50\% \text{ Wire fill} = 50\% \text{ of } \left(\frac{\text{Usable Duct Area}}{\text{Wire Area}} \right)$$

Why use a 50% Wire Fill?

As specified in NFPA79-2012 section 13.5.2, Percentage Fills of Raceways (Ducts), a 50% wire fill is given as the maximum wire fill capacity in all Panduit Wiring Ducts. This helps ensure general safe wiring practices are followed. In actual practice, a 50% wire fill is the maximum amount of wiring the duct can hold given the additional airspace created between cables by non-uniform cable shapes, cable interlacing, and cable packing factors.

Wire Area

The wire area formula is converted to allow calculation using the cable diameter:

$$\begin{aligned} A_{\text{WIRE}} &= \pi r^2 \\ A_{\text{WIRE}} &= (\pi/4) \times D^2 \\ A_{\text{WIRE}} &= 0.785 \times D^2 \end{aligned}$$

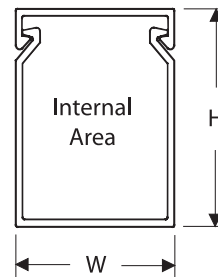
Formula Derivation

Inserting the elements from above into the general formula results in the following:

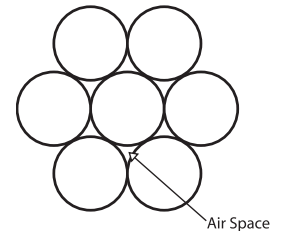
$$50\% \text{ Wire fill} = 0.50 \left(\frac{(W \times H) \times 0.90}{0.785 \times D^2} \right)$$

Note: When calculating wire fill capacity using the above formula, variables W, H, and D must be expressed in same units (i.e. mm or inches).

Calculation of Internal Area



Air Space Allotment



What is the Usable Duct Area?

The usable area we define as the calculation of internal area that can be occupied by wires or cables. Accounting for thickness of material, 90% of the nominal area (WxH) is used in the formula.

Simplifying this formula results in the formula used for wire fill calculation:

$$50\% \text{ Wire fill} = \left(\frac{W \times H}{1.75 \times D^2} \right)$$

Part Numbering System for Panduct® Wiring Duct

| | | | | | | | |
|--|----------------------|----------|-----------------------|---|---|---------------|--|
| G | 2 | X | 2 | LG | — | 6 | -A |
| Type | Nominal Width | | Nominal Height | Color | | Length | Options |
| G = Wide Slot F = Narrow Slot FL = Flexible Duct FS = Solid Wall H = Hinged Cover Wide Slot HN = Hinged Cover, Narrow Slot HS = Hinged Cover, Solid Wall D = Round Hole NNC = Halogen Free, Metric NE = Halogen Free MC = Narrow Slot, Metric TNC = Low Smoke, Halogen Free | In. or mm | | In. or mm | LG = Light Gray WH = White BL = Black IB = Intrinsic Blue IG = International Gray | | 6 ft. or 2m | -A = Adhesive backed NM = No mounting holes = Leave blank for no options |

Part Numbering System for Panduct® PanelMax™ DIN Rail Wiring Duct

| | | | |
|---------------------|---|-------------------------------|---------------|
| DRD | 22 | LG | 6 |
| Type | Size | Color | Length |
| DRD = DIN Rail Duct | Capability Height 22 = 2" Height 33 = 3" Height 44 = 4" Height | LG = Light Gray WH = White | 6 ft. |

Part Numbering System for Panduct® PanelMax™ Corner Wiring Duct

| | | | |
|--------------------------|--|-------------------------------|---------------|
| CWD | 2 | LG | 6 |
| Type | Size | Color | Length |
| CWD = Corner Wiring Duct | Capability Height 2 = 2" Height 3 = 3" Height 4 = 4" Height | LG = Light Gray WH = White | 6 ft. |

Part Numbering System for Panduct® Wiring Duct Covers

| | | | |
|--|--------------|---|---------------|
| C | 2 | LG | 6 |
| Type | Width | Color | Length |
| C = Cover HC = Hinged Cover NC = Halogen Free TNC = Low Smoke, Halogen Free DRDC = DIN Rail Duct | In. or mm | LG = Light Gray WH = White BL = Black IB = Intrinsic Blue IG = International Gray | 6 ft. or 2m |

Panduct® PanelMax™ Shielded Wiring Duct

Shielded wiring duct is a Type G style duct with bridges wrapped with an aluminum foil shield. Sold in 6 ft. lengths, available in three (3) sizes and uses Type C covers.

| Part Number | Size (W x H) |
|-------------|--------------|
| G2X2LG6EMI | 2" x 2" |
| G2X3LG6EMI | 2" x 3" |
| G2X4LG6EMI | 2" x 4" |

Panduct® PanelMax™ Noise Shield

Noise shield is zinc-plated steel and black powder coated except at bonding locations. Each kit contains two (2) 3 ft. sections and four (4) bonding clips.*

| Part Number | Size (H) |
|-------------|----------|
| SD2EMI | 2" |
| SD3EMI | 3" |
| SD4EMI | 4" |

*Additional bonding clips available – SDCLIP (2 per package).

Wiring Duct Material Properties

Rigid Polyvinyl Chloride (PVC)

A general purpose lead-free material for indoor applications. It has a UL 94 flame class of V-0 with a UL recognized continuous-use temperature up to 50°C (122°F). Used in the manufacture of the following types of Panduit wiring duct and covers: G, F, D, FS, MC, H, HN, HS, CWD, DRD.

Modified Polyphenylene Oxide (mPPO) – Halogen Free

A special purpose material for use in halogen-free or high-temperature applications. It has a UL 94 flame class of V-0 with a UL recognized continuous-use temperature up to 95°C (203°F) and is 20% lighter than PVC. Used in the manufacture of the following types of Panduit wiring duct and covers: NE and NNC.

Polyphenylene Ether + High Impact Polystyrene (PPE+HIPS)

A special purpose material for use in low-smoke, halogen-free, and high-temperature applications. It has a UL 94 flame class of V-0 with a UL recognized continuous-use temperature up to 105°C (221°F). Meets the regulatory requirements of the mass transit industry and other applications where fire and public safety are critical; such as in trains, buses, offshore oil and gas platforms, and other similar environments. Used in the manufacture of Type TNC wiring duct and covers.

Polypropylene (PP)

A flexible material with a UL 94 flame class of V-2 with a UL recognized continuous-use temperature up to 65°C (149°F). Used in the manufacture of Type FL flexible wiring duct.

Recommended Precaution when using Type NE, NS, NNC, and TNC Wiring Duct

Cleaning solvents and cutting fluids that contain any of the following chemical agents should not come into contact with these types of wiring duct or covers. These chemicals are the most commonly known to cause stress cracking.

- Hydrocarbons
- Phenols
- Ketones
- Amines
- Ethers
- Organic, inorganic, and oxidizing acids
- Petrol

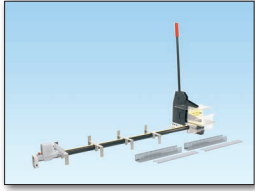
Refer to www.panduit.com for more information on chemical resistance.

Unmatched Expertise

Panduit continually invests in resources to solve your greatest business and technology challenges. Our network of sales, technical support, distribution, and manufacturing teams are readily accessible to help you with your project needs.

Complete Your Installation with Accessories and Installation Tools

Wire Duct Cutting Tools



PBDCT –
Bench Mount Duct Cutting Tool



DCT –
Hand-Held Duct Cutting Tool



DNT-100 –
Duct Notching Tool



DFCT –
Duct Finger Cutting Tool

Wire Duct Installation Tools

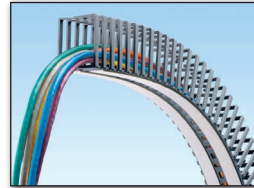


TNR –
Nylon Rivet Installation Tool



Nylon Rivets:
NR1-C – 100 pcs.
NR1-M – 1000 pcs.

Accessories



Type FL –
Flexible Wiring Duct; available
in lengths of 500mm and in
three sizes: 12mm x 12mm,
25mm x 25mm, 50mm x 50mm

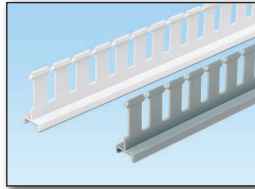


Adhesive Tape –
Available in roll form or
factory applied on select sizes

Divider Walls

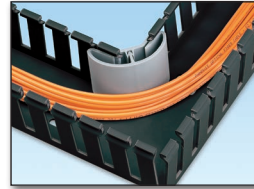


PVC Divider Walls:
Light Gray White
D2H6 – 2" (H) **D2HWH6 – 2"**
D3H6 – 3" **D3HWH6 – 3"**
D4H6 – 4" **D4HWH6 – 4"**

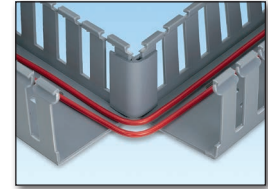


PVC Slotted Divider Walls:
Light Gray White
SD2H6 – 2" (H) **SD2HWH6 – 2"**
SD3H6 – 3" **SD3HWH6 – 3"**
SD4H6 – 4" **SD4HWH6 – 4"**

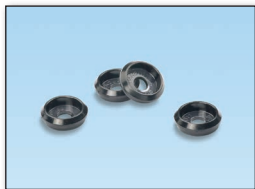
Corner Strips



CSC1LG6 –
6 ft. length strip with
bend radius control



CS1LG6 –
6 ft. length strip

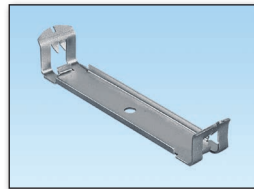


DB-C –
Divider Wall Base for
mounting all types of
divider walls; halogen free



Halogen-Free Divider Walls:
NNC50DWH2 – 50mm (H)
NNC75DWH2 – 75mm
Low Smoke, Halogen Free:
TNC50D2 – 50mm
TNC75D2 – 75mm

Snap-Clip Mounting Brackets



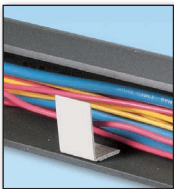
For Wiring Duct Types G, F, FS, and D:

- S1F-C – 1" duct width
- S1.5F-C – 1.5" duct width
- S2F-C – 2" duct width
- S3F-C – 3" duct width
- S4F-C – 4" duct width

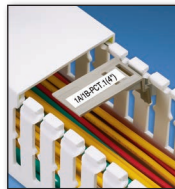
For Wiring Duct Type NE:

- SNS.5-C – 0.5" duct width
- SNS.75-C – 0.75" duct width
- SNS1-C – 1" duct width
- SNS1.5-C – 1.5" duct width
- SNS2-C – 2" duct width
- SNS3-C – 3" duct width

Wire Retainers



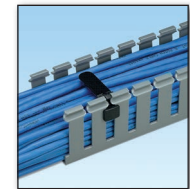
For Type FS and D Wiring Duct:
WRS-A-C10 – for 1" – 2" duct width









For Type F and HN Wiring Duct:
FWR-C – for 1.5" – 4" duct width
For Type MC Wiring Duct:
FMWR-C – for 1.5" – 4" duct width



For Type G and H Wiring
WR2-C – for 2" duct width
WR3-C – for 3" duct width
WR4-C – for 4" duct width
WR5-C – for 5" duct width
WR2H-C – for 2" hinged duct



Panduit Wiring Duct Approvals and Compliances

| Agency Mark | Agency | Requirement | Classification/Performance | Wiring Duct Types/Products |
|---|---|---|---|---|
|  | Underwriters Laboratories, Inc. File No. E147128 | UL 1565 | Material Flame Class V-0 Continuous-use temperature up to 50°C (122°F) | All wiring duct types and covers |
|  | | UL 1565 CSA C22.2 No. 18.5-03 | Material Flame Class V-0 Continuous-use temperature up to 50°C (122°F) | Type H, HS, HN, and DRD |
|  | Underwriters Laboratories, Inc. | UL 508 section 15 | An insulating barrier material shall comply with the minimum material properties indicated in Table 15.1 | PVC divider walls |
| | | UL 508 sections 34 and 181 | Qualifies as a metal barrier with required thickness as indicated in Table 6.1 | SD*EMI metal barrier |
|  | Canadian Standards Association File No. 016446 | CSA C22.2 No. 18.5-02 | Material Flame Class V-0 Continuous-use temperature up to 50°C (122°F) | All wiring duct types and covers (except H, HS, and HN) |
|  | Conformity European | Low Voltage Directive 2006/95/EC | <ul style="list-style-type: none"> CDS (cable ducting system for impact 2 J) Minimum storage, transport, installation, and application temperature: -5°C (23°F) Maximum application temperature: 60°C (140°F) Non-flame propagating Without electrical continuity Cover removable without a tool | H, HS, G, F, D, MC, FS, NNC, NE, DRD, and TNC |
| | | EN 50085-1 EN 50085-2-3 | | |
| | DIN German Institute for Standardization | DIN 43659 | <ul style="list-style-type: none"> Specifies dimensions for slotted trunkings used in electrical switch-gear assemblies and that conform to DIN VDE 060 Part 506 Channel mounting hole pattern, slot dimensions, pitch, and location Distance from first to last like-size mounting hole Minimum overall product length | MC, NNC, and TNC |
| | | DIN 5510-2 DIN 54837 | Burning Class: S4 Smoke Class: SR2 Dripping Class: ST2 | TNC |
| | AFNOR French Association of Normalization | NF F 16-101 NF F 16-102 | Type NNC Wiring Duct Classification = F3/I4 Type TNC Wiring Duct Classification = F1/I4 | NNC and TNC |
| | UNIFER Italian Railway Standards | EN ISO 11925-2 | Pass 30-second flame application | TNC |
| | FRA – Federal Railroad Administration | 49 CFR Part 238 | Surface Flammability: < 35 Smoke Density D _s (1.5) < 100 D _s (4.0) < 200 | TNC |
| | NFPA – National Fire Protection Association | NFPA130 | | |
| | National Fire Protection Agency | NFPA 79-2012, Section 13.3.1 IEC 60332-1 | Non-metallic duct shall be permitted (inside enclosures) only when they are made with a flame-retardant material; flame-retardant material is defined in the standard by the IEC 60332-1 test method | All wiring duct types and covers (except FL) |
| | | NFPA 79-2012, Section 13.5.2 | Panduit publishes a maximum percentage wire fill for common wire types equal to 50% of the interior cross-sectional area of the wiring duct | All wiring duct types and covers |
| | | NFPA 79-2012, section 13.1.6.9 | Panduit bend radius control accessories can be mounted at right angles and T junctions created using wiring duct in order to maintain cable bend radius control | Corner strip with 1" bend radius control |
|  | European Union | European Directive 2002/95/EC | Meets the requirements on the Restriction of Hazardous Substances and is free of the six substances listed in the directive | All wiring duct products |

For more information

Visit us at www.panduit.com

Contact Customer Service by email: cs@panduit.com
or by phone: 800.777.3300

©2015 Panduit Corp.
ALL RIGHTS RESERVED.

WDSG02--SA-ENG

Replaces WDSG01--SA-ENG

6/2015

