



MAXREFDES150#

AN6330; Rev 0; 9/16

Abstract

Industry 4.0, the fourth revolution in manufacturing and process automation, poses a considerable challenge for PLC design engineers who are required to pack more functionality into enclosures that keep getting smaller. Higher I/O (input/output) density and smaller form factors also add to the design challenge in another basic way, a consequence of the inevitable power dissipation. The system must be more power efficient than ever to keep the PLC from overheating, especially in an application where fans and vents are generally not acceptable. Fortunately, new solutions are being developed by companies, such as Maxim Integrated, who are looking to leverage their integration capabilities in the evolving industrial market.

MAXREFDES150# Pocket IO PLC Development Platform

Overview

Industry 4.0, the fourth revolution in manufacturing and process automation, poses a considerable challenge for PLC design engineers who are required to pack more functionality into enclosures that keep getting smaller. Higher I/O (input/output) density and smaller form factors also add to the design challenge in another basic way, a consequence of the inevitable power dissipation. The system must be more power efficient than ever to keep the PLC from overheating, especially in an application where fans and vents are generally not acceptable. Fortunately, new solutions are being developed by companies, such as Maxim Integrated, who are looking to leverage their integration capabilities in the evolving industrial market.



MAXREFDES150# - Pocket IO System

Introduction

Maxim's new Pocket IO™ development platform is a reference design integrating a total of 30 IO's consisting of four analog inputs, one analog output, eight digital inputs, eight digital outputs, two RS485 (Profibus-capable field busses), three encoder motor-control ports, and four IO-Link® masters. Maxim's Pocket IO technology demonstration platform shows how analog integration can enable lower heat dissipation and faster throughput in a footprint that is less than ten cubic inches. Pocket IO connectivity is through USB or its own Wi-Fi® network. Code can be developed to run on the Intel® Edison using the popular and easy to use open-source Arduino® software IDE.

Features

- Two analog input channels ±12V, 24-bit ADC
- Two analog input channels ±24mA, 24-bit ADC
- Analog output channel 0V to +12V, 16-bit DAC
- Eight digital input channels 36V (max) configurable for IEC® 61131-2 input types 1, 2, and 3
- Eight digital output channels; 640mA high-side switches or 640mA push-pull at 24V
- Two RS-485 COM ports; half-duplex up to 42Mbps data rate
- Three DC-motor controllers: 9V to 32V full-bridge DC-motor drivers, up to 2.5A peak motor current (supplied by separate power supply)
- Three incremental encoder interface for RS-422, HTL or TTL
- Four IO-Link master ports with M12 female connectors
- Fully IO-Link version 1.1 compliant (downloadable test report)
- TEConcept IO-Link master stack
- Easy TEConcept control tool (CT) GUI software with IODD file import capability

Application

- Factory and process automation
- Building automation
- Robotic control
- Rapidly creating and prototyping new industrial control systems
- IO-Link sensors and actuators

MAXREFDES150# contents

- Pocket IO: MAXREFDES150MAIN# and MAXREFDES150LED# stacked in plastic case with Intel Edison
- Connector attach board – MAXREFDES150ATTACH#
- 40-pin female-female cable assembly-two off
- USB A to micro-USB B
- AC-to-DC (24VDC, 1A) power supply with adapters for regional outlets



MAXREFDES150# Contents

System Architecture and Block Diagram

Detailed Description of Hardware

Pocket IO is the brand name for MAXREFDES150#. The MAXREFDES150# consists of three different boards. The overall system block diagram is shown in **Figure 1**.

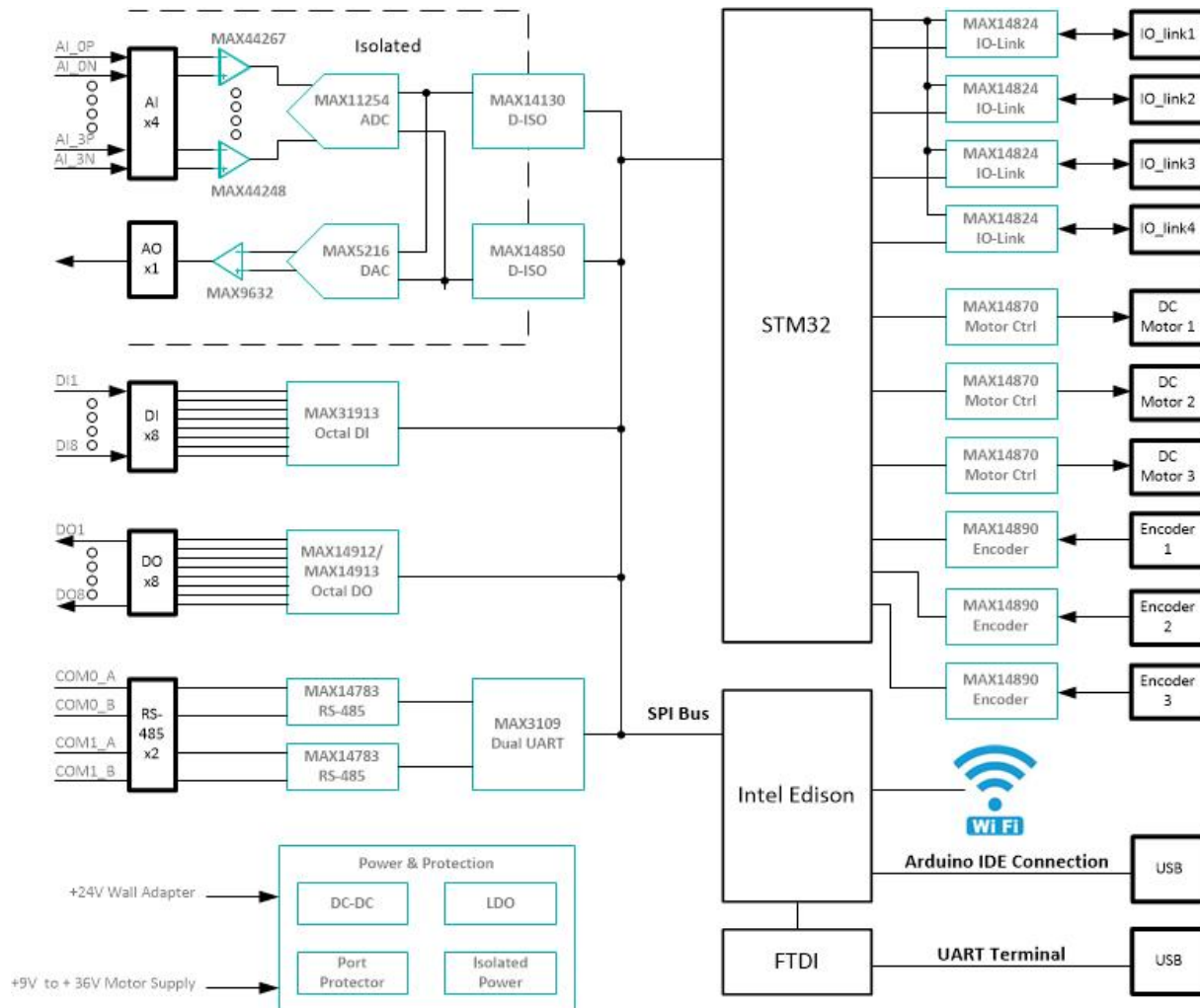


Figure 1. MAXREFDES150# system block diagram.

The ICs for the main functional blocks are within the Pocket IO case (the two boards are MAXREFDES150MAIN# and MAXREFDES150LED#) while the connectors are on a separate board (called MAXREFDES150ATTACH#) which connects to Pocket IO using two 40-pin cable assemblies.

The control program for Pocket IO runs on the Intel Edison board, which is mounted on the MAXREFDES150MAIN# board. Separate STM microcontrollers are used to support the IO-Link masters (TEConcepts stack) and the DC-motor drivers.

Power Supplies

A single 24V, 1A supply is used to power the Pocket IO and internal DC-DC, and LDO circuits are used to generate the various different voltage levels required by the analog and digital devices.

Note: The maximum load this adapter can supply is 1A, which limits how many of the digital outputs are switching loads simultaneously since each of the eight outputs can handle loads of up to 640mA each. The user can use a different 24V supply with 5A (max) capacity. The 24V, 1A supply connects to the block barrel connector, shown on the left in Figure 2.

Pocket IO has three DC-motor controllers, each of which can support +9V to +32V full-bridge DC-motor drivers at up to 2.5A peak motor current. In order to support these higher voltages and currents, a separate user-supplied power supply is required, and connects to Pocket IO through the green three-way terminal. Terminal 1 is used (with Terminal 3) to test the polarity of the external supply (to protect Pocket IO motor drivers from reverse polarity connections). In normal-use mode Terminal 2 is the +9V to +32V connection and Terminal 3 is the ground or 0V connection.

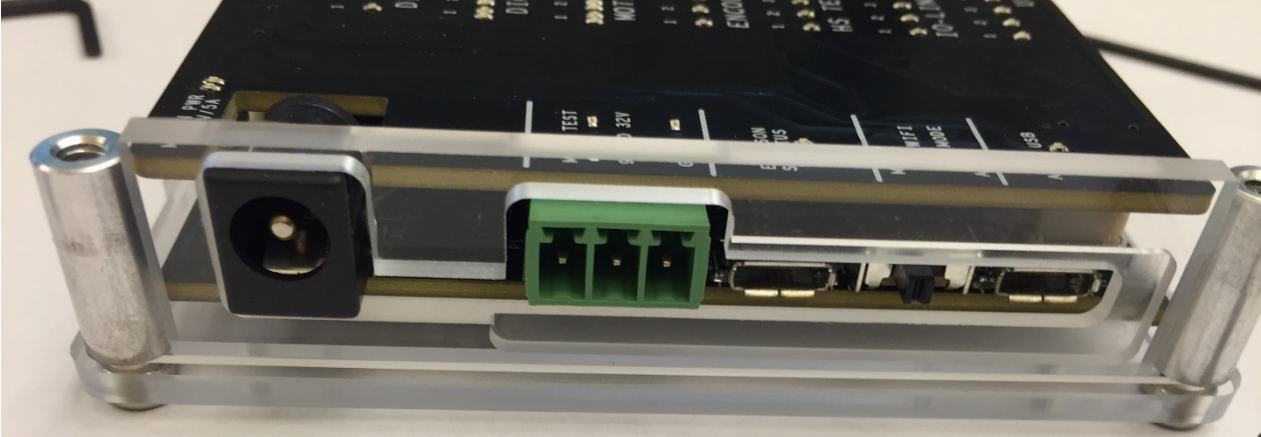


Figure 2. MAXREFDES150# power inputs.

Connections

The main functional blocks are on the two PCBs within the Pocket IO case while the connectors are on a separate board, called MAXREFDES150ATACH# shown in **Figure 3**.

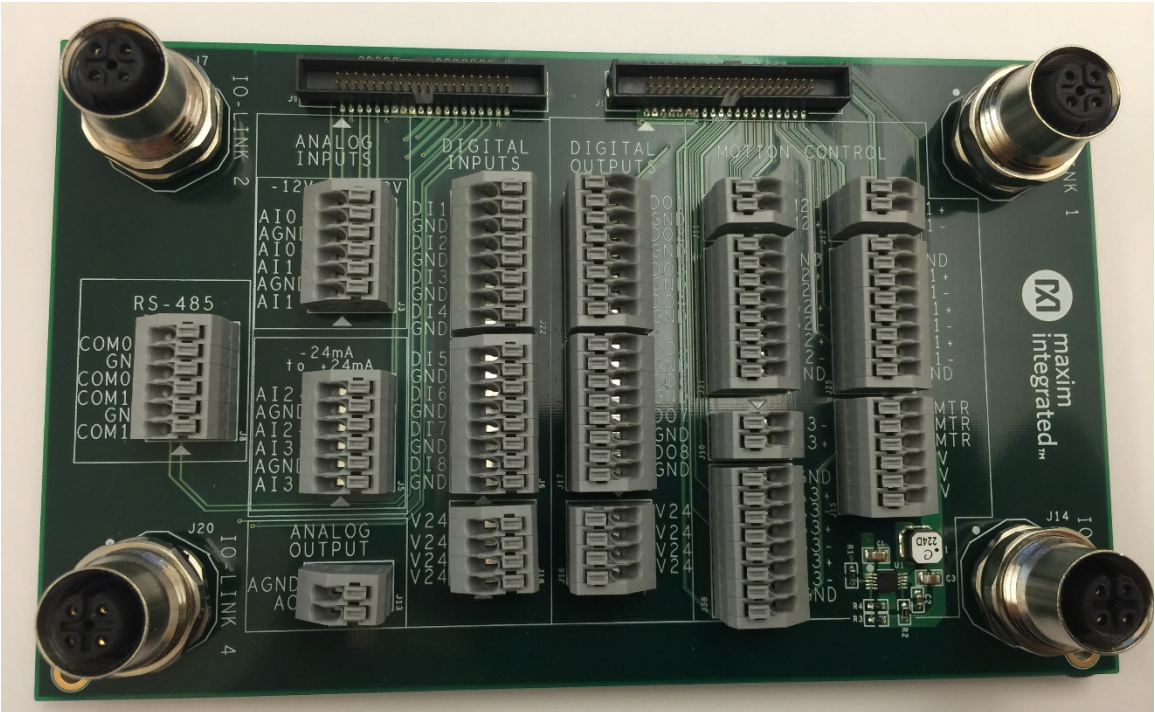


Figure 3. MAXREFDES150ATACH#.

LED Indicators

Figure 4 explains the functions of the LED indicators for MAXREFDES150#.

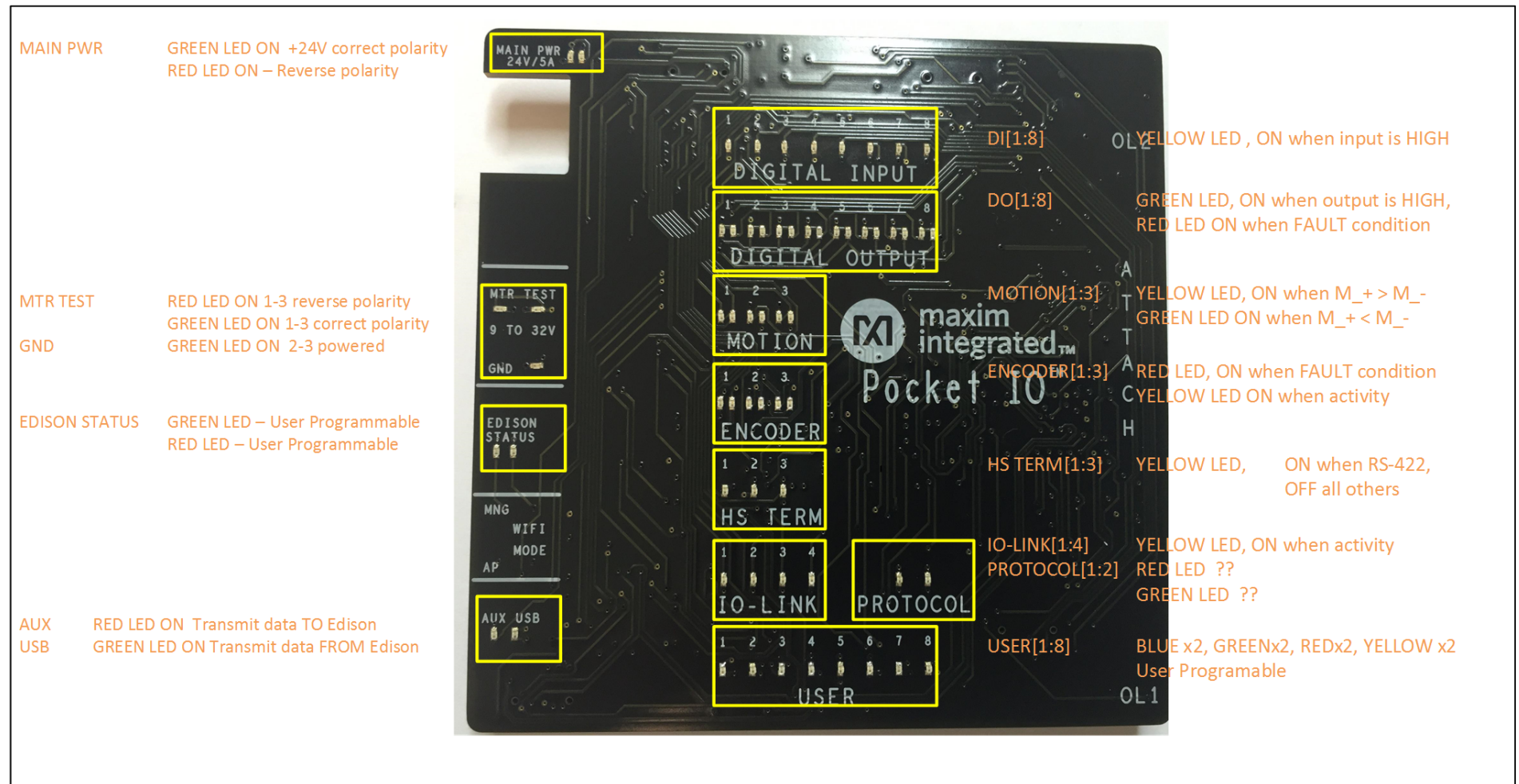


Figure 4. Pocket IO LEDs.

Detailed Description of Software

When building up a quick application, or when prototyping some feature, the quickest and easiest way to program Pocket IO, is through the Arduino application. Though not a full-code development, debugging environment, the Arduino sketch technique has a lot to offer, including:

- A familiar interface, instantly recognizable by many
- A full C/C++ compiler
- Access to many useful features built into the Linux OS resident in the Intel Edison processor
- Access to Pocket IO features through an included library
- Access to library updates as they become available

With so much capability packed into one small enclosure, the interface to manage all this is crucial. Each of Pocket IO's 10 resources has its own API. **Figure 5** shows the software architecture for Pocket IO using Arduino IDE to compile code to run on the onboard Intel Edison CPU.

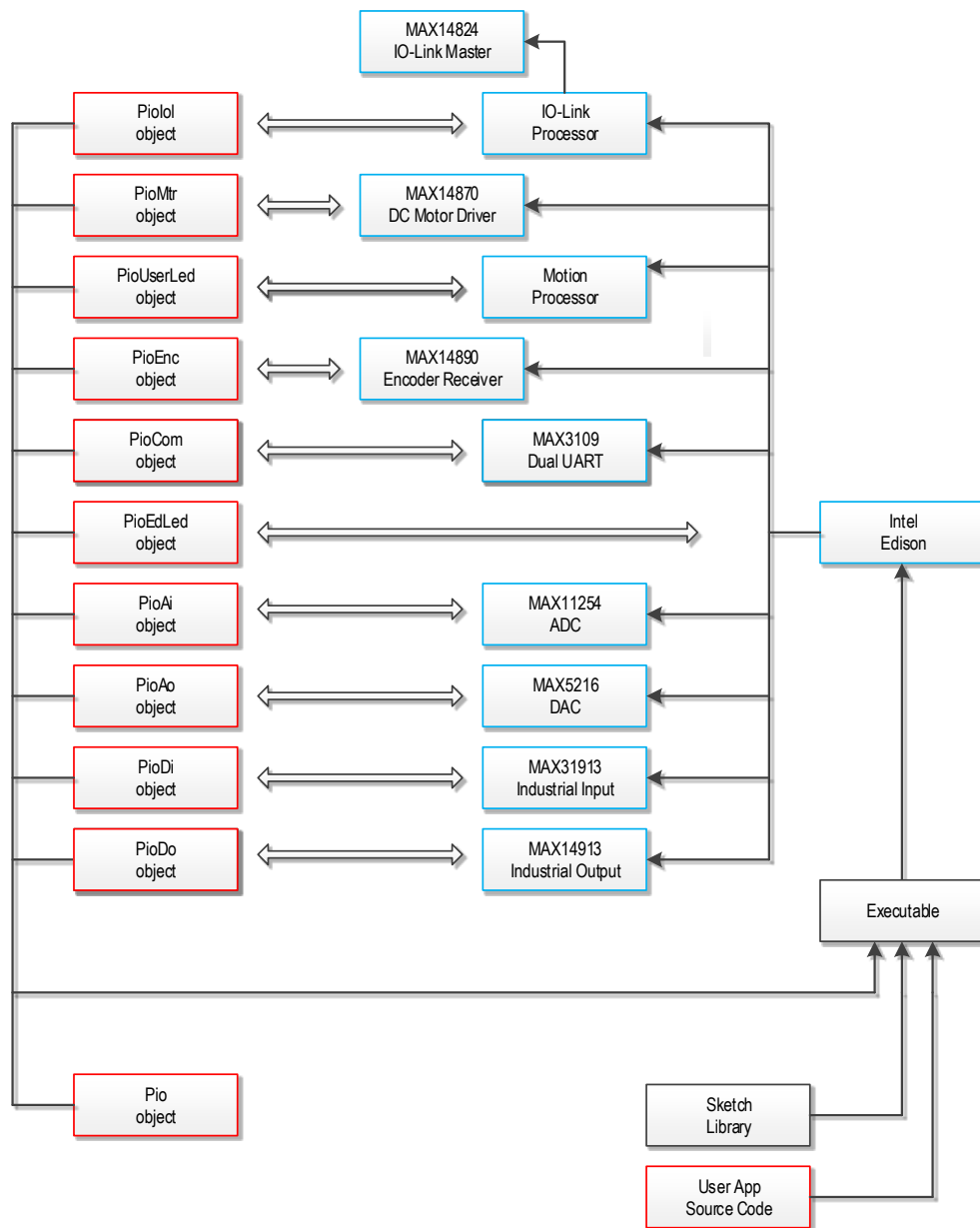


Figure 5. Pocket IO software architecture.

The following sections are details about API and some techniques, many Linux-specific, that enhance the capability of your applications.

Detailed Pocket IO API

These sections, organized alphabetically by Pocket IO feature, details the API available to control Pocket IO through sketch.

Note: For information about how to access software revision codes from Pocket IO, consult Boardinfo.ino in the Pio section of the Examples in sketch.

Analog Input

Pocket IO features two analog voltage inputs and two analog current inputs, all easily accessible through sketch. The voltage channels read anything between -12V and +12V whereas the current channels read anything between -24mA and +24mA. Pocket IO features a MAX11254 24-bit ADC featuring built-in two-point calibration compensation, which the API accommodates.

The API selects from among four channels, as follows:

Channel	API Mnemonic	Attach Board Symbol
First Voltage	A10	A10+/A10-
Second Voltage	A11	A11+/A11-
First Current	A12	A12+/A12-
Second Current	A13	A13+/A13-

Note: The analog input and output circuitry grounds are isolated from the ground of the rest of Pocket IO. The AGND labels on the attach board indicate this separate analog ground. If you accidentally return an analog signal, either from one of the analog inputs or from the analog output, to the more common GND, there can be unexpected results.

Calibration

The following code snippet shows how to perform a two-point calibration. Commonly, the user locks in the calibration, so it does not need to be done again, and calibration rarely needs to be done. Calibration comes in handy when attaching further circuitry to the analog inputs, and accuracy is to be maintained ahead of this extra circuitry. Pocket IO comes factory-calibrated for best accuracy at the connection points of the attach board.

The code snippet uses port A10 as an example, but the code is the same regardless of which port is being calibrated. Each channel keeps its own unique calibration parameters.

```
// Makes Pocket IO analog input API available
//
#include <PioAi.h>

PioAi pioAi; // Instances an analog input interface object

pioAi.init(); // Always needed for analog input

pioAi.initCal(A10); //Commences calibration

/*
 * Put code here to apply +12 volts at the point of calibration
 * if channel A10 or channel A11, or to apply +24mA if channel
 * A12 or A13.
 *
 * Do not proceed until the voltage or current is applied and
 * stable.
 */
```



```

pioAi.setFullCal(AI0); // +12V or +24mA measured

/*
 * Put code here to apply 0 volts or -24mA at the point of
 * calibration.
 *
 * Do not proceed until the voltage or current is applied and
 * stable.
 */

pioAi.setZeroCal(AI0); // 0V or -24mA measured

delay(1000); // needed for ADC to calc corrections

// This method call takes the required corrections for that
// channel and stores it in non-volatile memory
//
pioAi.storeCal(AI0);

```

Reading an Analog Sample

Samples can be read either as a float or as a raw binary code from the ADC. The following code snippet shows how it is done. Because the sample rate is determined by the ADC itself, the user must select from one of the MAX11254 sample times as shown in the following table. Longer sample times result in readings with lower noise. This affects multiple sample reads. For example, with AI_RATE_1_9_SPS, after a first read, the thread calling a read method a second time is blocked for about 526msec.

MAX11254 Sample Rate (sps)	API Mnemonic
1.9	AI_RATE_1_9_SPS
15.6	AI_RATE_15_6_SPS
31.2	AI_RSTE_31_2_SPS
62.5	AI_RATE_62_5_SPS
250	AI_RATE_250_SPS
500	AI_RATE_500_SPS
1000	AI_RATE_1000_SPS

```

// Makes Pocket IO analog input API available
//
#include <PioAi.h> // no init() method

PioAi pioAi; // instances an analog input interface object

pioAi.init(); // always needed for analog input

// Loads a previously stored calibration for that channel,
// usually done once at setup
//
pioAi.restoreCal(AI0);

while (XXX)
{
 // Reads one sample as a raw binary code
 //

```

```

uint32_t code = pioAi.readCode(AI0, AI_RATE_1_9_SPS);

// The returned code is in offset binary, where 0V is
// 2^23, 12V is 2^23+2^23 = 2^24, and -12V is
// 2^23 - 2^23 = 0
//
// In the case of current, the calibration is done is
// firmware, so the returned code is not relevant
//
float toVolts = (float) (code - 8388608) * 12.0 / 8388608;

// Or you can do it easier this way, for reading current,
// this is the best way.
//
float volts = pioAi.readFloat(AI0, AI_RATE_1_9_SPS);
}

```

Analog Output

Pocket IO provides one analog output, capable of any output voltage between 0V and 12V. Since there is only one analog output channel, there is no need to select channels. The API consists of only one method call, and no `init()` is needed for analog out.

The call to the method is a raw 16-bit code to the DAC. To drive a specific voltage, it must first be converted to a 16-bit equivalent for the DAC, as shown in the code snippet below.

```

// Makes Pocket IO analog output API available
//
#include <PioAo.h>

PioAo pioAo; // instances an analog output interface object

const float DAC_CONV = 5443.106; // codes per volt
pioAo.init(); // always needed for analog output

float voltageOut = 1.250; // desired output voltage

uint16_t codeDAC = (uint16_t) (voltageOut * DAC_CONV);

// Returns the argument to the method, as a uint16_t, which
// is usually ignored
//
uint16_t intCodeDAC = pioAo.writeCode(codeDAC);

// Could also do it this way
//
uint16_t intCodeDAC = pioAo.writeCode(voltageOut * DAC_CONV);

```

Communications (RS-485)

Pocket IO provides serial communication through two RS-485 ports. Each port is half-duplex, and is preset for 115.2KBAUD at 8N2 (eight data bits, no parity, two stop bits).

Select from among the 2 channels as follows:

Channel	API Mnemonic	Attach Board Symbol
0	COM0	COM0A/COM0B
1	COM1	COM1A/COM1B

The API permits independent reading and writing for each channel. For any given channel, writes supersede reads. No harm occurs if multiple RS-485 transceivers drive a bus at the same time though this means any received data would be corrupted. Use protocol to ensure only one transceiver drives the bus at a time.

This code snippet shows how to write a set of bytes. Though the example sends characters, any binary data can be sent.

```
// Makes Pocket IO COMMS API available
//
#include <PioCom.h>

PioCom pioCom; // instances a COMMS interface object

pioCom.init(); // always needed for COMMS

uint8_t bytes = {'H', 'e', 'l', 'l', 'o', ',', ',',
                'W', 'o', 'r', 'l', 'd', '!', '\0'};

// First param must be either COM0 or COM1
// Second param is a pointer to an array of bytes
// Third param is the number of bytes to transfer
//
// Maximum of 128 bytes can be sent. If a previous write
// has not yet completed, then the number of bytes that
// can be written is 128 - (number of bytes left to send)
//
// If you send more than 128 bytes, the transmitted data
// will be corrupted.
//
PioCom.write (COM0, bytes, sizeof(bytes));
```

Reading data from an RS-485 port is similar to writing, with the added complication that you do not necessarily know how many bytes have been received. The following code snippet shows how to read data.

```
// Makes Pocket IO COMMS API available
//
#include <PioCom.h>

PioCom pioCom; // instances a COMMS interface object

pioCom.init(); // always needed for COMMS

// Needed once before first read
//
pioCom.clearInterrupts(COM0);
```

```

uint8_t receiveBuffer [100];
uint8_t receiveCount;

// First param must be either COM0 or COM1
// Second param is an array to receive data
// Third param is the size of the buffer
// Fourth param will get the number of bytes actually read
//
// The receive buffer will be filled with a number of bytes
// received since a previous read method call. If this is less
// than the size of the buffer, then the buffer is
// partially filled. Otherwise, the buffer is filled and
// a subsequent read can obtain further read data.
//
// Note that data will be corrupted if more than 128 bytes
// have been received since a previous read method call.
//
// If there is no data, the fourth param will be set to zero
//
pioCom.read(COM0, receiveBuffer,
  sizeof(receiveBuffer), &receiveCount);

// Do you want to test if there is pending data to be
// received? This method call returns the number of
// bytes waiting to be read
//
// Useful for conditional mutex
//
uint8_t howManyBytes = pioCom.readRxFifoLevel(COM0);

```

Digital Input

Pocket IO has eight individual IEC-compliant industrial digital inputs. These inputs connect to binary sensors, such as limit switches, proximity sensors, distance sensors, and user switches. These inputs can be read individually, or as a group, through sketch.

Eight LEDs on the display panel indicate the state of each of these digital inputs. The LEDs are extinguished if driven low or left open, and illuminate when the corresponding input is driven logic high. The following table connects the individual inputs to the values returned through the API

Channel	Bit Mask	API Mnemonic	Attach Board Symbol
1	0x01	DI1	DI1
2	0x02	DI2	DI2
3	0x04	DI3	DI3
4	0x08	DI4	DI4
5	0x10	DI5	DI5
6	0x20	DI6	DI6
7	0x40	DI7	DI7
8	0x80	DI8	DI8

Additionally, the user has access to the debounce feature of the MAX31913 industrial digital input device. This feature reduces chattering of particularly noisy digital inputs. This debounce is global, applying to all digital inputs simultaneously used by Pocket IO. The following code snippet shows how to access these inputs as well as how to manage debounce.

```
// Makes Pocket IO digital input API available
//
#include <PioDi.h>

PioDi pioDi; // Instances a DI interface object

pioDi.init(); // always needed for DI

// Gets all 8 inputs at once, correspondence between
// bits and inputs given in the table above
//
uint8_t allDigitalInputs = pioDi.readInput();

// Overloaded method also reads individual digital input
// channels. Returns '0' or '1'
//
// In this case, checks the state of channel 7 only
//
uint8_t specificDigitalInput = pioDi.readInput(DI7);

// This is how to set the debounce. Set as follows:
// 0x00 - no debounce
// 0x01 - 25usec of debounce
// 0x02 - 750usec of debounce
// 0x03 through 0xff - 3msec of debounce
//
// A possibly corrected value is returned, for example if you
// try to set 0x10, 0x03 will be returned
//
uint8_t realDebounce = pioDi.writeDebounce(0x02);

// The currently operational debounce setting can be checked
//
uint8_t whichDeboucne = pioDi.readDebounce();
```

Digital Output

Pocket IO supports eight industrial digital outputs, each capable of driving 24V at greater than 640mA. The API supports many of the features of the MAX14913 or MAX14912 digital output driver IC, including output modes and fault detection.

Each digital output channel can be in one of two modes. High-side mode, as its name implies, only drives a channel high (nominal 24V). Many existing actuators and indicators work best in high-side mode. To have faster output driver switching, each output channel can also be configured to push-pull mode. Since both a high and a low are actively driven, there is no longer a natural decay of the wiring slowing down the transitions from high to low. The following table shows how to specify these through the API.

Mode	API Mnemonic
High-Side	HS_MODE
Push-Pull	PP_MODE

Each individual digital output can be driven high or low. The Pocket IO front panel allows easy confirmation of the output state, illuminating a green LED for each output being driven high. A matching red LED indicates that a fault has occurred on that output. This most commonly happens when accidentally tying two digital outputs together when they drive conflicting logic levels.

The following table correlates the individual outputs to symbols used by the API

Channel	Bit Mask	API Mnemonic	Attach Board Symbol
1	0x01	DO1	DO1
2	0x02	DO2	DO2
3	0x04	DO3	DO3
4	0x08	DO4	DO4
5	0x10	DO5	DO5
6	0x20	DO6	DO6
7	0x40	DO7	DO7
8	0x80	DO8	DO8

The following code snippets show how to command the digital outputs and manage the mode settings of Pocket IO.

```
// Makes Pocket IO digital output API available
//
#include <PioDo.h>

PioDo pioDo; // instances a DO interface object

pioDo.init(); // always needed for digital output

// Commonly, set the output mode once before
// driving outputs
//
// first param:
// - 0x00 means set all to high-side mode
// - 0x01 - 0xff means set all to push-pull mode
//
pioDo.setModeAll(PP_MODE);

// can also set the mode of individual outputs
//
// here, half of the outputs are set to high-side
//
for (int i = DO5; i <= DO8; i++)
{
    pioDo.setMode(i, HS_MODE);
}

// The mode can be confirmed through this method call
//
uint8_t checkMode = pioDo.readMode(DO4);
```

```

If (checkMode)
{
  // code here for push-pull
} else {
  // code here for high-side
}

```

The Pocket IO display panel indicates fault conditions on digital outputs by illuminating a red LED. This fault condition can also be detected through the API. There is a lot more to faults than can be described here, so for more details about fault conditions, refer to the MAX14912/MAX14913 data sheet.

```

// Is there a fault condition on digital output channel 4?
//
// The second argument indicates whether to clear faults or
// not. True causes faults to be cleared.
//
if (pioDo.readFault(DO4, false))
{
  // we have a fault on DO4
}

// grab all the fault conditions at once
//
If (pioDo.readFaultAll(true) & 0x0f)
{
  // we have a fault on one or more of
  // DO1 through DO4
}

```

Edison LED

Some Pocket IO resources are not directly related to industrial inputs and outputs. One of these resources is the two LED at the left of the display panel, labelled "EDISON STATUS." One red and one green LED are purely under the user's control. The LEDs can be used to indicate progress, status, or activity.

The following code snippet shows how to access the LEDs.

```

// Make Pocket IO Edison LED API available
//
#include <PioEdLed.h>

PioEdLed pioEd; // Instances an Edison LED object

pioEd.init(); // Always needed for Edison LED

while (true)
{
  pioEd.writeLed(GREEN, 0x01); // illuminate
  delay(500);
  pioEd.writeLed(RED, 0x01);
}

```

```

delay(500);
pioEd.writeLed(GREEN, 0x00); // extinguish
delay(500);
pioEd.writeLed(RED, 0x00);
}

```

Encoders

Pocket IO has the capability to manage up to three motion-control channels. For many motion-control applications, controlling a motor is enough. For more precise scenarios, feedback is obtained, often from incremental encoders. This section discusses the three incremental encoder interfaces built into Pocket IO.

Incremental encoders communicate position information through two (most common), three (somewhat common) or four (less common) signals. Two-signal encoders are called A and B. Each edge communicates some fraction of a revolution. For example, when using a 4,000 pulses-per-revolution encoder, if you count only the rising edges of the A signal, you can see 1,000 such edges per revolution of the encoder shaft. If you count all edges of both the A and B signals, you can see 4,000 such edges per revolution of the encoder shaft. The timing of the A and the B signals is such that the direction can also be unambiguously determined. The Pocket IO incremental encoder interface uses the A and the B signals to maintain a position count based on the rising edges of the A signal.

A third signal, if it exists, is labelled the Z signal. Sometimes called an index pulse, this optional signal indicates the zero-degree point of the encoder shaft. Pocket IO currently ignores the Z signal. If a fourth signal exists, it is usually labelled the Y signal, and is used to indicate a fault condition in the encoder. Pocket IO has no means to connect to a Y signal.

Incremental encoders have been around for many decades now. Because of this, these encoders are available in a variety of signaling formats, and the MAX14890E encoder used in pocket IO is designed to handle this multiplicity.

Each signal has a "+" connection point and a "-" connection point. For example, the first encoder A signal connects through signals A1+ and A1-. How these are connected to depends on whether the signal format is single-ended or differential. For example, to connect a TTL A encoder signal to Pocket IO encoder channel 1, tie the signal to A1+, and tie the return to A1-. For differential signaling, tie the encoder A+ signal to A1+ and the encode A- signal to A1-. Because of the large common mode tolerance range of the MAX14890E used in Pocket IO, differential encoders usually function well even with no grounds tied between the encoder and Pocket IO.

Several front-panel LED indicators speak to the encoder interface. The yellow LED in the ENCODER section indicates encoder activity whereas the corresponding red LED indicates that an encoder channel has experienced a fault situation. Additionally, the yellow LED in the HS TERM section illuminates when Pocket IO attaches the high-speed RS-422 termination to the corresponding encoder channel.

Each Pocket IO encoder channel has its own signal format selection, communicated to the API by consulting the following table.

Standard	API Mnemonic
Single-ended HTL	SEHTL
Differential HTL	DHTL
RS-422	RS422
TTL	TTL

Select from among the 3 encoder channels as follows:

Channel	API Mnemonic	Attach Board Symbols
1	ENC1	A1+, A1-, B1+, B1-, Z1+, Z1-
2	ENC2	A2+, A2-, B2+, B2-, Z2+, Z2-
3	ENC3	A3+, A3-, B3+, B3-, Z3+, Z3-

This code snippet shows how to set encoder signal formats, and how to obtain encoder information.

```

// Make Pocket IO encoder API available
//
#include <PioEnc.h>

PioEnc pioEnc; // Instances an encoder interface object

pioEnc.init(); // Always needed for encoders

// This sets the encoder 3 signal mode to TTL
//
pioEnc.setMode(ENC3, TTL);

// The encoder interface maintains a position for each
// encoder. The position count is incremented for each
// clockwise pulse obtained by the encoder, and is
// decremented for each counterclockwise pulse of the
// encoder. So, if you read a position, move 500 pulses
// clockwise, then 499 pulses counterclockwise, your new
// position will be one count higher than the previous
// position.
//
// The position is maintained as a 32-bit int, so commonly
// no overflow/underflow maintenance is needed in code.
//
// This is how to obtain the current position of encoder 1
//
int positionNow = pioEnc.getCount(ENC1);

// You can also reset the encoder to zero at any time.
//
pioEnc.initCount(ENC1);

```

Motor Control

A nice feature of Pocket IO is the ability to control up to three brushed DC motors. A separate green-colored connector supplies the motors, permitting the use of motors from 4.5V to 32V. During startup and other high-speed changes, each motor is limited to about two amperes of drive current. Because the motor driver is a full-bridge MAX14870 device, there is no ground connection to the motor, only to its two terminals.

The Pocket IO indicator panel shows the motor driving state for each motor port. A green LED illuminates when driving a motor clockwise, and a yellow LED illuminates when driving a motor counterclockwise. The higher the speed, the brighter the LED.

To adjust motor speed, Pocket IO provides an 8-bit PWM control for each motor independently. Select from among the 3 motor channels referring to the following table:

Channel	API Mnemonic	Attach Board Symbol
1	M1	M1+/M1-
2	M2	M2+/M2-
3	M3	M3+/M3-

The API maintains a concept of rotation direction. When driving clockwise, the "+" connection averages a higher voltage than the "-" connection. When driving counterclockwise, the "+" connection averages a lower voltage than the "-" connection. The following table shows how to describe this.

Direction	API Mnemonic
Clockwise	CLOCKWISE
Counterclockwise	COUNTERCLOCKWISE

“Stopping” a motor can mean two different things. In one case, it can mean actively braking the motor with significant resistance to motion. In the other case, it can mean coasting, where there is little resistance to motion.

In the case of a DC-brushed motor, the difference can be significant. If the motor is part of some internal mechanism where there is no expected movement, then braking is the correct approach. With braking, forcing movement of the motor can prematurely wear out the motor brushes. However, if there can be movement of the motor after stopping, coasting is probably the better approach. The disadvantage of coasting is that the motor does not stop suddenly, so may excuse past where you want to stop.

In some situations, you would like to stop motion solidly, but still permit a user to move a mechanism by hand. A good compromise in this situation is to brake the motor for a short time, and then coast the motor.

The following table summarizes the possible states of motion for the motors.

State of Motion	Enable	Direction	Speed
Running one direction	True	CLOCKWISE	Any
Running other direction	True	COUNTERCLOCKWISE	Any
Braking	True	Any	Zero
Coasting	False	Any	Any

The following code snippet shows how to manage the motors through Pocket IO.

```
// Make Pocket IO motor API available
//
#include <PioMtr.h>

PioMtr pioMtr; // Instances a motor interface object

pioMtr.init(); // always needed for motor interface

// Motor 1 to half speed one direction
//
// The second argument to the writeSpeed method
// is between 0 (no motion) and 255 (full motion)
//
pioMtr.writeEnable(M1, true);
pioMtr.writeDirection(M1, CLOCKWISE);
pioMtr.writeSpeed(M1, 128); // half speed

// Motor is running, want to reverse direction
// and still run at half speed
//
pioMtr.writeDirection(M1, COUNTERCLOCKWISE);

// Compromise stopping technique
//
// First brake and then coast a short
// while later
//
pioMtr.writeSpeed(M1, 0); // brake
```



```

delay(100); // good value for most small motors
pioMtr.writeEnable(M1, false); // now coast

// The various values can be read back
//
if (pioMtr.readEnable(M1))
{
    // do something if M1 is enabled
}
uint8_t myDirection = pioMtr.readDirection(M1);
uint8_t mySpeed = pioMtr.readSpeed(M1);

```

User LED

Some Pocket IO resources are not directly related to industrial inputs and outputs. One of these resources is the eight-user LED toward the bottom of the display panel, labelled "USER." You have two blue, red, yellow, and green LEDs, that can be used to indicate anything (under the user's control).

The following table correlates USER LED with code.

User LED	API Mnemonic
1	LED1
2	LED2
3	LED3
4	LED4
5	LED5
6	LED6
7	LED7
8	LED8

The following code snippet shows how to control the user LED.

```

// Makes Pocket IO user LED API available
//
#include <PioUserLed.h>

PioUserLed pioUser; // Instances a user LED interface object

pioUser.init(); // always needed for user LEDs

// This is how to control the user LED
//
// Illuminated LED if second param != 0
//
pioUser.writeLed(LED5, 1);
delay(1000);
pioUser.writeLed(LED5, 0);

// Can also query the current state of any LED
//
uint8_t stateLED5 = pioUser.readLed(LED5);

```

Quick Start

Required Equipment:

- MAXREFDES150# Case (Pocket IO) with MAXREFDES150ATACH#
- Two 40-pin cable assemblies
- 24V, 1A power supply
- USB cable
- Windows® PC with a USB Port
- Arduino IDE Software

The first step is to connect the Pocket IO and the connector board, and then to install and configure the Arduino-based software tools.

Power Supplies

A single 24V, 1A supply is used to power the Pocket IO and internal DC-DC, and LDO circuits are used to generate the various different voltage levels required by the analog and digital devices.

Note: *The maximum load this adapter can supply is 1A, which limits how many of the digital outputs are switching loads simultaneously since each of the eight outputs can handle loads of up to 640mA each. The user can use a different 24V supply with 5A (max) capacity. The 24V, 1A supply connects to the block barrel connector, shown on the left in Figure 2.*

Connections

The main functional blocks are on the two PCBs within the Pocket IO case while the connectors are on a separate board, called MAXREFDES150ATACH# shown in **Figure 3**, which connects to Pocket IO using two 40-pin cable assemblies as shown in **Figures 6, 7 and 8**.

For testing MAXREFDES150# connect the Pocket IO boards in the plastic case to the MAXREFDES150ATACH# board using the two cable assemblies. Note each cable is the same, but one connector has a plastic 'key' to mate correctly to the male connectors on the MAXREFDES150ATACH# board. Start by connecting to the MAXREFDES150ATACH# board making sure the red line on the cable matches the Pin 1 triangle on J1 and J9 for the MAXREFDES150ATACH# board (**Figure 6**).

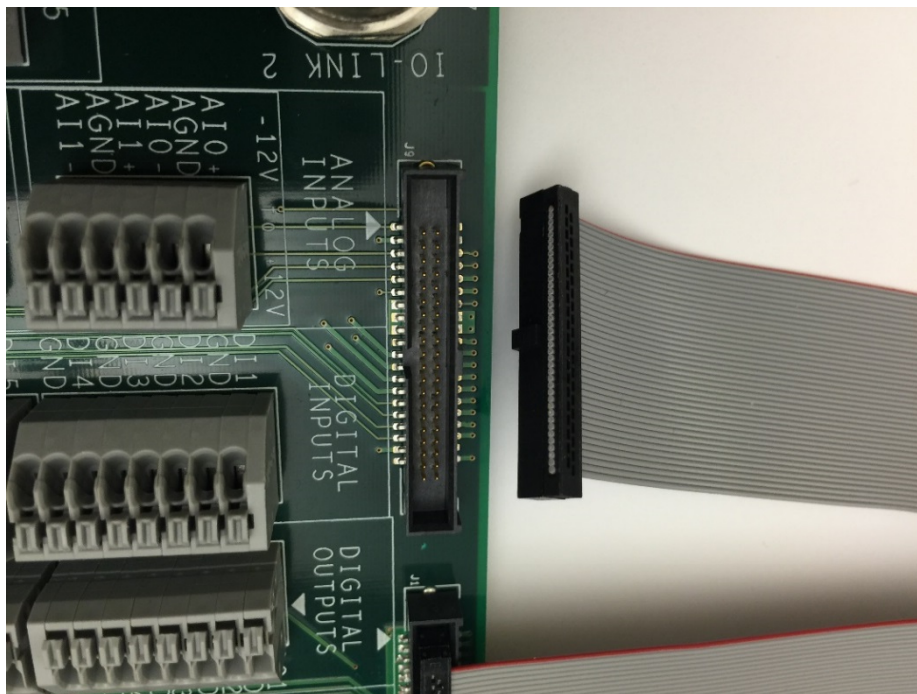


Figure 6. Connecting Cable Assembly to MAXREFDES150ATACH#.

Then connect the two cables to the male connectors at the rear of the Pocket IO plastic case; note how the red line on the cable is on the left hand side (Figure 7).

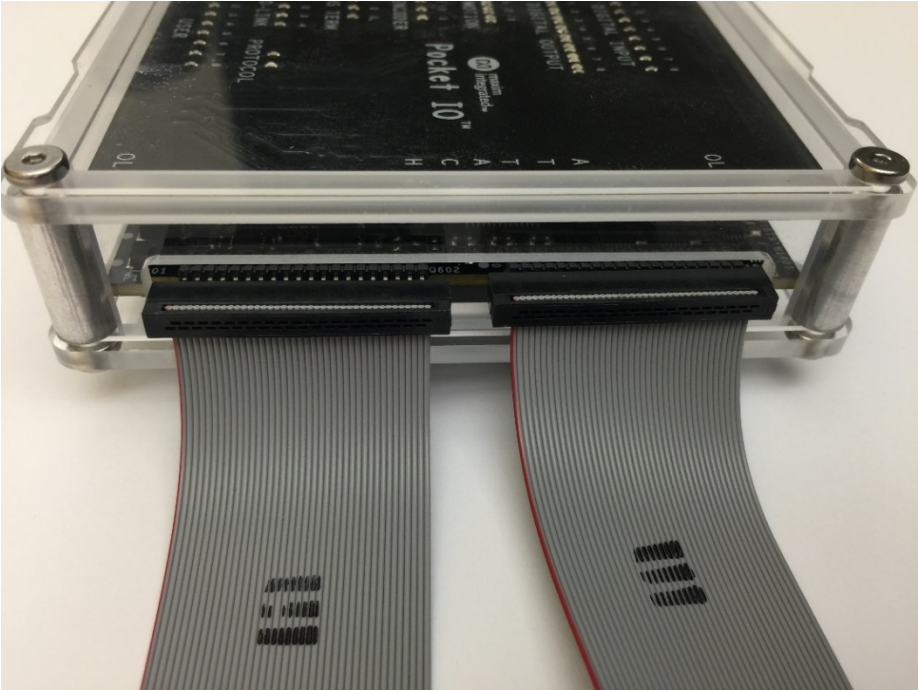


Figure 7. Cable Assembly to Pocket IO.

Make sure you do not cross the two cables (Figure 8).

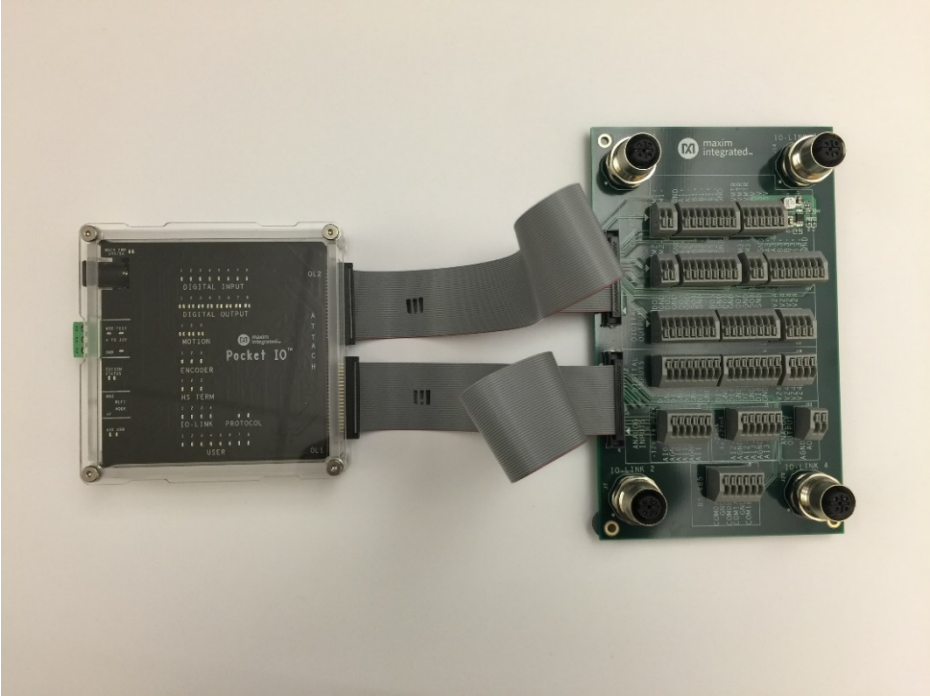


Figure 8. Pocket IO Connected to MAXREFDES150ATACH#.

Finally, take the 24V wall adapter and select the correct fixture for the local power outlet; the kit is supplied with adapters for England, Europe, USA and Australia standards (**Figure 9**).



Figure 9. Pocket IO power supply and adapters.

Connect the 24V supply to the barrel connector on the plastic case (**Figure 10**).



Figure 10. Pocket IO with Power Supply Connected.

Pocket IO is now ready to be powered on and tested. Testing requires a PC loaded with Arduino software for Pocket IO.

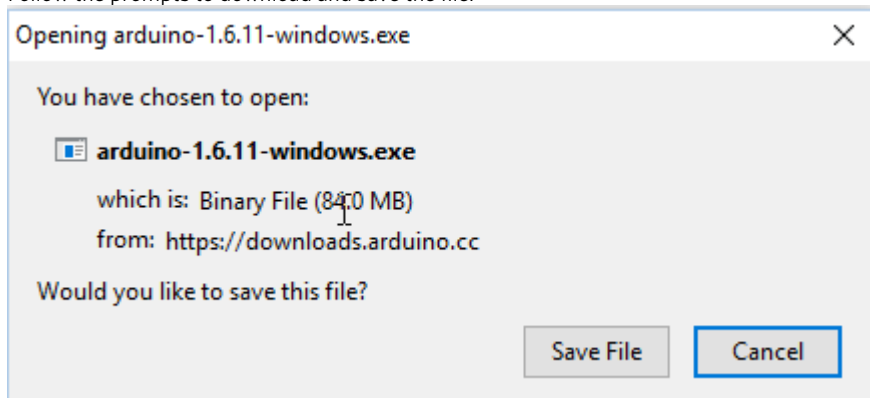
Procedure:

Maxim Pocket IO Arduino Installation Instructions

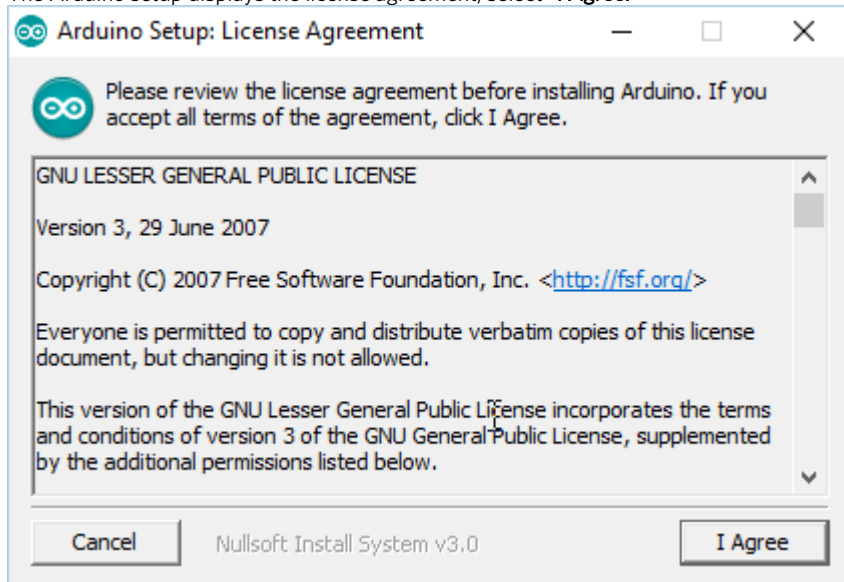
1. Download and install the latest Arduino IDE.
 - a. Go to <https://www.arduino.cc/en/Main/Software>.
 - b. Select the appropriate OS link (Windows, MAC®, Linux®). For this Quick Start we assume the OS is Windows PC.



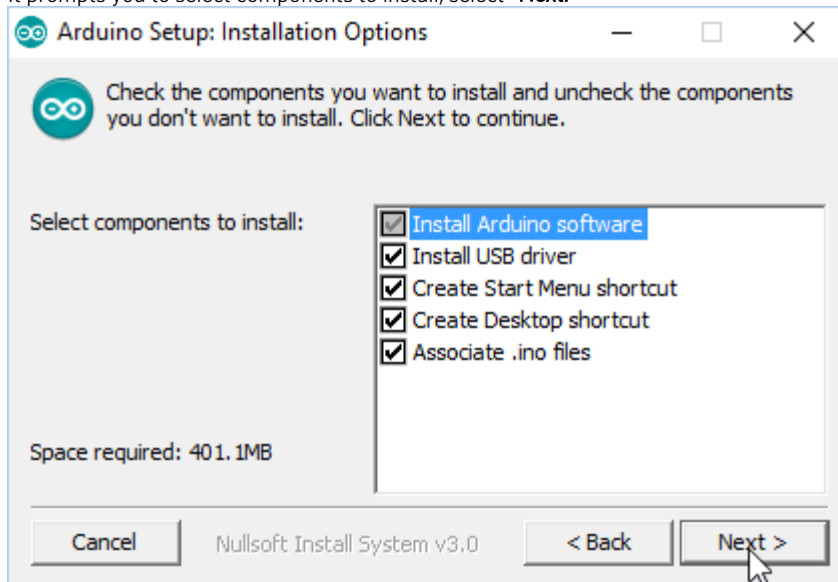
- c. Follow the prompts to download and save the file.



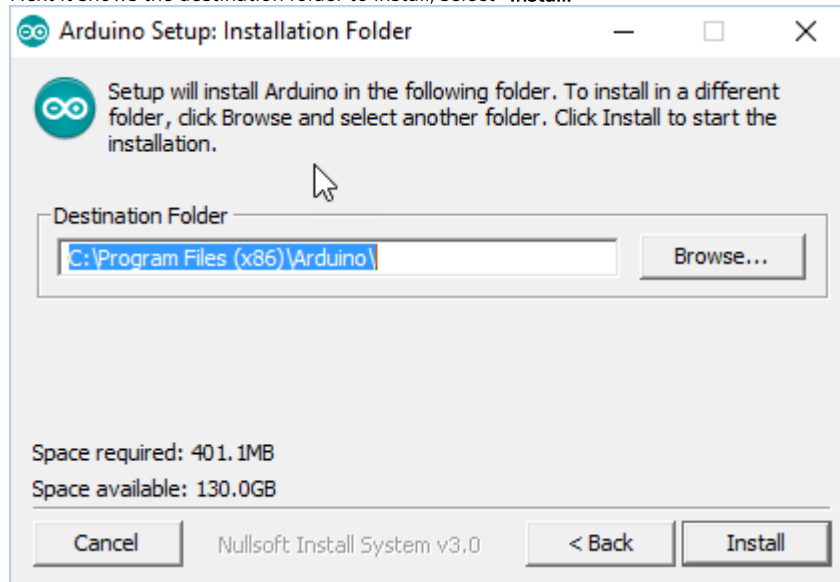
2. Install the latest Arduino IDE.
 - a. Once the download has completed double click "Arduino-x.x.xx-windows.exe."
 - b. Windows then prompts you to run this file, select "Run."
 - c. The Arduino setup displays the license agreement, select "I Agree."



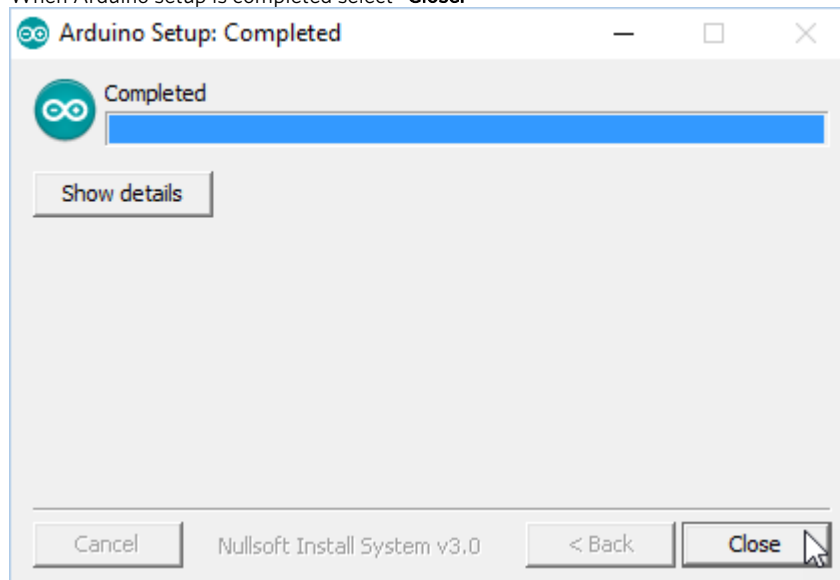
- d. It prompts you to select components to install, select "Next."



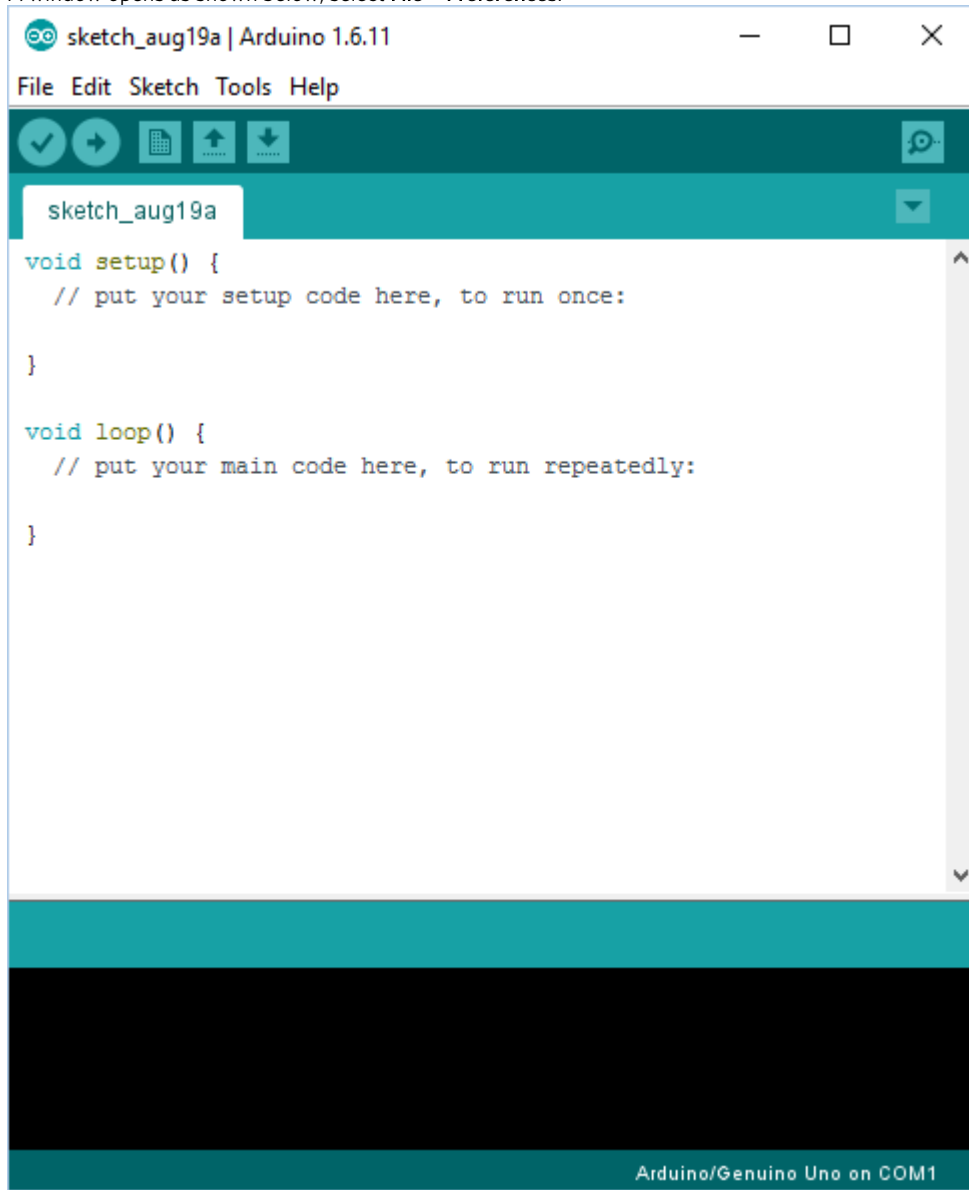
- e. Next it shows the destination folder to install, select **"Install."**



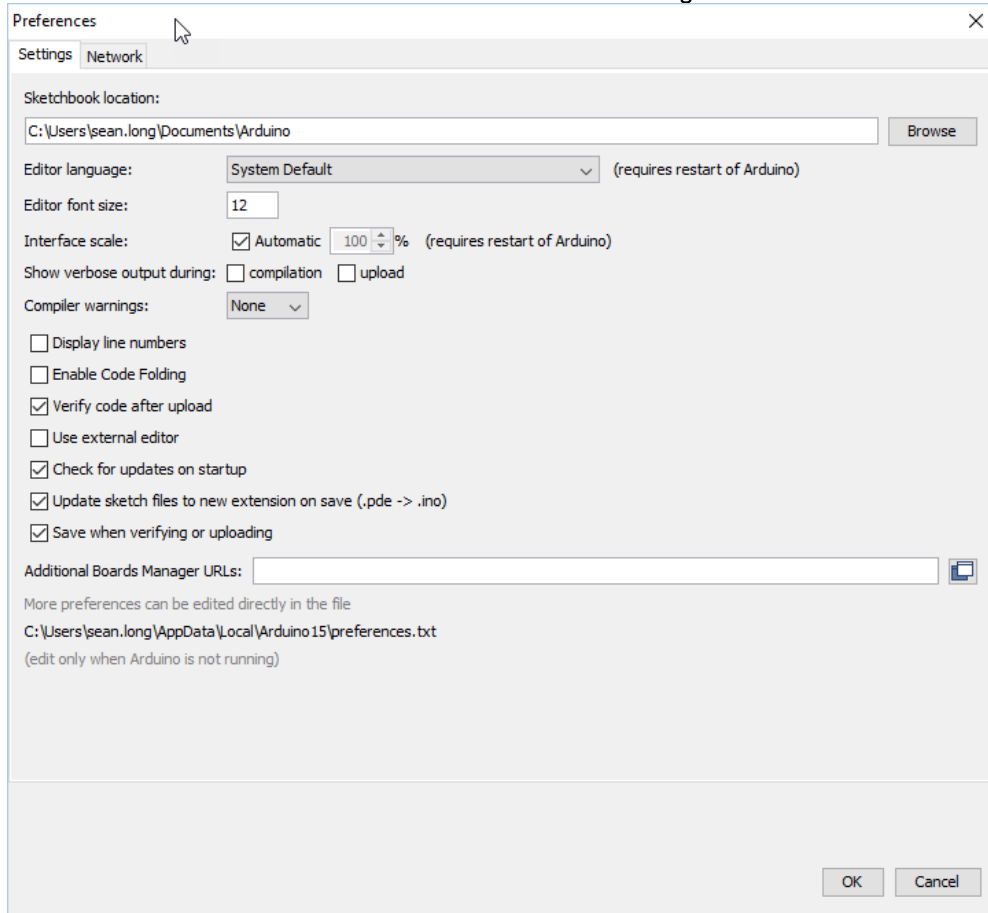
- f. When Arduino setup is completed select **"Close."**



3. Install Maxim's Pocket IO Board.
 - a. Locate the "Arduino" shortcut on your desktop and double click the icon to open the Arduino IDE.
 - b. A window opens as shown below, select **File > Preferences**.

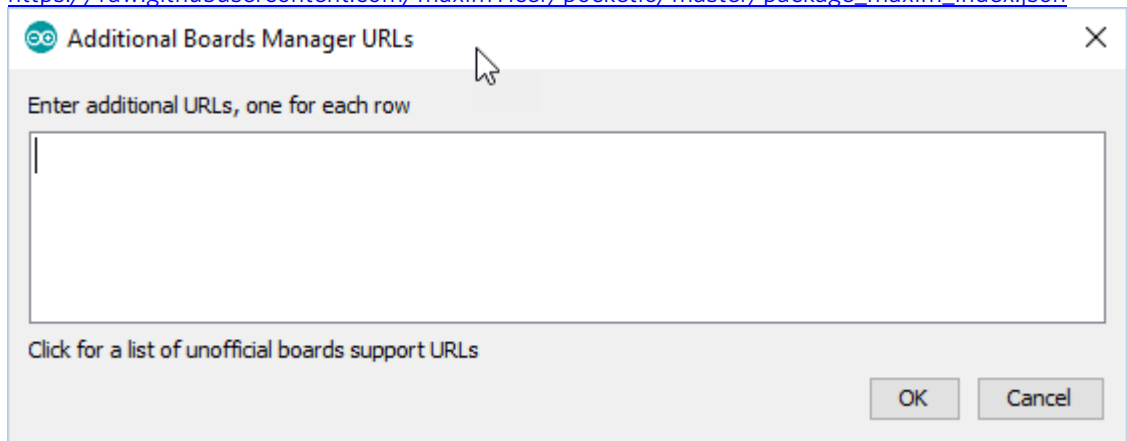


- c. In the “Preferences” window there is a section “Additional Boards Manager URLs.” Select this box.

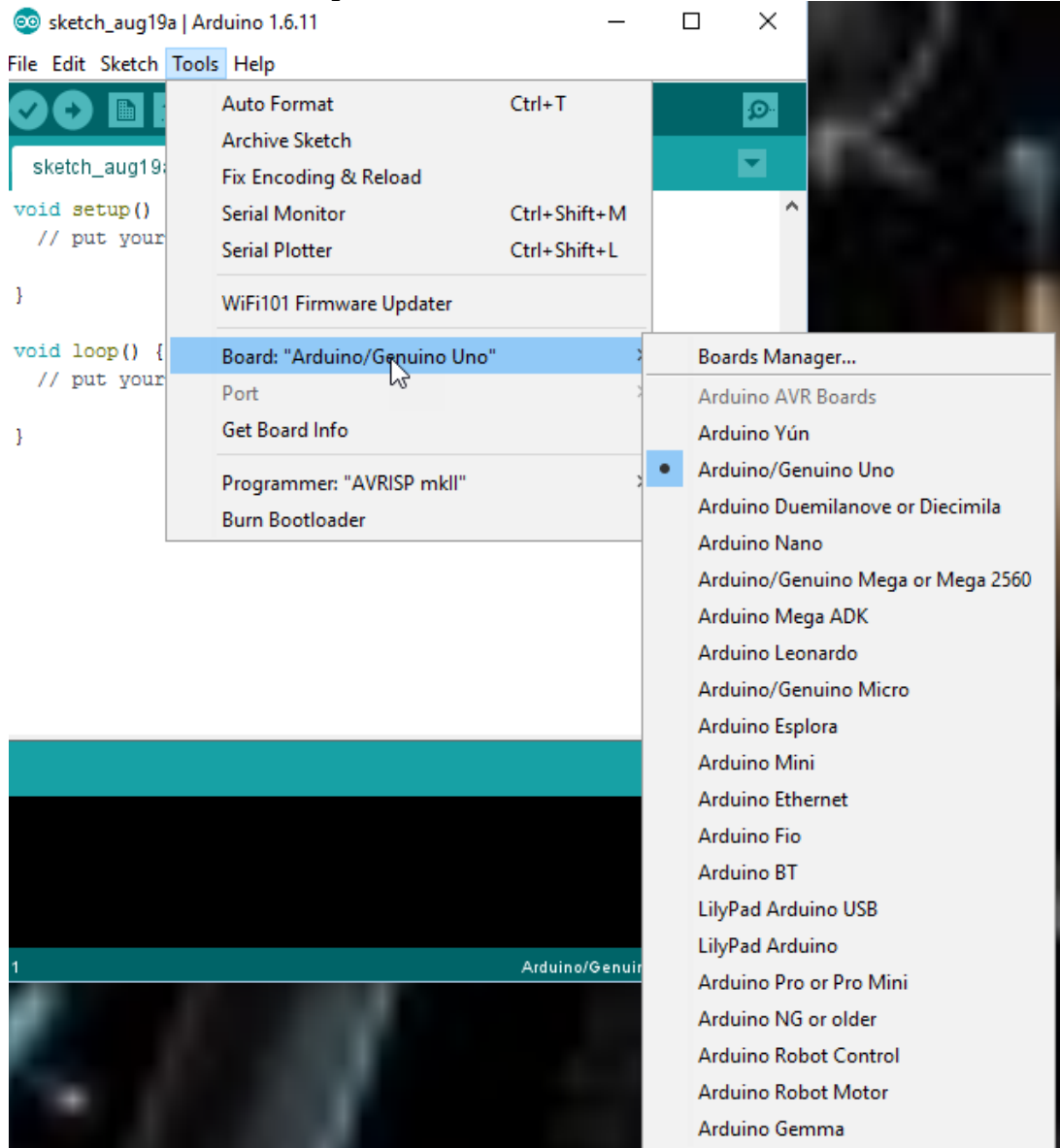


- d. In the box that opens, copy and paste the URL below into this window and select “OK”, then “OK” again.

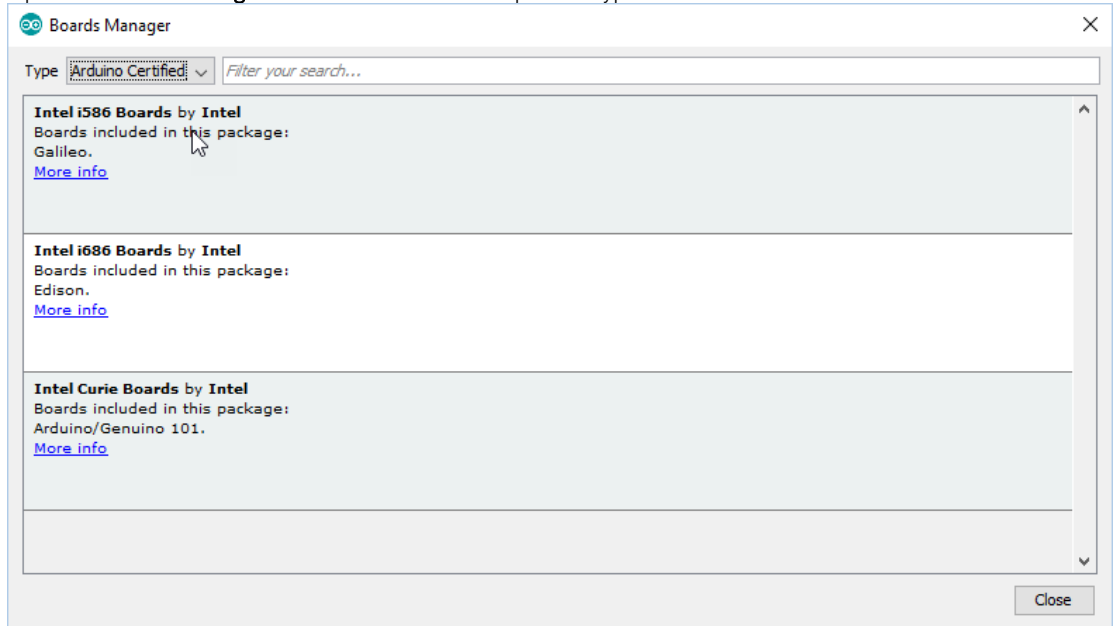
https://raw.githubusercontent.com/maximTicer/pocketio/master/package_maxim_index.json



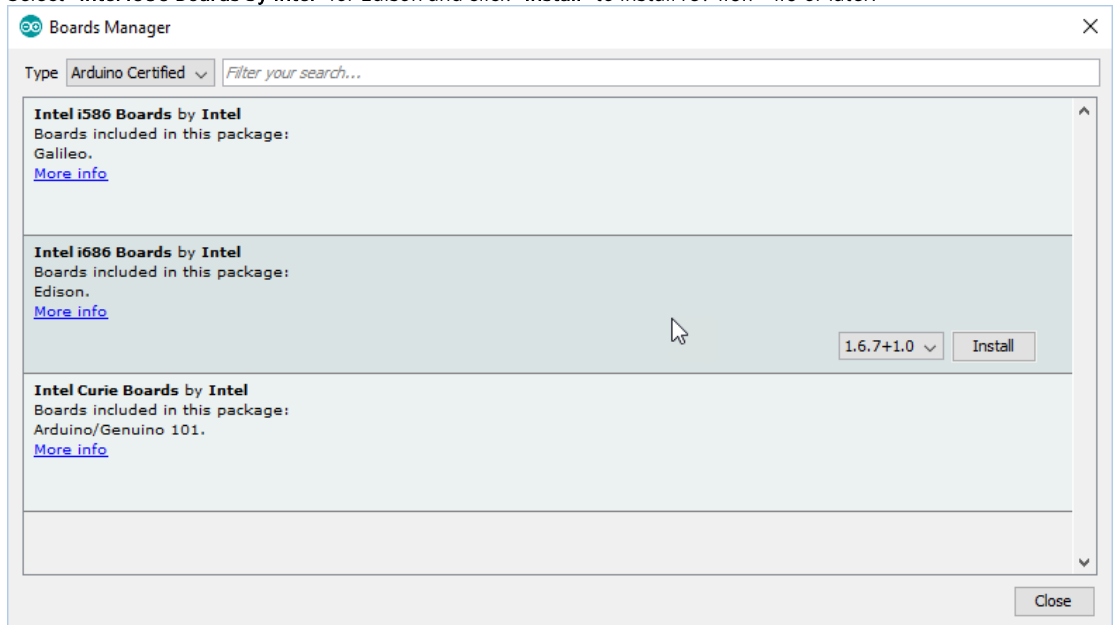
e. Select **Tools > Board > Board Manager**.



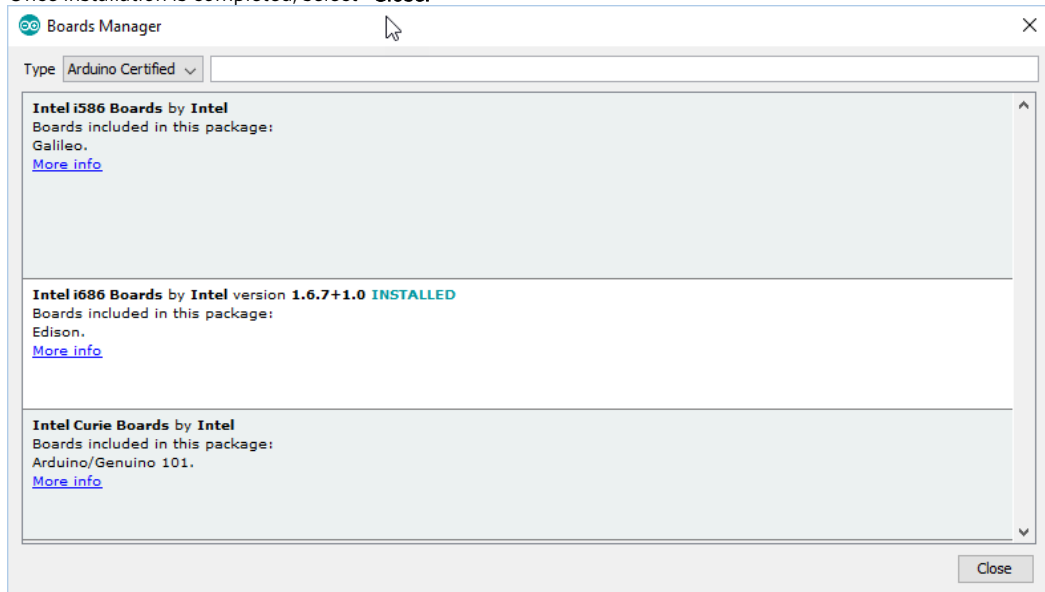
- f. Open the “Boards Manager” window and from the drop down Type menu select “Arduino Certified.”



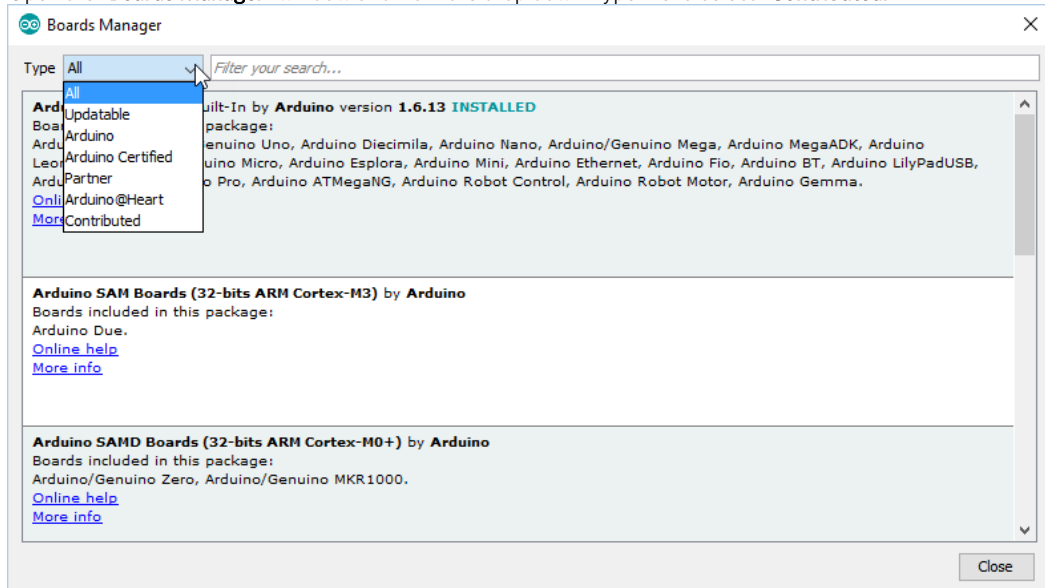
- g. Select “Intel i686 Boards by Intel” for Edison and click “Install” to install rev 1.6.7+1.0 or later.



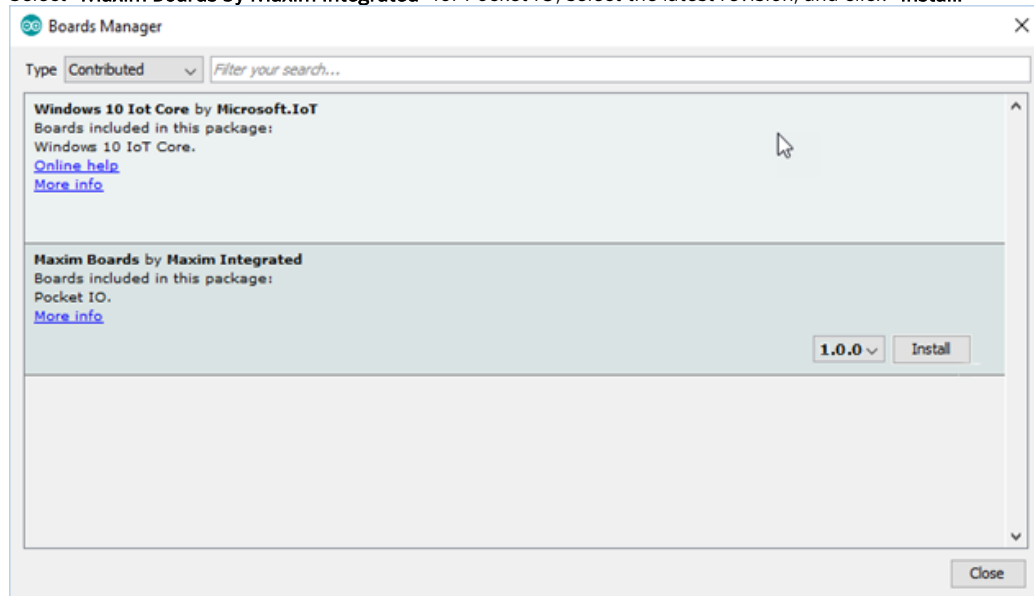
- h. Once installation is completed, select "Close."



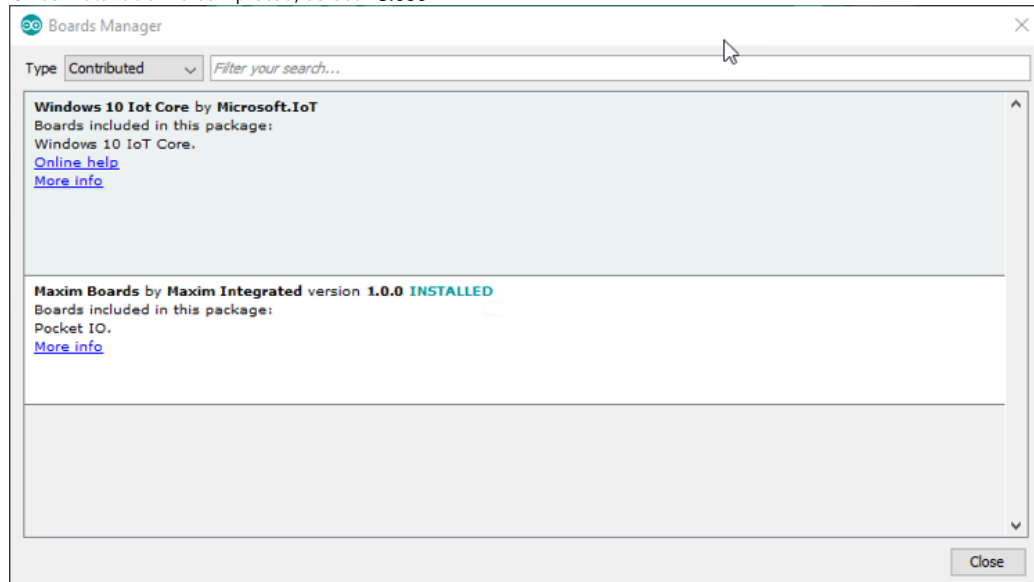
- i. Open the "Boards Manager" window and from the drop down Type menu select "Contributed."



- j. Select **"Maxim Boards by Maxim Integrated"** for Pocket IO, select the latest revision, and click **"Install."**



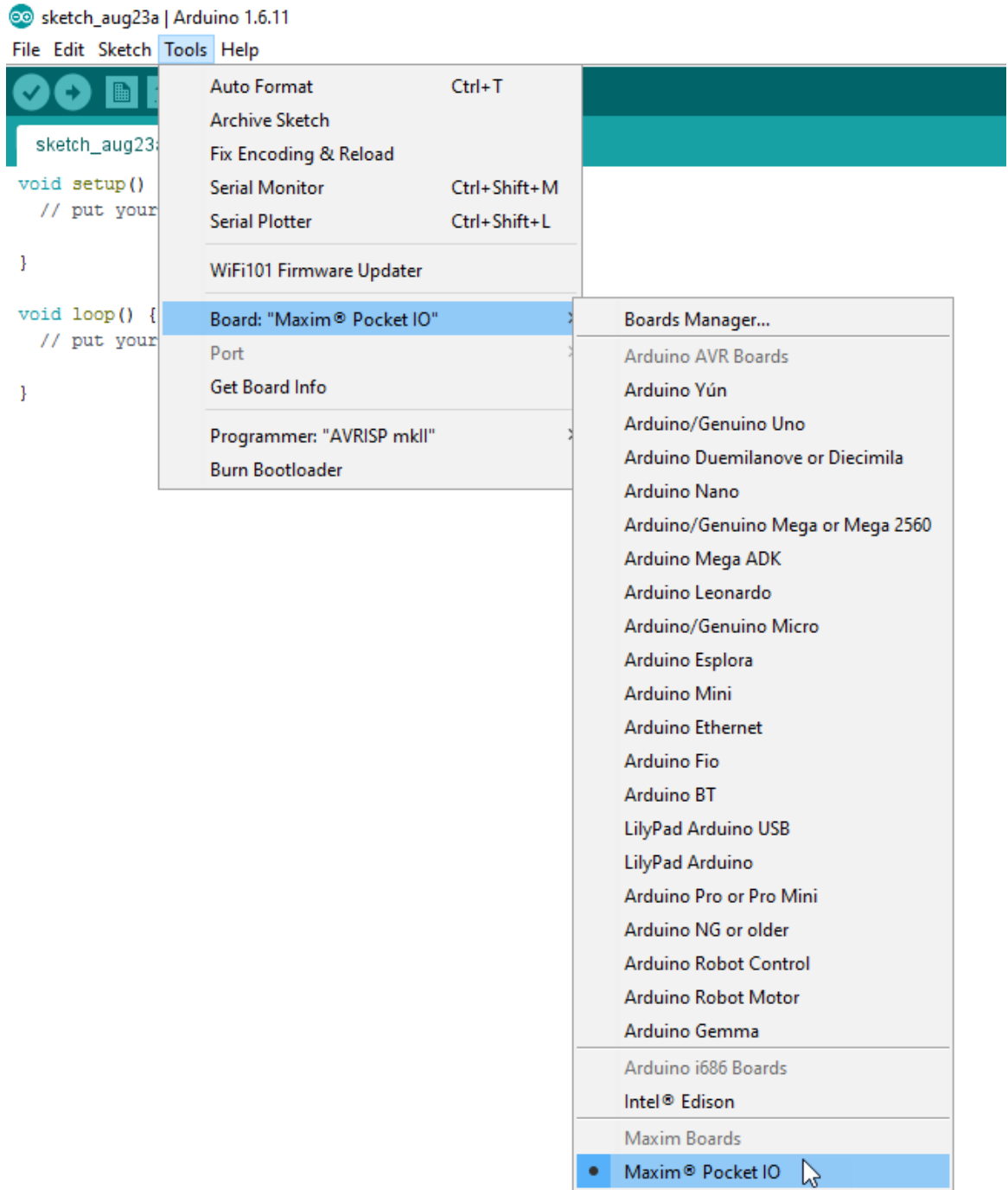
- k. Once installation is completed, select **"Close."**



Note: If the user is updating from a previous release to a newer release of the Pocket IO Board Manager, it is necessary to follow all of these steps:

- 1) Do NOT use the "Update" button.
- 2) Click "Remove" button to uninstall the existing Pocket IO libraries.
- 3) Fully close, then re-open all the Arduino IDE windows.
- 4) Select the version from the drop down menu and click "Install" to install the updated version of Pocket IO libraries.

4. Using the Pocket IO with Arduino IDE.
 - a. To select Pocket IO as the target board, select **Tools > Board > Maxim Pocket IO**.



- b. Make sure Pocket IO is powered with 24V, and connect the USB cable to the micro-USB connector labeled **"Edison Status"** (the one nearest to the green connector). If device drivers are not automatically installed use this link to download and install the drivers:
<http://downloadmirror.intel.com/24909/eng/IntelEdisonDriverSetup1.2.1.exe>
- c. Select **Tools > Port > COMXXX** (where xxx is whichever COM port was selected when you plugged it in).

The screenshot shows the Arduino IDE interface with the 'Tools' menu open. The 'Port' option is selected, and its submenu is visible, showing 'COM7 (Intel® Edison)' as the selected port. The background code editor shows the following code:

```
sketch_aug23a:  
void setup()  
  // put your code here  
}  
  
void loop() {  
  // put your code here  
}
```

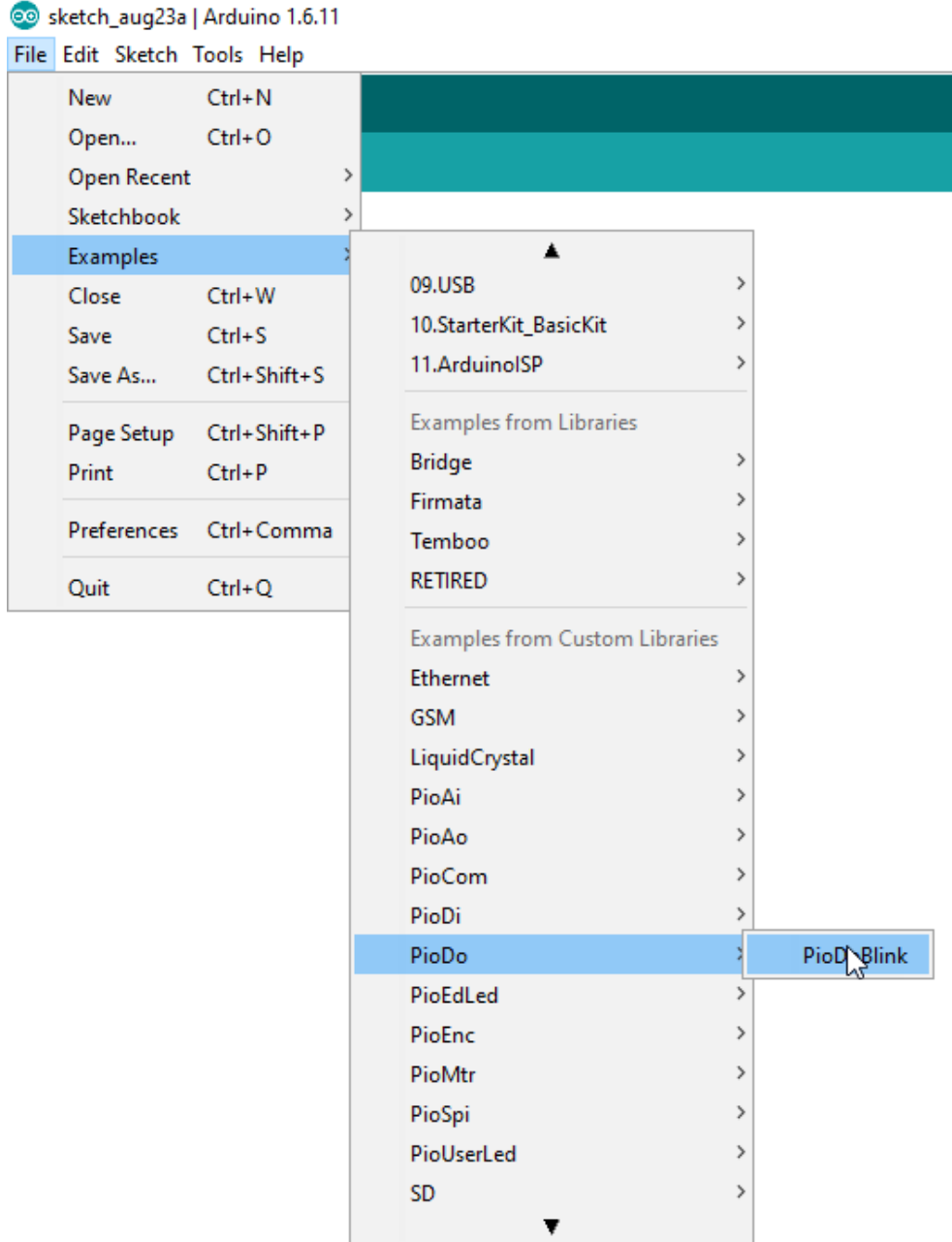
The Tools menu items and their keyboard shortcuts are:

- Auto Format (Ctrl+T)
- Archive Sketch
- Fix Encoding & Reload
- Serial Monitor (Ctrl+Shift+M)
- Serial Plotter (Ctrl+Shift+L)
- WiFi101 Firmware Updater
- Board: "Maxim® Pocket IO" >
- Port: "COM7 (Intel® Edison)" > (Selected)
- Get Board Info
- Programmer: "AVRISP mkII" >
- Burn Bootloader

The 'Port' submenu items are:

- Serial ports
- COM7 (Intel® Edison) (Selected)

- d. Next select **File > Examples > PioDo > PioDoBlink**.



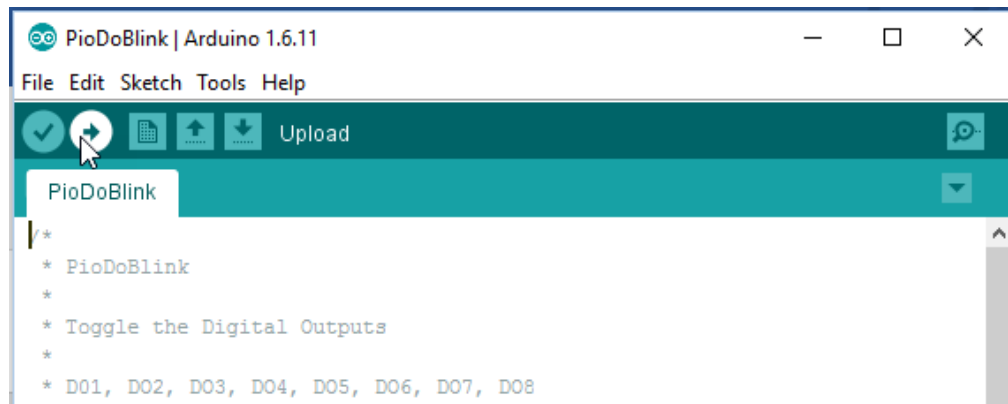
- e. A new window should appear with the example sketch selected. Press the circular button with the check mark in the top left corner to "Verify" or compile the sketch.



- f. The window indicates it is compiling with a progress bar, and when finished, displays “Done Compiling.”



- g. Now select the circular button with the right arrow, "**Upload**" transfers the data to the Edison and starts to run the compiled program.



- h. After a few seconds the message "**Done Uploading**" is displayed and you can see the LEDs on the board flashing driven by the digital outputs.
- i. A number of standard functions are included as examples to showcase the functionality of Pocket IO, or the user can develop their own sketches.
- j. Maxim has loaded a Pocket IO image to the FLASH memory on the Edison module to replace the standard Edison image. Whenever the Pocket IO reboots, such as after power cycling, the last Arduino sketch is loaded by default. This is not the case for the standard Edison image. Pocket IO comes preconfigured with a sketch to blink the user LEDs.

Trademarks

Arduino is a registered trademark of Arduino, LLC.

IEC is a registered service mark of the International Engineering Consortium, Inc.

Intel is a registered trademark and registered service mark of Intel Corporation.

IO-Link is a registered trademark of Profibus User Organization (PNO).

Linux is a registered trademark of Linus Torvalds.

Mac OS is a registered trademark of Apple Inc.

Pocket IO is a trademark of Maxim Integrated Products, Inc.

Wi-Fi is a registered certification mark of Wi-Fi Alliance Corporation.

Windows is a registered trademark and registered service mark of Microsoft Corporation.

©2016 by Maxim Integrated Products, Inc. All rights reserved. Information in this publication concerning the devices, applications, or technology described is intended to suggest possible uses and may be superseded. MAXIM INTEGRATED PRODUCTS, INC. DOES NOT ASSUME LIABILITY FOR OR PROVIDE A REPRESENTATION OF ACCURACY OF THE INFORMATION, DEVICES, OR TECHNOLOGY DESCRIBED IN THIS DOCUMENT. MAXIM ALSO DOES NOT ASSUME LIABILITY FOR INTELLECTUAL PROPERTY INFRINGEMENT RELATED IN ANY MANNER TO USE OF INFORMATION, DEVICES, OR TECHNOLOGY DESCRIBED HEREIN OR OTHERWISE. The information contained within this document has been verified according to the general principles of electrical and mechanical engineering or registered trademarks of Maxim Integrated Products, Inc. All other product or service names are the property of their respective owners.