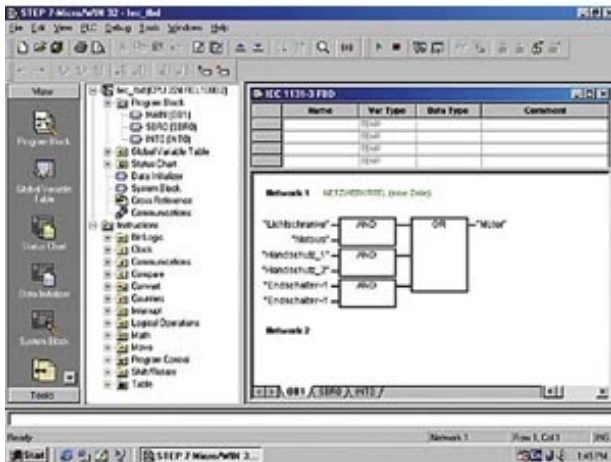


SIMATIC S7, STEP 7-Micro/WIN V4.0, single license for 1 installation
 E-SW, SW and documentation on CD, Class A, 6-languages(D,E,F,6
 languages (D,E,F,S,I,C) executable under WinXP SP3 (32 bit),
 Windows 7 (32/64 bit) Reference HW: SIMATIC S7-200



Standards, approvals, certificates

developed in accordance with IEC 61131 Yes

Operating systems

Runs under operating system	
• Windows 9x	No
• Windows ME	Yes
• Windows NT 4.0	No
• Windows 2000	Yes
• Windows 2003 Server	No
• Windows XP	Yes
• Windows 7	Yes

last modified: 12/28/2017