

TECHNICAL CHARACTERISTICS

SPECIFICATION

- >Rating: 50mA, 12VDC
- >Contact Resistance:
 - Initial: 100mOHM max.
 - After Life Test: 20OHM max.
- >Insulation Resistance: min. 100MOHM at 500VDC
- >Dielectric Strength: 250VAC for 1 minute
- >Stroke: 0.25 + 0.2 mm / - 0.1 mm

MATERIAL

- >Cover: Stainless Steel
- >Stem: LCP UL 94V-0
- >Frame: LCP UL 94V-0, color Black
- >Contact: Stainless Steel with silver cladding
- >Terminal: copper alloy with silver plating
- >Tape: Polyimide tape

SOLDERING INFORMATION

- >Terminal in J-Bend version
- >Reflow soldering according to JEDEC J-STD-020D
- >Hand soldering under 350 °C for 3 sec. max

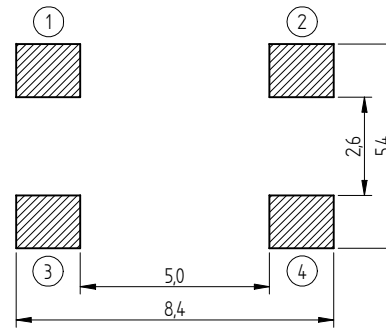
ENVIRONMENTAL

- >Storage condition: -40 °C ~ +85 °C
- >Operation condition: -40 °C ~ +85 °C
- >Compliance: Lead Free, ROHS, Reach

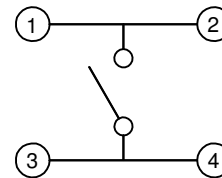
PACKAGING INFORMATION

- >Tape & Reel

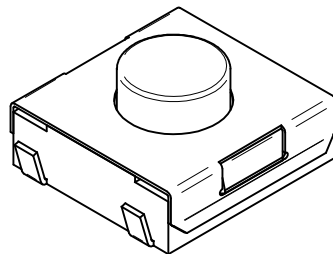
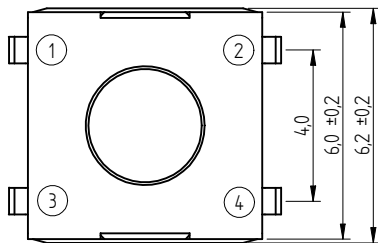
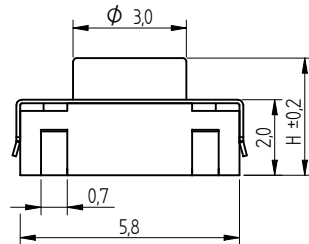
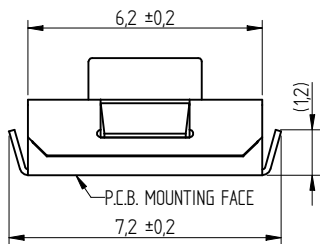
PN	Force	Color of Stem	Life cycle	-025		-031	
				H	Ø D	H	Ø D
430 483 xxx 816	160g ± 50gf	Black	1.000.000				
430 473 xxx 826	260g ± 50gf	White	500.000	2.5	3.0	3.1	3.0
430 453 xxx 836	360g ± 50gf	Salmon	200.000				



P.C.B. MOUNTING PLAN



SCHEMATIC



		Projection		GENERAL TOLERANCE .x = +/- 0,2 .xx = +/- 0,15		Basic material	
				Date 09-09-14 Name Jelisarow		DESCRIPTION SwTact	
				Checked		WS-TSW 6x6mm washable Tact Switch, J-Bend SMD version	
				Würth Elektronik eiCan		Scale 5:1 Position	
				EDV NO 4304x3xxx8x6.dft		Drawing.- No. 4304x3xxx8x6	
REV	FILE	DATE	BY			System Solid Edge V20	
						SIZE A4	