

MICRO SWITCH

A DIVISION OF MINNEAPOLIS-HONEYWELL REGULATOR COMPANY

FED. MFR. CODE 91929

ACTUATOR-SWITCH

CATALOG LISTING

JX-41

5

JX-41

M

DRAWING NUMBER

29

X B

ISSUE

X A

REPLACES

RELEASE NO. SR 7758

CHECK

CHECK

CHECK

CHECK

CHECK

CHECK

CHECK

CHECK

G.C.H. / 12 SEPT 58

D. A. W. 29, AUG '58

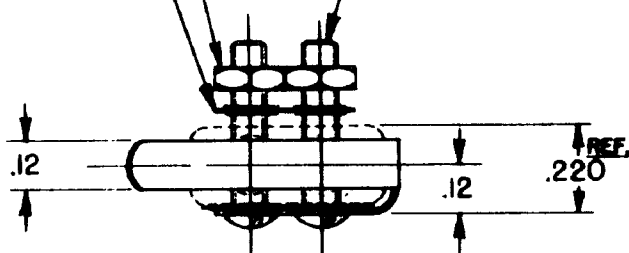
DRAWN

FO-30378

(2) 2-56 UNC HEX NUT

(2) 2-56 UNC X .438 ^{REF.} ROUND HEAD MACHINE SCREW.

(2) LOCKWASHER



.370 ± .020

① .370 REF. FREE POSITION

② .295 ± .030 OPERATING POSITION

.09

.20

FLEXIBLE INSULATOR

REF. .188

.187

REF. .527

CORROSION RESISTANT STEEL ACTUATOR (TYPE 301) ③

③ .010 REF.

DOTTED LINES INDICATE BASIC SWITCH IN PLACE.

NOTE -

- ① - SCREWS, NUTS, LOCKWASHERS AND INSULATOR FURNISHED UNASSEMBLED.
- ② SLIGHT ROTATION BETWEEN BASIC AND ACTUATOR MAY BE NECESSARY TO OBTAIN OPERATING POSITION

THIS DRAWING COVERS A PROPRIETARY ITEM AND IS THE PROPERTY OF MICRO SWITCH, A DIVISION OF MINNEAPOLIS-HONEYWELL REGULATOR CO. THIS DRAWING IS NOT TO BE COPIED OR USED WITHOUT THE APPROVAL OF MICRO SWITCH.

CHARACTERISTICS WITH ISX1-T BASIC SWITCH INSTALLED

OPERATING FORCE----- 6 OZ MAX.
 RELEASE FORCE----- 1 OZ MIN.
 DIFFERENTIAL TRAVEL--- .025 MAX.
 OVERTRAVEL----- .015 MIN.

ELECTRICAL DATA

CONTACT ARRANGEMENT

SCALE 2 TO 1

DO NOT SCALE PRINT

UNLESS OTHERWISE SPECIFIED DIMENSIONS ARE IN INCHES

TOLERANCES ARE:

ONE PLACE (.0) ±.030
 TWO PLACE (.00) ±.018
 THREE PLACE (.000) ±.008
 ANGLED ±

WEIGHT

①