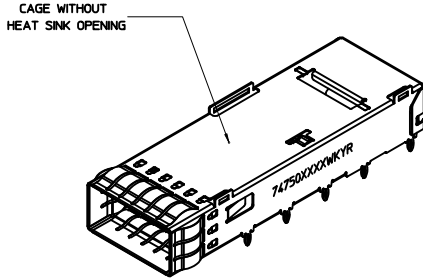
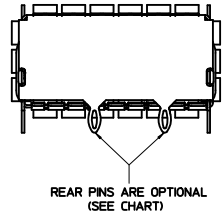
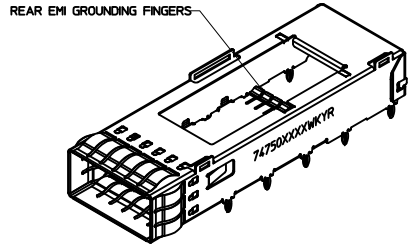
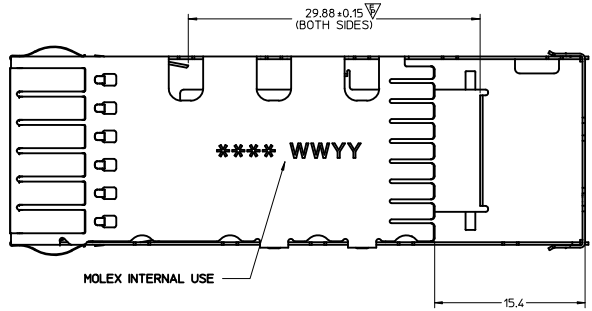


PART NO. AND WEEK/YEAR DATE CODE TO BE PRINTED ON SIDE OF COMPLETED CAGE ASSEMBLY APPROXIMATELY AS SHOWN. SEE TABLE BELOW FOR DATE CODE INFORMATION.

WEEK/YEAR DATE CODE TABLE	
WEEK	01 THRU 52 EXAMPLE: 01 = FIRST WEEK OF YEAR 52 = LAST WEEK OF YEAR
YEAR	10, 11, 12 ETC. EXAMPLE: YEAR 2010 = 10



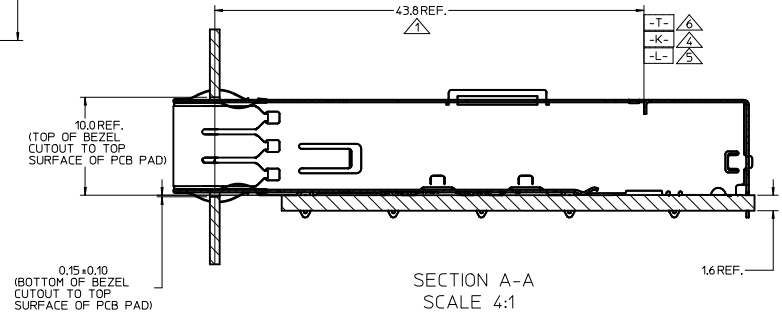
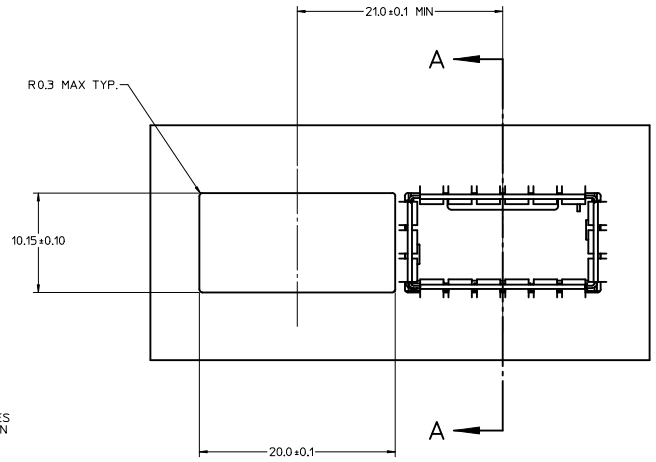
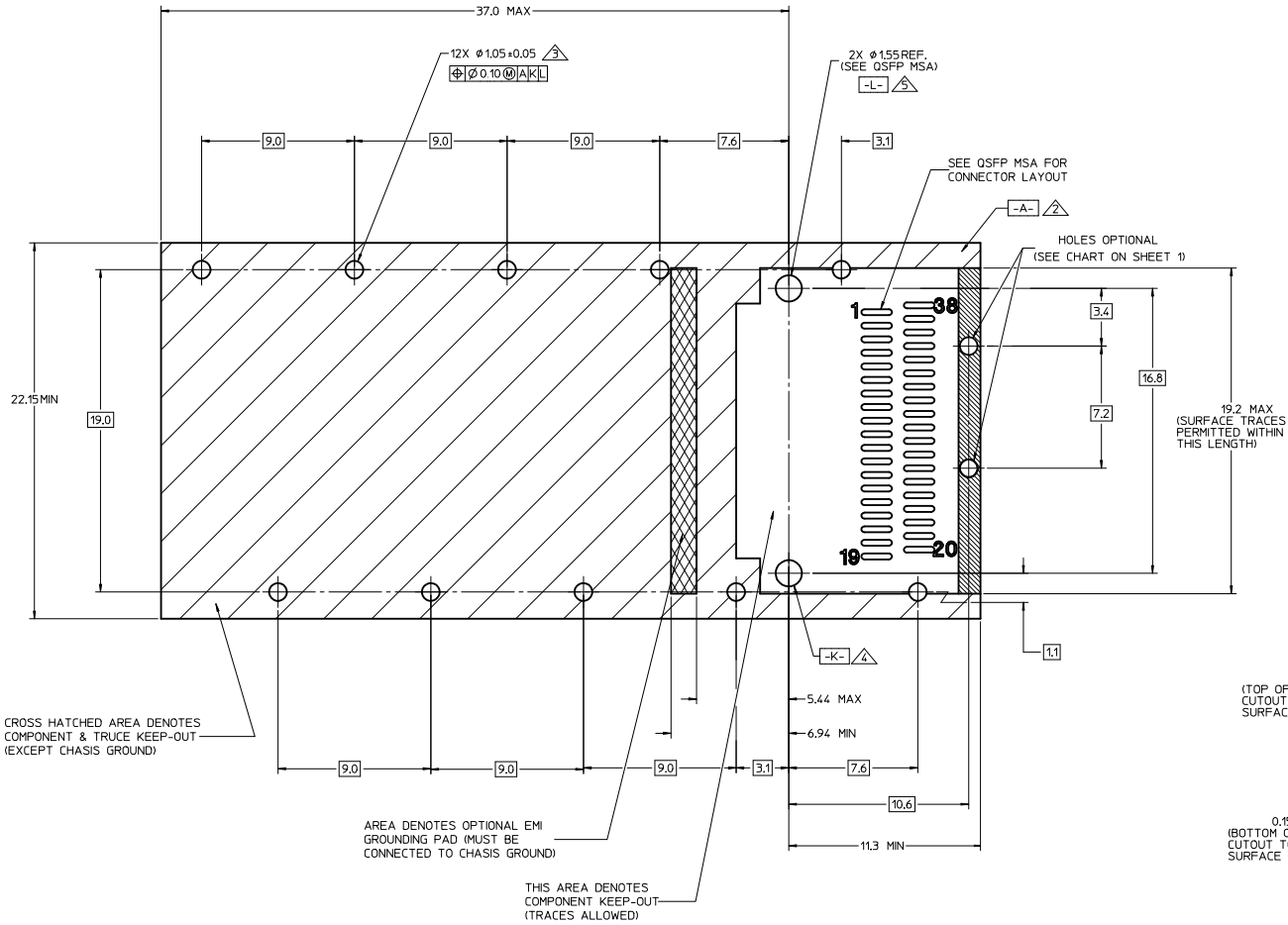
NOTES:

- PRESS FIT LEGS 2.28mm [0.090"] LONG
- SINGLE SIDED BOARD THICKNESS  
NOMINAL: 1.60 [0.062"]  
MINIMUM: 1.44 [0.057"]  
BELLY TO BELLY BOARD THICKNESS  
NOMINAL: 2.30 [0.090"]  
MINIMUM: 2.07 [0.081"]
- MATERIAL: COPPER ALLOY  
PLATING: NICKEL
- REFERENCE DOCUMENTS: PRODUCT SPECIFICATION: QSFP MSA
- LEAD FREE, NO RoHS EXEMPTIONS.

FINISHED ASSEMBLY P/N	DESCRIPTION	# OF REAR LEGS	DIM A	HEAT SINK OPENING
747500012	QSFP+ 1X1 CAGE W/ EMI SPRING FINGER - PRESS FIT	2	3.05	OPEN TOP
747500021	QSFP+ 1X1 CAGE W/ EMI SPRING FINGER - PRESS FIT	2	2.28	OPEN TOP
747500023	QSFP+ 1X1 CAGE W/ EMI SPRING FINGER - PRESS FIT	0	2.28	OPEN TOP
747500024	QSFP+ 1X1 CAGE W/ EMI SPRING FINGER - PRESS FIT	2	2.28	CLOSED TOP

ADDED 747500012 EC NO: CPG2012-1304 DRAWNS/MAIA 2012/04/12 CHKD/KLOYD 2012/04/13 APPR/KLOYD 2012/04/13	QUALITY SYMBOLS	GENERAL TOLERANCES (UNLESS SPECIFIED)	DIMENSION STYLE	SCALE	DESIGN UNITS	THIRD ANGLE PROJECTION
	▽=0	4 PLACES ± --- INCH	MM ONLY	4:1	METRIC	QSFP+ CAGE ASSEMBLY WITH SPRING FINGERS  <b>molex</b> MATERIAL NO. SD-74750-0021 DOCUMENT NO. SD-74750-0021 SHEET NO. 1 OF 4
	▽=0	3 PLACES ± 0.13				
	▽=1	2 PLACES ± 0.25				
	0 PLACE ± ---					
	ANGULAR ± 1°	DRAFT WHERE APPLICABLE MUST REMAIN WITHIN DIMENSIONS	SEE TABLE			

# PCB LAYOUT FOR SINGLE SIDED APPLICATIONS



CROSS HATCHED AREA DENOTES COMPONENT & TRUCE KEEP-OUT (EXCEPT CHASIS GROUND)

AREA DENOTES OPTIONAL EMI GROUNDING PAD (MUST BE CONNECTED TO CHASIS GROUND)

THIS AREA DENOTES COMPONENT KEEP-OUT (TRACES ALLOWED)

## NOTES:

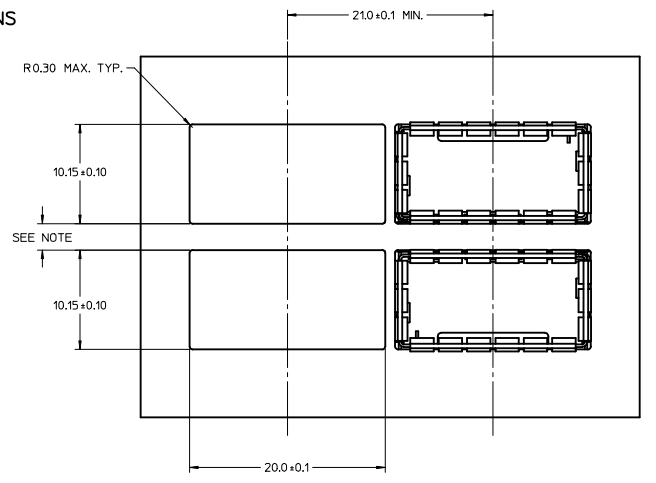
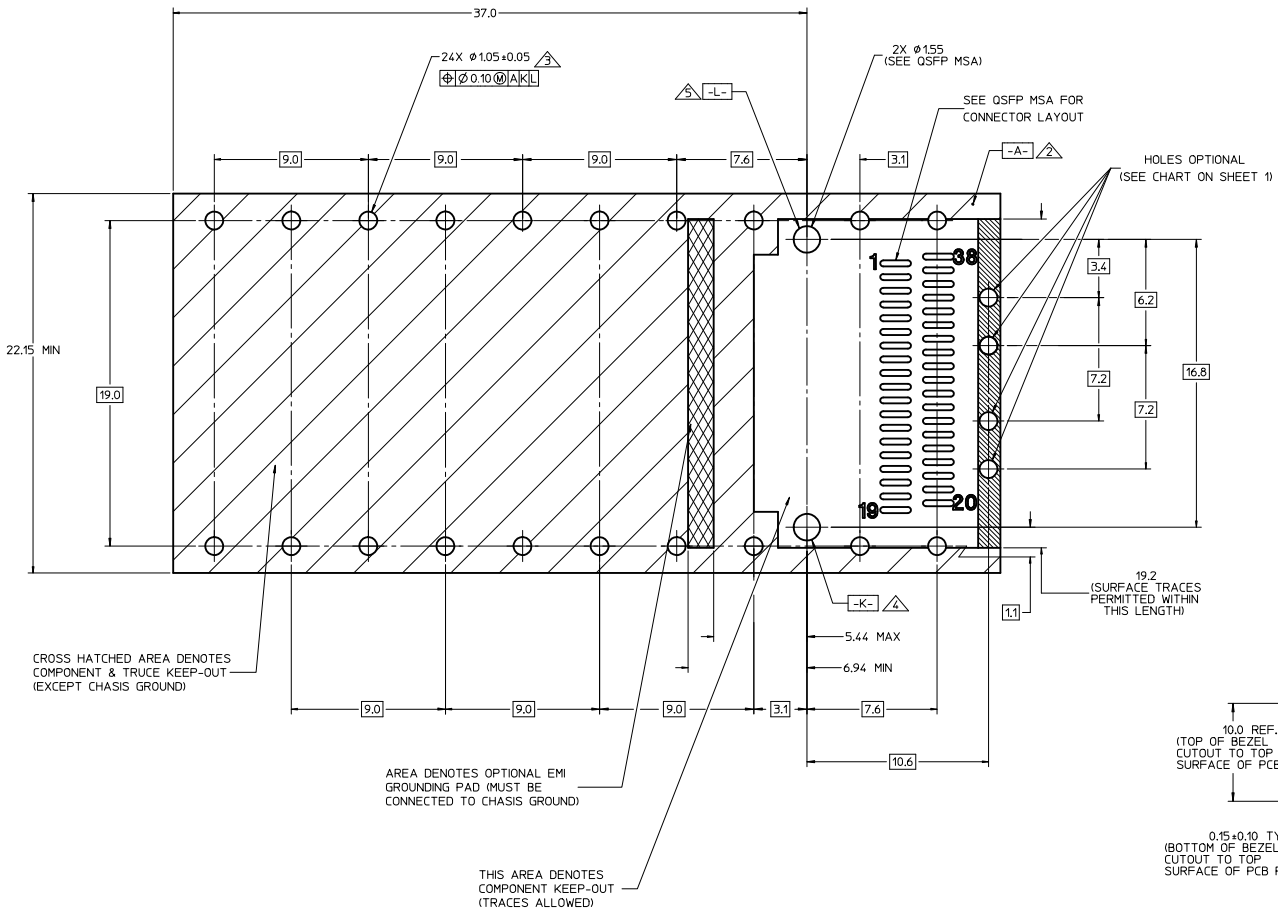
1. SEE QSFP MSA SPECIFICATION FOR BEZEL LOCATION TOLERANCE
2. DATUM -A- IS TOP SURFACE OF HOST BOARD PER MSA
3. FINISHED HOLE SIZE (AFTER PLATING)
4. DATUM -K- IS HOST BOARD THRU HOLE #1 TO ACCEPT CONNECTOR GUIDE POST PER MSA
5. DATUM -L- IS HOST BOARD THRU HOLE #2 TO ACCEPT CONNECTOR GUIDE POST PER MSA
6. DATUM -T- IS HARD STOP ON CAGE PER MSA

<b>ADDED 747500012</b> EC NO: CPG2012-1304 DRWNSWAJA 2012/04/12 CHYOKKLOYD 2012/04/13 APPR:KLOYD 2012/04/13	QUALITY SYMBOLS	GENERAL TOLERANCES (UNLESS SPECIFIED)	DIMENSION STYLE	SCALE	DESIGN UNITS	THIRD ANGLE PROJECTION
	▽=0	mm INCH	MM ONLY	1:1	METRIC	☉
	▽=0	4 PLACES ± ---	CHIRSCHY 2007/07/23	DATE	TITLE	
	▽=0	3 PLACES ± ---	BRUSSELL 2007/07/23	DATE	QSFP+ CAGE ASSEMBLY WITH SPRING FINGERS	
	ANGULAR ± 1 °	DRAFT WHERE APPLICABLE MUST REMAIN WITHIN DIMENSIONS	APPROVED BY	DATE	DOCUMENT NO.	
	SEE SHEET 1		RMAMMOOD 2010/11/01	2010/11/01	SD-74750-0021	
			MATERIAL NO.	DATE	SHEET NO.	
					2 OF 4	

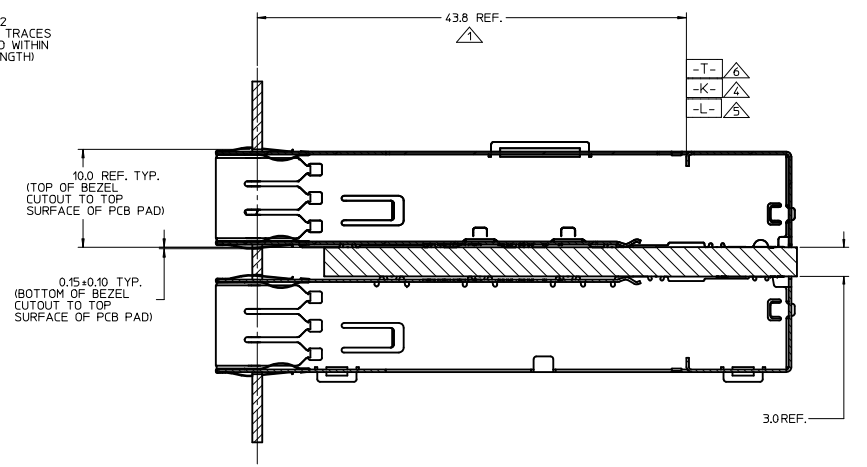
**molex**

THIS DRAWING CONTAINS INFORMATION THAT IS PROPRIETARY TO MOLEX INCORPORATED AND SHOULD NOT BE USED WITHOUT WRITTEN PERMISSION

PCB LAYOUT FOR BELLY TO BELLY APPLICATIONS



NOTE:  
BEZEL CUTOUT LOCATIONS FOR BELLY TO BELLY APPLICATIONS  
ARE DEPENDENT ON PCB THICKNESS



- NOTES:
1. SEE QSFP MSA SPECIFICATION FOR BEZEL LOCATION TOLERANCE.
  2. DATUM -A- IS TOP SURFACE OF HOST BOARD PER MSA.
  3. FINISHED HOLE SIZE (AFTER PLATING).
  4. DATUM -K- IS HOST BOARD THRU HOLE #1 TO ACCEPT CONNECTOR GUIDE POST PER MSA.
  5. DATUM -L- IS HOST BOARD THRU HOLE #2 TO ACCEPT CONNECTOR GUIDE POST PER MSA.
  6. DATUM -T- IS HARD STOP ON CAGE PER MSA.

ADDED 747500012 EC NO: CPG2012-1304 DRWNSWAIA 2012/04/12 CHYOKKLOYD 2012/04/13 APPR-KLOYD 2012/04/13	QUALITY SYMBOLS ▽=0 ▽=0 ▽=0	GENERAL TOLERANCES (UNLESS SPECIFIED) DIMENSION STYLE MM ONLY		DRAWN BY CHIRSCHY	DATE 2007/07/23	SCALE 1:1	DESIGN UNITS METRIC	THIRD ANGLE PROJECTION
		DRAFT WHERE APPLICABLE MUST REMAIN WITHIN DIMENSIONS		CHECKED BY BRUSSELL	DATE 2007/07/23			
		ANGULAR ± 1 °		APPROVED BY RMAHOOD	DATE 2010/11/01	MATERIAL NO. SEE SHEET 1	DOCUMENT NO. SD-74750-0021	SHEET NO. 3 OF 4

THIS DRAWING CONTAINS INFORMATION THAT IS PROPRIETARY TO MOLEX INCORPORATED AND SHOULD NOT BE USED WITHOUT WRITTEN PERMISSION

DATE	REV	DESCRIPTION
2007/07/23	A	INITIAL RELEASE
2007/08/06	B	CHANGED ALL TANGENT LINES FROM DASHED LINES TO SOLID LINES
2007/08/10	C	1. ADDED COMPONENT P/N COLUMN TO TABLE 2. ADDED 'COMPONENT' TO NOTE IN BOTTOM VIEW ON SHEET 1 3. CHANGED TEXT IN MATERIAL NO. SECTION OF TITLE BLOCK TO READ 'SEE TABLE'
2008/07/10	D	1. REMOVED COMMENTS FROM TABLE ON SHEET 1 2. ADDED 'HOLES OPTIONAL' NOTE TO PCB LAYOUT ON SHEET 2 AND SHEET 3 3. ADDED 747500024 TO TABLE ON SHEET 1 AS WELL AS ISO VIEW 4. UPDATED 'COMPONENT PART NUMBER AND DATE CODE' NOTE ON SHEET 1
2008/12/16	E	1. 20.4 DIMENSION WAS 20.38 REF. 2. 58.8 DIMENSION WAS 58.80 REF. 3. 2.28 TYP. DIMENSION WAS 2.28 REF. 4. 15.4 DIMENSION WAS 15.40 REF.
2009/04/13	F	1. REVISED COMPONENT P/N FOR MOLEX P/N 747500024 (CHANGED FROM 747540104 TO 747500104)
2010/10/29	G	1. 20.5 MAX DIMENSION WAS 20.4 2. 19.2 MAX DIMENSION WAS 16.2 MAX
2011/04/05	H	1. ADDED PRINTED DATE CODE TO LEFT SIDE OF CAGE AND ASSOCIATED NOTES. 2. ADDED CUTAWAY 1 AND CRITICAL TO FUNCTION DIMENSION 29.88 ±0.15, SHEET 1. 3. REMOVED 74750 FROM BOTTOM OF CAGE, SHEET 1. 4. UPDATED RoHS NOTE (NOTE 5) TO 'LEAD FREE, NO RoHS EXEMPTIONS' ON SHEET 1. 5. ADDED END VIEW, SHEET 1.
2012/04/13	I	1. ADDED 747500012 TO P/N TABLE, SHEET 1. 2. UPDATED BELLY-TO-BELLY CAGE VIEW, SHEET 3. 3. ADDED BELLY-TO-BELLY BEZEL AND DIMENSIONS, SHEET 3.

ADDED 747500012 EC NO: CPG2012-1304 DRWN:SWAJA 2012/04/12 CHK:KLOYD 2012/04/13 APPR:KLOYD 2012/04/13	QUALITY SYMBOLS	GENERAL TOLERANCES (UNLESS SPECIFIED)	DIMENSION STYLE	SCALE	DESIGN UNITS	THIRD ANGLE PROJECTION	
	∇=0 ∇=0 ∇=0	4 PLACES ±--- ±--- 3 PLACES ±--- ±--- 2 PLACES ±0.13 ±--- 1 PLACE ±0.25 ±--- 0 PLACE ±--- ±---	mm INCH	MM ONLY	1:1	METRIC	☉
	DRAWN BY DATE CHIRSCHY 2007/07/23	TITLE					
	CHECKED BY DATE BRUSSELL 2007/07/23	QSFP+ CAGE ASSEMBLY WITH SPRING FINGERS  <b>molex</b>					
APPROVED BY DATE RMAHMOOD 2010/11/01	ANGULAR ± 1 °	DRAFT WHERE APPLICABLE MUST REMAIN WITHIN DIMENSIONS	MATERIAL NO.	DOCUMENT NO.	SHEET NO.		
SIZE D	SEE SHEET 1		SD-74750-0021		4 OF 4		
THIS DRAWING CONTAINS INFORMATION THAT IS PROPRIETARY TO MOLEX INCORPORATED AND SHOULD NOT BE USED WITHOUT WRITTEN PERMISSION							