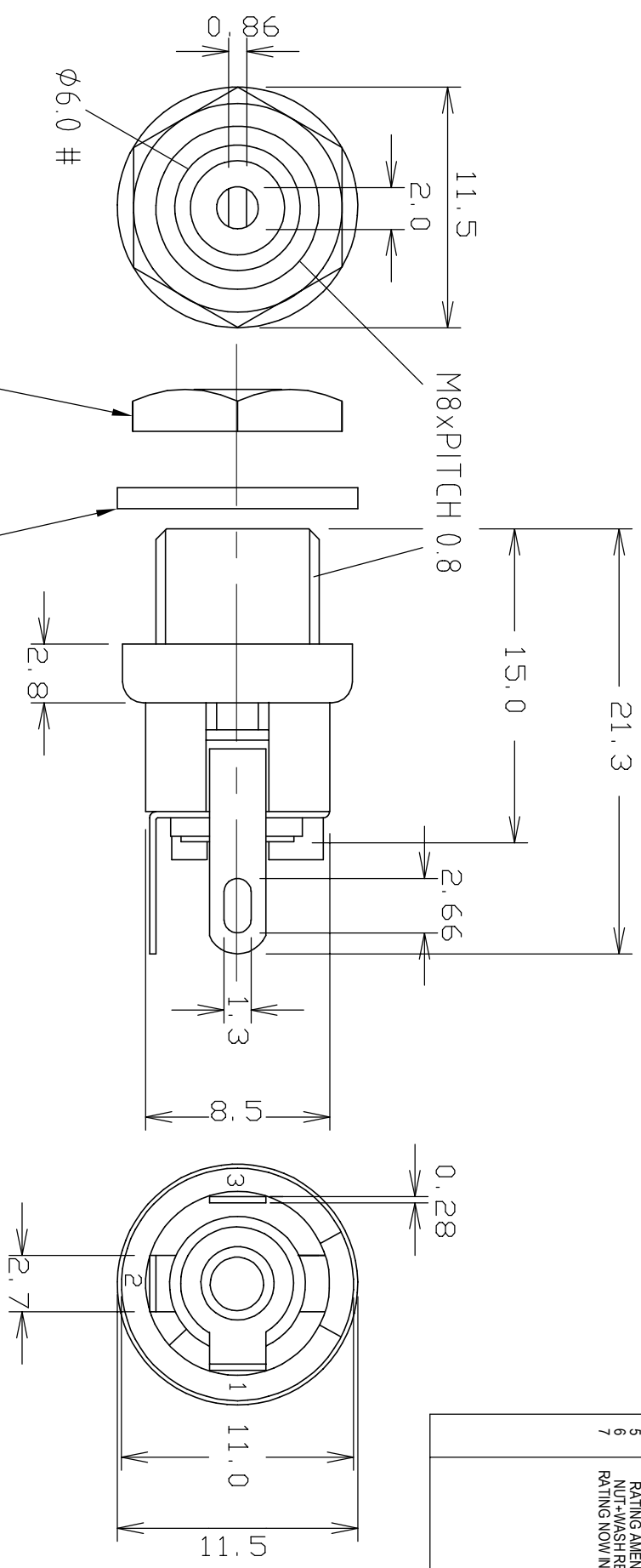
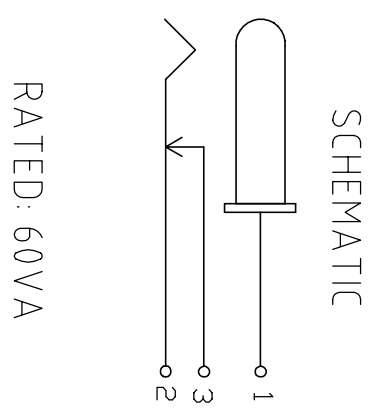


NO.	REVISIONS	DATE
1	1st DRAWN	28/04/9
2	SEE #	19/07/9
3	RATING AMEND	11/08/9
4	WASH DIM DEL	28/07/0
5	RATING AMEND	30/10/0
6	NUT+WASH REF	17/03/0
7	RATING NOW N VA	28/01/1



VARIANTS		
CENTRE PIN	MODEL No.	PART No.
Ø2.0mm	SCD-026	FC681445
Ø2.5mm	SCD-026A	FC681446



**ROHS**  
**COMPLIANT**

**TOLERANCE**  
 NO DEC. PLACE ± 0.50  
 1 DEC. PLACE ± 0.20  
 2 DEC. PLACE ± 0.10  
 HOLE Ø ± 0.10  
 ANGLES ± 1/2°  
 UNLESS  
 OTHERWISE STATED

**Cliff Electronic Components Ltd.**

76 Holmehorne Avenue, Holmehorne Industrial Estate,  
 Redhill, Surrey, RH1 2PF, England, UK  
 Tel: 01737-771375 Fax: 01737-766012 Website: www.cliffuk.co.uk

DIMENSIONS IN MILLIMETERS UNLESS OTHERWISE STATED. WORK TO DIMENSIONS. REMOVE ALL BURRS. IF IN DOUBT ASK.  
 MATERIAL: **BRASS / PBT**  
 FINISH: **NI PLATED / Ag PLATED / AS MOULDED**  
 DRAWN: **C.A.M.J.** APPROVED: **R.W.T.**

TITLE: **DC POWER JACK SCD-026**  
 DRWG. No. **FC681445**

DO NOT SCALE  
 FORM: ADDRWC

THE CONTENTS OF THIS DOCUMENT MUST NOT BE COPIED OR DISCLOSED TO A 3rd PARTY WITHOUT WRITTEN PERMISSION OF CLIFF UK © 1992