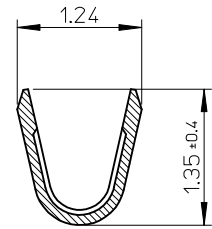
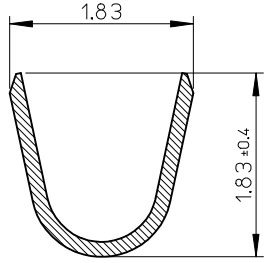


NOTES.
 1. 適合ハウジング: 504051****
 APPLICABLE HOUSING : 504051****
 2. 材質: 銅合金
 MATERIAL : COPPER ALLOY
 3. メッキ仕様: 金メッキ、ニッケル下地
 PLATING : GOLD PLATING
 NICKEL UNDER PLATING
 4. 圧着後、CS-504052-001の内容を満たす事
 FULFILL THE CONTENTS OF
 CS-504052-001 AFTER CRIMP



SECTION A-A



SECTION B-B

φ0.8 - 1.1mm	AWG #24 - 28	5040520098	CHAIN
INS. RANGE	WIRE RANGE	ORDER No.	FORM

RELEASED EC NO: J2013-0278 DRWN: THANYU 2012/03/29 CHKD: KASAKAWA 2012/09/04 APPR: YOITO 2012/09/04	GENERAL TOLERANCES (UNLESS SPECIFIED)		DIMENSION STYLE	SCALE	DESIGN UNITS	THIRD ANGLE PROJECTION	
			MM ONLY	20:1	METRIC		
	10 UNDER	±0.2	DRAWN BY	DATE	TITLE 1.5 WIRE TO BOARD CONN. REC CRIMP TERMINAL (AWG #24 - 28)		
	10 OVER 30 UNDER	±0.25	THANYU	2012/03/29			
30 OVER	±0.3	CHECKED BY	DATE				
		APPROVED BY	DATE	MATERIAL NO. SEE CHART			
		YOITO	2012/09/04				
ANGULAR ±3 ° DRAFT WHERE APPLICABLE MUST REMAIN WITHIN DIMENSIONS		MATERIAL NO.		DOCUMENT NO.	SHEET NO. 1 OF 1		
		SIZE A3		THIS DRAWING CONTAINS INFORMATION THAT IS PROPRIETARY TO MOLEX INCORPORATED AND SHOULD NOT BE USED WITHOUT WRITTEN PERMISSION			