

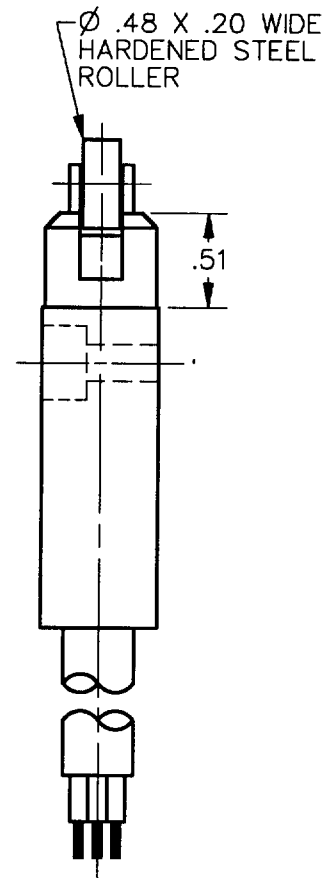
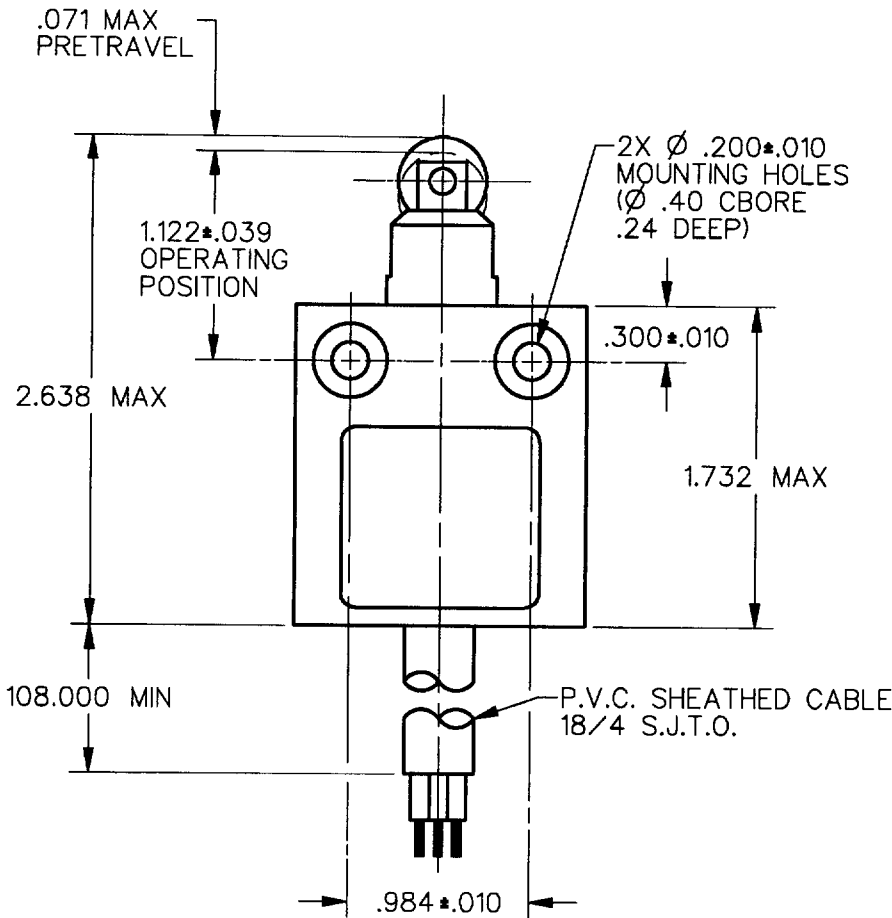
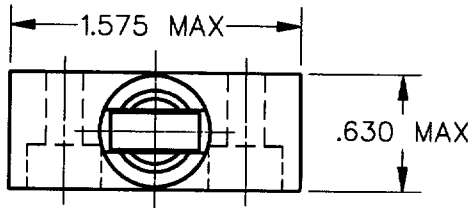
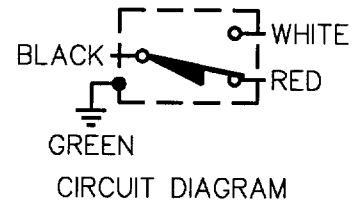
MICRO SWITCH
a Honeywell Division

FED. MFG. CODE 91929

**MINIATURE PRECISION
LIMIT SWITCH**

CATALOG LISTING

914CE2-9

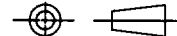




NOTES
1 - ZINC HOUSING FINISHED WITH GRAY PAINT

ANSI Y14.5M-1982 APPLIES

THIS DRAWING COVERS A PROPRIETARY ITEM AND IS THE PROPERTY OF MICRO SWITCH, A DIVISION OF HONEYWELL. THIS DRAWING IS NOT TO BE COPIED OR USED WITHOUT THE APPROVAL OF MICRO SWITCH.

THIRD ANGLE PROJECTION



CHARACTERISTICS	ELECTRICAL DATA	SCALE FULL	DO NOT SCALE PRINT
OPERATING FORCE ——— 2.7 LB MAX	CONTACT ARRANGEMENT S P D T	UNLESS OTHERWISE SPECIFIED TOLERANCES ARE	
RELEASE FORCE ——— 1.0 LB MIN		ONE PLACE (.0) ±.030	
DIFFERENTIAL TRAVEL ——— .004 MAX	5A - 250 VAC 1/10HP - 125 OR 250 VAC	TWO PLACE (.00) ±.015	
OVERTRAVEL ——— .118 MIN		THREE PLACE (.000) ±.005	
	 	ANGLES ±	
		WEIGHT	

914CE2-9
M
 DRAWING NUMBER
5
 ISSUE
 REVISIONS
 A CO-69061
 S A V 31 AUG 91
 CHECK
 CHECK
 13 NOV 91
 DRAW
 CHECK
 3 SEPT 91
 DDM/CAD
 DRAWN

REPLACES
 RELEASE NO. PR-3304
 CHECK
 CHECK
 13 NOV 91
 DRAW
 CHECK
 3 SEPT 91