

# MICRO SWITCH

A DIVISION OF MINNEAPOLIS-HONEYWELL REGULATOR COMPANY  
FREDPORT, MINNESOTA

FED. MFR. CODE 91929

# ACTUATOR - SWITCH

CATALOG LISTING

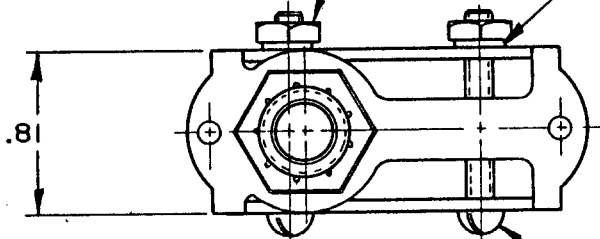
MC7711

ARMY-NAVY PART NO. AN3167-1

(M)MC7711  
ISSUE 8

6-32 NC ST'D HEX NUT 1  
(AN 340-6)(2)

LOCKWASHER  
(AN936-A6)(2)



6-32 NC X 1.000 REF ROUND HEAD  
MACHINE SCREW  
(AN515-6-16)(2)

.917±.010  
.47 R  
.31 DIA

15/32-32 NS THREAD TO WITHIN .094 OF  
SHOULDER

2.781 MAX  
FREE  
POSITION

2.719±.045  
OPERATING  
POSITION

HEX NUT .56 ACROSS FLATS X .08 THICK (2)

LOCKNUT .62 ACROSS FLATS X .09 THICK (2)

1.69

.56 DIA SHOULDER

(B)

.95

.81

.06

DOTTED LINES INDICATE  
BASIC SWITCH IN PLACE

1.000 REF .53

2.07

NOTE -

FURNISHED UNASSEMBLED

2 - ACTUATOR WILL PERFORM SATISFACTORILY IN TEMPERATURES TO MINUS 65° F

THIS DRAWING COVERS A PROPRIETARY ITEM AND IS THE PROPERTY OF MICRO SWITCH, A DIVISION OF MINNEAPOLIS-HONEYWELL REGULATOR CO. THIS DRAWING IS NOT TO BE COPIED OR USED WITHOUT THE APPROVAL OF MICRO SWITCH.

## CHARACTERISTICS

FULL OVERTRAVEL FORCE --- 5 1/2 LB MAX  
OVERTRAVEL ----- .812 MIN

## ELECTRICAL DATA

CONTACT ARRANGEMENT

BREAK DISTANCE

## SCALE FULL

DO NOT SCALE PRINT

UNLESS OTHERWISE  
SPECIFIED

DIMENSIONS ARE IN INCHES

**TOLERANCES ARE:**

ONE PLACE	(.0)	±.030
TWO PLACE	(.00)	±.015
THREE PLACE	(.000)	±.008
ANGLES		±

WEIGHT

MC7711

M

DRAWING  
NUMBER

ISSUE

11

REPLACES

RELEASE NO.

CHECK

### REVISIONS

A	CO14866	OMW	20 SEP 60
B	CO16924	OMW	10 APR 62
C	CO79303	SAD	4 MAR 95

CHECK

60

SEP 60

CHECK

60

SEP

20

SEP

60

FO-50378

DRAWN

DAW 26 SEP 60