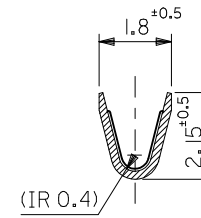
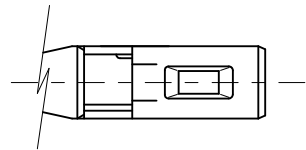
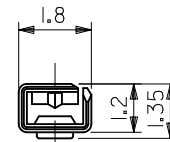
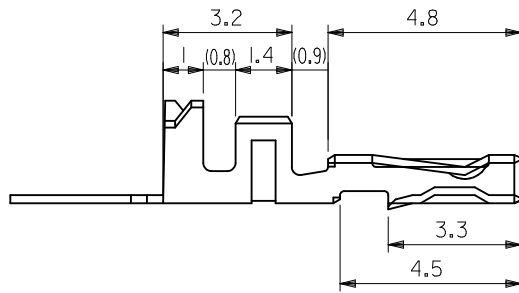


断面 A-A
SECT.A-A



断面 B-B
SECT.B-B



注記
NOTICE

- 適合ハウジングアッセンブリ:
52117-02**
52117-03**
52117-04**
- APPLICABLE HOUSING ASSEMBLY:
52117-02**
52117-03**
52117-04**
- 嵌合相手: 50038-8*00
- MATE: 50038-8*00

50039-8100	バラ状 LOOSE
50039-8000	連鎖状 CHAIN
MATERIAL NO.	形状 FORM

材料 MATERIAL	リン青銅 錫メッキ (+0.2) PHOSPHOR BRONZE TIN PLATING(+0.2)
適用電線範囲 WIRE RANGE	AVS-0.3/0.3F AVSS-0.3/0.3F CAVS-0.3 ISO-0.5 AVSS-0.5/0.5F CAVS-0.5 AWG #22/#20
被覆外径 INS. RANGE	φ1.4-1.9

REVISED EC NO: JTR2012-0084 DRWNS:ANDO 2012/02/29 CHKD:SANDO 2012/03/02 APPR:MIYAMOTO 2012/03/16 REV D1	GENERAL TOLERANCES (UNLESS SPECIFIED)	DIMENSION STYLE MM ONLY	SCALE 8:1	DESIGN UNITS METRIC	THIRD ANGLE PROJECTION
	10 UNDER ±0.2	DRAWN BY M. ASAOKA	DATE 1996/06/10	TITLE 2.5 WATERPROOF CONN CRIMP REC	
	10 OVER 30 UNDER ±0.25	CHECKED BY M. SAKANO	DATE 1996/06/10	MOLEX INCORPORATED	
	30 OVER ±0.3	APPROVED BY MENOMOTO	DATE 1996/06/10	DOCUMENT NO. SD-50039-001	SHEET NO. 1 OF 1
ANGULAR ±3°	DRAFT WHERE APPLICABLE MUST REMAIN WITHIN DIMENSIONS	MATERIAL NO. SEE CHART	THIS DRAWING CONTAINS INFORMATION THAT IS PROPRIETARY TO MOLEX INCORPORATED AND SHOULD NOT BE USED WITHOUT WRITTEN PERMISSION		