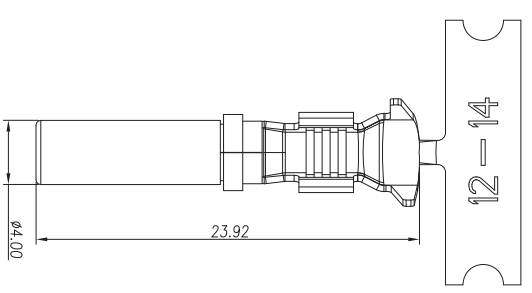
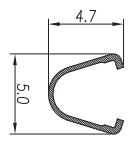
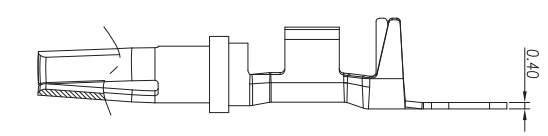
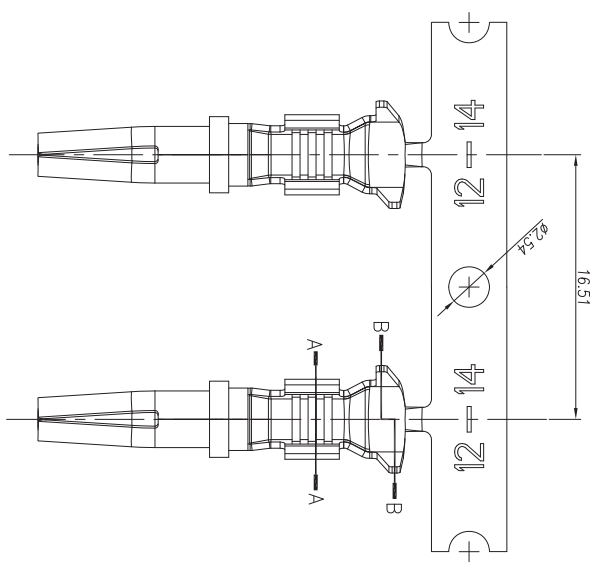
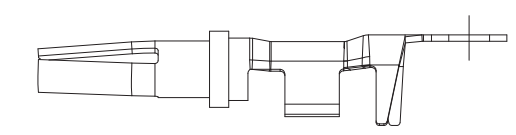


| REV ZONE | | ECO | | DESCRIPTION | | RELEASE NUMBER | | DATE | | BY | | APPR | |
|----------|----|-----|----|-------------|--|----------------|--|------|----|----|----|------|----|
| AT | -- | -- | -- | | | 02/07/12 | | -- | -- | -- | -- | -- | -- |

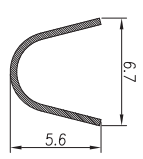
| REV ZONE | | ECO | | DESCRIPTION | | RELEASE NUMBER | | DATE | | BY | | APPR | |
|----------|----|-----|----|-------------|--|----------------|--|------|----|----|----|------|----|
| AT | -- | -- | -- | | | 02/07/12 | | -- | -- | -- | -- | -- | -- |



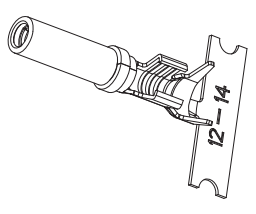
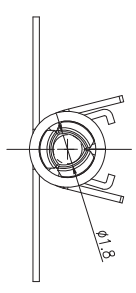
成品组装图
(Finished product drawing)



SECTION A-A



SECTION B-B



- 注 (NOTES):
1. 材料 Material:
铜合金 copper alloy
 2. 表面处理Plating
**=66 镀锡/镍Plating is tin/nickel.
**=44 镀金Plating is gold Flash
 3. 性能参数 Specification:
3.1 额定电流Rating current: 23A
3.2 接触电阻Contact resistance: 5mΩ
 4. 包装package:
一卷包含2000PCS端子
2000pcs/reel
 5. 可互配的线缆范围Available wire range: 12~14AWG

安费诺精密连接器(深圳)有限公司
Amphenol PCD Shenzhen

受控文件

2012年 06月 21日

| ITEM | PART NUMBER | Qty | DESCRIPTION | REMARK |
|--|-------------|-----|-------------|--------|
| UNLESS OTHERWISE SPECIFIED | | | | |
| 1) All dimensions are in metric(mm). | | | | |
| 2) Tolerances are as follows: | | | | |
| 1 Pl. DEC +0.30 | | | | |
| 2 Pl. DEC +0.15 | | | | |
| 3 Pl. DEC +0.08 | | | | |
| Fractions ±1/64 | | | | |
| Angles ±1° | | | | |
| SIGNATURE | | | | |
| DATE | | | | |
| DRAWN | | | | |
| CHECKED | | | | |
| DATE | | | | |
| ENGINEER | | | | |
| APPROVAL | | | | |
| CUSTOMER | | | | |
| MATERIALS LIST | | | | |
| PROCESS SPECIFICATIONS: | | | | |
| THIS DRAWING IS SUPPLIED FOR INFORMATION ONLY. DESIGN FEATURES, SPECIFICATIONS AND PERFORMANCE DATA SHOWN HEREON ARE THE PROPERTY OF THE AMPHENOL CORPORATION. NO RIGHTS OF REPRODUCTION ARE IMPLIED. ALL DIMENSIONS ARE SUBJECT TO NORMAL MANUFACTURING VARIATIONS. | | | | |
| SOCKET CONTACT STAMPED SIZE 12.12-14AWG | | | | |
| DWG NO: A162-12-01** | | | | |
| SINE Systems Corporation | | | | |
| A Subsidiary of Amphenol Corporation | | | | |
| THIRD ANGLE PROJECTION | | | | |
| FILE NO. | | | | |
| SIZE | | | | |
| MASS | | | | |
| REV. | | | | |
| SCALE | | | | |
| SHEET 1 OF 1 | | | | |
| NEXT ASS'Y | | | | |