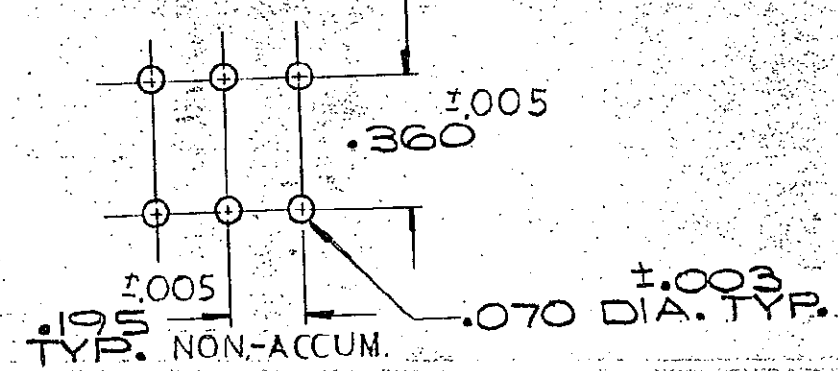
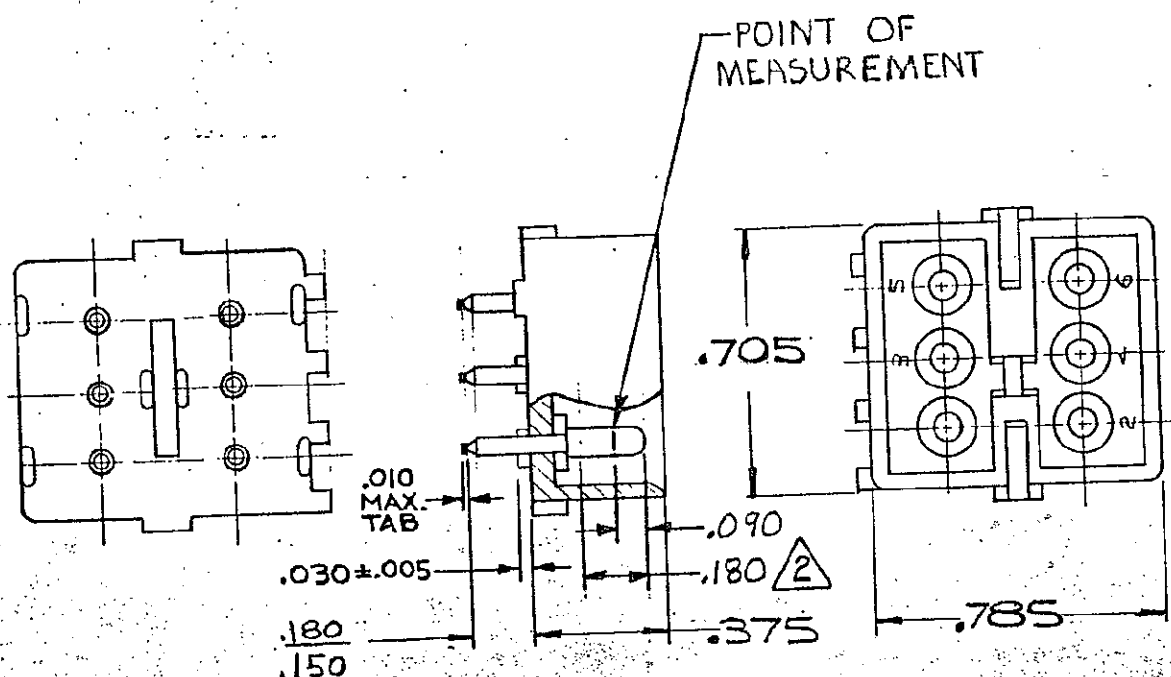


1. PARTS COMPLY WITH TE SOLDERABILITY SPEC. NO. 109-11-3  
 2. CONTACT IS PLATED OVERALL WITH .000050 NICKEL, THEN .000030 GOLD OVER CONTACT LENGTH INDICATED AND TIN PLATED ON SOLDER TAIL END.



RECOMMENDED LAYOUT FOR .062 THICK P.C. BOARD

ASSEMBLY NO.	HSG. MATL.	COLOR	PIN MATL.	FINISH
2 - 380999-0	NYLON	NATURAL	COPPER ALLOY	GOLD
1 - 380999-0	NYLON	NATURAL	COPPER ALLOY	PRE-TIN

DIMENSIONS IN INCHES. DO NOT SCALE PRINT.

REVISION RECORD		DR	CHK	DATE	NUMBER <b>380999</b>	REQUIRED PER ASSEMBLY DESCRIPTION	DWG SIZE	NUMBER	NAME	REMARKS	ITEM NO.	
U2	REVISED PER ECR-13-008342	AV	RP	12NOV 13			DR	CHK	DATE	MATERIAL AND FINISH		CUSTOMER COPY REFERENCE ONLY
U1	REVISED PER ECO-11-005294	RK	HMR	12APR 11	DR	CHK	DATE	SEE TABLE		TE Connectivity		
					DE	APP	DATE	WIRE - RANGE - INSULATION		CLASS		
					TOLERANCE EXCEPT AS NOTED		SCALE	LOC	NO	TYPE		
					± .015 ± 1° 0'		1/1	CM	B	380999	PIN HEADER	U2
					NAME		6 CIRCUIT MATE-N-LOK P.C. BOARD HEADER					