

MECHANICAL DETAILS

Shell Style Model PK* : Fixed receptacle with two nuts (back panel mounting)

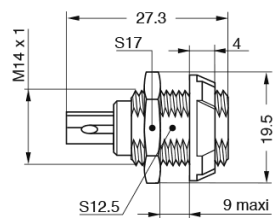
Keying 2 keys (beta=170; plug: female contacts, receptacle: male contacts)

Housing Material PSU (Polysulfone), gray

Cable Fixing 0 - 0 mm

Variant 2 G : Gray front nut

	Col	Col	Col	Col	Col	Col	Col	Col
Mm.								
In.								



Available Download

 [P_series_catalog.pdf](#)

PERFORMANCE DETAIL

Insert 1P.N03 : 3 High Voltage

Insulator

Specifications

Note: Increased creepage distance, pin 3 longer

Contact Type: Solder

Max. Matings: 2000

Contact Dia.: 0.9 mm (0.04in)

Bucket Dia.: 1.4 mm (0.055in)

Max. Solid 1 mm² (AWG 18)

Max. Stranded 1 mm² (AWG 18)

R (max): 4.5 mOhm

Cable type: |A|H07



OTHER CHARACTERISTICS

Shell Style/Model Libellé







F ret (min): 50 N

F ret (max): 150 N

IP Rating 50



Related links

-  [Contact](#)
-  [Quote Request](#)
-  [Catalogs Downloads](#)
-  [Catalogs Requests](#)
-  [Sample Request](#)
-  [3D drawings](#)