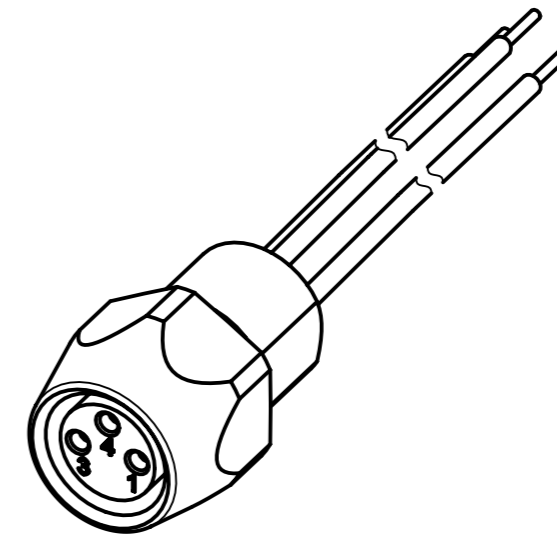


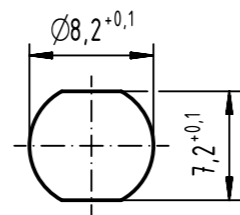
Loading-Plan:

- 1 — brown
- 3 — blue
- 4 — black

For Information Only
-won't be replaced when changed-



Recommended panel cut-out



Minimum wall thickness 1.5mm

- Protection level: IP67
- Temperature range: -30°C ... +80°C

				All rights reserved Department EC PD - RO		All Dimensions in mm Original Size DIN A3		Scale 2:1 Free size tol.		Ref. Sub.	
				HARTING Electronics GmbH D-32339 Espelkamp		Created by TAMAS Inspected by Standardisation		Date 2014-06-18 State Checked Out		Doc-Key / ECM-Nr. 100580396/UGD/009/A	
				Title M8 Cable Assembly Type TB Number 210235763XX						Rev. A Page 1/1	
1	21023576305	AWG 24, PVC		0.5							
Cont. No.	Part - no.	Type of cable		Dim. a[m]							