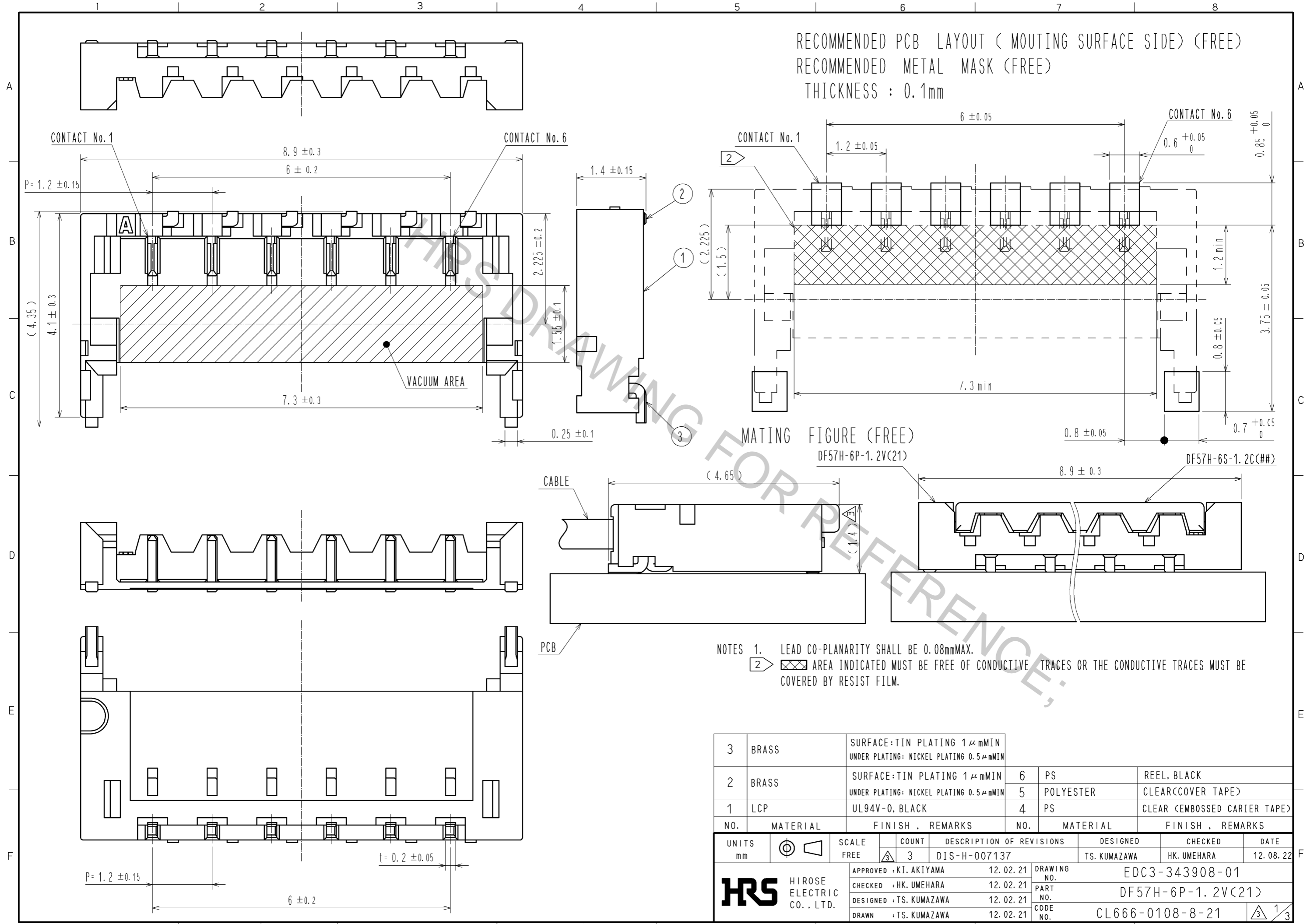


Aug.1.2016 Copyright 2016 HIROSE ELECTRIC CO., LTD. All Rights Reserved.



RECOMMENDED PCB LAYOUT (MOUNTING SURFACE SIDE) (FREE)
 RECOMMENDED METAL MASK (FREE)
 THICKNESS : 0.1mm

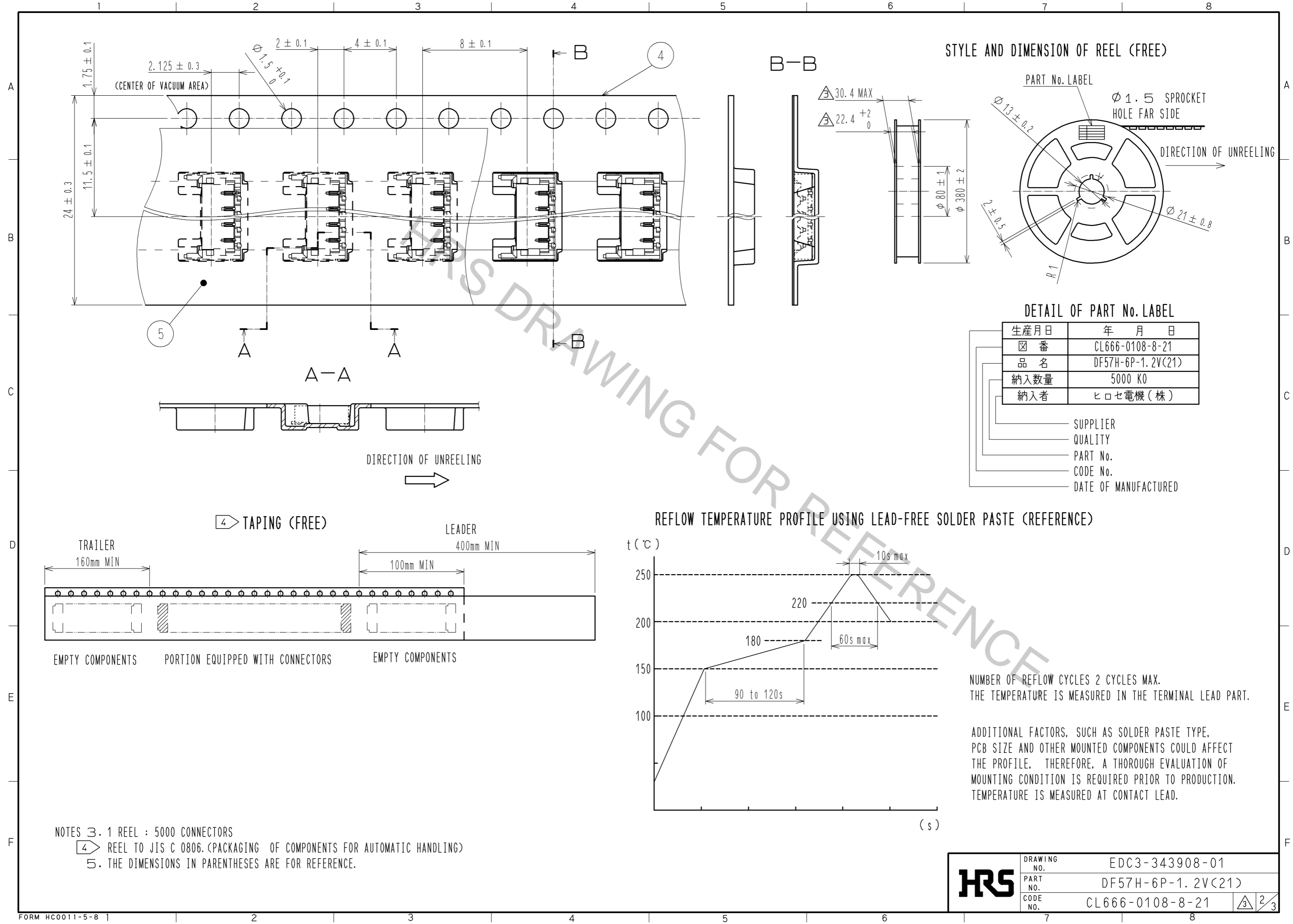
MATING FIGURE (FREE)
 DF57H-6P-1.2V(21)

DF57H-6S-1.2C(##)

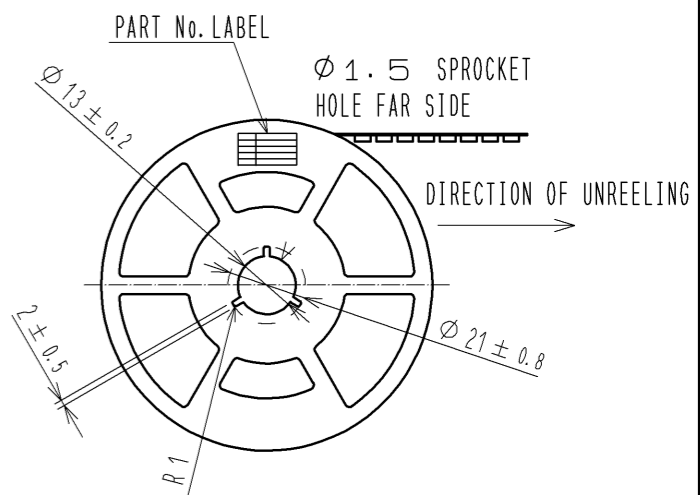
- NOTES 1. LEAD CO-PLANARITY SHALL BE 0.08mmMAX.
 2. AREA INDICATED MUST BE FREE OF CONDUCTIVE TRACES OR THE CONDUCTIVE TRACES MUST BE COVERED BY RESIST FILM.

3	BRASS	SURFACE:TIN PLATING 1μmMIN UNDER PLATING: NICKEL PLATING 0.5μmMIN			
2	BRASS	SURFACE:TIN PLATING 1μmMIN UNDER PLATING: NICKEL PLATING 0.5μmMIN	6	PS	REEL, BLACK
1	LCP	UL94V-0, BLACK	5	POLYESTER	CLEAR(COVER TAPE)
			4	PS	CLEAR (EMBOSSED CARRIER TAPE)
NO.	MATERIAL	FINISH, REMARKS	NO.	MATERIAL	FINISH, REMARKS
UNITS		SCALE	COUNT	DESCRIPTION OF REVISIONS	
mm		FREE	3	DESIGNED	CHECKED
			DIS-H-007137	TS. KUMAZAWA	HK. UMEHARA
			APPROVED : KI. AKIYAMA	12.02.21	DATE
			CHECKED : HK. UMEHARA	12.02.21	12.08.22
			DESIGNED : TS. KUMAZAWA	12.02.21	
			DRAWN : TS. KUMAZAWA	12.02.21	
DRAWING NO.			EDC3-343908-01		
PART NO.			DF57H-6P-1.2V(21)		
CODE NO.			CL666-0108-8-21		
			1/3		

Aug.1.2016 Copyright 2016 HIROSE ELECTRIC CO., LTD. All Rights Reserved.



STYLE AND DIMENSION OF REEL (FREE)

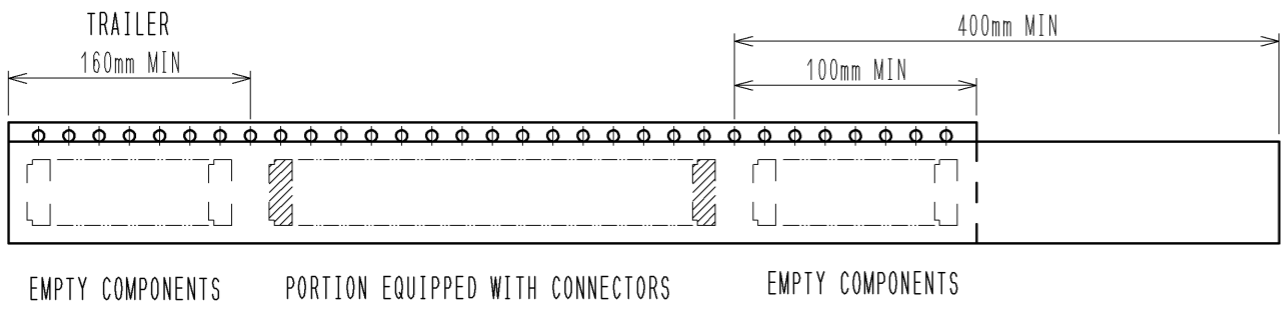


DETAIL OF PART No. LABEL

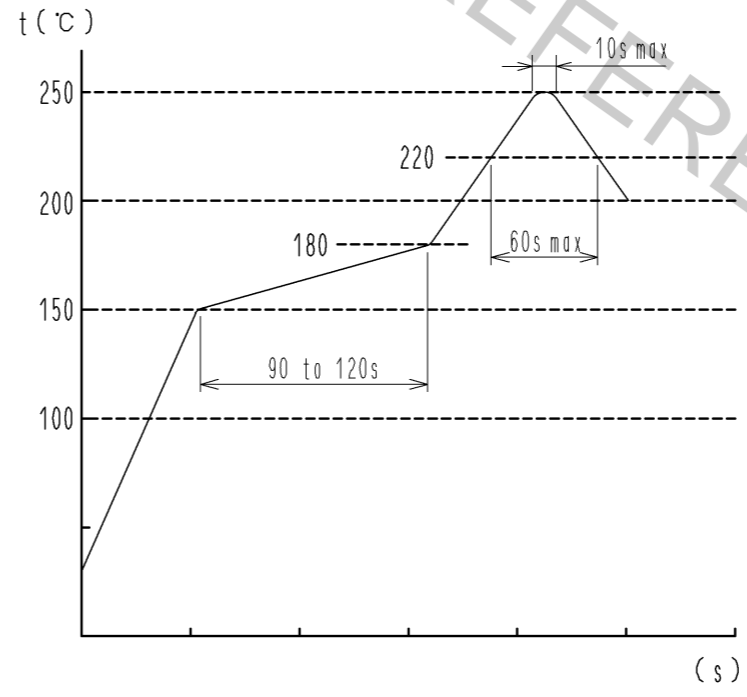
生産月日	年 月 日
図 番	CL666-0108-8-21
品 名	DF57H-6P-1.2V(21)
納入数量	5000 KO
納入者	ヒロセ電機(株)

- SUPPLIER
- QUALITY
- PART No.
- CODE No.
- DATE OF MANUFACTURED

4 TAPING (FREE)



REFLOW TEMPERATURE PROFILE USING LEAD-FREE SOLDER PASTE (REFERENCE)



NUMBER OF REFLOW CYCLES 2 CYCLES MAX.
THE TEMPERATURE IS MEASURED IN THE TERMINAL LEAD PART.

ADDITIONAL FACTORS, SUCH AS SOLDER PASTE TYPE, PCB SIZE AND OTHER MOUNTED COMPONENTS COULD AFFECT THE PROFILE. THEREFORE, A THOROUGH EVALUATION OF MOUNTING CONDITION IS REQUIRED PRIOR TO PRODUCTION. TEMPERATURE IS MEASURED AT CONTACT LEAD.

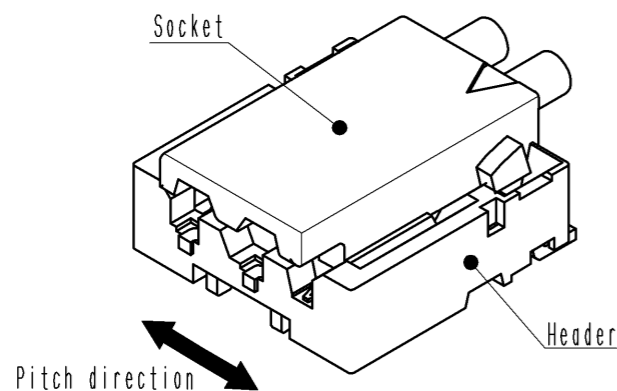
- NOTES
3. 1 REEL : 5000 CONNECTORS
 4. REEL TO JIS C 0806. (PACKAGING OF COMPONENTS FOR AUTOMATIC HANDLING)
 5. THE DIMENSIONS IN PARENTHESES ARE FOR REFERENCE.

HRS	DRAWING NO.	EDC3-343908-01
	PART NO.	DF57H-6P-1.2V(21)
	CODE NO.	CL666-0108-8-21
		$\frac{2}{3}$

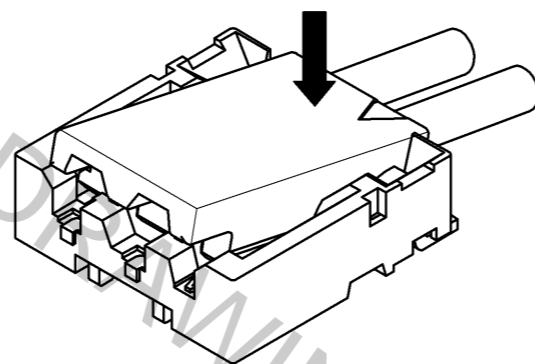
DF57 Series Mating / Unmating Operation Instruction (For DF57 series)

Mating

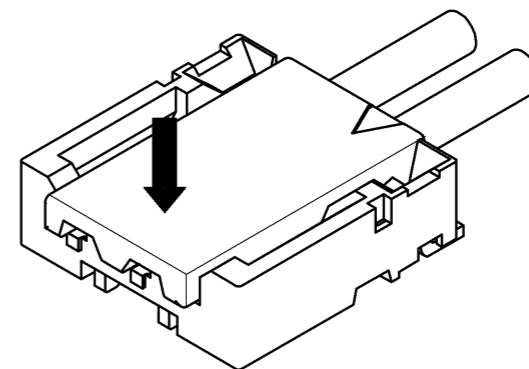
① By positioning the convexity of the socket sides to the header concavity, align the centers of the socket and the header in pitch direction.



② Slightly press the socket down at cable side to tilted angle.

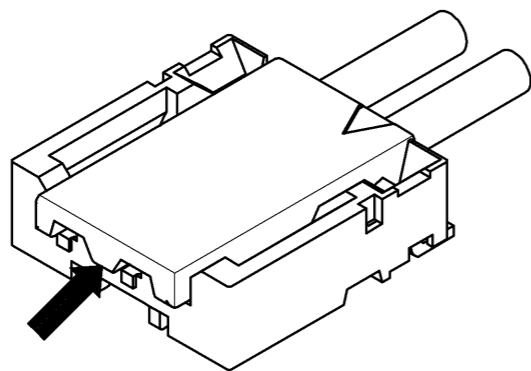


③ Press down at the lever side with stabilizing the cable side to insert. Mating completes.

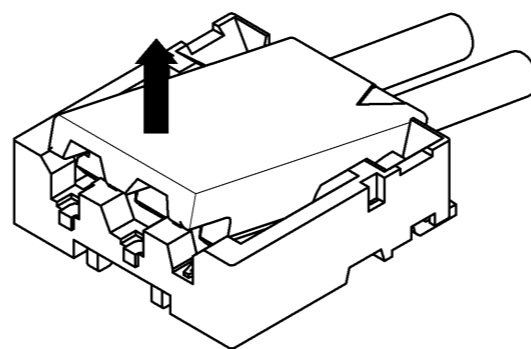


Unmating

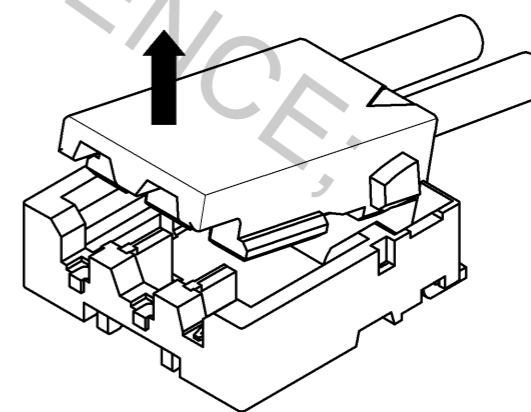
① Hook the lever with finger nail.



② Lift up to the upper direction and friction lock is released.



③ Lift up to the upper direction and positive lock is released. Removal completes.



HRS	DRAWING NO.	EDC3-343908-01
	PART NO.	DF57H-6P-1.2V(21)
	CODE NO.	CL666-0108-8-21
		3/3