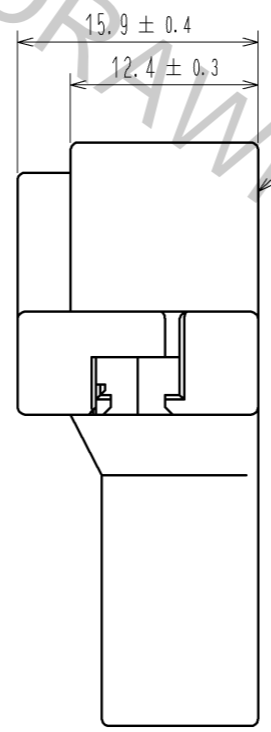
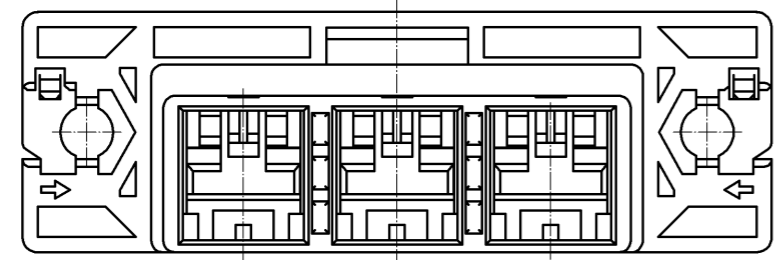
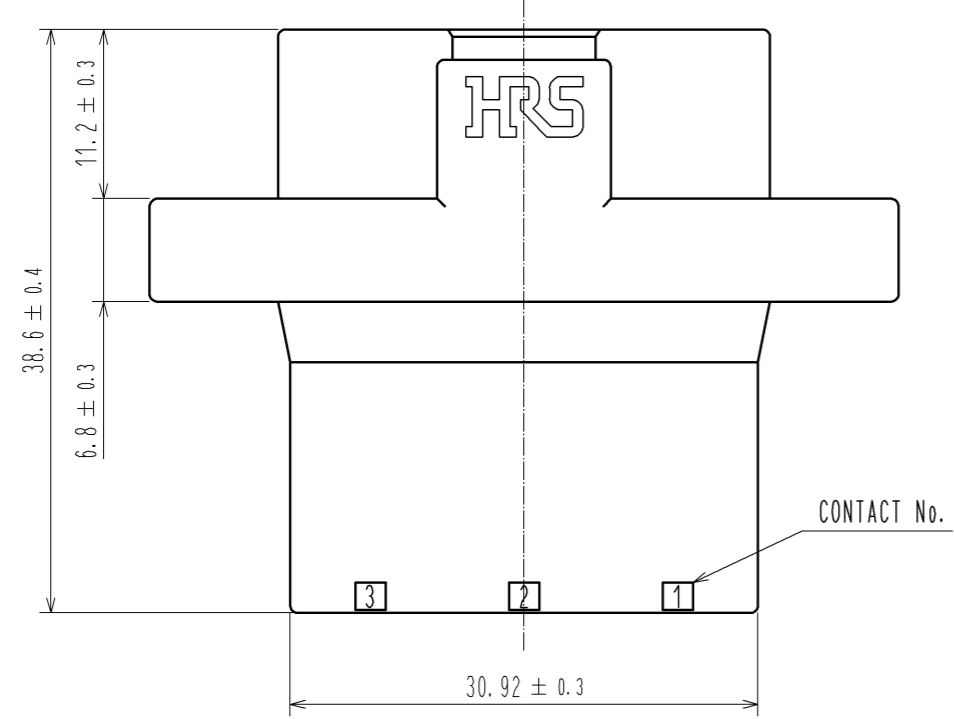
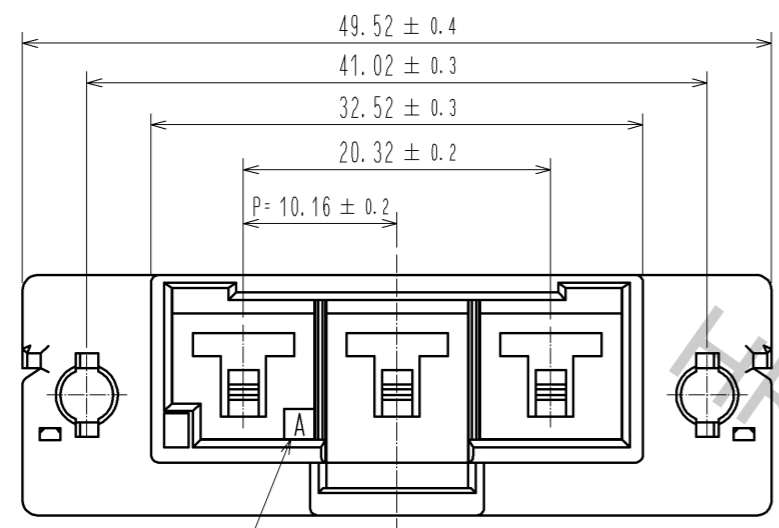
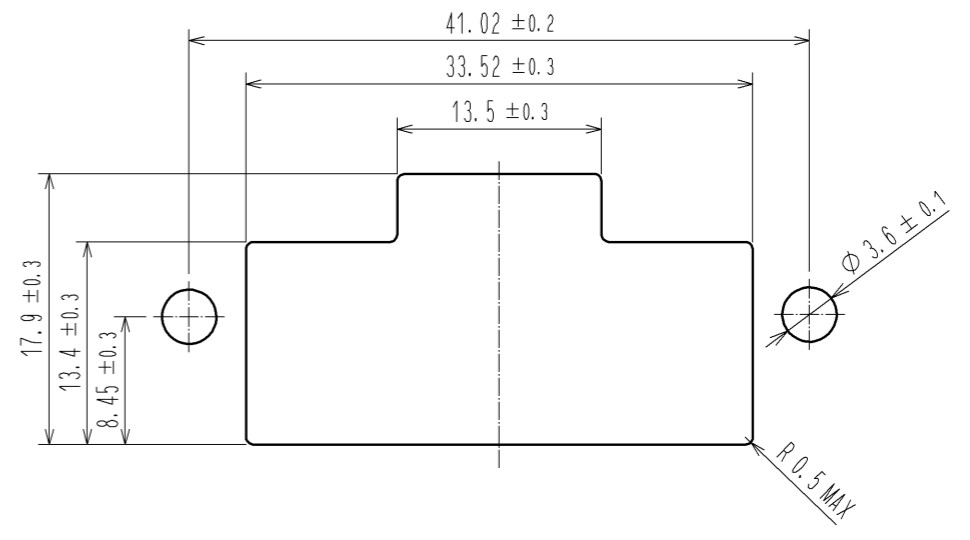


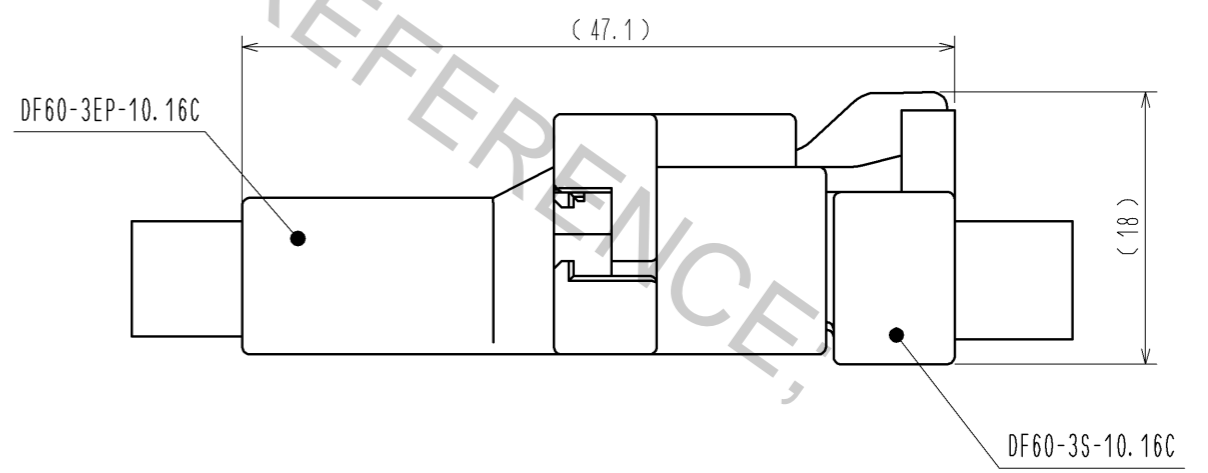
Aug.1.2016 Copyright 2016 HIROSE ELECTRIC CO., LTD. All Rights Reserved.



RECOMMENDED PANEL CUT OUT DIMENSION



MATING FIGURE

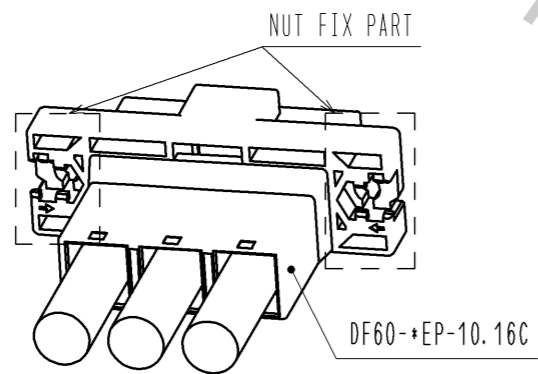


NOTE 1. PER PACK : 100 PIECES.

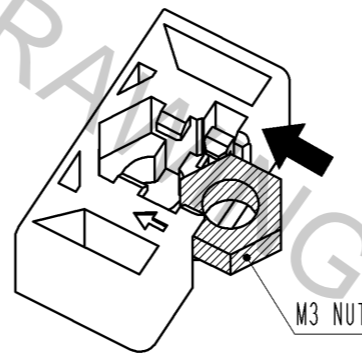
NO.	MATERIAL	FINISH . REMARKS	NO.	MATERIAL	FINISH . REMARKS
1	PBT			BLACK, UL94V-0	
UNITS		SCALE	COUNT	DESCRIPTION OF REVISIONS	
mm		2 : 1	△	DESIGNED	CHECKED
		APPROVED : KI. AKIYAMA	13.10.30	DRAWING NO. EDC3-344822-01	
HIROSE ELECTRIC CO., LTD.		CHECED : OM. MIYAMOTO	13.10.30	PART NO. DF60-3EP-10.16C	
		DESIGNED : TH. YOSHIZAWA	13.10.30	CODE NO. CL680-3026-8-00	
		DRAWN : TH. YOSHIZAWA	13.10.30	1/2	

# DF60 IN-LINE TYPE RECOMMENDED PANEL MOUNTING MANUAL (WHEN NUTS USES)

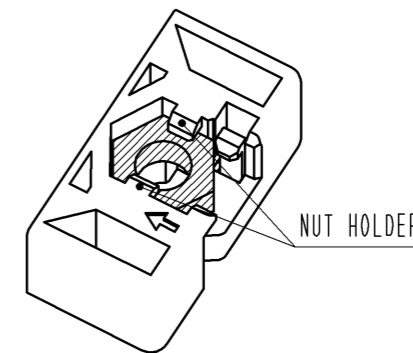
## NUT INSTALLATION PROCESS



1. SLIDE A NUT (SIZE:M3) TO NUT FIX PART.

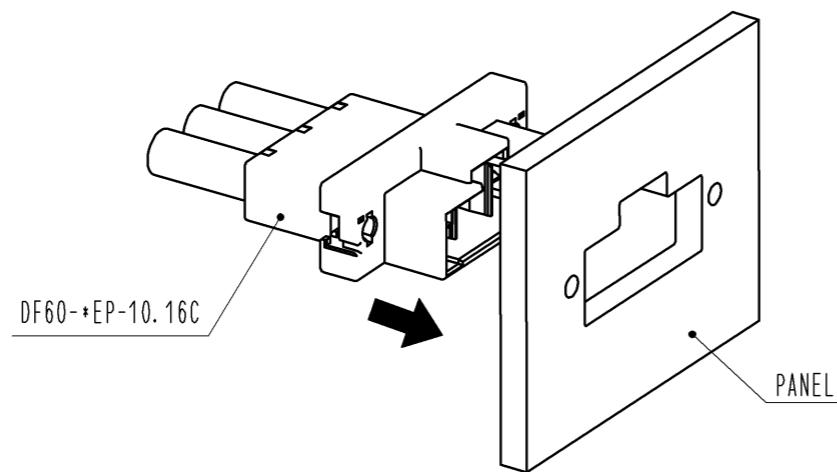


2. PRESS DOWN THE NUT UNTIL IT CLICKS, THEN THIS SOUND MEANS THE NUT HAS INSERTED INTO NUT HOLDER.

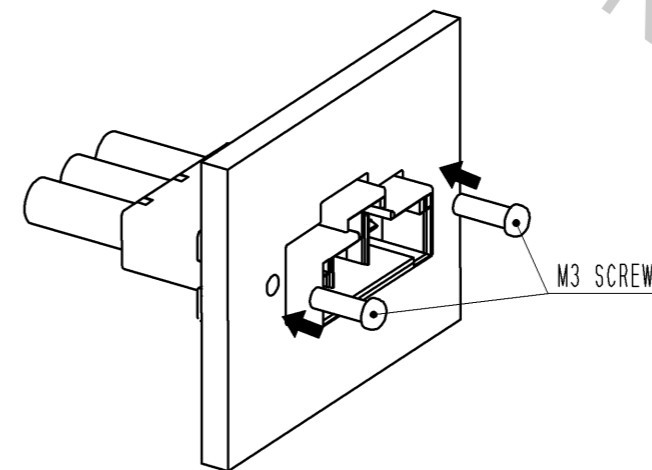


## PANEL MOUNTING PROCESS

1. INSERT CONNECTOR INTO PANEL CUT OUT PART.



2. TIGHTEN A SCREW (SIZE:M3) TO FIX WITH PANEL. RECOMMENDED TORQUE : LESS THAN 49N · cm



**HRS**

DRAWING NO.	EDC3-344822-01
PART NO.	DF60-3EP-10.16C
CODE NO.	CL680-3026-8-00

2/2