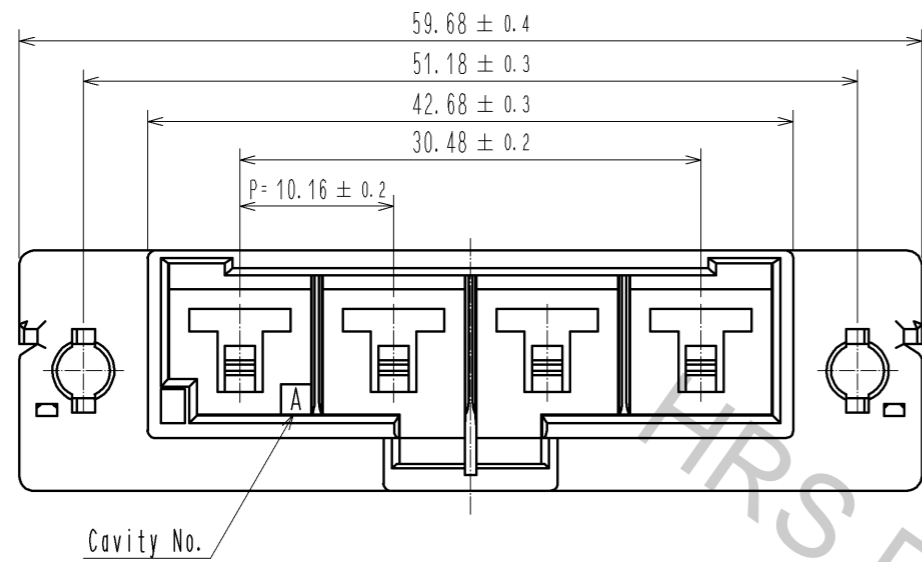
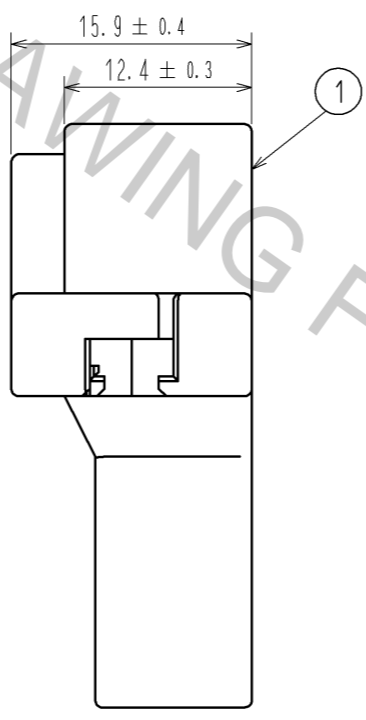
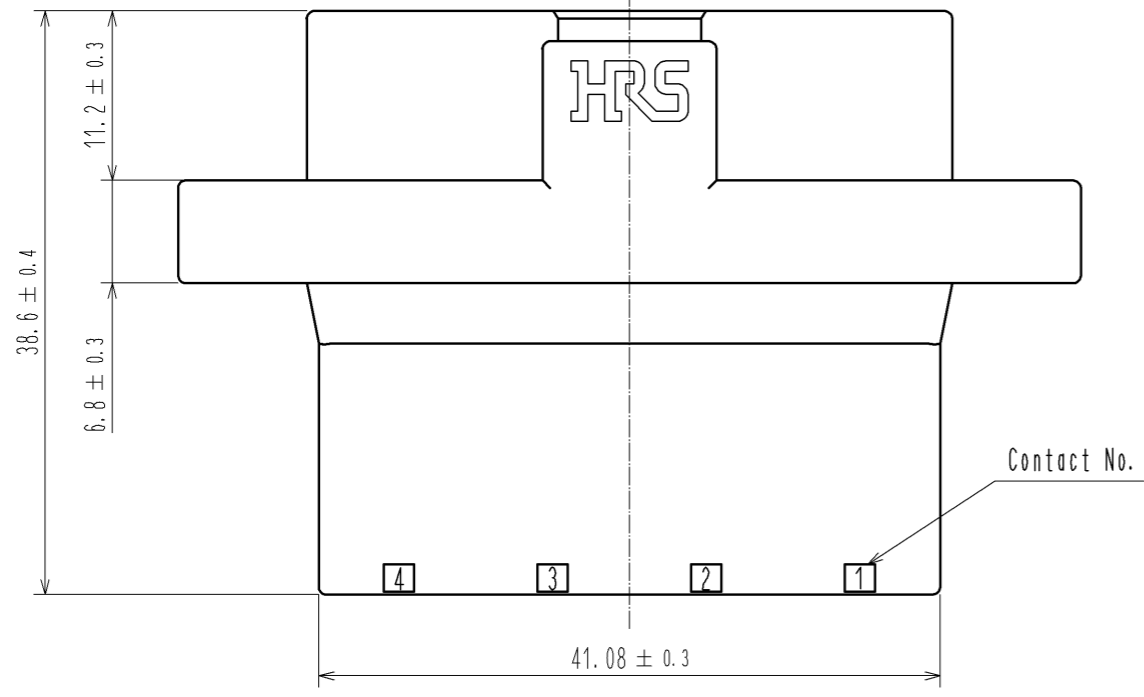
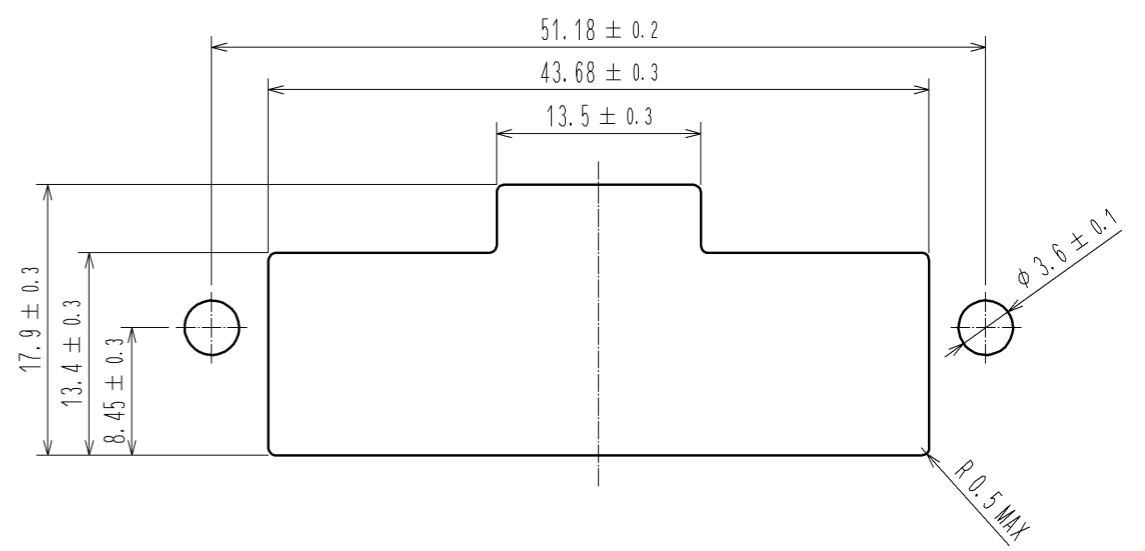


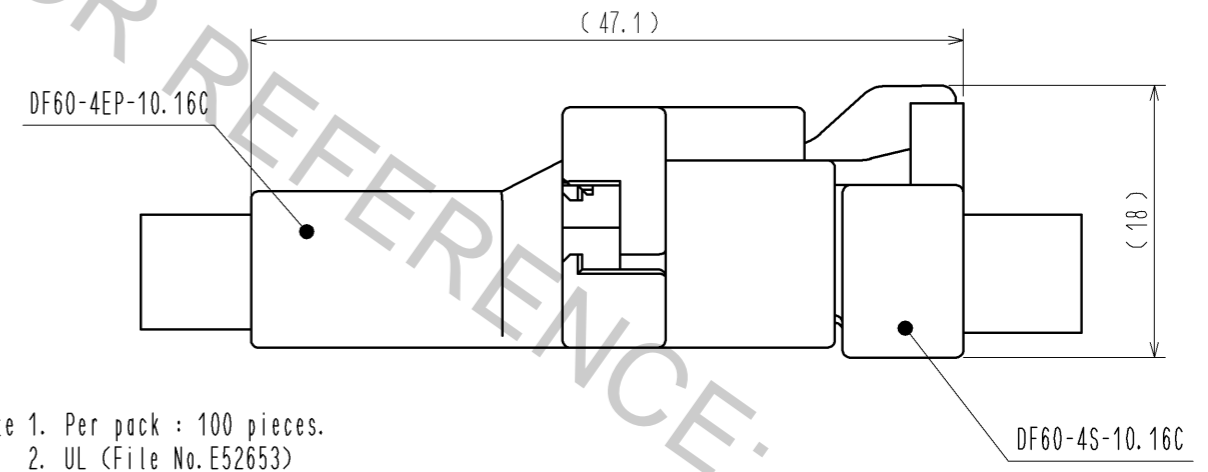
Aug.1.2016 Copyright 2016 HIROSE ELECTRIC CO., LTD. All Rights Reserved.



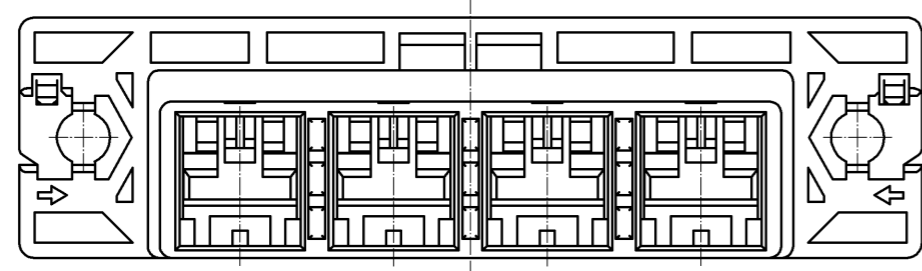
Recommended panel cut out dimension



Mating figure



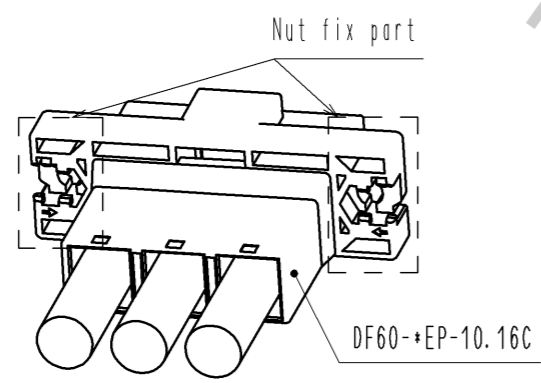
Note 1. Per pack : 100 pieces.
 2. UL (File No. E52653)
 C-UL (File No. E52653)
 TÜV (Certificate No. R50244085) authorization article.



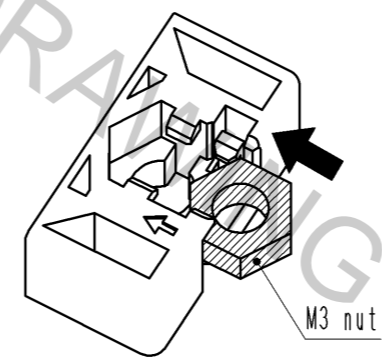
NO.	MATERIAL	FINISH	REMARKS	NO.	MATERIAL	FINISH	REMARKS	
				1	PBT		BLACK, UL94V-0	
UNITS	mm	SCALE	2 : 1	COUNT	DESCRIPTION OF REVISIONS	DESIGNED	CHECKED	DATE
HRS HIROSE ELECTRIC CO., LTD.		APPROVED	: KI. AKIYAMA	14.06.06	DRAWING NO.	EDC3-344823-01		
		CHECKED	: TS. FUKUSHIMA	14.06.06	PART NO.	DF60-4EP-10.16C		
		DESIGNED	: TS. KUMAZAWA	14.06.06	CODE NO.	CL680-3027-0-00		
		DRAWN	: TS. KUMAZAWA	14.06.06				1/2

DF60 In-Line type recommended panel mounting manual (When nuts uses)

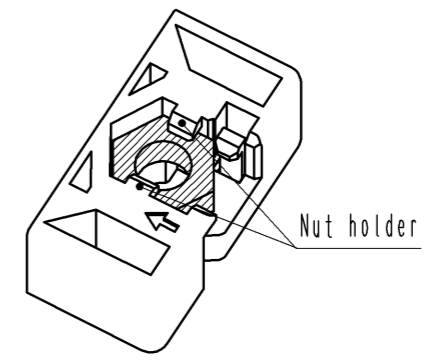
Nut installation process



1. Slide a nut (Size:M3) to nut fix part.

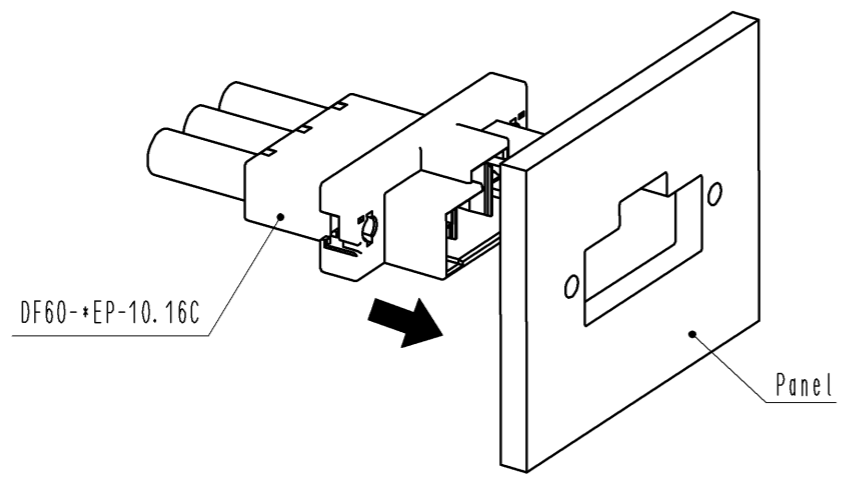


2. Press down the nut until it clicks, then this sound means the nut has inserted into nut holder.

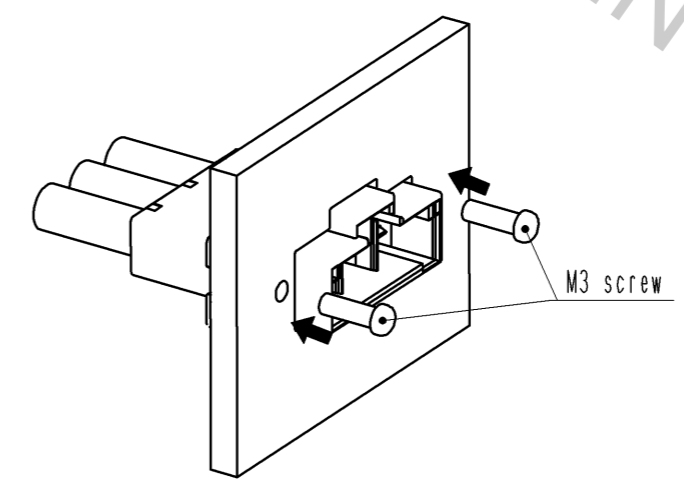


Panel mounting process

1. Insert connector into panel cut out part.



2. Tighten a screw (Size:M3) to fix with panel. recommended torque : less than 49N·cm



HRS	DRAWING NO.	EDC3-344823-01	2/2
	PART NO.	DF60-4EP-10.16C	
	CODE NO.	CL680-3027-0-00	

Aug.1.2016 Copyright 2016 HIROSE ELECTRIC CO., LTD. All Rights Reserved.