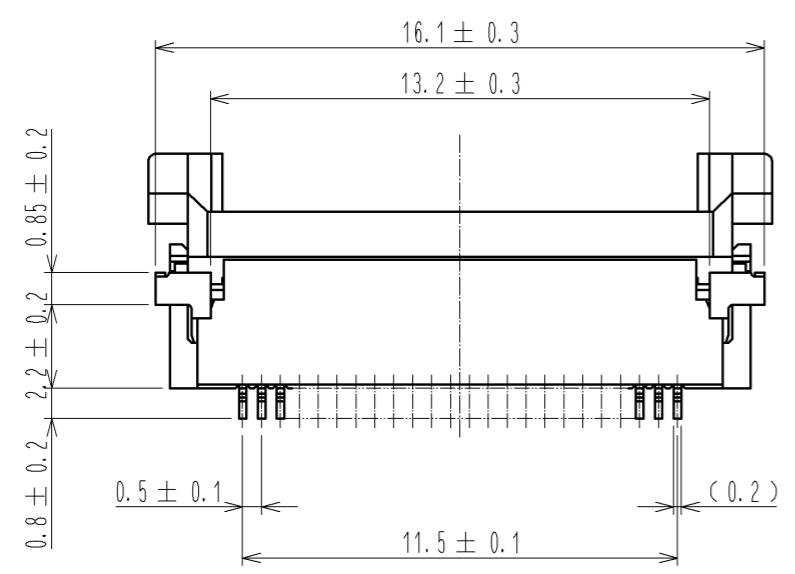
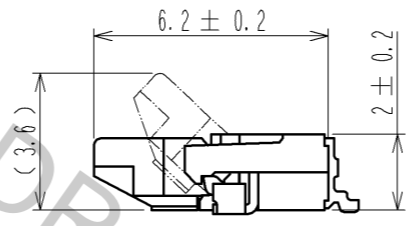
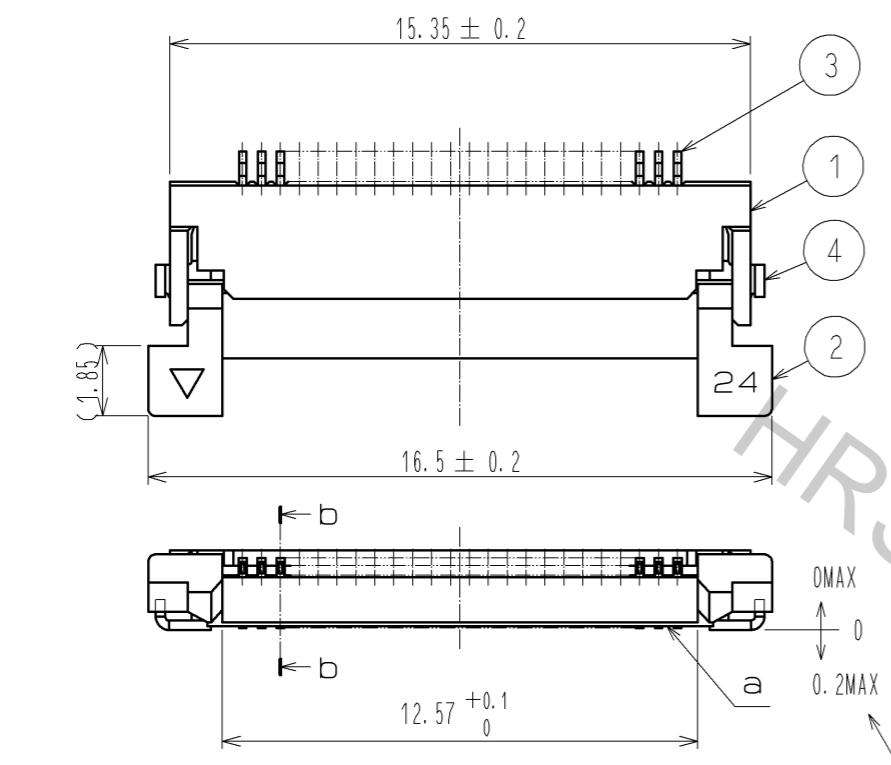
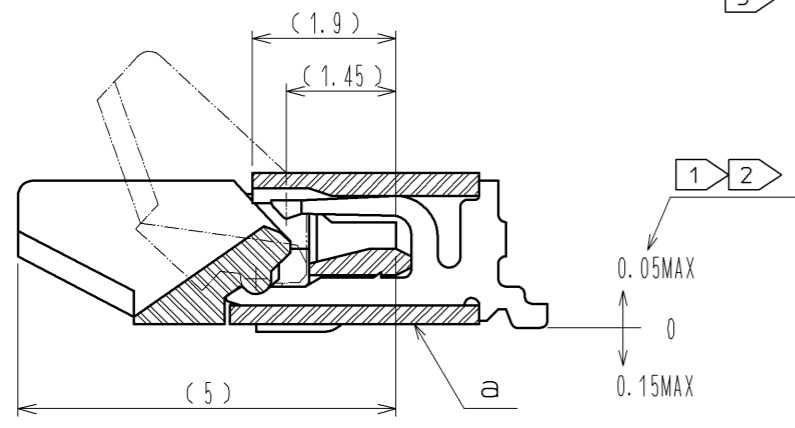


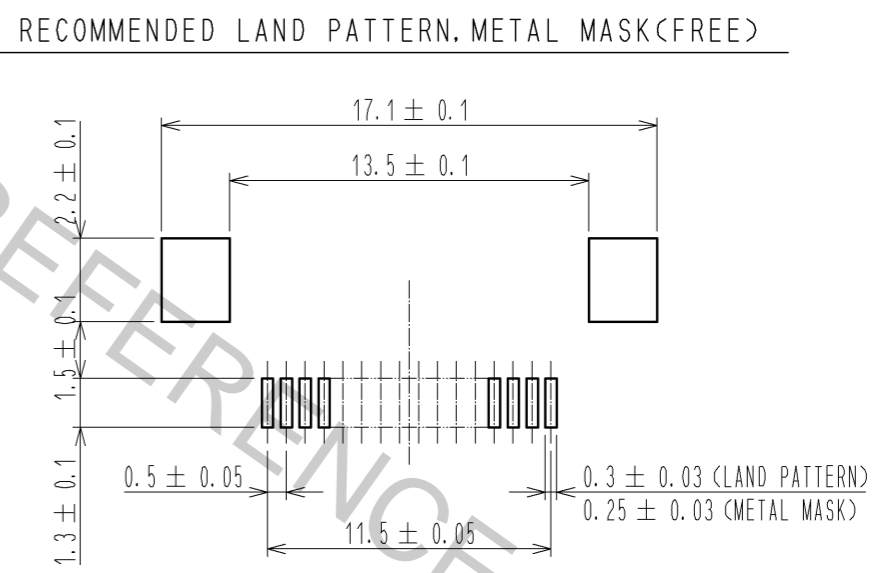
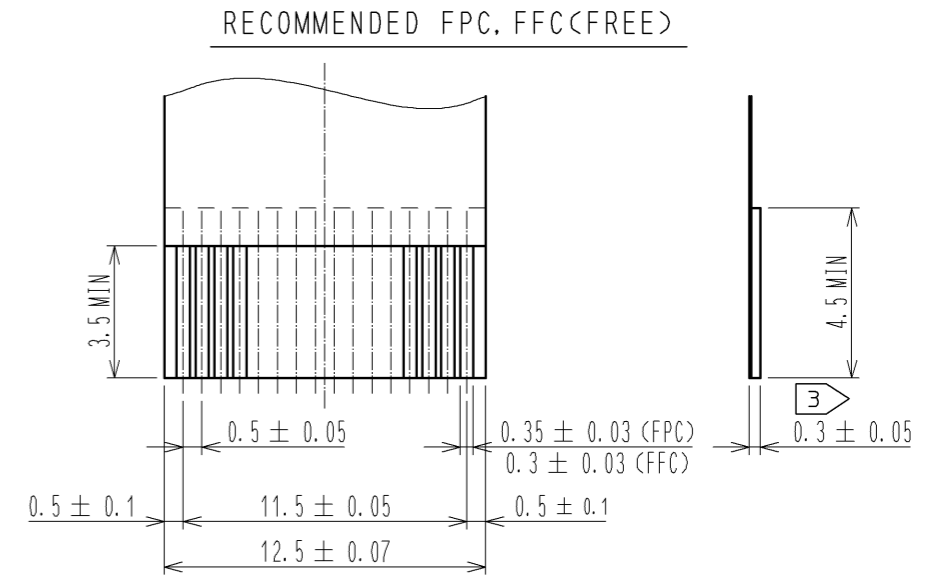
Aug.1.2016 Copyright 2016 HIROSE ELECTRIC CO., LTD. All Rights Reserved.



b-b (10 : 1)



NOTE
 ① REFERENCE IS a.
 ② LEAD CO-PLANARITY SHALL BE 0.1 MAX.
 ③ THICKNESS OF SUPPORTING TAPE SHALL BE 0.188(7.5mil) MIN.



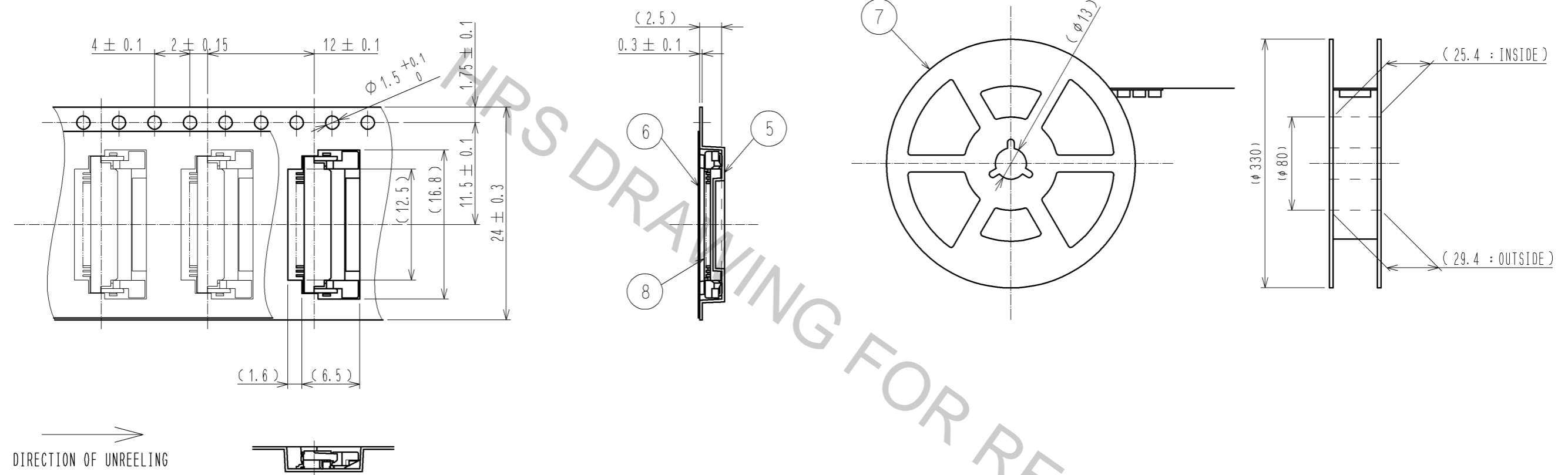
RECOMMENDED METAL MASK THICKNESS t=0.15

| 4 | BRASS | TIN PLATING 1μmMIN OVER NICKEL 1μmMIN. | 8 | (CONNECTOR) | |
|----------------------------------|-----------------|--|------------------------------|-------------|------------------|
| 3 | PHOSPHOR BRONZE | GOLD PLATING 0.05μmMIN OVER NICKEL 1μmMIN. | 7 | POLYSTYRENE | |
| 2 | PPS | DEEP BROWN UL94V-0 | 6 | POLYESTER | |
| 1 | POLYAMIDE | BEIGE UL94V-0 | 5 | POLYSTYRENE | |
| NO. | MATERIAL | FINISH . REMARKS | NO. | MATERIAL | FINISH . REMARKS |
| UNITS | mm | SCALE | 5 : 1 | COUNT | 1 |
| DESCRIPTION OF REVISIONS | | | DESIGNED | CHECKED | DATE |
| DIS-F-003410 | | | MK. YASUMI | FN. TAMURA | 09.12.11 |
| APPROVED : RI. TAKAYASU 08.09.02 | | | DRAWING NO. EDC3-150555-51 | | |
| CHECKED : HS. SAKAMOTO 08.09.01 | | | PART NO. FH12A-24S-0.5SH(55) | | |
| DESIGNED : MK. YASUMI 08.08.26 | | | CODE NO. CL586-0555-2-55 | | |
| DRAWN : MK. YASUMI 08.08.26 | | | 1/2 | | |

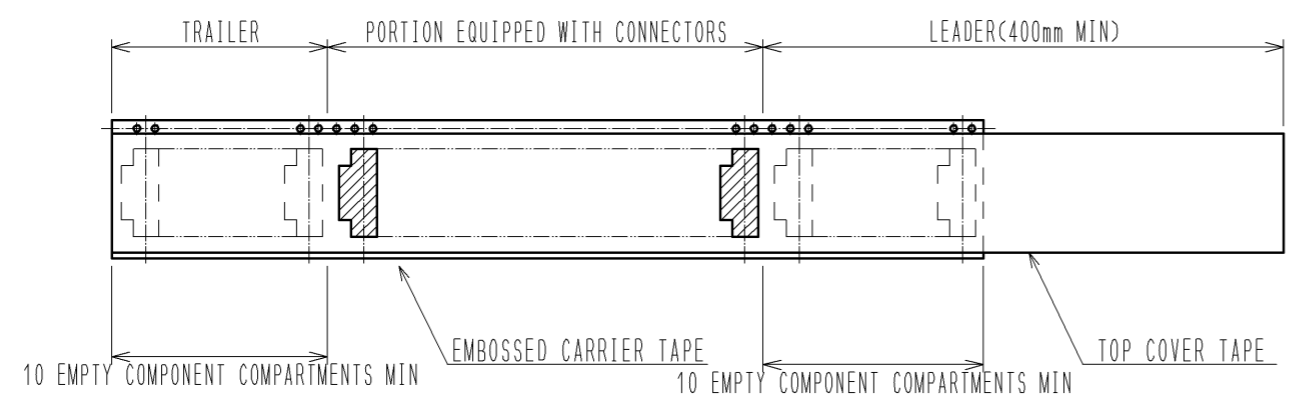
Aug.1.2016 Copyright 2016 HIROSE ELECTRIC CO., LTD. All Rights Reserved.

EMBOSSED CARRIER TAPE DIMENSION(2:1)

REEL DIMENSION(FREE)



→
DIRECTION OF UNREELING



NOTE 4 THE DIMENSIONS IN PARENTHESES ARE FOR REFERENCE.
5 1 REEL:2000 CONNECTORS.

<DRAWING FOR PACKING>

| | | |
|------------|-------------|---------------------|
| HRS | DRAWING NO. | EDC3-150555-51 |
| | PART NO. | FH12A-24S-0.5SH(55) |
| | CODE NO. | CL586-0555-2-55 |
| | | △ 2/2 |