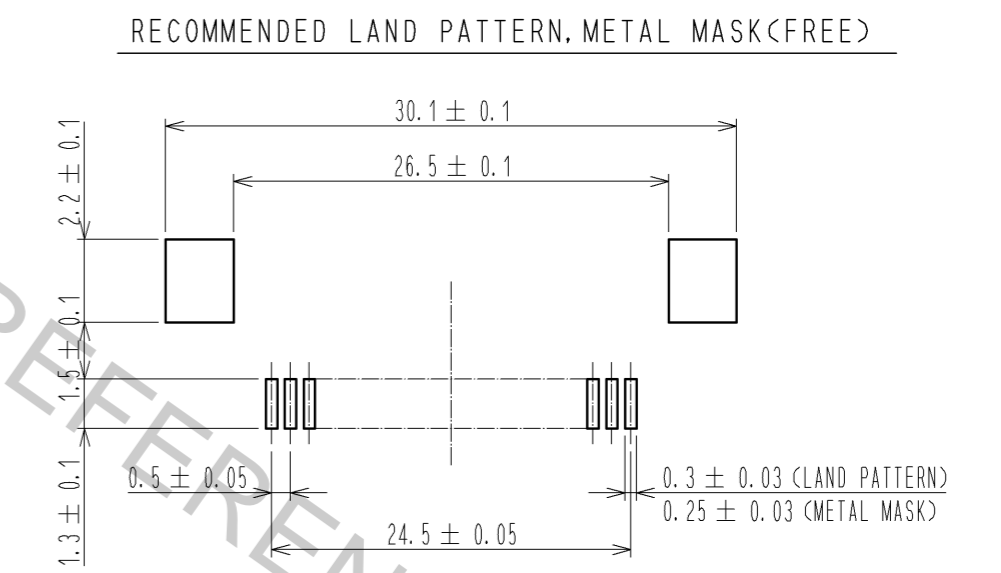
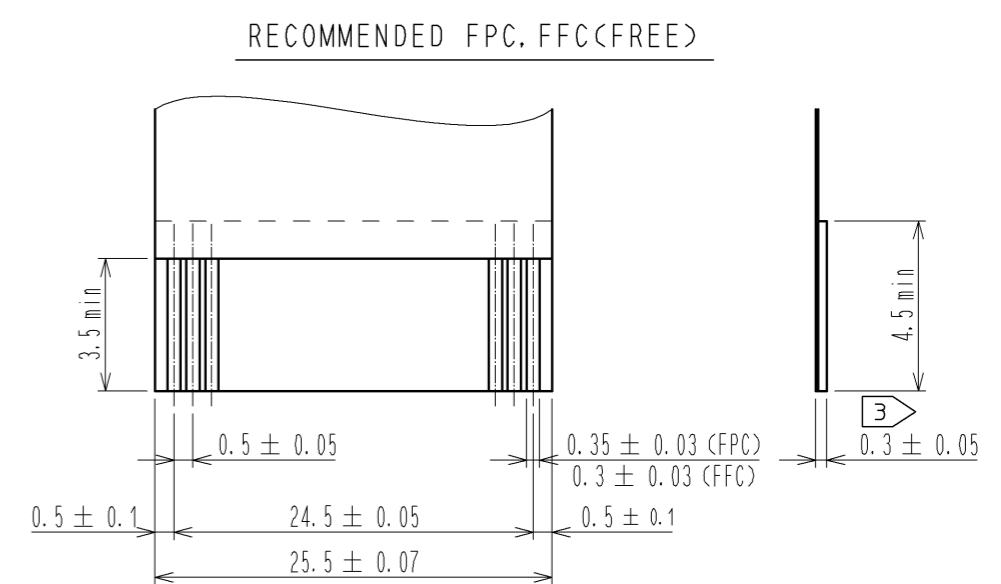
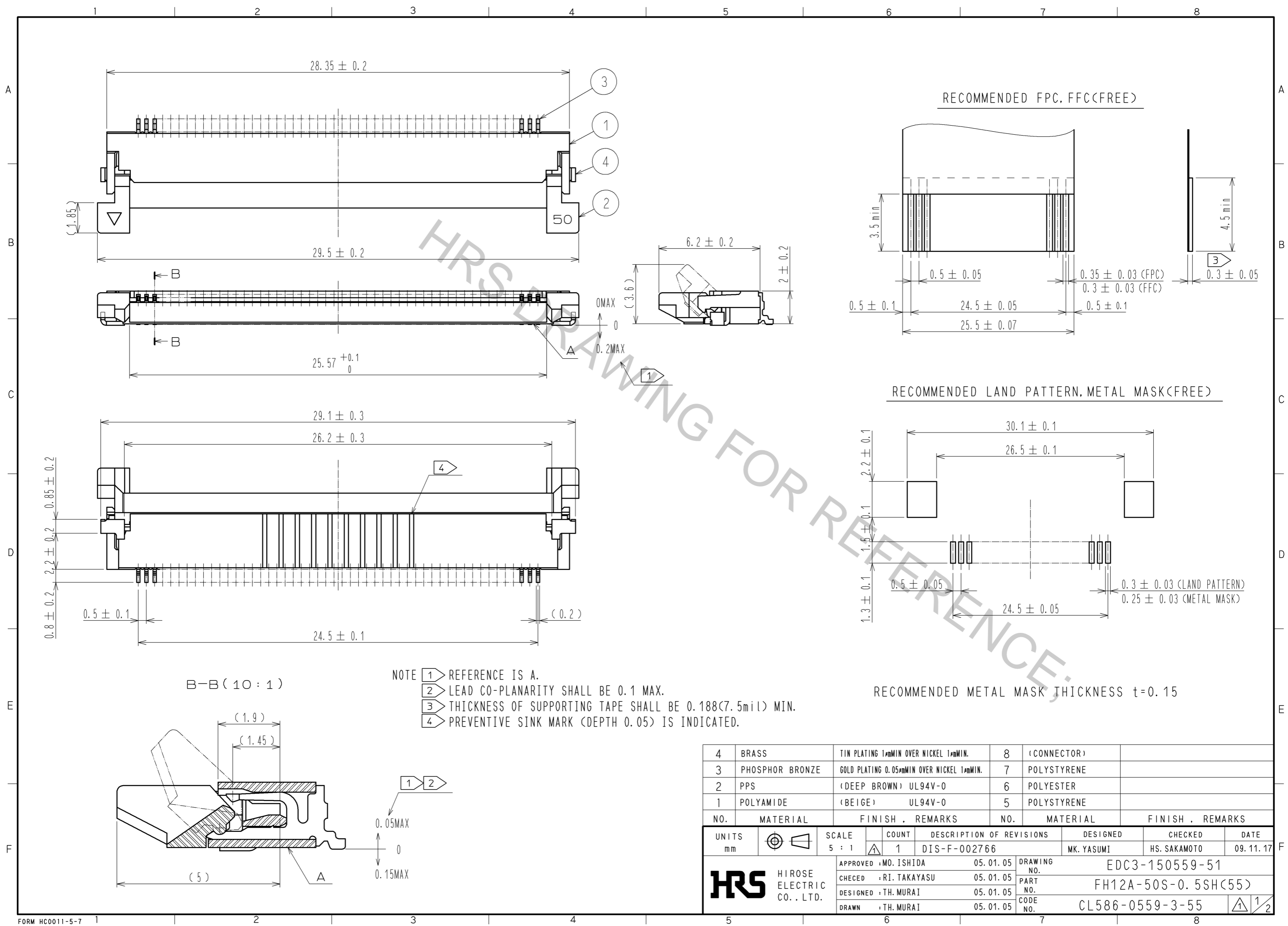
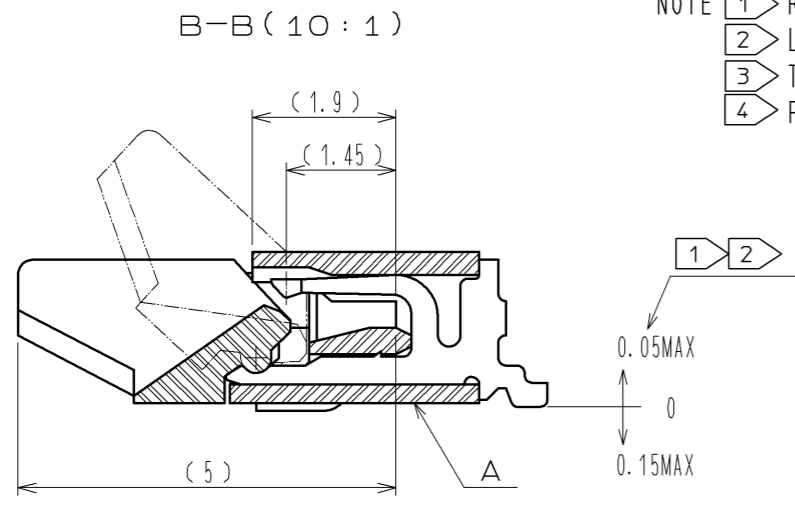


Aug.1.2016 Copyright 2016 HIROSE ELECTRIC CO., LTD. All Rights Reserved.



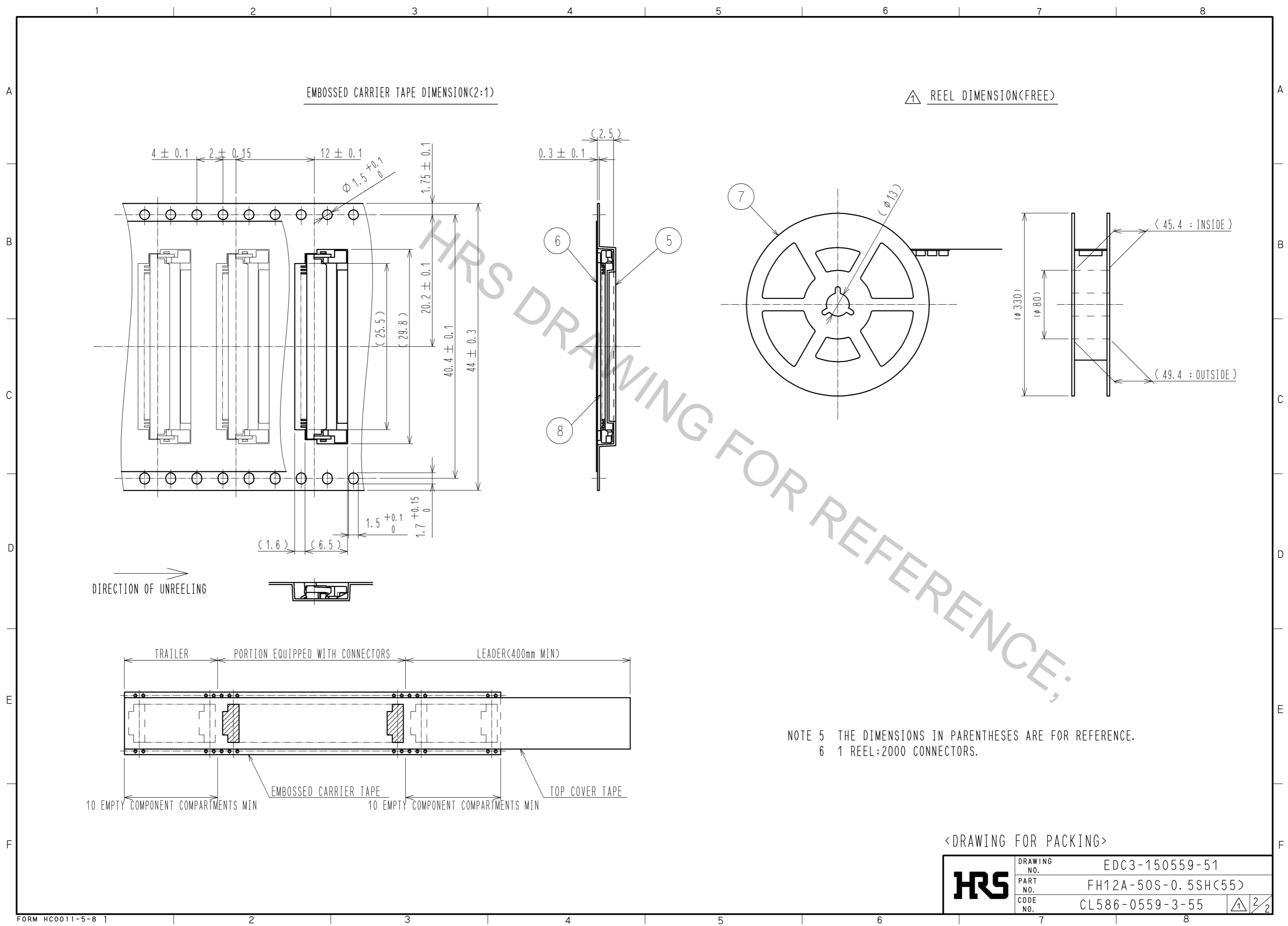
RECOMMENDED METAL MASK THICKNESS t=0.15

- NOTE
- ① REFERENCE IS A.
 - ② LEAD CO-PLANARITY SHALL BE 0.1 MAX.
 - ③ THICKNESS OF SUPPORTING TAPE SHALL BE 0.188(7.5mil) MIN.
 - ④ PREVENTIVE SINK MARK (DEPTH 0.05) IS INDICATED.



4	BRASS	TIN PLATING 1μmMIN OVER NICKEL 1μmMIN.	8	(CONNECTOR)	
3	PHOSPHOR BRONZE	GOLD PLATING 0.05μmMIN OVER NICKEL 1μmMIN.	7	POLYSTYRENE	
2	PPS	(DEEP BROWN) UL94V-0	6	POLYESTER	
1	POLYAMIDE	(BEIGE) UL94V-0	5	POLYSTYRENE	
NO.	MATERIAL	FINISH . REMARKS	NO.	MATERIAL	FINISH . REMARKS
UNITS	mm	SCALE	COUNT	DESCRIPTION OF REVISIONS	DESIGNED
		5 : 1	1	DIS-F-002766	MK. YASUMI
					CHECKED
					HS. SAKAMOTO
					DATE
					09.11.17
APPROVED : MO. ISHIDA			05.01.05	DRAWING NO.	
CHECED : RI. TAKAYASU			05.01.05	EDC3-150559-51	
DESIGNED : TH. MURAI			05.01.05	PART NO.	
DRAWN : TH. MURAI			05.01.05	FH12A-50S-0.5SH(55)	
				CODE NO.	
				CL586-0559-3-55	

Aug.1.2016 Copyright 2016 HIROSE ELECTRIC CO., LTD. All Rights Reserved.



HRS	DRAWING NO.	EDC3-150559-51
	PART NO.	FH12A-50S-0.5SH(55)
	CODE NO.	CL586-0559-3-55
		\triangle 2/2