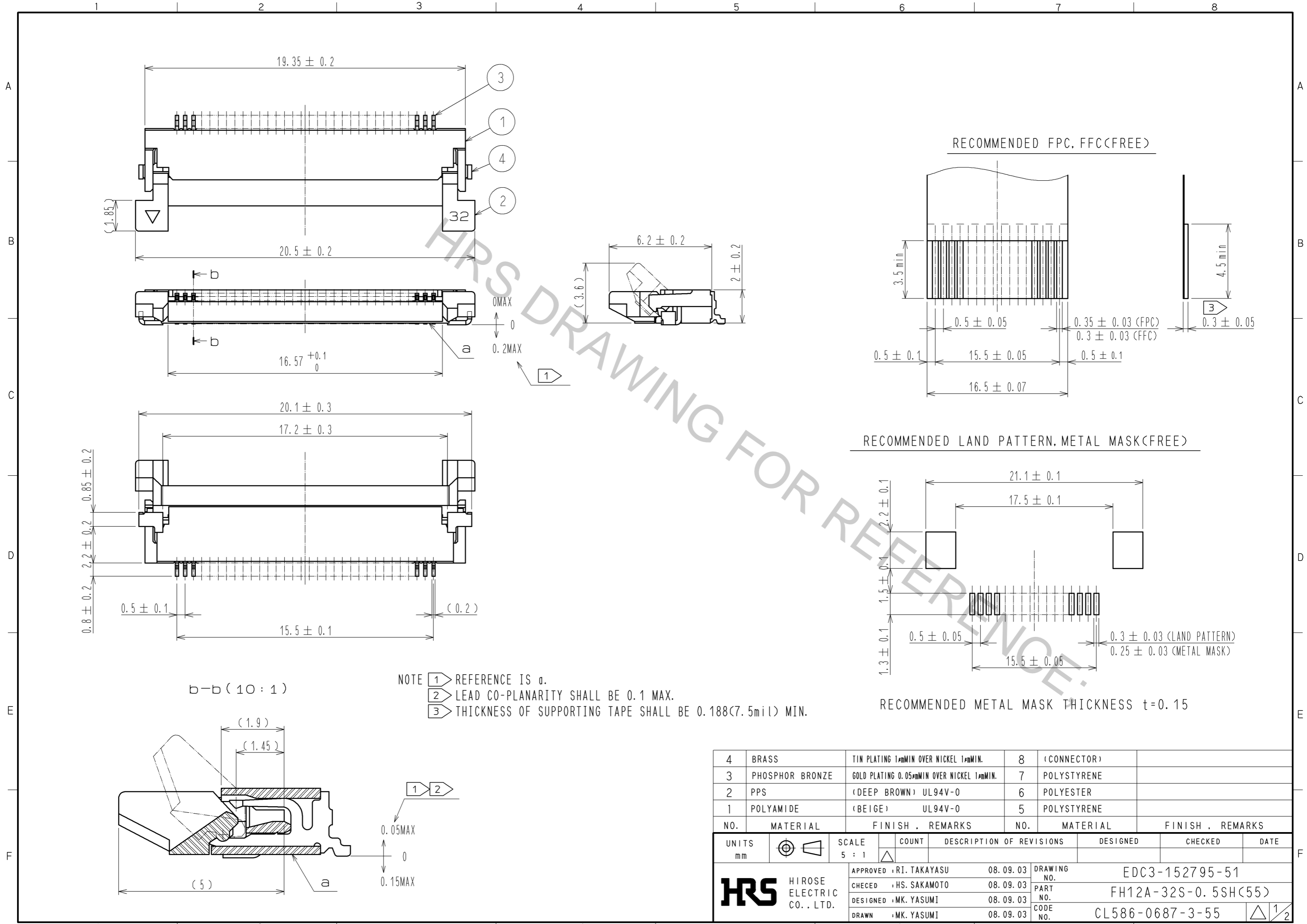
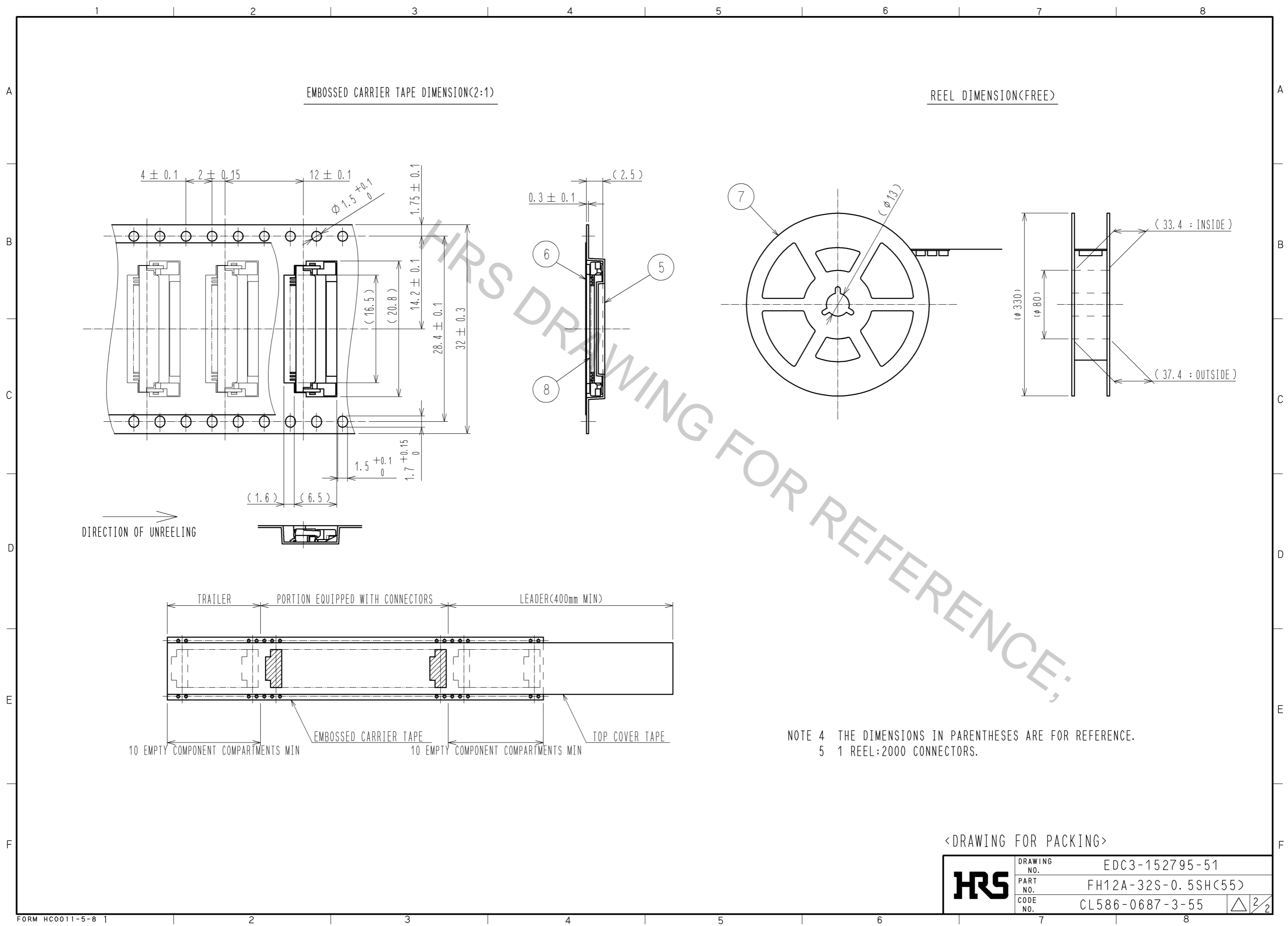


Aug.1.2016 Copyright 2016 HIROSE ELECTRIC CO., LTD. All Rights Reserved.



4	BRASS	TIN PLATING $1 \mu\text{m}$ MIN OVER NICKEL $1 \mu\text{m}$ MIN.	8	(CONNECTOR)	
3	PHOSPHOR BRONZE	GOLD PLATING $0.05 \mu\text{m}$ MIN OVER NICKEL $1 \mu\text{m}$ MIN.	7	POLYSTYRENE	
2	PPS	(DEEP BROWN) UL94V-0	6	POLYESTER	
1	POLYAMIDE	(BEIGE) UL94V-0	5	POLYSTYRENE	
NO.	MATERIAL	FINISH . REMARKS	NO.	MATERIAL	FINISH . REMARKS
UNITS		SCALE	COUNT	DESCRIPTION OF REVISIONS	
mm		5 : 1		DESIGNED	CHECKED
APPROVED : RI. TAKAYASU			08.09.03	DRAWING NO. EDC3-152795-51	
CHECED : HS. SAKAMOTO			08.09.03	PART NO. FH12A-32S-0.5SH(55)	
DESIGNED : MK. YASUMI			08.09.03	CODE NO. CL586-0687-3-55	
DRAWN : MK. YASUMI			08.09.03		

Aug.1.2016 Copyright 2016 HIROSE ELECTRIC CO., LTD. All Rights Reserved.



EMBOSSED CARRIER TAPE DIMENSION(2:1)

REEL DIMENSION(FREE)

DIRECTION OF UNREELING

NOTE 4 THE DIMENSIONS IN PARENTHESES ARE FOR REFERENCE.  
 5 1 REEL:2000 CONNECTORS.

<DRAWING FOR PACKING>

<b>HRS</b>	DRAWING NO.	EDC3-152795-51
	PART NO.	FH12A-32S-0.5SH(55)
	CODE NO.	CL586-0687-3-55
		△ 2/2