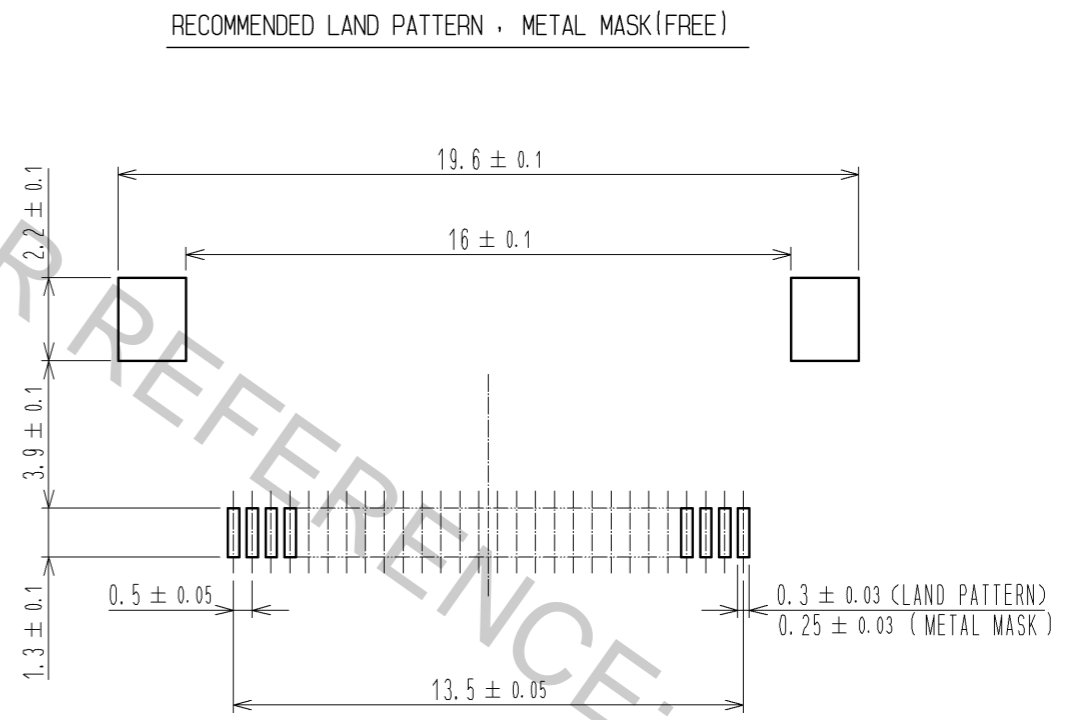
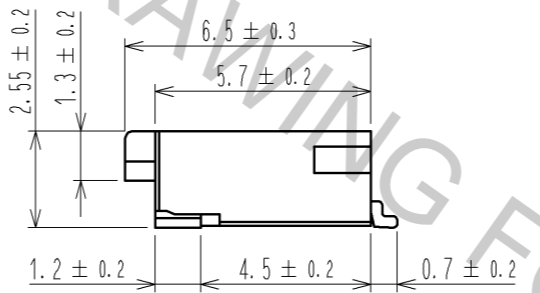
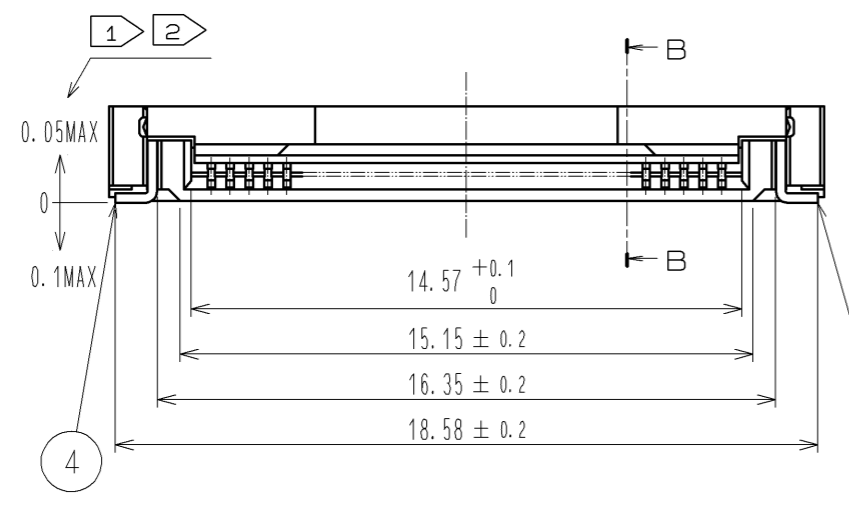
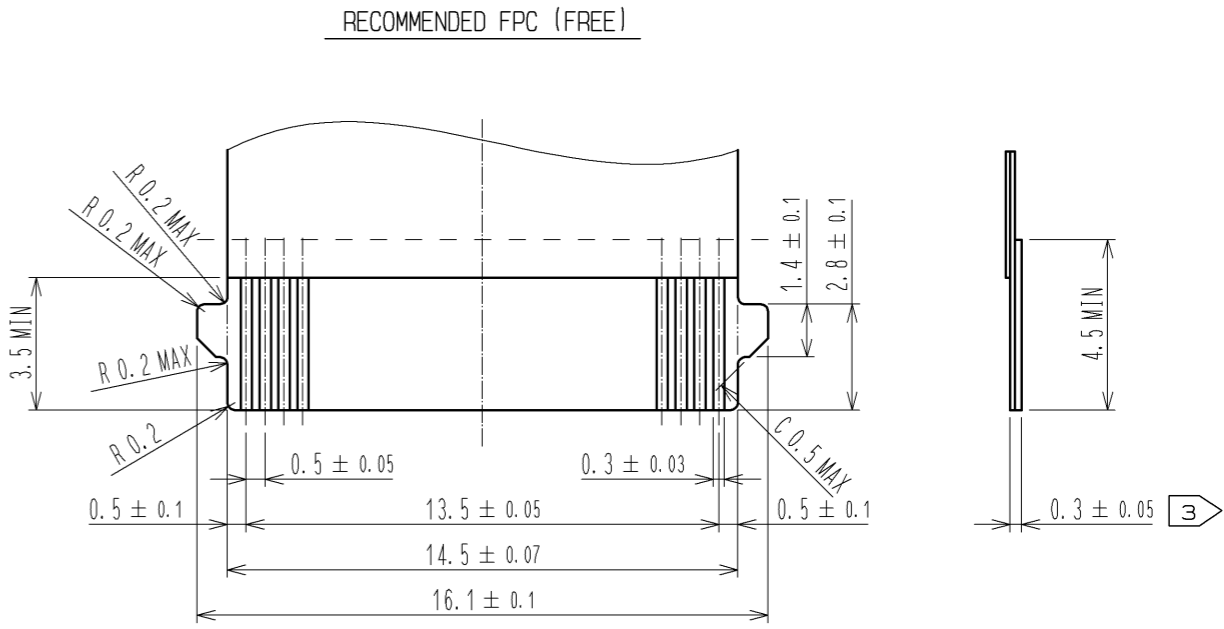
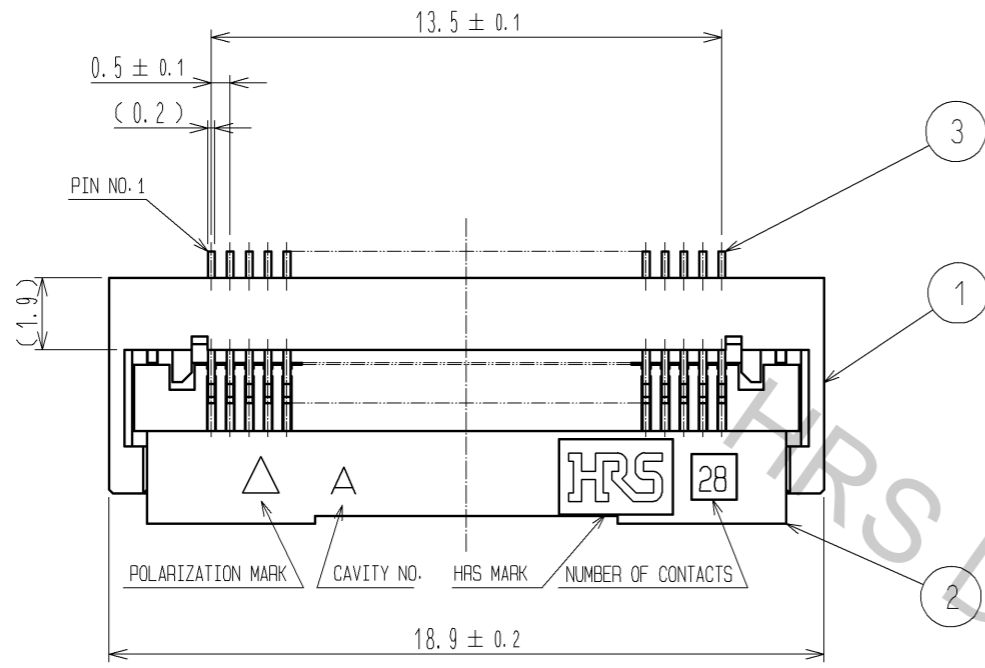
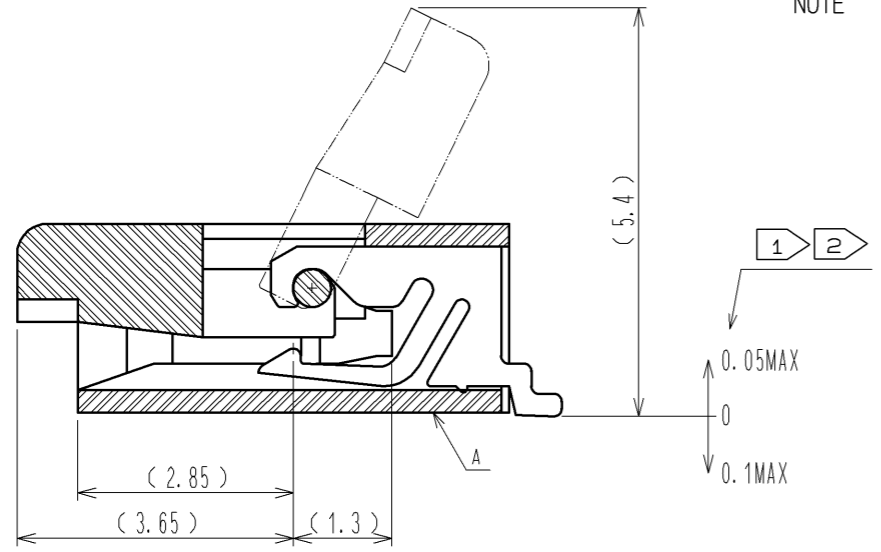


Aug.1.2016 Copyright 2016 HIROSE ELECTRIC CO., LTD. All Rights Reserved.



B-B (10:1)

- NOTE
- 1 REFERENCE IS A.
 - 2 LEAD CO-PLANARITY SHALL BE 0.1 MAX.
 - 3 THICKNESS OF SUPPORTING TAPE SHALL BE 0.188(7.5mil) MIN.

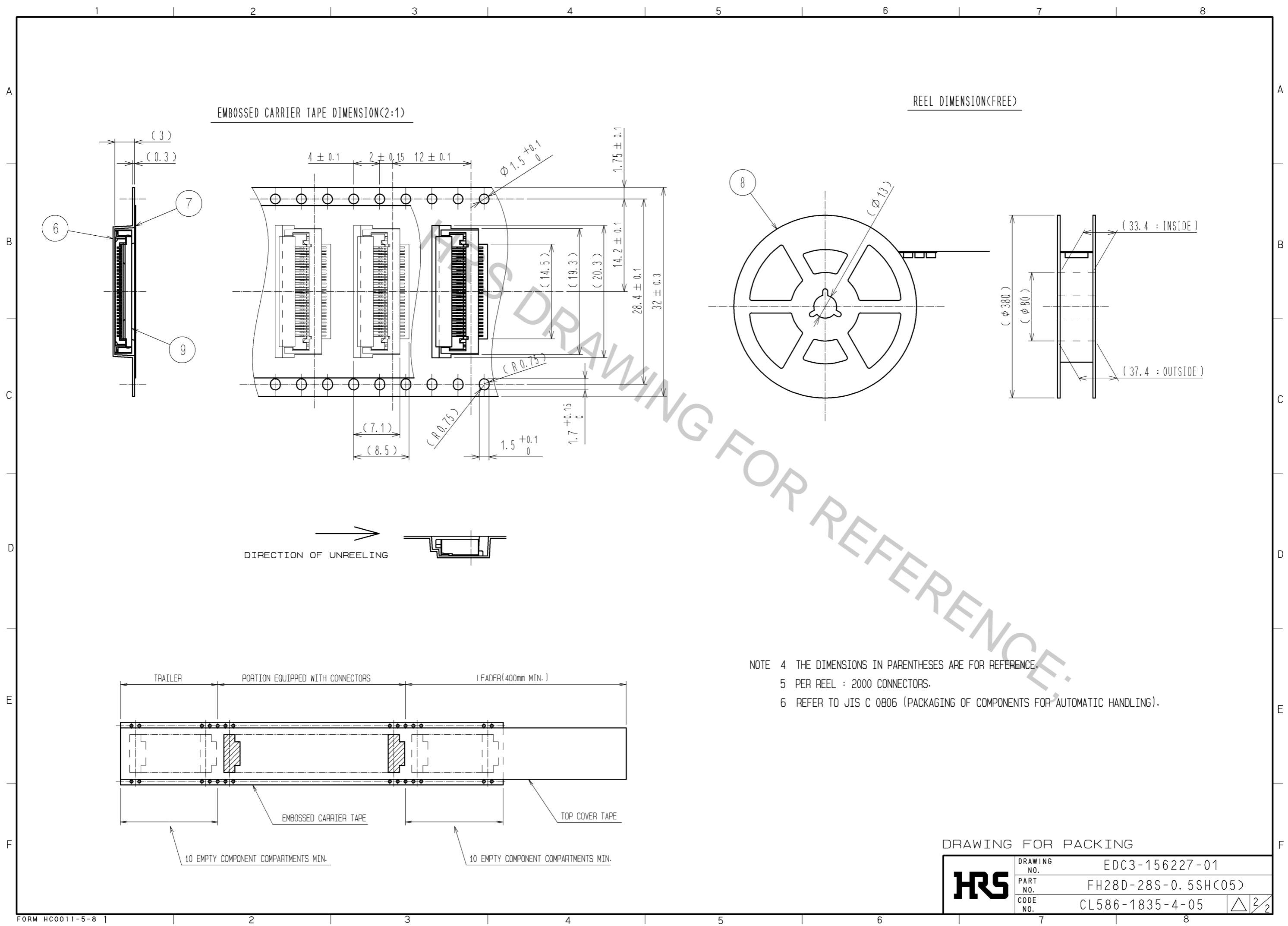


RECOMMENDED METAL MASK THICKNESS: t=0.15

5	BRASS	TIN PLATING 1#MMIN OVER NICKEL 1#MMIN			
4	BRASS	TIN PLATING 1#MMIN OVER NICKEL 1#MMIN	9	(CONNECTOR)	
3	PHOSPHOR BRONZE	GOLD PLATING FLASH OVER NICKEL 1#MMIN	8	POLYSTYRENE	
2	LCP	(BLACK) UL94V-0	7	POLYESTER	
1	LCP	(GRAY) UL94V-0	6	POLYSTYRENE	
NO.	MATERIAL	FINISH . REMARKS	NO.	MATERIAL	FINISH . REMARKS

UNITS mm		SCALE 5:1	COUNT △	DESCRIPTION OF REVISIONS	DESIGNED	CHECKED	DATE
APPROVED : RI. TAKAYASU 08.02.01				DRAWING NO. EDC3-156227-01			
CHECED : HS. SAKAMOTO 08.02.01				PART NO. FH28D-28S-0.5SH(05)			
DESIGNED : RT. IKEDA 08.02.01				CODE NO. CL586-1835-4-05			
DRAWN : RT. IKEDA 08.02.01				△ 1/2			

Aug.1.2016 Copyright 2016 HIROSE ELECTRIC CO., LTD. All Rights Reserved.



DRAWING FOR PACKING

HRS	DRAWING NO.	EDC3-156227-01
	PART NO.	FH28D-28S-0.5SH(C05)
	CODE NO.	CL586-1835-4-05
		△ 2/2