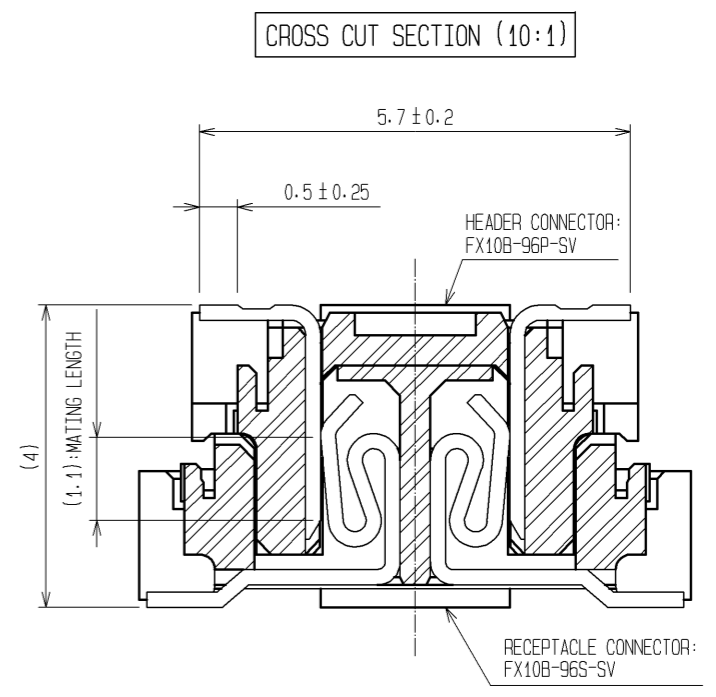
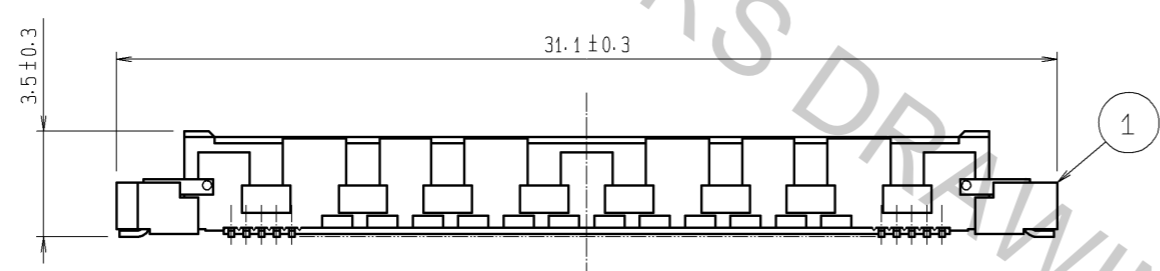
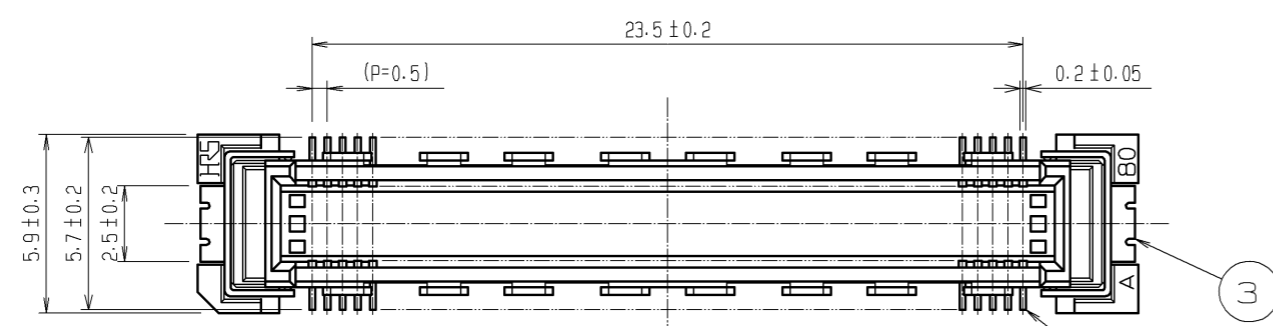
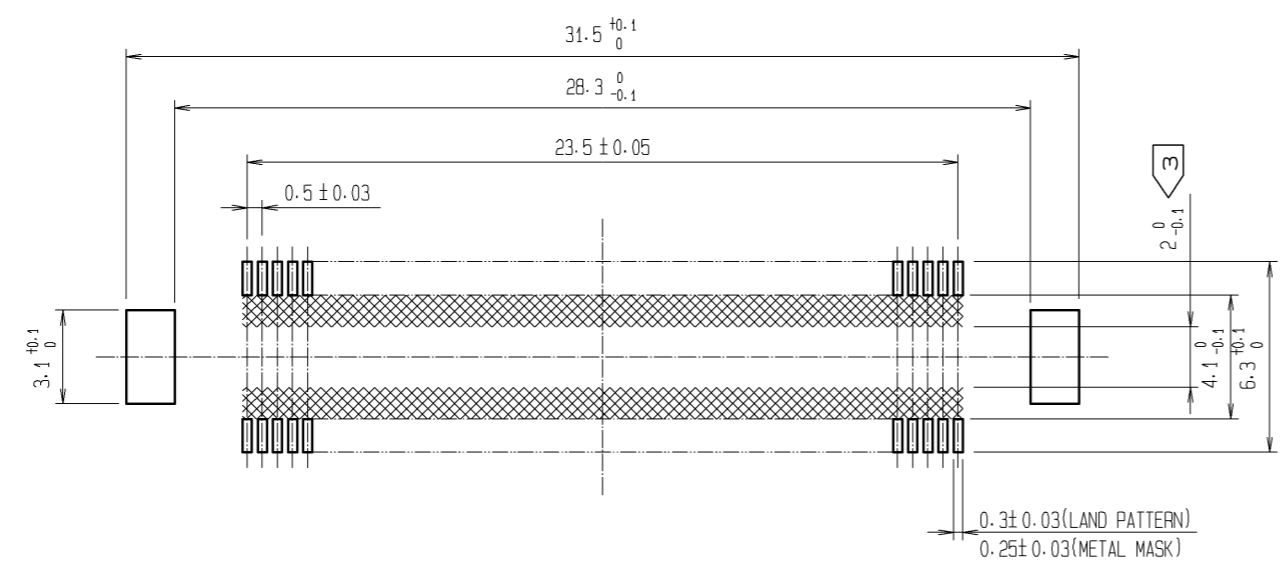


Aug.1.2016 Copyright 2016 HIROSE ELECTRIC CO., LTD. All Rights Reserved.



RECOMMENDED LAND PATTERN DIMENSION OF PCB  
(RECOMMENDED METAL MASK THICKNESS: 0.15mm)

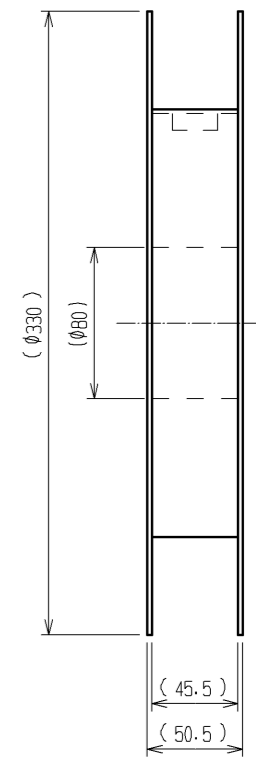
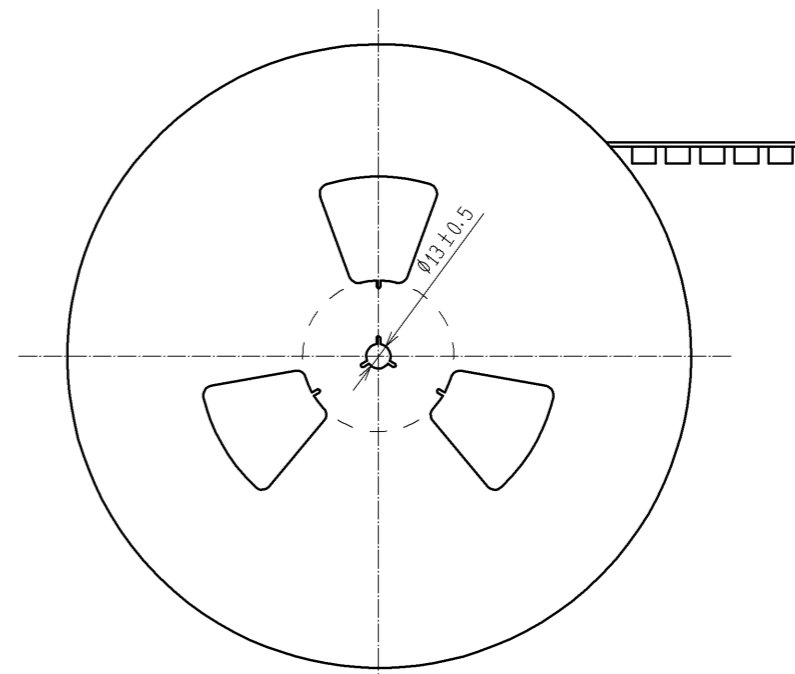
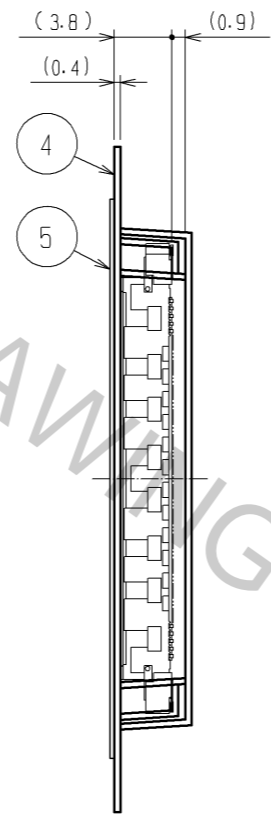
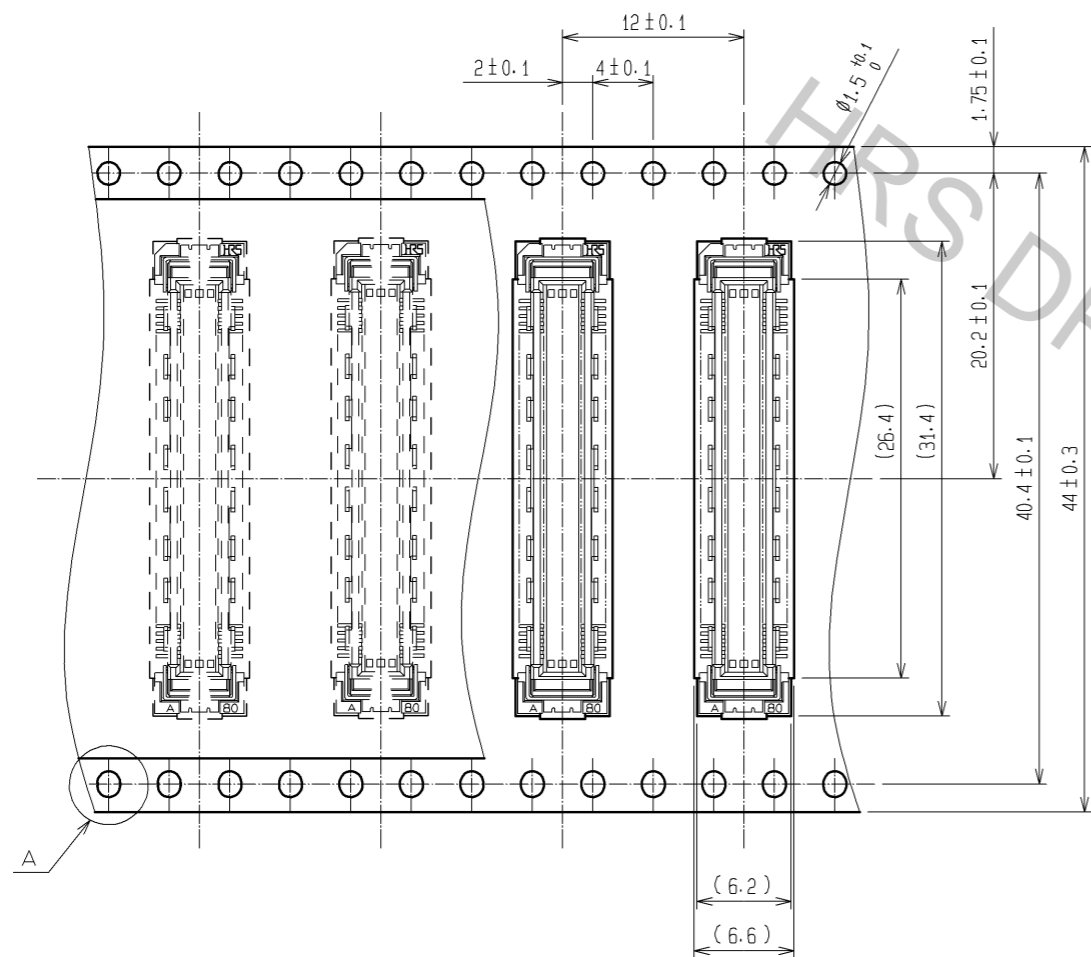


- NOTES
- 1 SMT LEAD-COPLANARITY: 0.1 MAX.
  - 2 THIS PRODUCT HAS NO POLARITY TO PATTERN FOR MOUNTING.
  - ③ MAKE SURE WIDTH OF PATTERN IS WITHIN THAT OF LAND, OR LEAD MAY TOUCH PATTERN. (THIS APPLIES TO HATCHED AREA.)
  - 4 EMBOSS CARRIER TAPE PACKAGE IS APPLIED ON THIS PRODUCT. PLEASE REFER TO THE SHEET 2/2 FOR THE DETAILS.
  - 5 THE DIMENSIONS IN PARENTHESES ARE FOR REFERENCE.

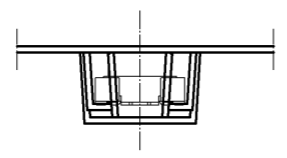
| 3                                    | PHOSPHOR BRONZE | TIN-PLATING  |                 |             |                       |                          |          |         |      |
|--------------------------------------|-----------------|--|-----------------|-------------|-----------------------|--------------------------|----------|---------|------|
| 2                                    | PHOSPHOR BRONZE | CONTACT AREA: GOLD 0.1μm min.<br>LEAD AREA: TIN-PLATING 1μm min.<br>UNDER PLATING: NICKEL 1μm min. | 5               | POLYESTER   | TOP COVER TAPE        |                          |          |         |      |
| 1                                    | LCP             | BEIGE UL94V-0  | 4               | POLYSTYRENE | EMBOSSED CARRIER TAPE |                          |          |         |      |
| NO.                                  | MATERIAL        | FINISH   | REMARKS         | NO.         | MATERIAL              | FINISH                   | REMARKS  |         |      |
| UNITS                                | mm              | SCALE  | 4 : 1           | COUNT       | △                     | DESCRIPTION OF REVISIONS | DESIGNED | CHECKED | DATE |
| <b>HRS</b> HIROSE ELECTRIC CO., LTD. |                 | APPROVED   | : HT. YAMAGUCHI | 10.07.29    | DRAWING NO.           | EDC3-151956-21           |          |         |      |
|                                      |                 | CHECKED  | : HT. YAMAGUCHI | 10.07.29    | PART NO.              | FX10B-96P-SV(91)         |          |         |      |
|                                      |                 | DESIGNED   | : SY. KAMIGA    | 10.07.29    | CODE NO.              | CL570-0051-3-91          |          |         |      |
|                                      |                 | DRAWN  | : HK. SUNADORI  | 10.07.28    |                       | △ 1/2                    |          |         |      |

# DRAWING FOR PACKING(2:1)

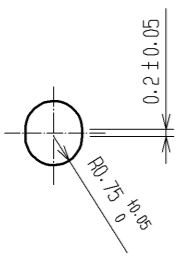
REELED DIMENSION(Free)



THE DIRECTION OF PULLING OUT →



A(5:1)



- NOTES
- 1 REEL : 1000 CONNECTORS.
  - 2 MINIMUM 10 COMPARTMENTS FROM BOTH REEL ENDS REMAIN EMPTY.
  - 3 THIS PRODUCT HAS NO POLARITY TO TAPE AND REEL PACKAGING.
  - 4 THE DIMENSIONS IN PARENTHESES ARE FOR REFERENCE.

|            |             |                  |     |
|------------|-------------|------------------|-----|
| <b>HRS</b> | DRAWING NO. | EDC3-151956-21   | 2/2 |
|            | PART NO.    | FX10B-96P-SV(91) |     |
|            | CODE NO.    | CL570-0051-3-91  |     |
|            |             |                  |     |