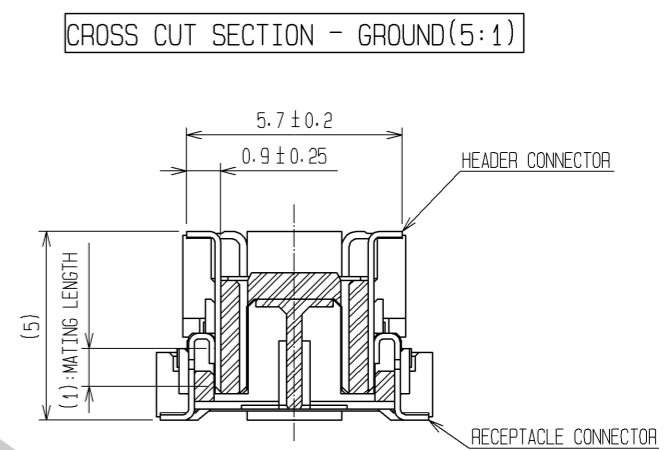
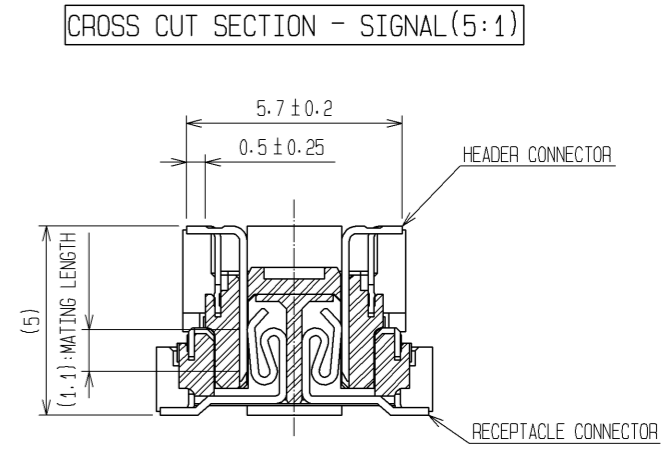
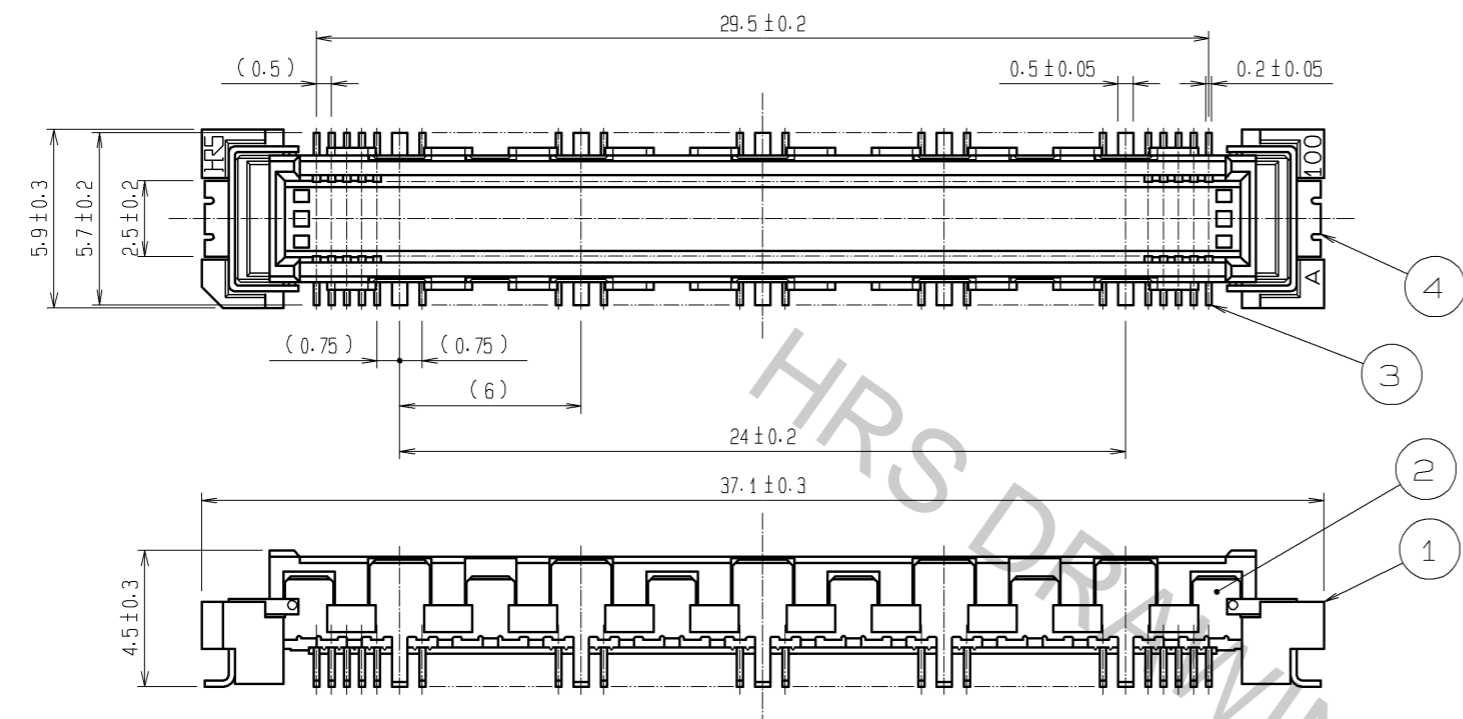
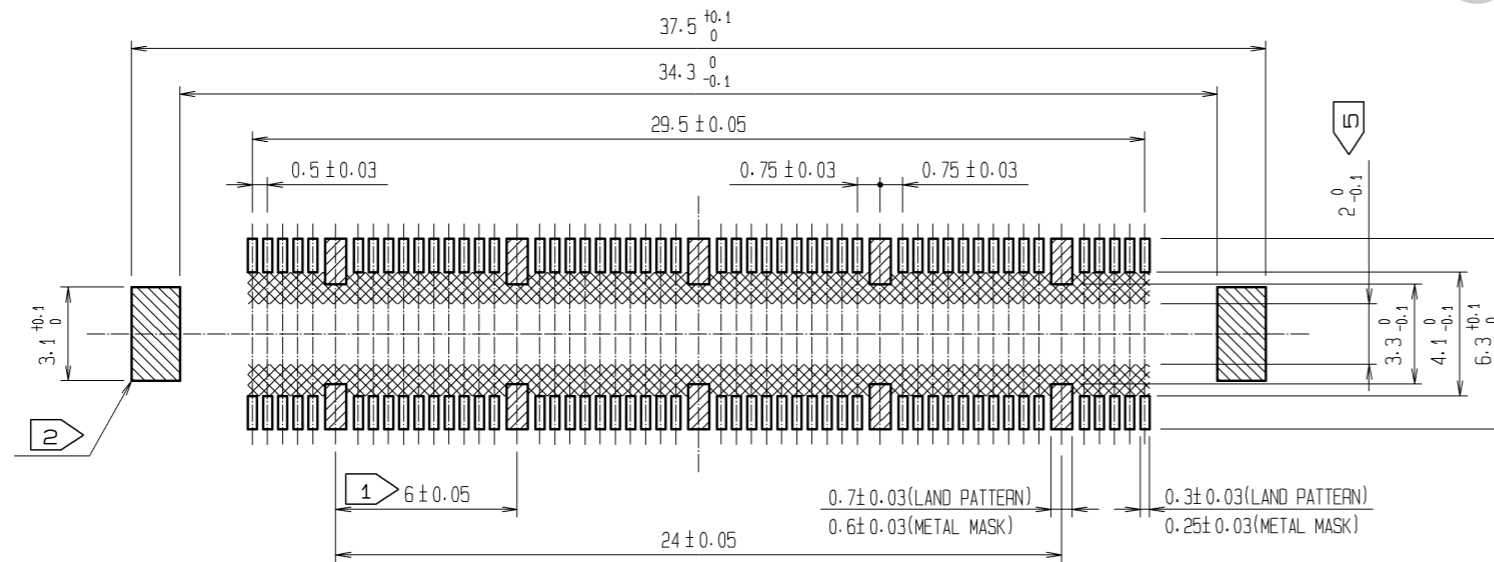


Aug.1.2016 Copyright 2016 HIROSE ELECTRIC CO., LTD. All Rights Reserved.



RECOMMENDED LAND PATTERN DIMENSION OF PCB
(RECOMMENDED METAL MASK THICKNESS : 0.15mm)



- NOTES
- ① 10 HATCHED PARTS:GROUND CIRCUIT.
 - ② 2 HATCHED PARTS:GROUND CIRCUIT.
 - ③ SMT LEAD-COPLANARITY:0.1 MAX.
 - ④ THIS PRODUCT HAS NO POLARITY TO PATTERN FOR MOUNTING.
 - ⑤ MAKE SURE WIDTH OF PATTERN IS WITHIN THAT OF LAND, OR LEAD MAY TOUCH PATTERN. (THIS APPLIES TO HATCHED AREA.)
 - ⑥ THE DIMENSIONS IN PARENTHESES ARE FOR REFERENCE.

4	PHOSPHOR BRONZE	TIN-PLATING							
3	PHOSPHOR BRONZE	TIN-PLATING	CONTACT AREA:GOLD 0.1μm min.						
1	LCP	BEIGE UL94V-0	LEAD AREA :TIN-PLATING 1μm min.						
			UNDER PLATING : NICKEL 1μm min.						
NO.	MATERIAL	FINISH	REMARKS	NO.	MATERIAL	FINISH	REMARKS		
UNITS		SCALE	COUNT	DESCRIPTION OF REVISIONS			DESIGNED	CHECKED	DATE
mm		4 : 1	△	APPROVED : HS. OKAWA	08.06.26	DRAWING NO. EDC3-151965-25			
HIROSE ELECTRIC CO., LTD.				CHECKED : HT. YAMAGUCHI	08.06.25	PART NO. FX10B-100P/10-SV1(71)			
				DESIGNED : SY. KAMIGA	08.06.23	CODE NO. CL570-0122-0-71			
				DRAWN : HK. SUNADORI	08.06.17	△ 1/1			