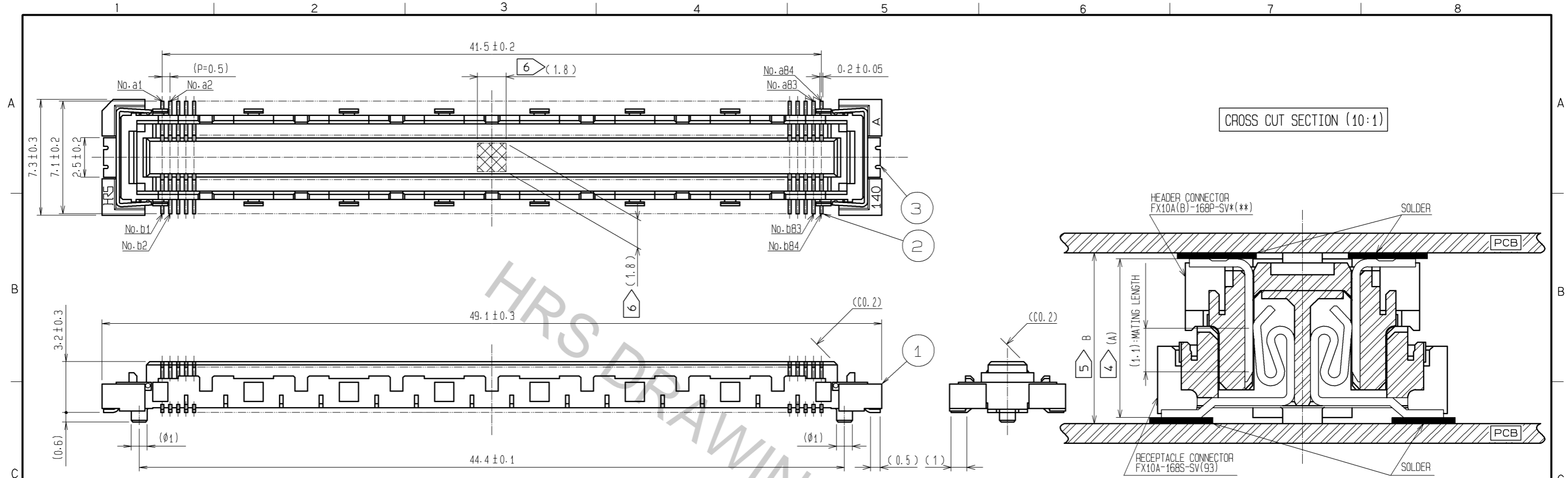
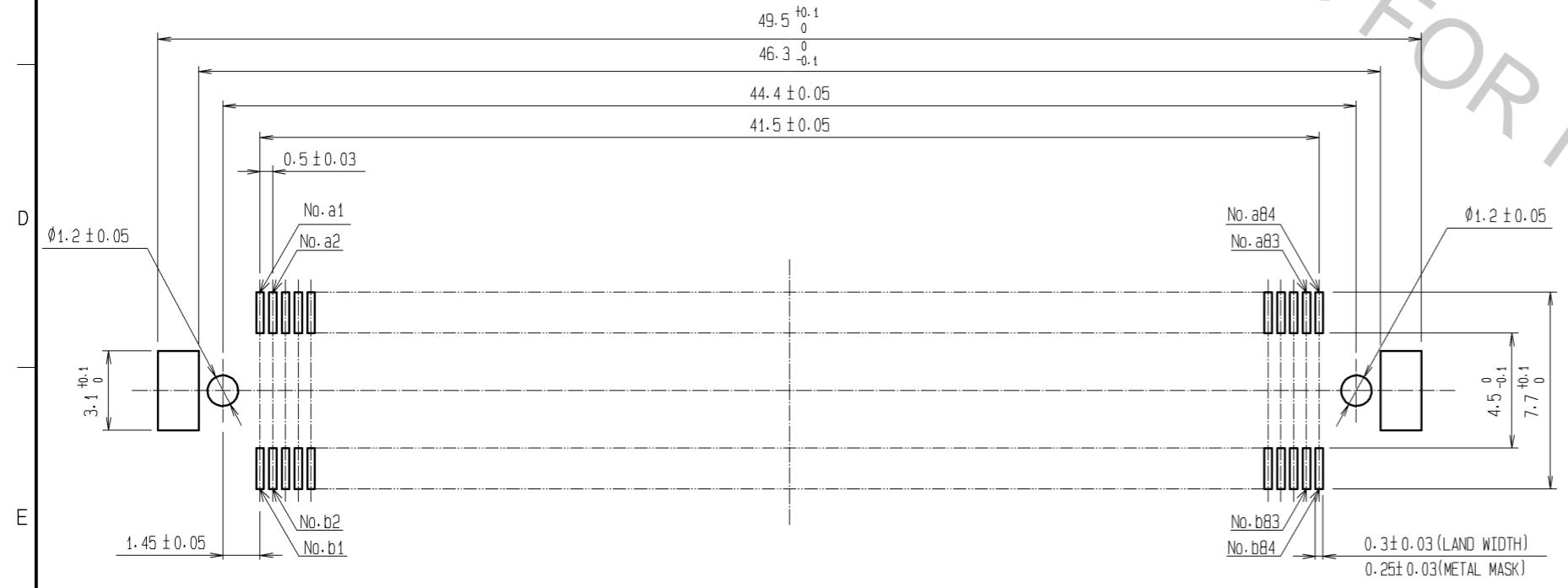


Aug.1.2016 Copyright 2016 HIROSE ELECTRIC CO., LTD. All Rights Reserved.



RECOMMENDED LAND PATTERN DIMENSION OF PCB  
(RECOMMENDED METAL MASK THICKNESS: 0.15mm)



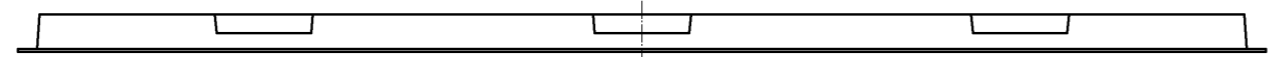
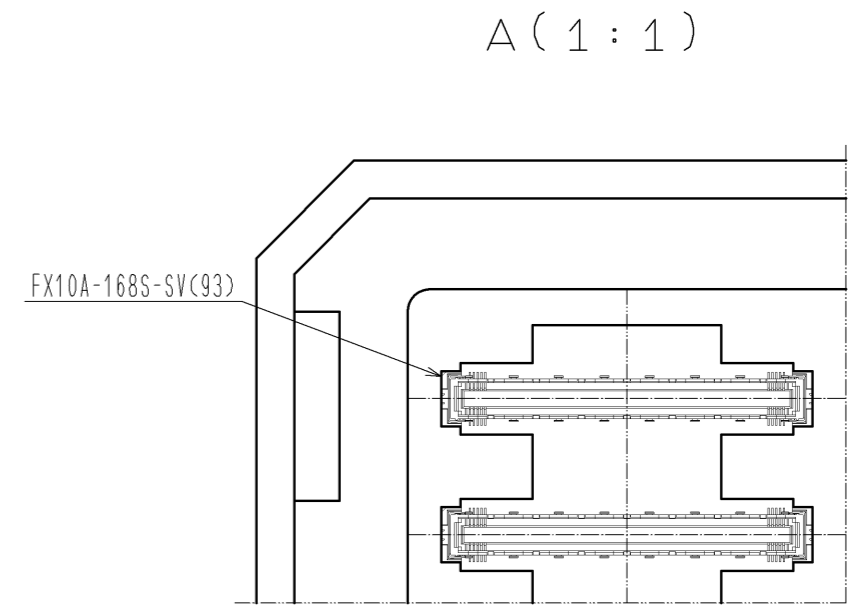
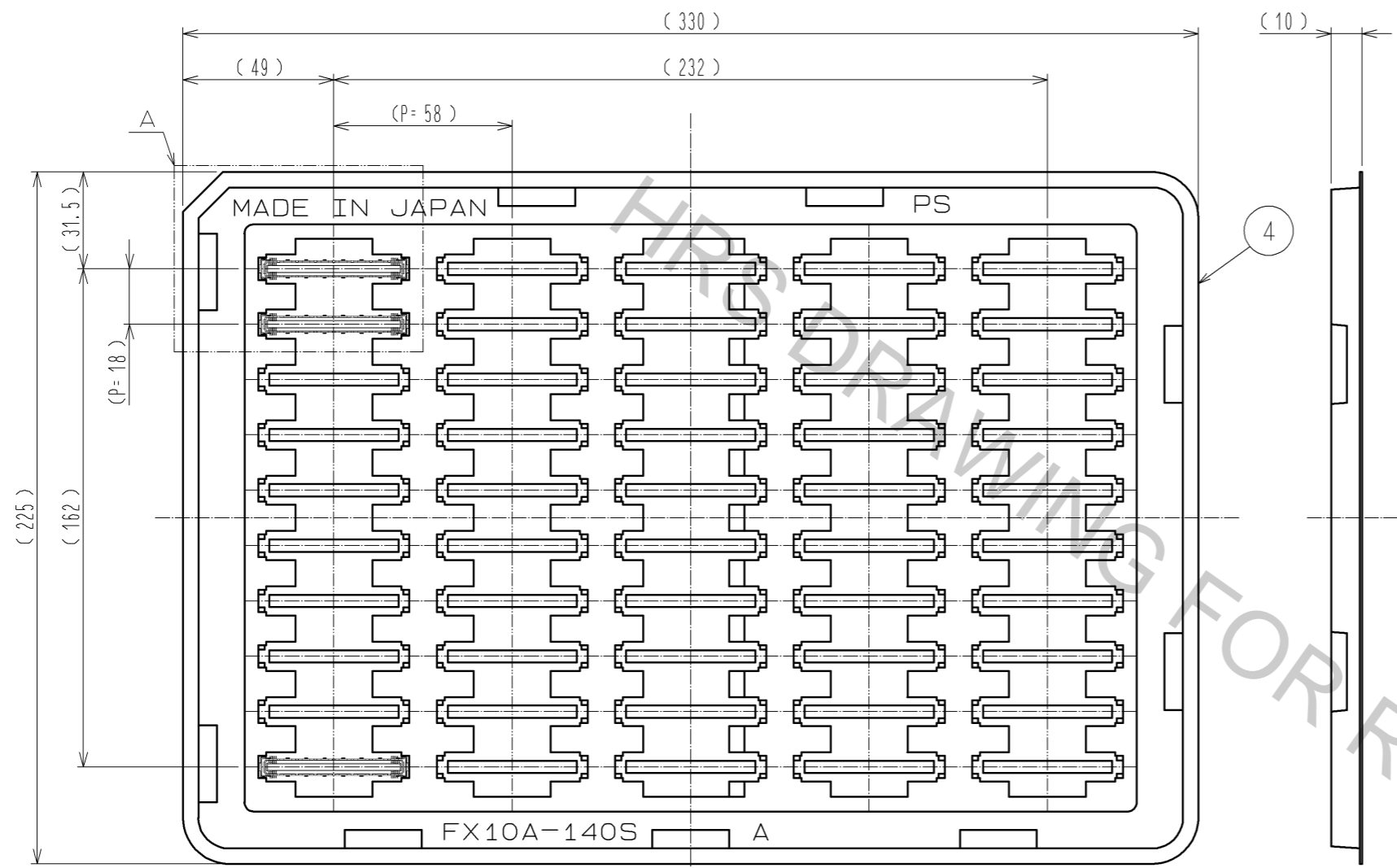
STACKING HEIGHT

	FX10A-168S-SV(83)	
	4 > (A)	5 > B
FX10A(B)-168P-SV(**)	4	4.3 ± 0.127
FX10A(B)-168P-SV1(**)	5	5.3 ± 0.127
FX10A(B)-168P-SV2(**)	6	6.0 ± 0.127
FX10A(B)-168P-SV3(**)	7	7.0 ± 0.127
FX10A(B)-168P-SV4(**)	8	8.0 ± 0.127

- NOTES
- 1 SMT LEAD-COPLANARITY: 0.1 MAX.
  - 2 THIS PRODUCT HAS NO POLARITY TO PATTERN FOR MOUNTING.
  - 3 THE DIMENSIONS IN PARENTHESES ARE FOR REFERENCE.
  - 4 > STACKING HEIGHT FROM LEAD TO LEAD(REFERENCE DIMENSIONS)
  - 5 > BOARD DISTANCE
  - 6 <img alt="hatched box symbol" style="vertical-align: middle;"/> AREA IS VACUUM PICKUP AREA FOR REFERENCE.

2	PHOSPHOR BRONZE	CONTACT AREA: GOLD 0.76µm min.	4	PS	3	PHOSPHOR BRONZE	SURFACE AREA: GOLD 0.03µm min.
		LEAD AREA: GOLD 0.03µm min.					UNDER PLATING: NICKEL 1.3µm min.
1	LCP	BEIGE UL94V-0					
NO.	MATERIAL	FINISH	REMARKS	NO.	MATERIAL	FINISH	REMARKS
UNITS		SCALE		COUNT		DESCRIPTION OF REVISIONS	
mm		4 : 1		△		DESIGNED	
						CHECKED	
						DATE	
<b>HRS</b> HIROSE ELECTRIC CO., LTD.		APPROVED : HS. OKAWA	12.11.16	DRAWING NO.		EDC3-151987-02	
		CHECKED : HT. YAMAGUCHI	12.11.16	PART NO.		FX10A-168S-SV(93)	
		DESIGNED : YJ. ASAO	12.11.15	CODE NO.		CL570-0244-7-93	
		DRAWN : YJ. ASAO	12.11.15			△ 1/2	

# DRAWING FOR PACKING(2:1)



- NOTES
- 1 1TRAY:50 CONNECTORS.
  - 2 THIS PRODUCT HAS NO POLARITY TO TRAY PACKAGING.
  - 3 THE DIMENSIONS IN PARENTHESES ARE FOR REFERENCE.

<b>HRS</b>	図番:	EDC3-151987-02	△ 2/2
	製品名:	FX10A-168S-SV(93)	
	製品コード:	CL570-0244-7-93	