

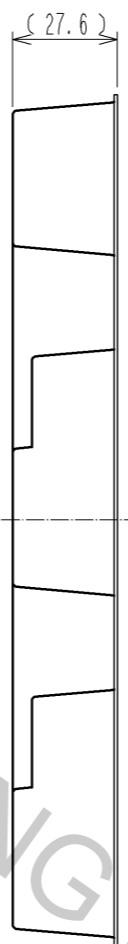
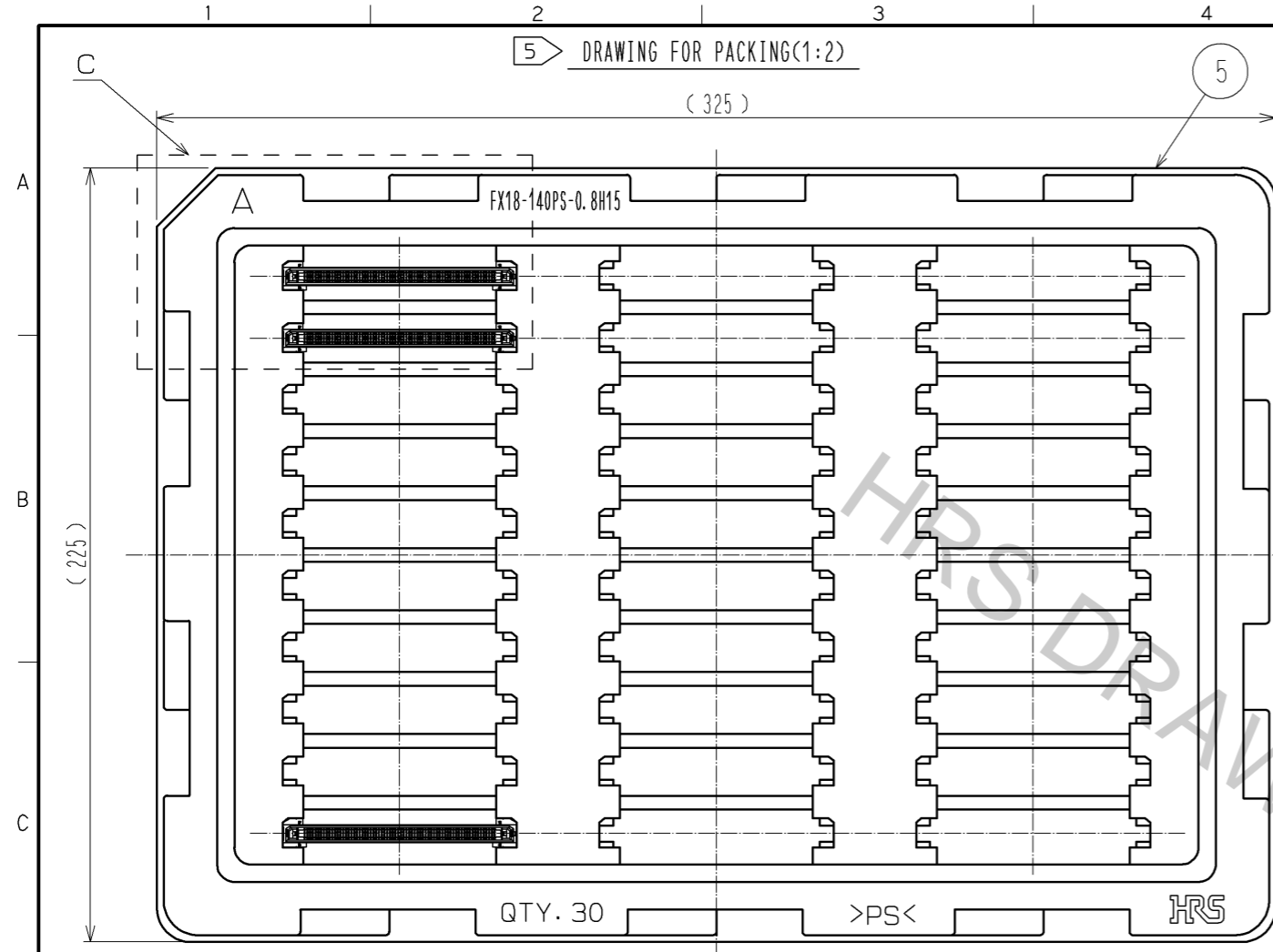
- NOTE
- 1 MOUNTING SIDE IS CONNECTED TO THE RECEPTACLE:FX18-140S-0.8SV** AND STABILIZED WITH FRICTION LOCKS. THE INSERTION/WITHDRAWAL IS ALLOWED UP TO 5 TIMES.
 - 2 ALWAYS CONNECT THE MOUNTING SIDE TO THE RECEPTACLE FIRST AND THEN MATE THE MATING SIDE TO FX18-140P-0.8SV**.
 - 3 THE MATING SIDE HAS SEQUENTIAL CONTACT STRUCTURE AS FOLLOWS.(MF CONTACT A->SIGNAL CONTACT->MF CONTACT B) WHEN USING THIS SEQUENTIAL STRUCTURE, PLEASE AVOID ANGLED INSERTION.
 - 4 MF CONTACT A AND MF CONTACT B CAN BE USED AS POWER SUPPLY CONTACT. (3A/PIN MAX)
 - 5 THIS IS PACKAGED IN TRAY.(30pcs/TRAY)
 - 6 BLEMISH AND HIT MARK CAN BE OCCURED THROUGH OUT THE MANUFACTURING PROCESS WHICH DOESN' T AFFECT QUALITY LEVEL.
 - 7 THE DIMENSIONS IN PARENTHESES ARE FOR REFERENCES.
 - 8 RECOMMENDED SPACER HEIGHT FOR EACH COMBINATION. SPACERS ARE REQUIRED TO PROTECT THE SOLDER JOINTS FROM EXCESSIVE STRESS.

NO.	MATERIAL	FINISH	REMARKS	NO.	MATERIAL	FINISH	REMARKS
2A	COPPER ALLOY	CONTACT AREA:GOLD 0.1μm UNDER PLATING:NICKEL 1.3μm		5	POLYSTYRENE		
2	PBT	BLACK UL94V-0		4	COPPER ALLOY	CONTACT AREA:GOLD 0.1μm UNDER PLATING:NICKEL 1.3μm	
1	POLYAMIDE	BLACK UL94V-0		3	COPPER ALLOY	CONTACT AREA:GOLD 0.1μm UNDER PLATING:NICKEL 1.3μm	

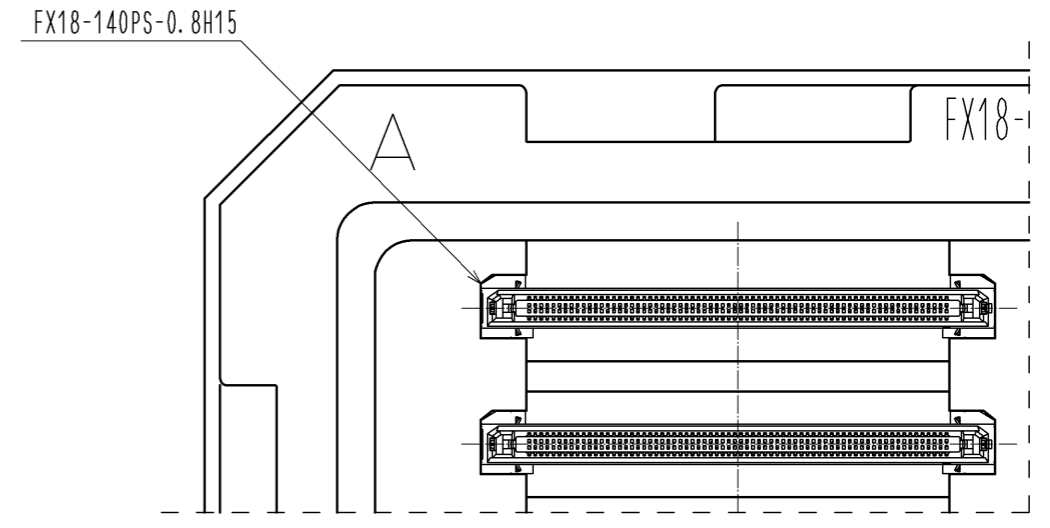
UNITS	SCALE	COUNT	DESCRIPTION OF REVISIONS	DESIGNED	CHECKED	DATE
mm	2 : 1	2	DIS-F-006933	TH. SANO	KI. HIROKAWA	13.08.05

APPROVED	CHECKED	DESIGNED	DRAWN	DRAWING NO.	PART NO.	CODE NO.
HS. OKAWA	KI. HIROKAWA	TH. SANO	TH. SANO	EDC3-349366-00	FX18-140PS-0.8H15	CL579-0054-9-00

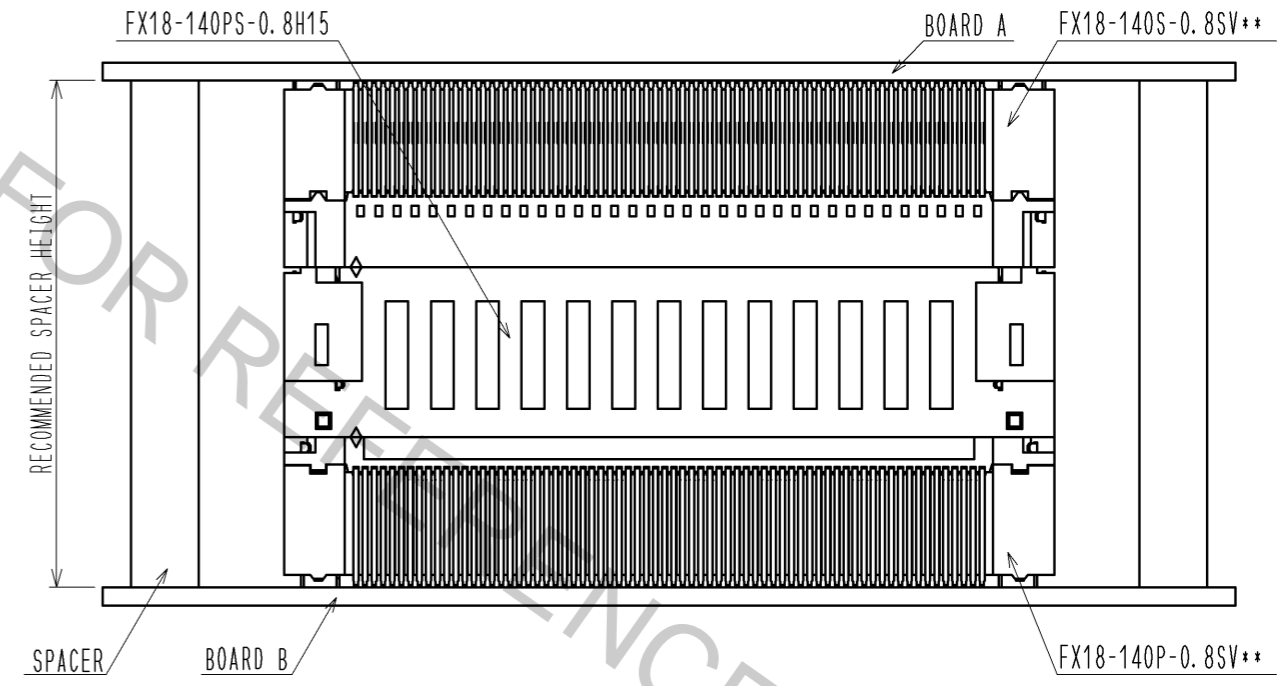
5 DRAWING FOR PACKING(1:2)



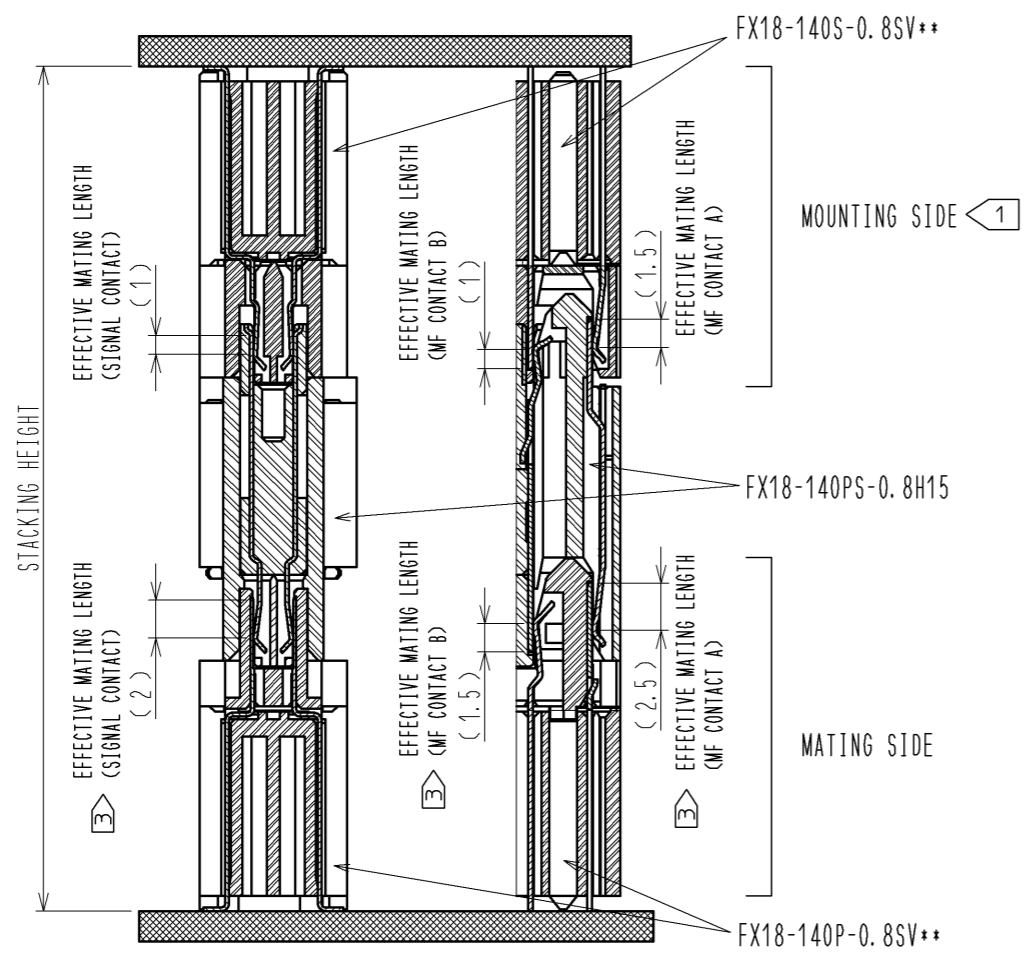
C(1:1)



8 RECOMMENDED SPACER HEIGHT(FREE)



CROSS SECTION OF MATING(FREE)



8 RECOMMENDED SPACER HEIGHT FOR EACH COMBINATION

STACKING HEIGHT	PLUG	INTERPOSER	RECEPTACLE	RECOMMENDED SPACER HEIGHT
25mm	FX18-140P-0.8SV	FX18-140PS-0.8H15	FX18-140S-0.8SV10	25.3±0.127
30mm	FX18-140P-0.8SV	FX18-140PS-0.8H15	FX18-140S-0.8SV15	30±0.127
35mm	FX18-140P-0.8SV	FX18-140PS-0.8H15	FX18-140S-0.8SV20	35±0.127
35mm	FX18-140P-0.8SV10	FX18-140PS-0.8H15	FX18-140S-0.8SV10	35.3±0.127
40mm	FX18-140P-0.8SV10	FX18-140PS-0.8H15	FX18-140S-0.8SV15	40±0.127
45mm	FX18-140P-0.8SV10	FX18-140PS-0.8H15	FX18-140S-0.8SV20	45±0.127

HRS

DRAWING NO.	EDC3-349366-00
PART NO.	FX18-140PS-0.8H15
CODE NO.	CL579-0054-9-00

2/2