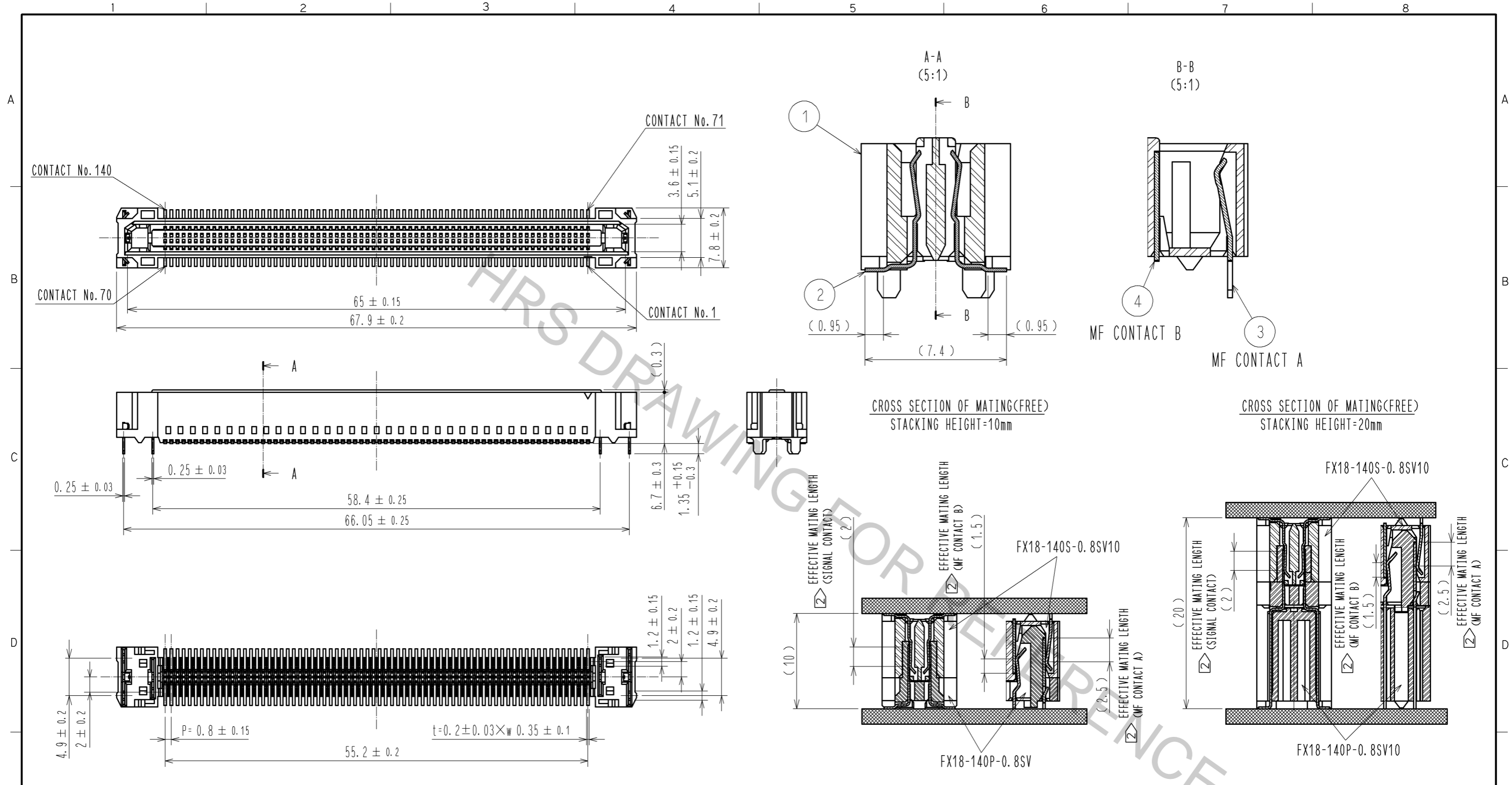


Aug.1.2016 Copyright 2016 HIROSE ELECTRIC CO., LTD. All Rights Reserved.



- NOTE 1 LEAD CO-PLANARITY IS 0.1mm MAX.  
 2 CONTACTS ARE 3 STEPS SEQUENTIAL. (MF CONTACT A=>SIGNAL CONTACT=>MF CONTACT B)  
 WHEN USING THIS SEQUENTIAL STRUCTURE, PLEASE AVOID ANGLED INSERTION.  
 3 MF CONTACT A AND MF CONTACT B CAN BE USED AS POWER SUPPLY CONTACT. (3A/PIN MAX)  
 4 IT SHOWS THE VACUUM PICKUP AREA. (SEE PAGE 2)  
 REMOVE THE MYLAR TAPE BEFORE MATING CONNECTORS.  
 5 THIS IS PACKAGED IN TRAY. (40pcs/TRAY)  
 6 BLEMISH AND HIT MARK CAN BE OCCURED THROUGH OUT THE MANUFACTURING PROCESS WHICH DOESN' T AFFECT QUALITY LEVEL.  
 7 THE DIMENSIONS IN PARENTHESES ARE FOR REFERENCES.

6	POLYIMIDE				
5	POLYSTYRENE				
4	COPPER ALLOY	CONTACT AREA:GOLD 0.1 μm			
		LEAD AREA:TIN-PLATING 1 μm			
3	COPPER ALLOY	UNDER PLATING:NICKEL 1.3 μm			
		CONTACT AREA:GOLD 0.1 μm			
2	COPPER ALLOY	LEAD AREA:TIN-PLATING 1 μm			
		UNDER PLATING:NICKEL 1.3 μm			
1	POLYAMIDE	BLACK UL94V-0			

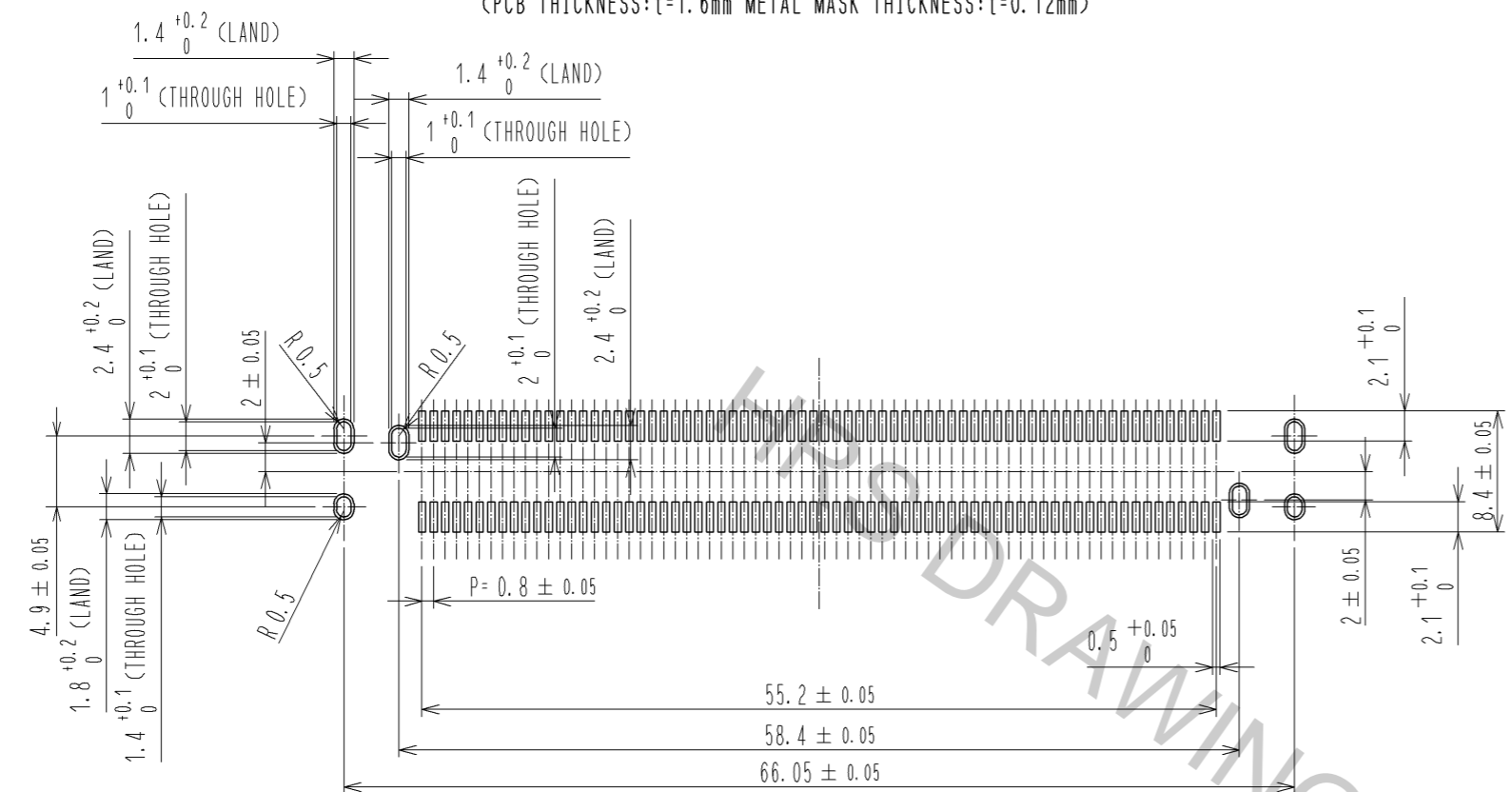
NO.	MATERIAL	FINISH	REMARKS	NO.	MATERIAL	FINISH	REMARKS
2	COPPER ALLOY		CONTACT AREA:GOLD 0.1 μm LEAD AREA:TIN-PLATING 1 μm UNDER PLATING:NICKEL 1.3 μm	3	COPPER ALLOY		CONTACT AREA:GOLD 0.1 μm LEAD AREA:TIN-PLATING 1 μm UNDER PLATING:NICKEL 1.3 μm

UNITS	SCALE	COUNT	DESCRIPTION OF REVISIONS	DESIGNED	CHECKED	DATE
mm	2 : 1	△				
APPROVED : HS. OKAWA			13.03.27	DRAWING NO. EDC3-349392-00		
CHECKED : KI. HIROKAWA			13.03.27	PART NO. FX18-140S-0.8SV10		
DESIGNED : TH. SANO			13.03.27	CODE NO. CL579-0060-1-00		
DRAWN : TH. SANO			13.03.27	1/2		

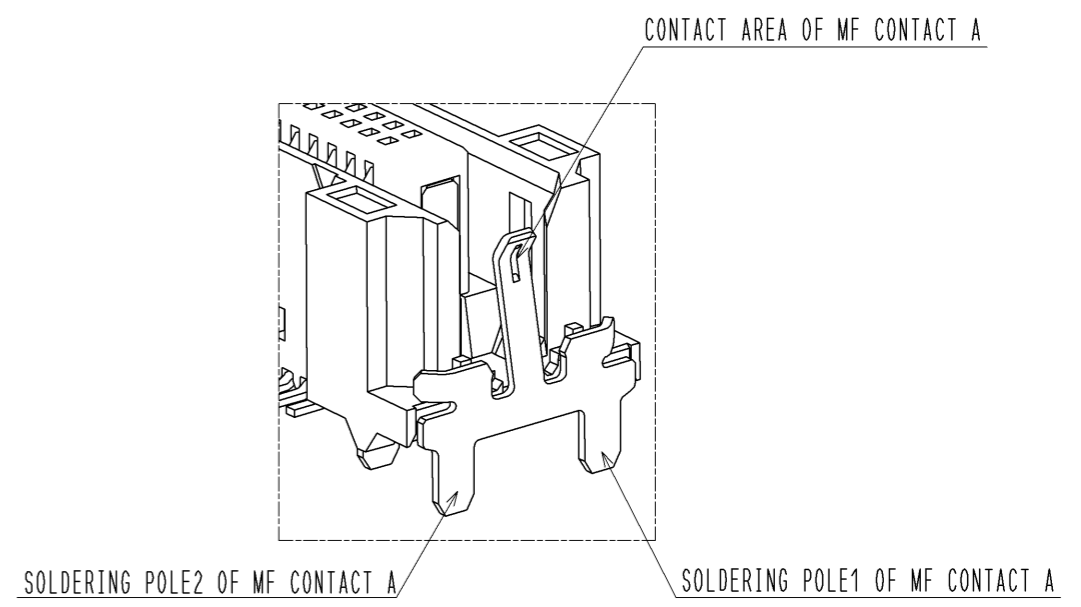
Aug.1.2016 Copyright 2016 HIROSE ELECTRIC CO., LTD. All Rights Reserved.

RECOMMENDED LAND PATTERN DIMENSION OF PCB(2:1)  
(PCB THICKNESS: t=1.6mm METAL MASK THICKNESS: t=0.12mm)

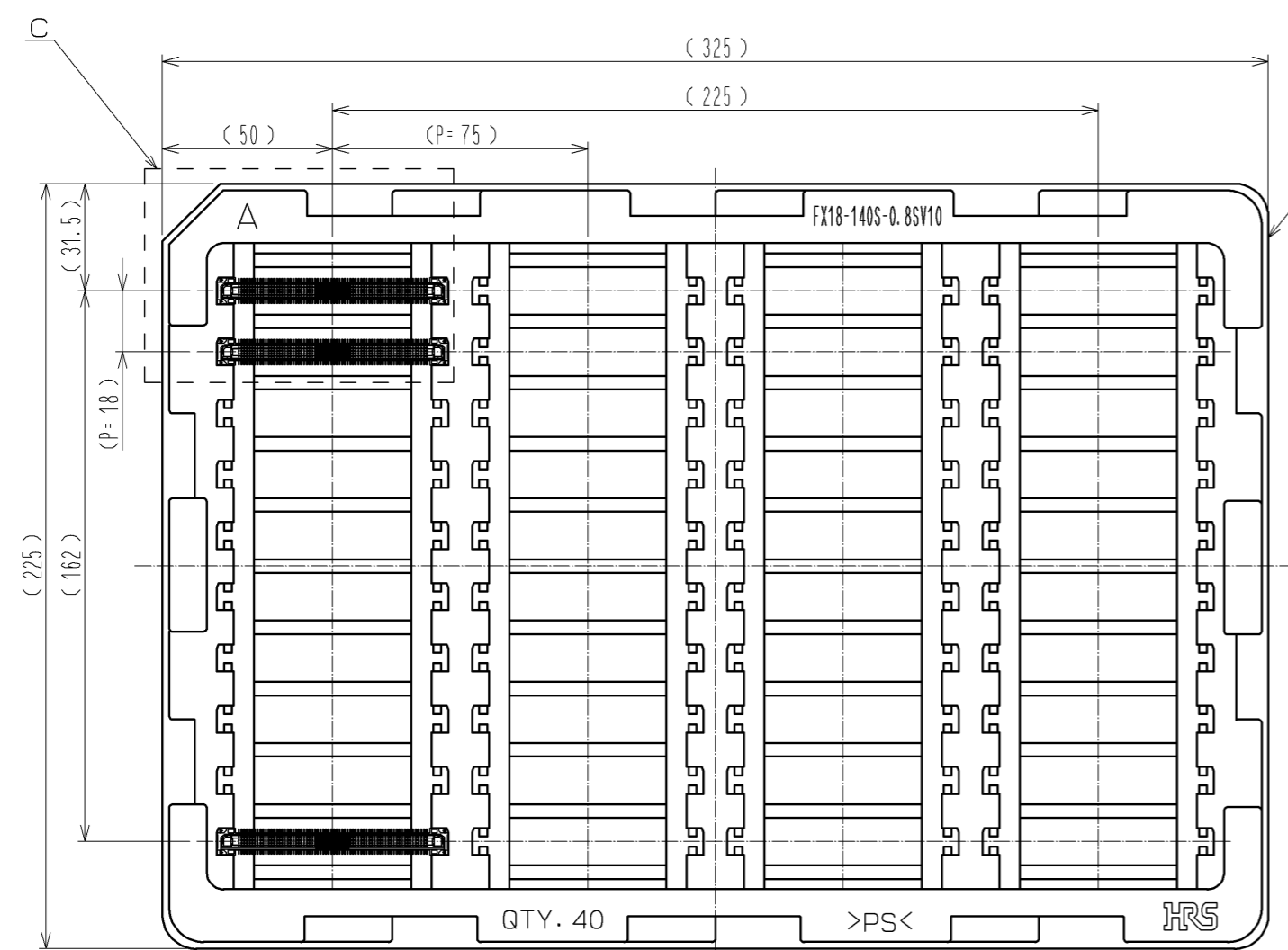


5 DRAWING FOR PACKING(1:2)

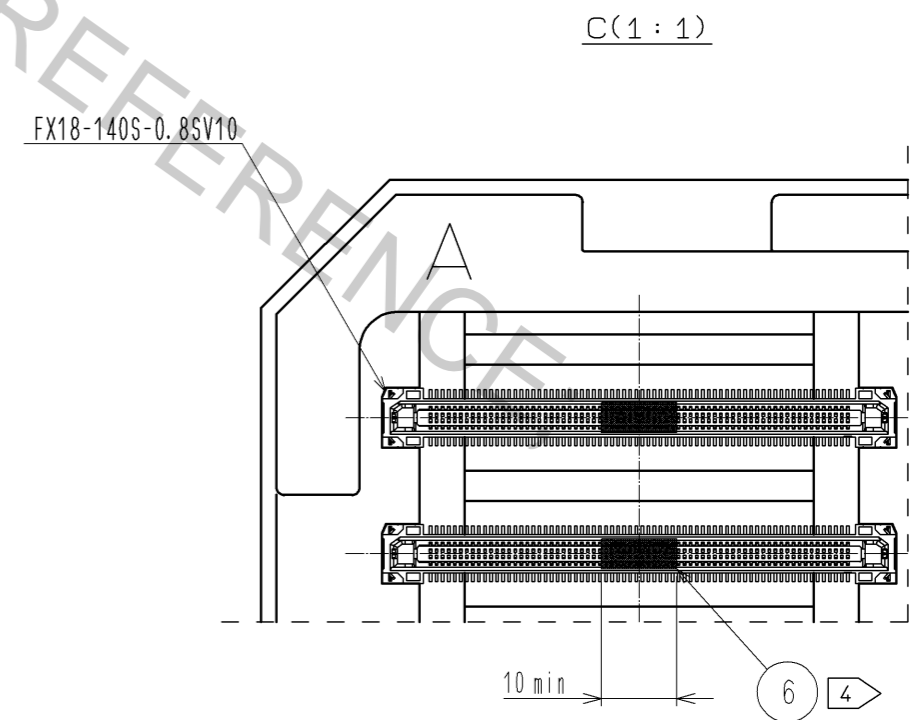
8 CONFIGURATION OF MF CONTACT A



NOTE 8 SOLDERING LEAD OF MF CONTACT A SPLITS INTO TWO POLES. BE SURE TO CONNECT TO THE SAME CIRCUIT.



QTY. 40 >PS< HRS



<b>HRS</b>	DRAWING NO.	EDC3-349392-00
	PART NO.	FX18-140S-0.8SV10
	CODE NO.	CL579-0060-1-00
		△ 2/2