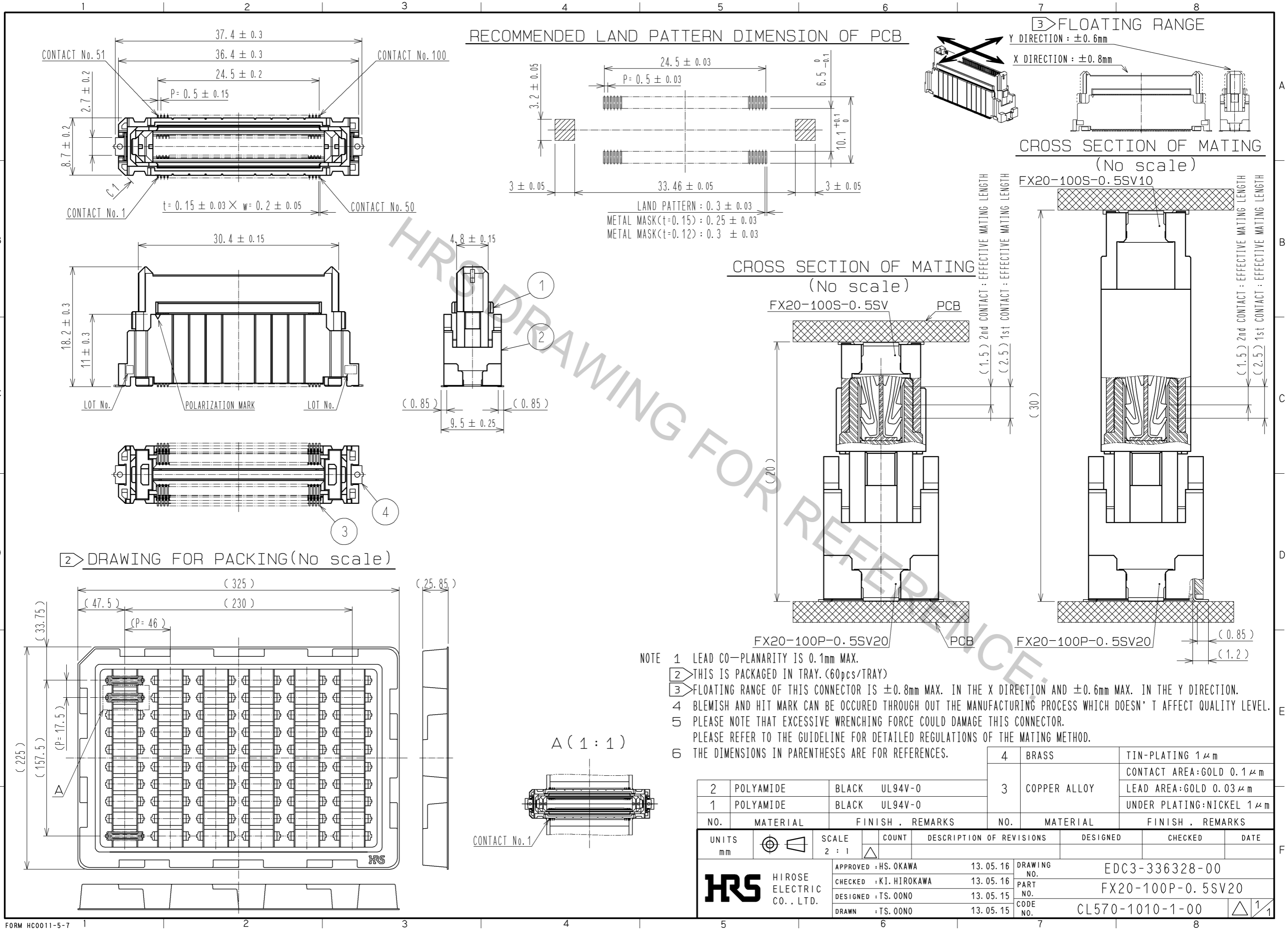


Aug.1.2016 Copyright 2016 HIROSE ELECTRIC CO., LTD. All Rights Reserved.



2	POLYAMIDE	BLACK	UL94V-0	4	BRASS	TIN-PLATING $1 \mu\text{m}$		
1	POLYAMIDE	BLACK	UL94V-0	3	COPPER ALLOY	CONTACT AREA: GOLD $0.1 \mu\text{m}$		
						LEAD AREA: GOLD $0.03 \mu\text{m}$		
						UNDER PLATING: NICKEL $1 \mu\text{m}$		
NO.	MATERIAL	FINISH	REMARKS	NO.	MATERIAL	FINISH . REMARKS		
UNITS		SCALE	COUNT	DESCRIPTION OF REVISIONS		DESIGNED	CHECKED	DATE
mm		2 : 1	Δ					
HRS HIROSE ELECTRIC CO., LTD.		APPROVED : HS. OKAWA	13.05.16	DRAWING NO.		EDC3-336328-00		
		CHECKED : KI. HIROKAWA	13.05.16	PART NO.		FX20-100P-0.5SV20		
		DESIGNED : TS. OONO	13.05.15	CODE NO.		CL570-1010-1-00		Δ 1/1
		DRAWN : TS. OONO	13.05.15					