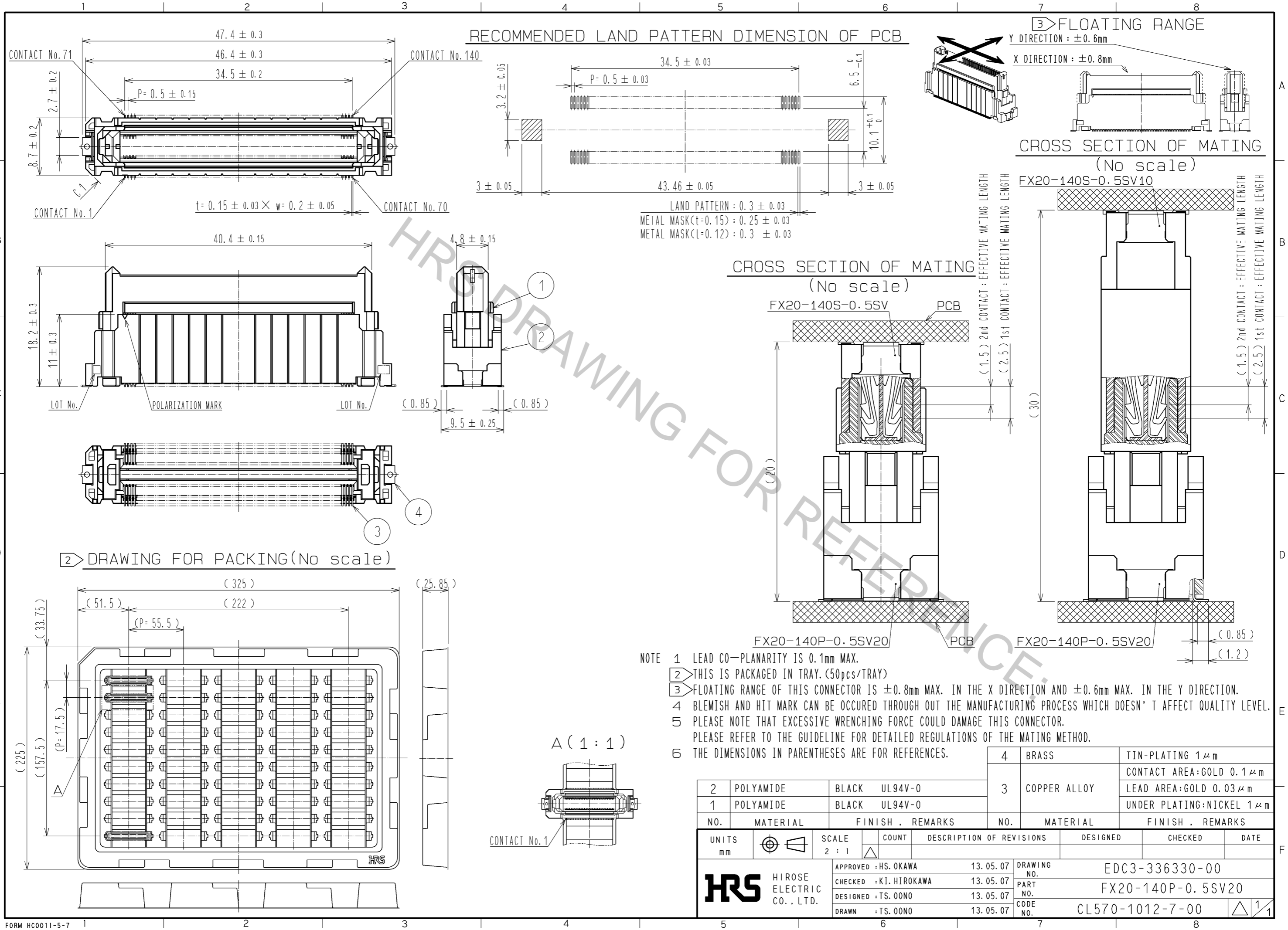


Aug.1.2016 Copyright 2016 HIROSE ELECTRIC CO., LTD. All Rights Reserved.



- NOTE
- 1 LEAD CO-PLANARITY IS 0.1mm MAX.
 - 2 THIS IS PACKAGED IN TRAY. (50pcs/TRAY)
 - 3 FLOATING RANGE OF THIS CONNECTOR IS ± 0.8 mm MAX. IN THE X DIRECTION AND ± 0.6 mm MAX. IN THE Y DIRECTION.
 - 4 BLEMISH AND HIT MARK CAN BE OCCURED THROUGH OUT THE MANUFACTURING PROCESS WHICH DOESN' T AFFECT QUALITY LEVEL.
 - 5 PLEASE NOTE THAT EXCESSIVE WRENCHING FORCE COULD DAMAGE THIS CONNECTOR. PLEASE REFER TO THE GUIDELINE FOR DETAILED REGULATIONS OF THE MATING METHOD.
 - 6 THE DIMENSIONS IN PARENTHESES ARE FOR REFERENCES.

2	POLYAMIDE	BLACK	UL94V-0	4	BRASS	TIN-PLATING $1 \mu\text{m}$		
1	POLYAMIDE	BLACK	UL94V-0	3	COPPER ALLOY	CONTACT AREA:GOLD $0.1 \mu\text{m}$		
						LEAD AREA:GOLD $0.03 \mu\text{m}$		
						UNDER PLATING:NICKEL $1 \mu\text{m}$		
NO.	MATERIAL	FINISH	REMARKS	NO.	MATERIAL	FINISH . REMARKS		
UNITS		SCALE	COUNT	DESCRIPTION OF REVISIONS		DESIGNED	CHECKED	DATE
mm		2 : 1	Δ					
APPROVED : HS. OKAWA				13.05.07	DRAWING NO. EDC3-336330-00			
CHECKED : KI. HIROKAWA				13.05.07	PART NO. FX20-140P-0.5SV20			
DESIGNED : TS. OONO				13.05.07	CODE NO. CL570-1012-7-00			
DRAWN : TS. OONO				13.05.07				