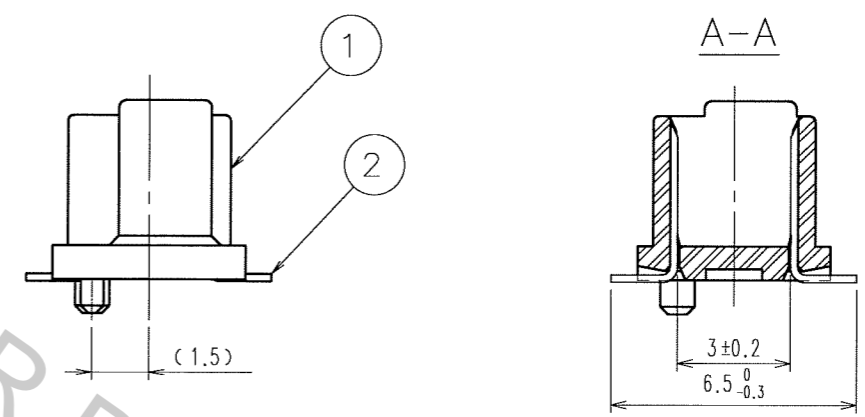
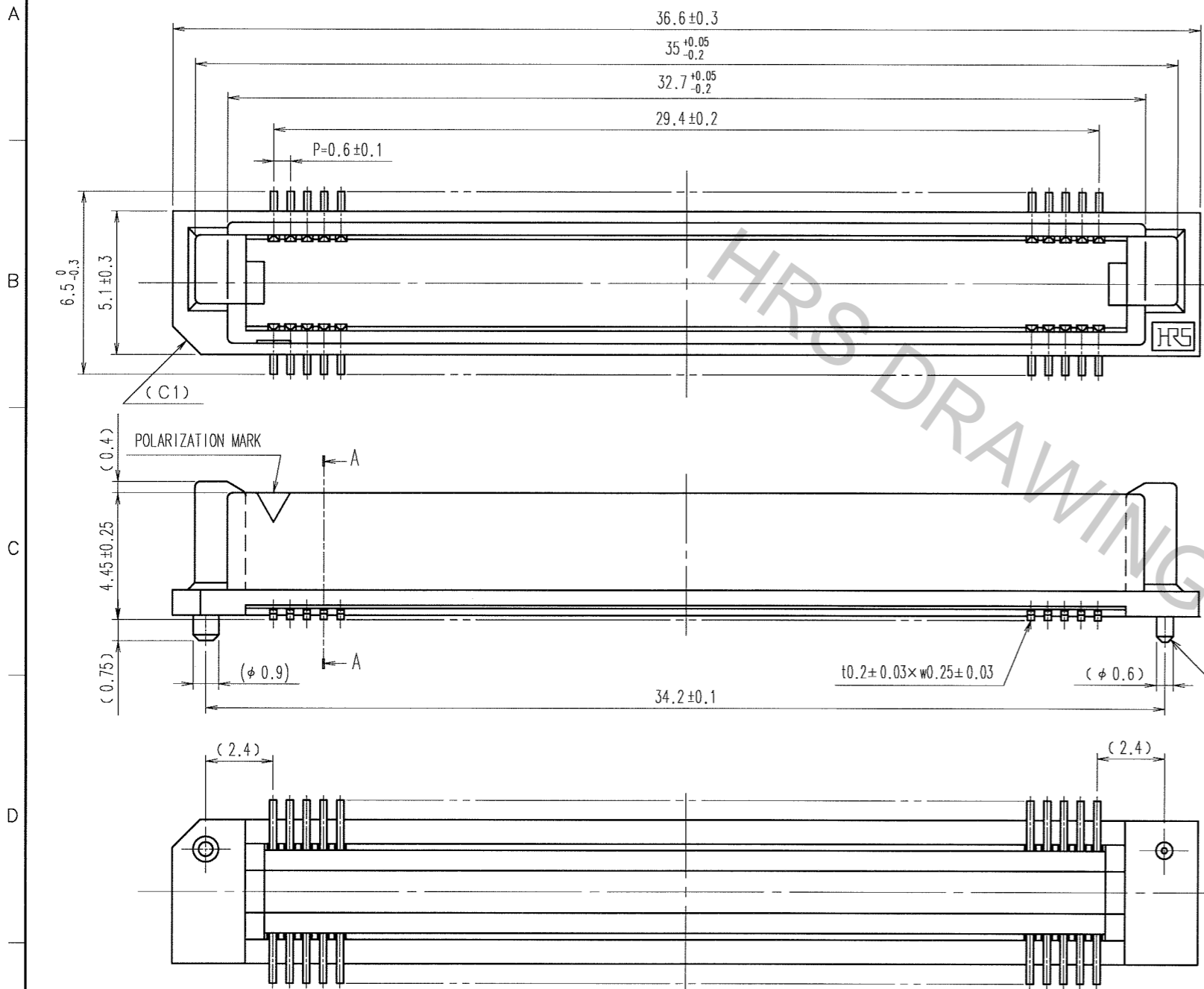


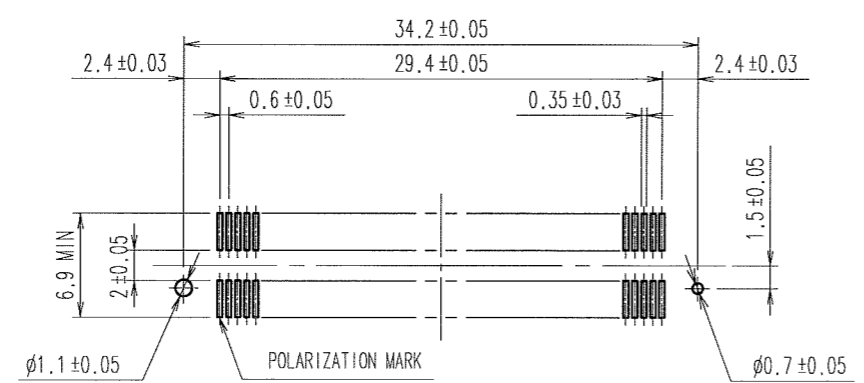
Aug.1.2016 Copyright 2016 HIROSE ELECTRIC CO., LTD. All Rights Reserved.

COUNT	DESCRIPTION OF REVISIONS	BY	CHKD	DATE	COUNT	DESCRIPTION OF REVISIONS	BY	CHKD	DATE
△					△				
△					△				
△					△				



NOTE. 1 LEAD CO-PLANARITY SHALL BE 0.1mm MAX.
 2 FOR MODIFICATION, ETC., PREVENTIVE HOLE FOR SINK MARK MAY BE ADDED ACCORDING TO CIRCUMSTANCES.
 3 THE DIMENSIONS IN PARENTHESES ARE FOR REFERENCE.

RECOMMENDED LAND PATTERN DIMENSION OF PCB (MOUNTING SIDE) (2:1)



1	POLYPHENYLENE SULFIDE	LIGHT BROWN UL94V-0	2	PHOSPHOR BRONZE	CONTACT AREA: GOLD 0.1μ m min. LEAD AREA: GOLD PLATING FLASH UNDER PLATING: NICKEL 1μ m min.
NO.	MATERIAL	FINISH, REMARKS	NO.	MATERIAL	FINISH, REMARKS
CODE NO. (OLD) CL			DRAWN	DESIGNED	CHECKED
			A. SUZUKAWA	K. Doi	K. Ogawa
			05.11.05	'05.11.09	'05.11.09
			APPROVED	RELEASED	
			H. Okawa		
			05.11.09		
DRAWING NO. EDC3-150823-25			PART NO. FX8C-100P-SV(71)		
SCALE 5 : 1			CODE NO. CL578-0505-0-71		
UNITS mm			1/1		
HRS HIROSE ELECTRIC CO., LTD.					

TO
PCK