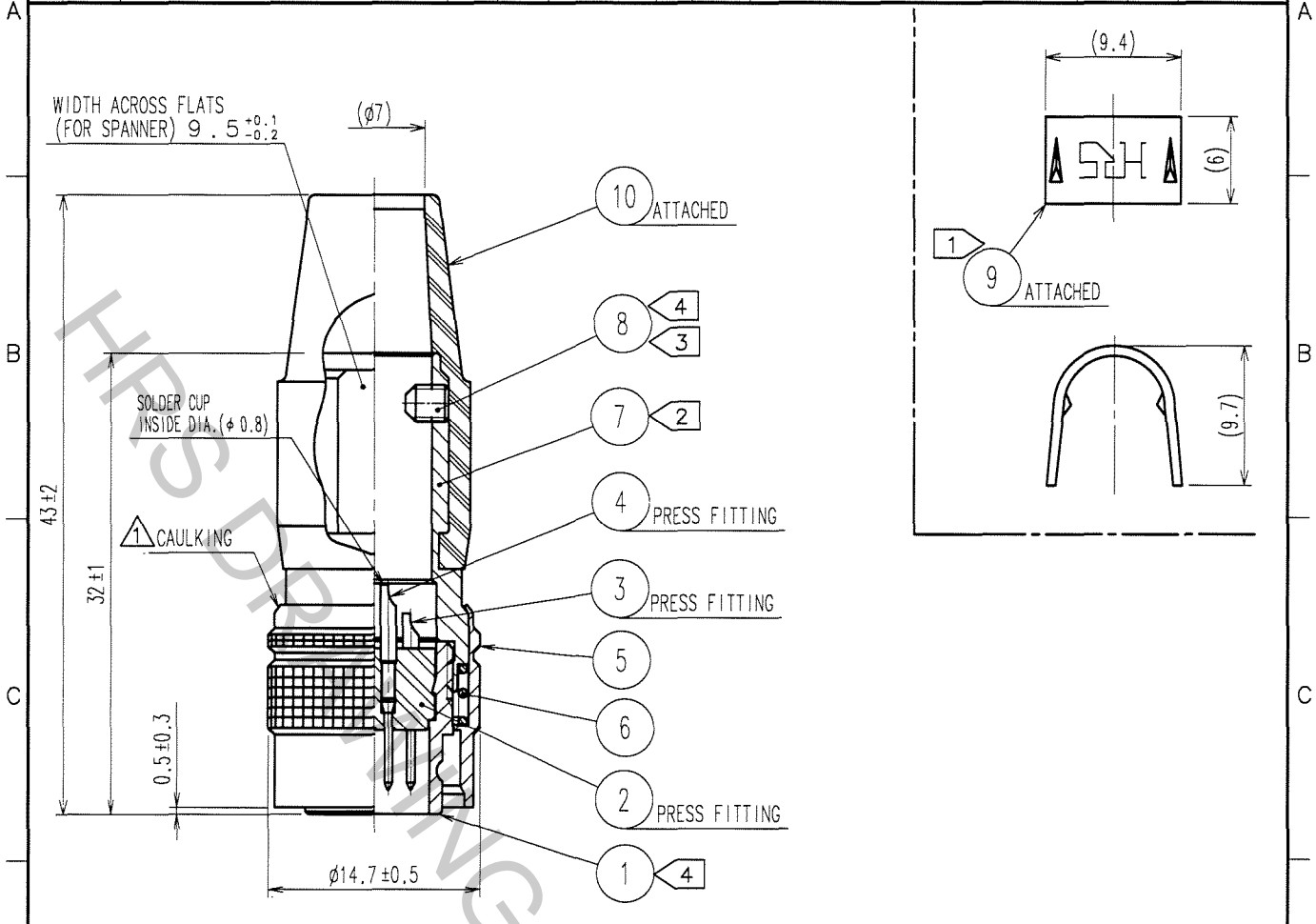


1		2			3			4		
COUNT	DESCRIPTION OF REVISIONS	BY	CHKD	DATE	COUNT	DESCRIPTION OF REVISIONS	BY	CHKD	DATE	
1	DIS-C-000409	D.M.H.S		06.12.19						



- NOTE
- ① HAND CRIMPING TOOL, REF. NO. ⑨: HR10A-TC-02 (CL150-0041-2)
THE HOLE DIAMETER FOR CRIMPING: $\phi 7.0$
 - ② THE RECOMMENDED CLAMP TORQUE, REF. NO. ⑦: 2-2.5 N·m.
 - ③ ACROSS FLATS HEXAGON HEAD OF REF. NO. ⑧: 1.27
THE RECOMMENDED CLAMP TORQUE, REF. NO. ⑧: 0.3-0.4 N·m.
 - ④ LOCTITE 242, HENKEL JAPAN OR EQUIVALENT IS RECOMMENDED TO PREVENT REF. NO. ① AND ⑧ FROM LOOSENING.
 - ⑤ ONE EXAMPLE OF THE ROTATION OF REF. NO. ⑦ TO REF. NO. ① IS SHOWN.

5	BRASS	MATTE FINISH NICKEL PLATED	10	CR	(BLACK)
4	BRASS	SILVER PLATING 2 μ m min.	9	BRASS	
3	BRASS		8	STEEL	NICKEL PLATING
2	POLYAMIDE	(BLACK) UL94V-0	7	BRASS	NICKEL PLATING
1	ZINC ALLOY	MATTE FINISH NICKEL PLATED	6	STEEL	NICKEL PLATING

NO.	MATERIAL	FINISH, REMARKS	NO.	MATERIAL	FINISH, REMARKS
CODE NO. (OLD) CL			DRAWN	DESIGNED	CHECKED
			D.MATSUNE	D.MATSUNE	E.KUNII
			'05.10.01	'05.10.01	'05.10.13
			APPROVED	RELEASED	
			M.SATO		
			'05.10.14		

 SACLE 2 : 1	DRAWING NO.	PART NO.
	EDC4-021366-73	HR10A-10P-10P(73)
UNITS mm	 HIROSE ELECTRIC CO., LTD.	CODE NO. CL110-0407-3-73

TO
R