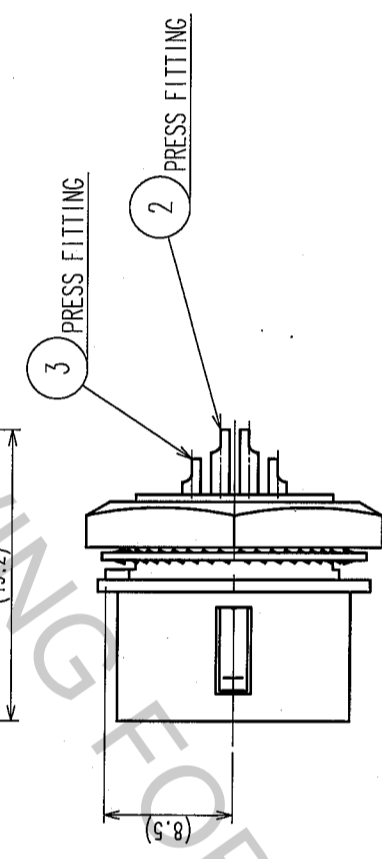
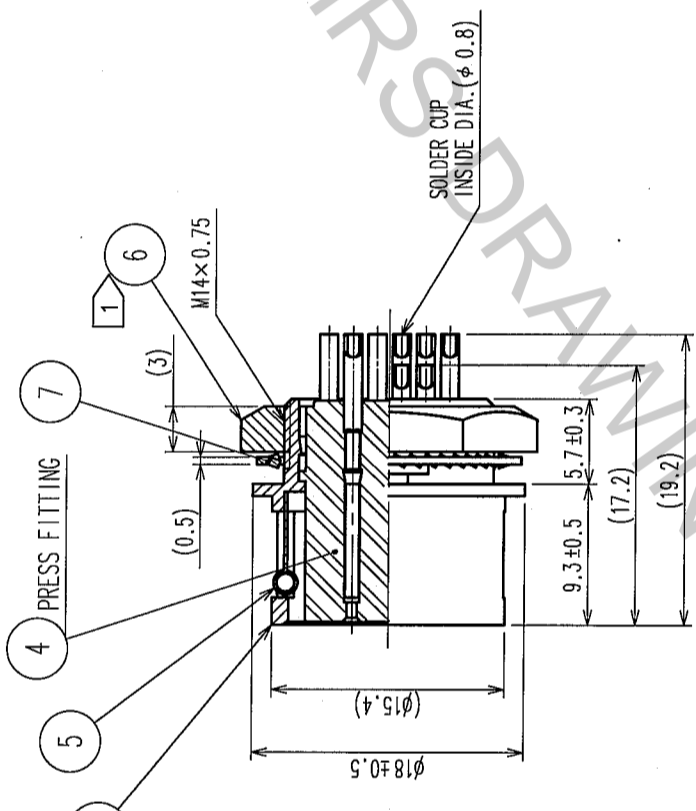
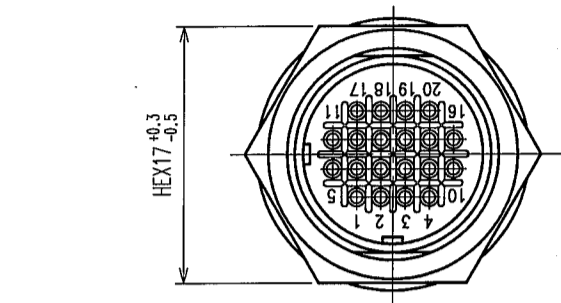
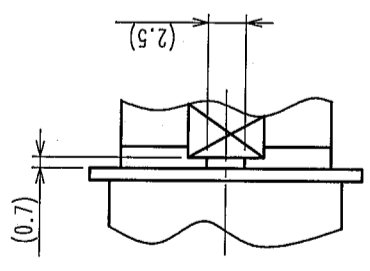


COUNT	DESCRIPTION OF REVISIONS	BY	CHKD	DATE	COUNT	DESCRIPTION OF REVISIONS	BY	CHKD	DATE



NOTE ① RECOMMENDED CLAMP TORQUE OF REF. NO. ⑥ : 2-2.5 N · m.
 LOCTITE 242, HENKEL JAPAN OR EQUIVALENT IS RECOMMENDED TO
 PREVENT REF. NO. ⑥ FROM LOOSENING.

B DETAIL OF MOUNTING GUIDE



PANEL CUTOUT
 t = 0.8 ~ 1.5

NO.	MATERIAL	FINISH, REMARKS	NO.	MATERIAL	FINISH, REMARKS
4	POLYAMIDE	(BLACK) UL94V-0	7	PHOSPHOR BRONZE	NICKEL PLATING
3	BERYLLIUM COPPER	SILVER PLATING 2μ m min.	6	BRASS	NICKEL PLATING
2	BERYLLIUM COPPER	MATTE FINISH NICKEL PLATING	5	STAINLESS STEEL	
1	ZINC ALLOY				

CODE NO. (COLD)	DRAWN	DESIGNED	CHECKED	APPROVED	RELEASED
	D. Matsume	D. Matsume	E. Kuroki	K. Sato	
	05.10.01	05.10.01	05.10.03	05.10.14	

DRAWING NO.	PART NO.
EDC3-045401-73	HR10A-13R-20S(73)

SCALE	UNITS
2 : 1	mm