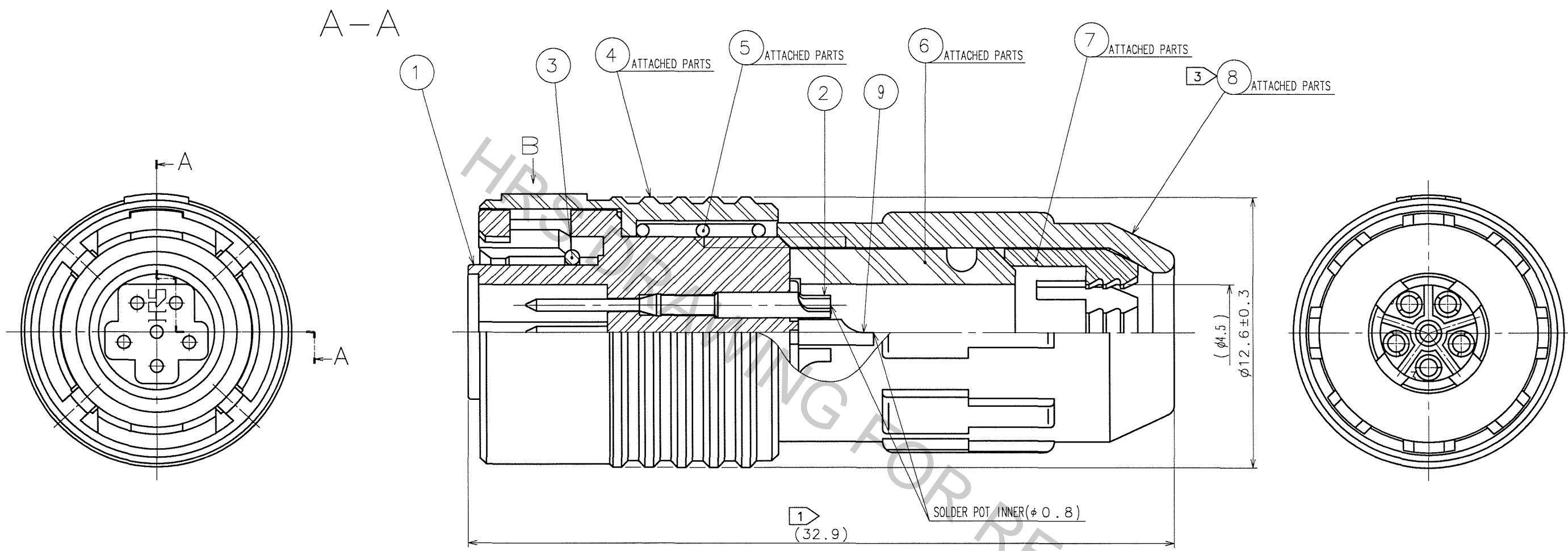
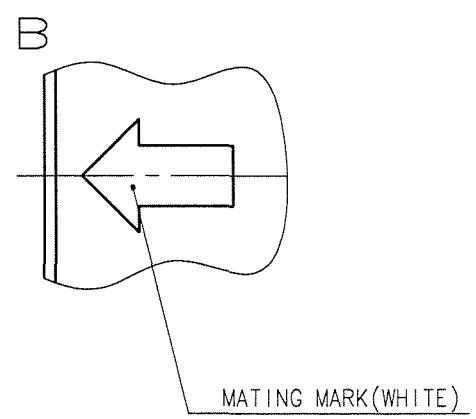


Aug.1.2016 Copyright 2016 HIROSE ELECTRIC CO., LTD. All Rights Reserved.

COUNT	DESCRIPTION OF REVISIONS	BY	CHKD	DATE	COUNT	DESCRIPTION OF REVISIONS	BY	CHKD	DATE
1	DIS-C-000490	T.H.E.K		07.01.31					



- NOTES
- ① TOTAL LENGTH BECOMES 30.3±1 WHEN ⑧ IS SCREWED INTO ① COMPLETERY.
  - ② TABLE FOR ASSEMBLY AND SOLDERING IS AVAILABLE HR30-6P-6P-T01.
  - ③ THE RECOMMENDED CLAMP TORQUE OF REF. NO.⑧ TO BE 0.5N·m.  
SPACER FOR ASSEMBLY IS AVAILABLE HR30-6P-T02.
  - ④ SURFACE PLATING : GOLD PLATING 0.2μm min.  
UNDER PLATING : NICKEL PLATING 2μm min.
  - △⑤ THE CABLE PULL AND TWISTING STRENGTH AND OTHER CHARACTERISTICS MAY DIFFER,  
DEPENDING ON THE CABLE STRUCTURE.  
PLEASE CONFIRM BEFORE THE USE.



5	STAINLESS STEEL			9	BRASS	④
4	PBT	(BLACK)	UL94V-0	8	PBT	(BLACK) UL94V-0
3	SIR	(RED)		7	POLYACETAL	(NATURAL)
2	BRASS	④		6	CR	(BLACK)
1	PPS	(BLACK)	UL94V-0			

NO.	MATERIAL	FINISH, REMARKS	NO.	MATERIAL	FINISH, REMARKS
CODE NO. (OLD)			DRAWN	DESIGNED	CHECKED
			E. KUNII	E. KUNII	M. SATO
			'05.10.13	'05.10.13	'05.10.17

SCALE	5 : 1	DRAWING NO.	EDC3-112568-71	PART NO.	HR30-6PA-6P(71)
UNITS	mm	HIROSE ELECTRIC CO., LTD		CODE NO.	CL130-0020-8-71

TO  
R