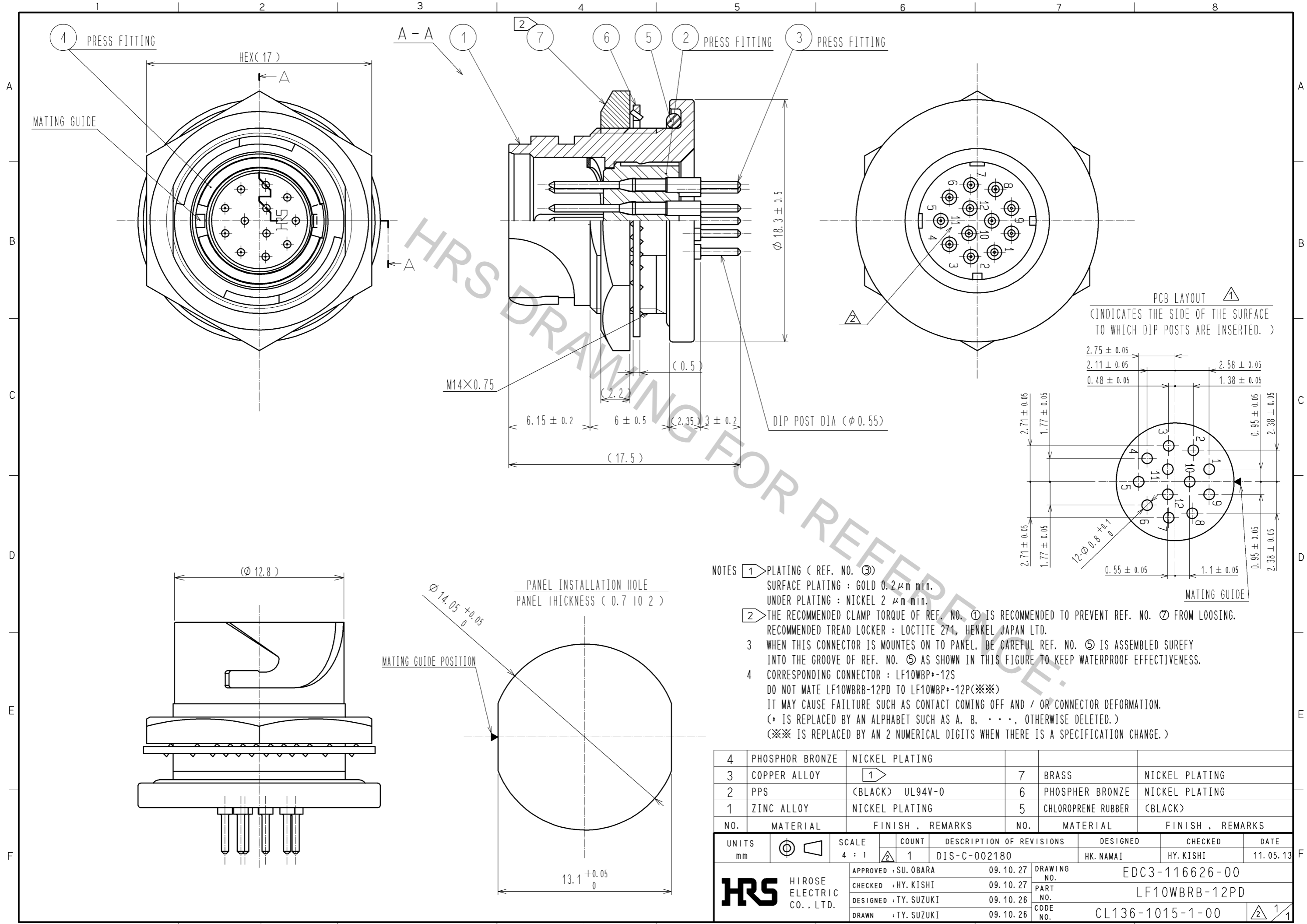


Aug.1.2016 Copyright 2016 HIROSE ELECTRIC CO., LTD. All Rights Reserved.



HRS DRAWING FOR REFERENCE ONLY

- NOTES
- ① PLATING ( REF. NO. ③ )  
SURFACE PLATING : GOLD 0.2μm min.  
UNDER PLATING : NICKEL 2 μm min.
  - ② THE RECOMMENDED CLAMP TORQUE OF REF. NO. ① IS RECOMMENDED TO PREVENT REF. NO. ⑦ FROM LOOSING.  
RECOMMENDED TREAD LOCKER : LOCTITE 271, HENKEL JAPAN LTD.
  - ③ WHEN THIS CONNECTOR IS MOUNTED ON TO PANEL, BE CAREFUL REF. NO. ⑤ IS ASSEMBLED SUREFY INTO THE GROOVE OF REF. NO. ⑤ AS SHOWN IN THIS FIGURE TO KEEP WATERPROOF EFFECTIVENESS.
  - ④ CORRESPONDING CONNECTOR : LF10WBP+-12S  
DO NOT MATE LF10WBRB-12PD TO LF10WBP+-12P(※※)  
IT MAY CAUSE FAILURE SUCH AS CONTACT COMING OFF AND / OR CONNECTOR DEFORMATION.  
(\* IS REPLACED BY AN ALPHABET SUCH AS A, B, . . . , OTHERWISE DELETED.)  
(※※ IS REPLACED BY AN 2 NUMERICAL DIGITS WHEN THERE IS A SPECIFICATION CHANGE.)

4	PHOSPHOR BRONZE	NICKEL PLATING			
3	COPPER ALLOY	①	7	BRASS	
2	PPS	(BLACK) UL94V-0	6	PHOSPHOR BRONZE	
1	ZINC ALLOY	NICKEL PLATING	5	CHLOROPRENE RUBBER	
		(BLACK)			
NO.	MATERIAL	FINISH . REMARKS	NO.	MATERIAL	FINISH . REMARKS

UNITS mm		SCALE 4 : 1	COUNT 1	DESCRIPTION OF REVISIONS DIS-C-002180	DESIGNED HK. NAMAI	CHECKED HY. KISHI	DATE 11.05.13
<b>HRS</b> HIROSE ELECTRIC CO., LTD.		APPROVED : SU. OBARA	09.10.27	DRAWING NO. EDC3-116626-00			
		CHECKED : HY. KISHI	09.10.27	PART NO. LF10WBRB-12PD			
		DESIGNED : TY. SUZUKI	09.10.26	CODE NO. CL136-1015-1-00			
		DRAWN : TY. SUZUKI	09.10.26			②/1	