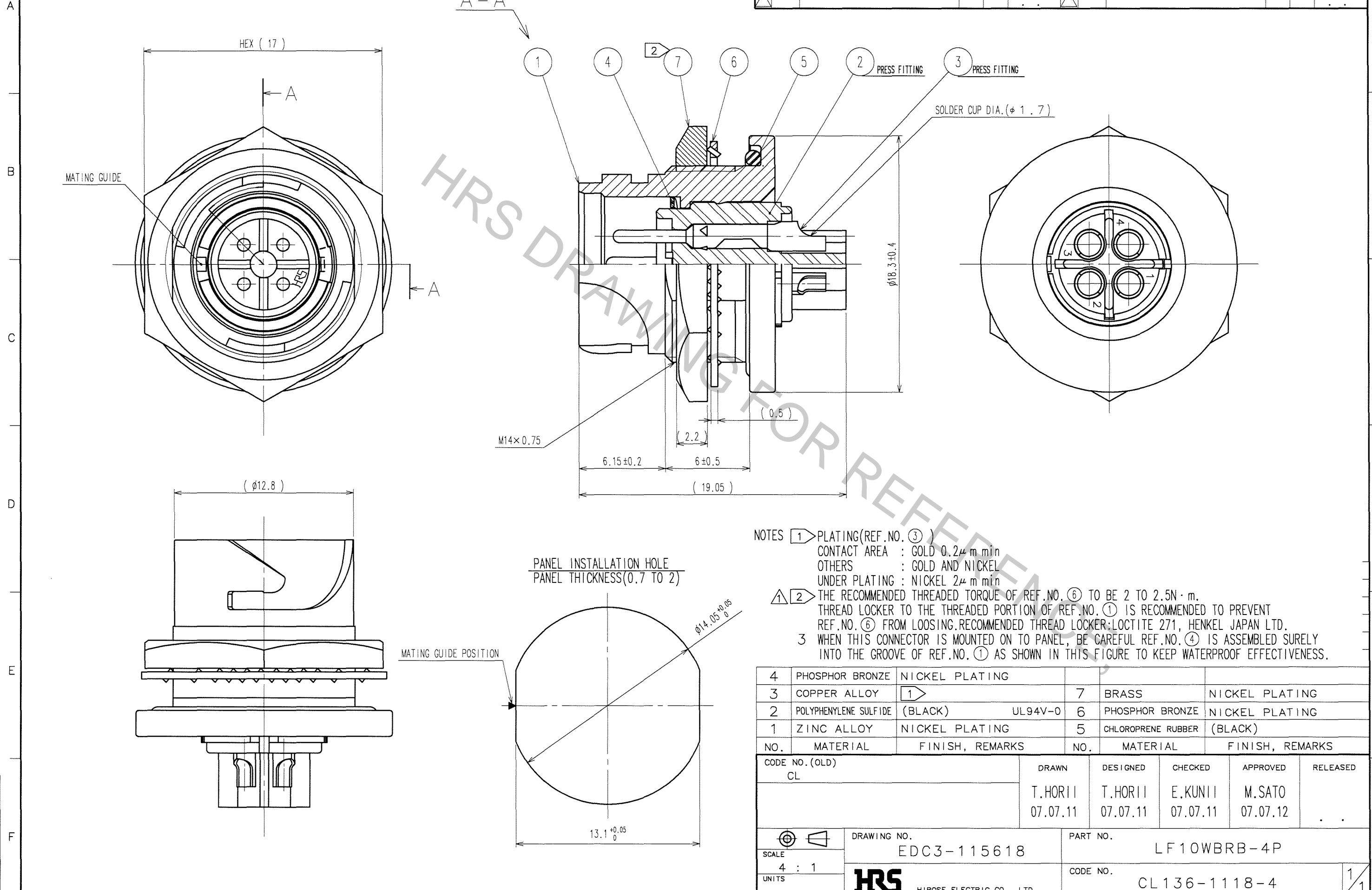


Aug.1.2016 Copyright 2016 HIROSE ELECTRIC CO., LTD. All Rights Reserved.

COUNT	DESCRIPTION OF REVISIONS	BY	CHKD	DATE	COUNT	DESCRIPTION OF REVISIONS	BY	CHKD	DATE
1	DIS-C-000683	T.H.E.K.		07.07.30					



NOTES

- PLATING (REF. NO. ③)
 - CONTACT AREA : GOLD 0.2 μ m min
 - OTHERS : GOLD AND NICKEL
 - UNDER PLATING : NICKEL 2 μ m min
- THE RECOMMENDED THREADED TORQUE OF REF. NO. ⑥ TO BE 2 TO 2.5N · m. THREAD LOCKER TO THE THREADED PORTION OF REF. NO. ① IS RECOMMENDED TO PREVENT REF. NO. ⑥ FROM LOSING. RECOMMENDED THREAD LOCKER: LOCTITE 271, HENKEL JAPAN LTD.
- WHEN THIS CONNECTOR IS MOUNTED ON TO PANEL, BE CAREFUL REF. NO. ④ IS ASSEMBLED SURELY INTO THE GROOVE OF REF. NO. ① AS SHOWN IN THIS FIGURE TO KEEP WATERPROOF EFFECTIVENESS.

NO.	MATERIAL	FINISH, REMARKS	NO.	MATERIAL	FINISH, REMARKS
4	PHOSPHOR BRONZE	NICKEL PLATING	7	BRASS	NICKEL PLATING
3	COPPER ALLOY	①	6	PHOSPHOR BRONZE	NICKEL PLATING
2	POLYPHENYLENE SULFIDE	(BLACK) UL94V-0	5	CHLOROPRENE RUBBER	(BLACK)
1	ZINC ALLOY	NICKEL PLATING			

CODE NO. (OLD) CL	DRAWN T.HORII 07.07.11	DESIGNED T.HORII 07.07.11	CHECKED E.KUNII 07.07.11	APPROVED M.SATO 07.07.12	RELEASED .
----------------------	------------------------------	---------------------------------	--------------------------------	--------------------------------	---------------

SCALE 4 : 1	DRAWING NO. EDC3-115618	PART NO. LF10WBRB-4P
UNITS mm	HRS HIROSE ELECTRIC CO., LTD	CODE NO. CL136-1118-4

TO
R