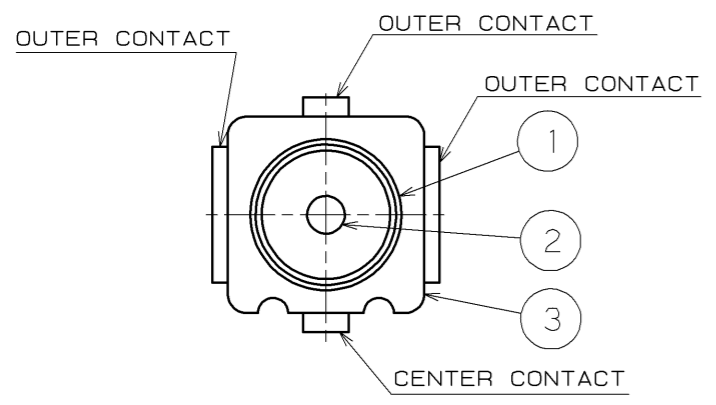
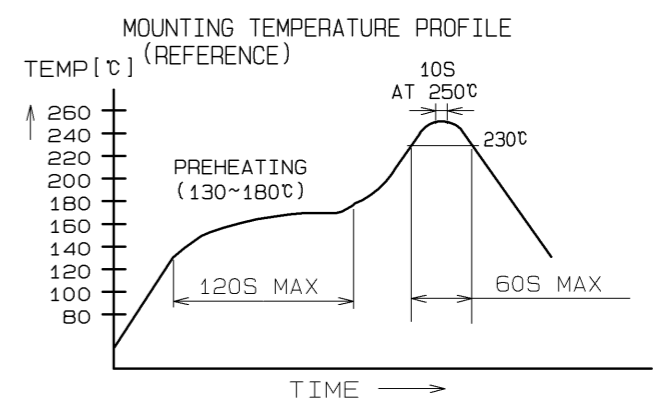
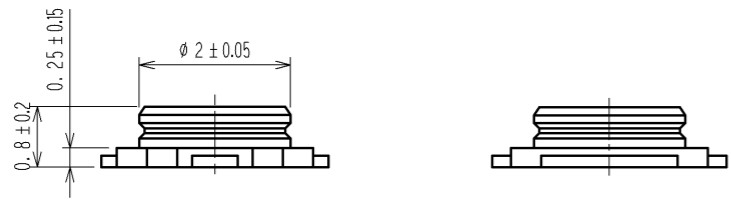
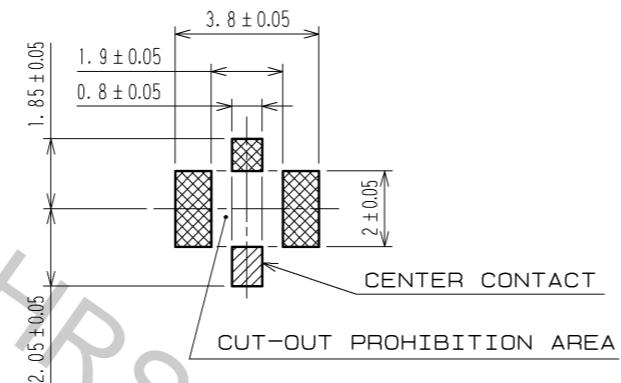


Aug.1.2016 Copyright 2016 HIROSE ELECTRIC CO., LTD. All Rights Reserved.

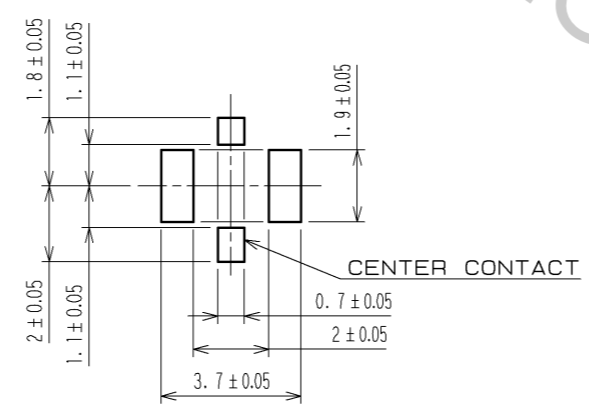
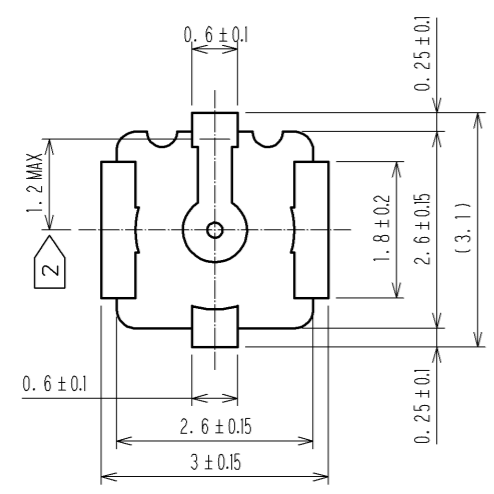


RECOMMENDED PC BOARD PATTERN DRAWING (5:1)



NOTE
MOUNTING TEMPERATURE PROFILE VARIES ACCORDING TO BOARD SIZE, SOLDER TYPE APPLIED AND SOLDER THICKNESS.

RECOMMENDED METAL MASK PATTERN DRAWING (5:1)



THICKNESS: 0.1mm/0.12mm

NOTES:

- 1: THE QUANTITY OF N.FL-R-SMT-1(01) IS 100 CONNECTORS PER PACK.
- 2: THIS DIMENSION SHOWS THE ALLOWABLE RANGE THAT THE RESIN IS PUT OVER THE CENTER CONTACT.
- 3: LEAD CO-PLANARITY SHALL BE 0.1MAX.
- 4: FOR THE POSSIBILITY OF BREAKAGE OR DEFORMATION DO NOT MATE THIS CONNECTOR WITH PARTNER, N.FL-LP-040 BEFORE MOUNTING ON PC BOARD.

RoHS COMPLIANT

2	BRASS	GOLD PLATING			
1	PHOSPHOR BRONZE	SILVER PLATING	3	LCP	(BLACK), UL94V-0
NO.	MATERIAL	FINISH, REMARKS	NO.	MATERIAL	FINISH, REMARKS
UNITS mm		SCALE 10:1		COUNT △	DESCRIPTION OF REVISIONS
HRS HIROSE ELECTRIC CO., LTD.		APPROVED : MH. YAMANE	08.07.01	DRAWING NO. EDC3-310945-01	
		CHECED : NK. NINOMIYA	08.07.01	PART NO. N.FL-R-SMT-1(01)	
		DESIGNED : TS. SAWAI	08.07.01	CODE NO. CL331-0332-3-01	
		DRAWN : TS. SAWAI	08.07.01	DATE	