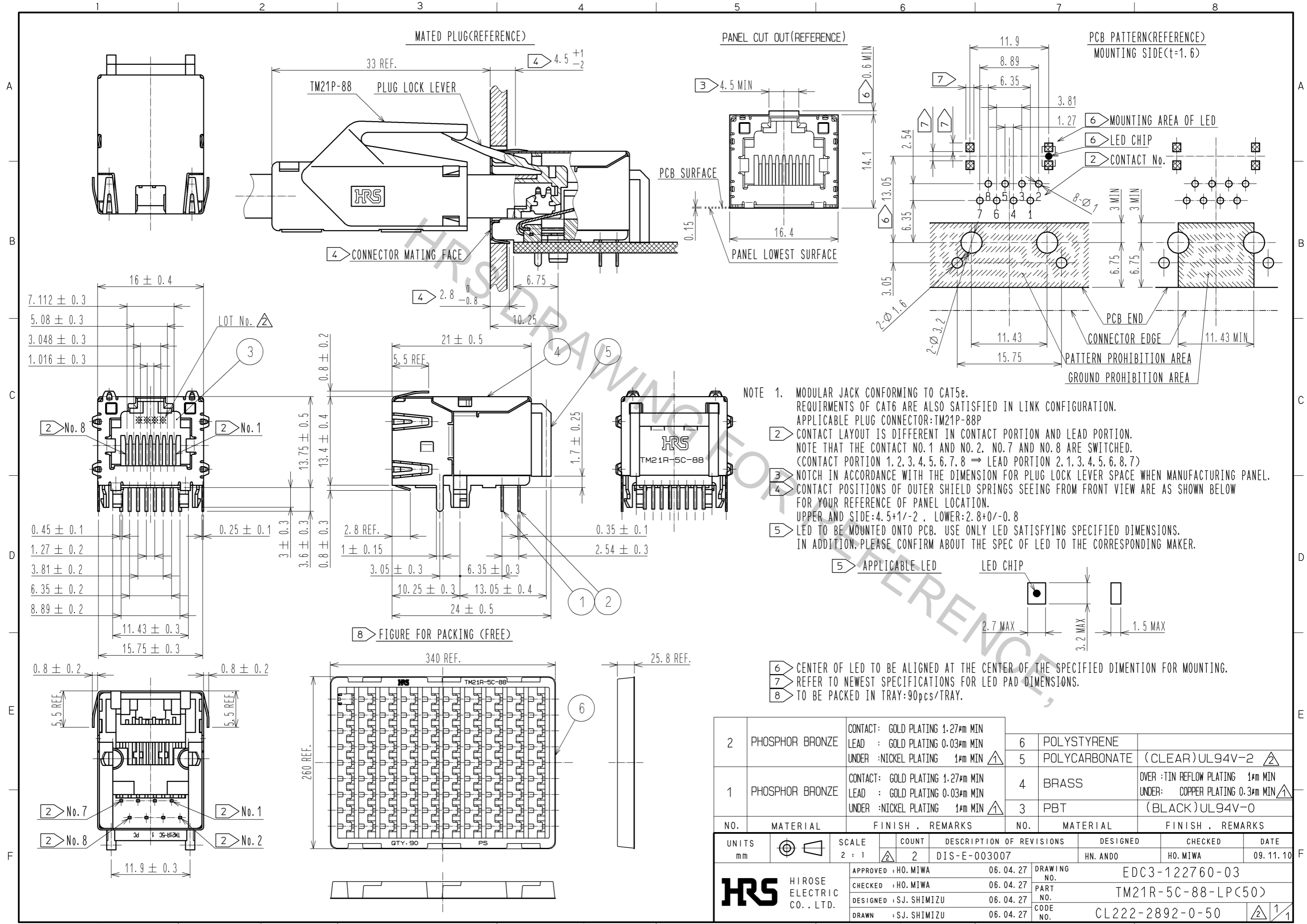


Aug.1.2016 Copyright 2016 HIROSE ELECTRIC CO., LTD. All Rights Reserved.



NOTE 1. MODULAR JACK CONFORMING TO CAT5e. REQUIREMENTS OF CAT6 ARE ALSO SATISFIED IN LINK CONFIGURATION. APPLICABLE PLUG CONNECTOR: TM21P-88P

2 CONTACT LAYOUT IS DIFFERENT IN CONTACT PORTION AND LEAD PORTION. NOTE THAT THE CONTACT NO.1 AND NO.2, NO.7 AND NO.8 ARE SWITCHED. (CONTACT PORTION 1, 2, 3, 4, 5, 6, 7, 8 → LEAD PORTION 2, 1, 3, 4, 5, 6, 8, 7)

3 NOTCH IN ACCORDANCE WITH THE DIMENSION FOR PLUG LOCK LEVER SPACE WHEN MANUFACTURING PANEL.

4 CONTACT POSITIONS OF OUTER SHIELD SPRINGS SEEING FROM FRONT VIEW ARE AS SHOWN BELOW FOR YOUR REFERENCE OF PANEL LOCATION. UPPER AND SIDE: 4.5+1/-2, LOWER: 2.8+0/-0.8

5 LED TO BE MOUNTED ONTO PCB. USE ONLY LED SATISFYING SPECIFIED DIMENSIONS. IN ADDITION, PLEASE CONFIRM ABOUT THE SPEC OF LED TO THE CORRESPONDING MAKER.



6 CENTER OF LED TO BE ALIGNED AT THE CENTER OF THE SPECIFIED DIMENTION FOR MOUNTING.

7 REFER TO NEWEST SPECIFICATIONS FOR LED PAD DIMENSIONS.

8 TO BE PACKED IN TRAY: 90pcs/TRAY.

NO.	MATERIAL	FINISH	REMARKS	NO.	MATERIAL	FINISH	REMARKS
2	PHOSPHOR BRONZE	CONTACT: GOLD PLATING 1.27μm MIN LEAD: GOLD PLATING 0.03μm MIN UNDER: NICKEL PLATING 1μm MIN		6	POLYSTYRENE		
1	PHOSPHOR BRONZE	CONTACT: GOLD PLATING 1.27μm MIN LEAD: GOLD PLATING 0.03μm MIN UNDER: NICKEL PLATING 1μm MIN		5	POLYCARBONATE	(CLEAR) UL94V-2	
				4	BRASS	OVER: TIN REFLOW PLATING 1μm MIN UNDER: COPPER PLATING 0.3μm MIN	
				3	PBT	(BLACK) UL94V-0	

UNITS	SCALE	COUNT	DESCRIPTION OF REVISIONS	DESIGNED	CHECKED	DATE
mm	2:1	2	DIS-E-003007	HN. ANDO	HO. MIWA	09.11.10

APPROVED	HO. MIWA	06.04.27	DRAWING NO.	EDC3-122760-03
CHECKED	HO. MIWA	06.04.27	PART NO.	TM21R-5C-88-LP(50)
DESIGNED	SJ. SHIMIZU	06.04.27	CODE NO.	CL222-2892-0-50
DRAWN	SJ. SHIMIZU	06.04.27		