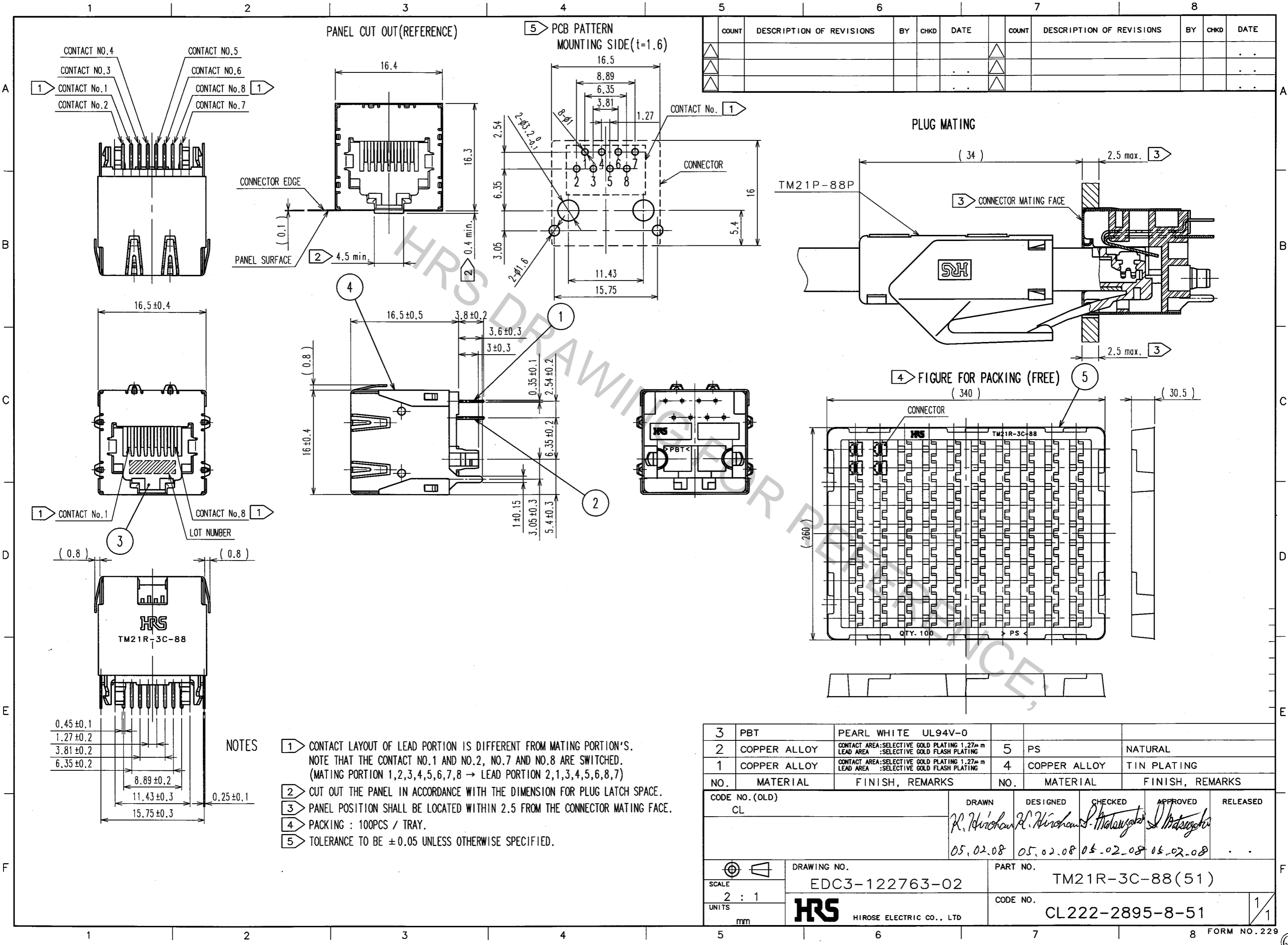


Aug.1.2016 Copyright 2016 HIROSE ELECTRIC CO., LTD. All Rights Reserved.



COUNT	DESCRIPTION OF REVISIONS	BY	CHKD	DATE	COUNT	DESCRIPTION OF REVISIONS	BY	CHKD	DATE

NOTES

- 1 CONTACT LAYOUT OF LEAD PORTION IS DIFFERENT FROM MATING PORTION'S. NOTE THAT THE CONTACT NO.1 AND NO.2, NO.7 AND NO.8 ARE SWITCHED. (MATING PORTION 1,2,3,4,5,6,7,8 → LEAD PORTION 2,1,3,4,5,6,8,7)
- 2 CUT OUT THE PANEL IN ACCORDANCE WITH THE DIMENSION FOR PLUG LATCH SPACE.
- 3 PANEL POSITION SHALL BE LOCATED WITHIN 2.5 FROM THE CONNECTOR MATING FACE.
- 4 PACKING : 100PCS / TRAY.
- 5 TOLERANCE TO BE ±0.05 UNLESS OTHERWISE SPECIFIED.

3	PBT	PEARL WHITE UL94V-0	5	PS	NATURAL
2	COPPER ALLOY	CONTACT AREA:SELECTIVE GOLD PLATING 1.27µm LEAD AREA :SELECTIVE GOLD FLASH PLATING	4	COPPER ALLOY	TIN PLATING
1	COPPER ALLOY	CONTACT AREA:SELECTIVE GOLD PLATING 1.27µm LEAD AREA :SELECTIVE GOLD FLASH PLATING			
NO.	MATERIAL	FINISH, REMARKS	NO.	MATERIAL	FINISH, REMARKS

CODE NO. (OLD) CL	DRAWN R. Hirouchi 05.02.08	DESIGNED R. Hirouchi 05.02.08	CHECKED S. Matsuyoshi 05.02.08	APPROVED S. Matsuyoshi 05.02.08	RELEASED
----------------------	----------------------------------	-------------------------------------	--------------------------------------	---------------------------------------	--------------

SCALE 2 : 1	DRAWING NO. EDC3-122763-02	PART NO. TM21R-3C-88(51)
UNITS mm	HRS HIROSE ELECTRIC CO., LTD	CODE NO. CL222-2895-8-51

TO
Q