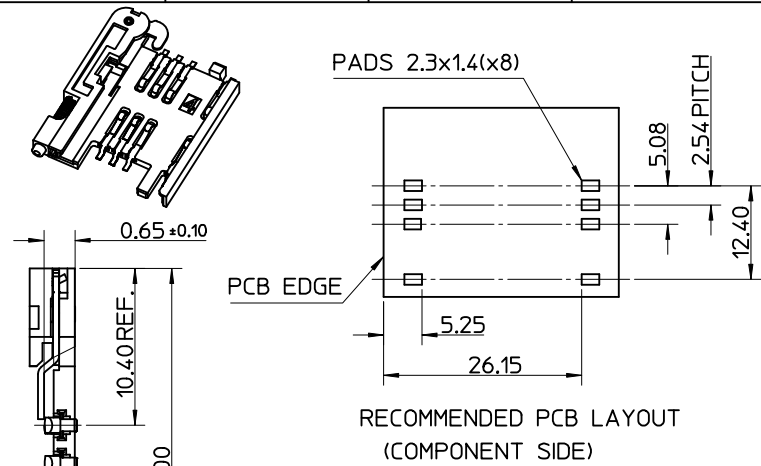
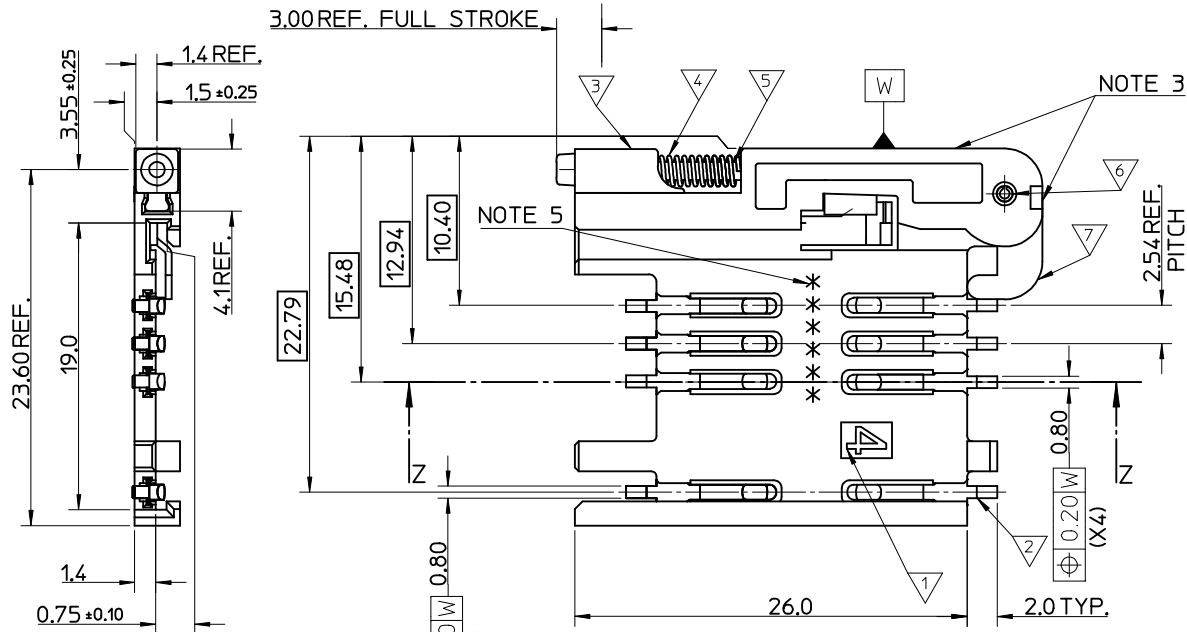
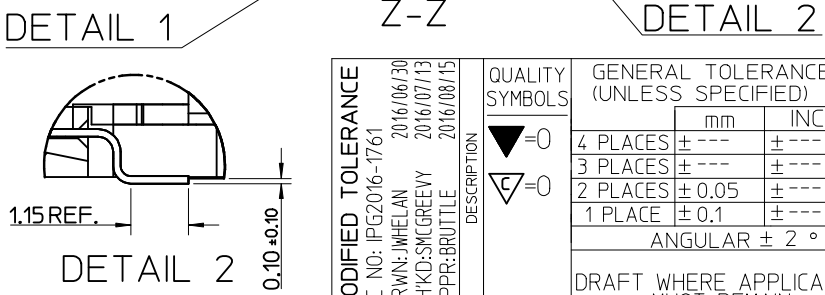
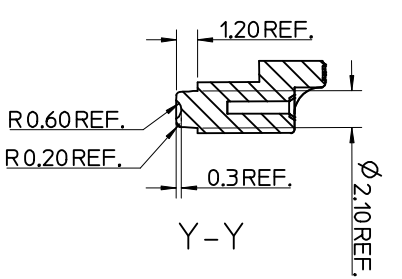
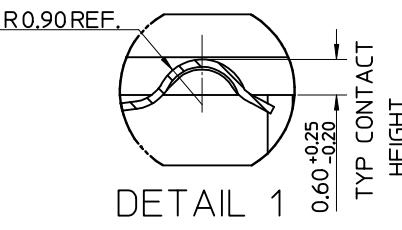


| MATERIAL NUMBER | DESCRIPTION |
|-----------------|----------------------------|
| 912283001 | REELED ONTO CARDBOARD REEL |
| 912283019 | REELED ONTO PLASTIC REEL |



- NOTES:
1. SEE PRODUCT SPECIFICATION PS-99020-0071.
 2. PACKAGING: TAPE & REEL, FOR DETAIL SEE SDA-91228-9001, SHEET 1
 3. PUSH ROD/LEVER MUST NOT PROTRUDE BEYOND HOUSING EDGE IN THIS AREA.
 4. TAILS ON EACH SIDE OF CONNECTOR TO LIE WITHIN 0.12 mm OF EACH OTHER
 5. DATECODE: (YEAR, WEEK, WEEK, DAY, HOUR, HOUR)

| ITEM | COMPONENT | QTY | MATERIAL |
|------|-------------|-----|---|
| ▽ | HOUSING | 1 | LIQUID CRYSTAL POLYMER (LCP) 30% GLASS FILL, JL94 V-O, COLOUR: BLACK |
| ▽ | TERMINAL | 8 | 0.15 PHOSPHOR BRONZE, 0.14µm MIN Au OVER Pd/Ni IN CONTACT AREA 2.54µm MIN Sn ON SMT TAILS |
| ▽ | PUSH BUTTON | 1 | GF POLYAMIDE 6T/66, YELLOW |
| ▽ | COIL SPRING | 1 | 0.25 REF THK STAINLESS STEEL |
| ▽ | PUSH ROD | 1 | 0.4 REF THK STAINLESS STEEL |
| ▽ | C-PIN | 1 | STEEL |
| ▽ | LEVER | 1 | 0.4 REF THK STAINLESS STEEL |

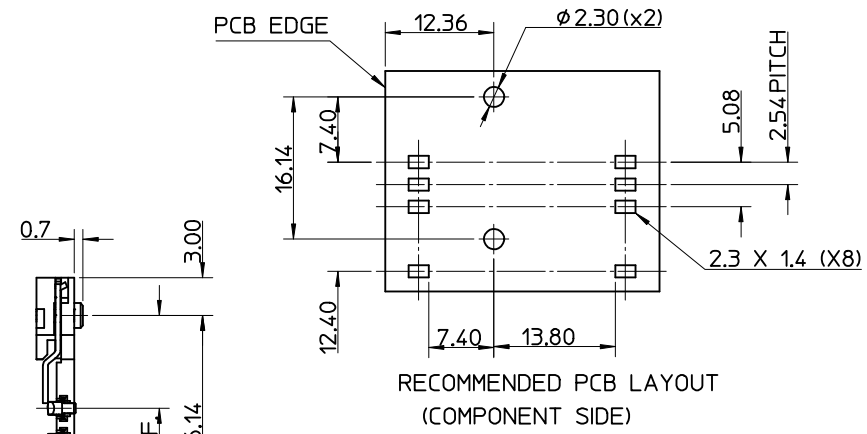
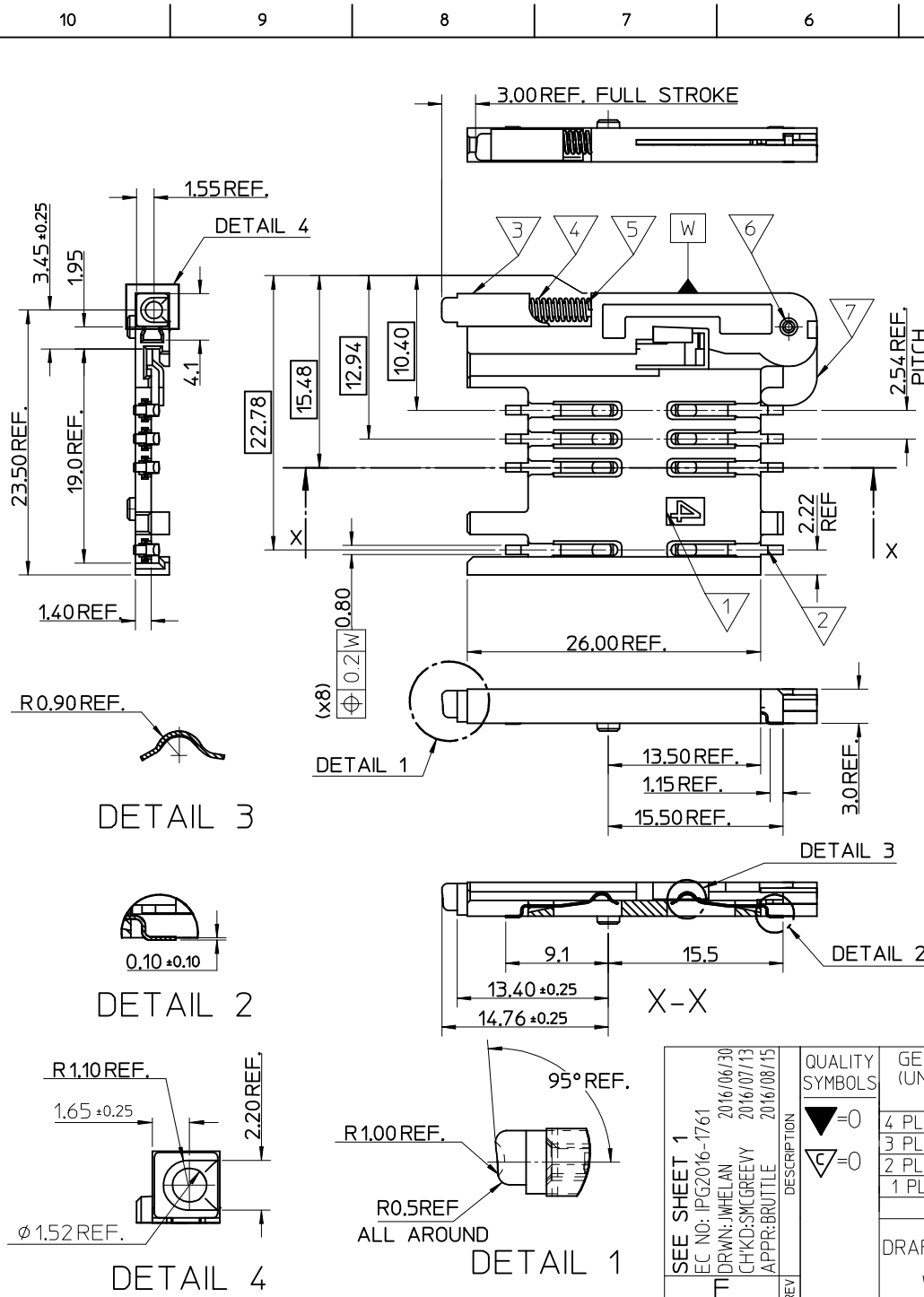


| REV | DESCRIPTION |
|-----|---------------------------|
| 1 | MODIFIED TOLERANCE |
| 2 | EC NO: IPG2016-1761 |
| 3 | DRWN: JMWELAN 2016/06/30 |
| 4 | CHKD: SMCREEVY 2016/07/13 |
| 5 | APPR: BRUTTLE 2016/08/15 |

| QUALITY SYMBOLS | GENERAL TOLERANCES (UNLESS SPECIFIED) |
|-----------------|---------------------------------------|
| ▽ = 0 | mm INCH |
| ▽ = 0 | 4 PLACES ± --- ± --- |
| | 3 PLACES ± --- ± --- |
| | 2 PLACES ± 0.05 ± --- |
| | 1 PLACE ± 0.1 ± --- |
| | ANGULAR ± 2 ° |

| DIMENSION STYLE | | SCALE | DESIGN UNITS | THIRD ANGLE PROJECTION |
|-----------------|------------|--------------------|--------------|------------------------|
| MM ONLY | | 5:1 | METRIC | THIRD ANGLE PROJECTION |
| DRAWN BY | DATE | TITLE | | |
| RFORREY | 2006/11/27 | SIM CONNECTOR ASSY | | |
| CHECKED BY | DATE | MATERIAL NO. | | |
| FDUGGAN | 2006/11/27 | SEE TABLE | | |
| APPROVED BY | DATE | DOCUMENT NO. | | |
| EFOLAN | 2006/11/27 | SD-91228-001 | | |

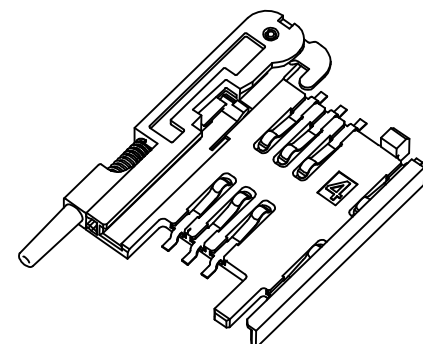
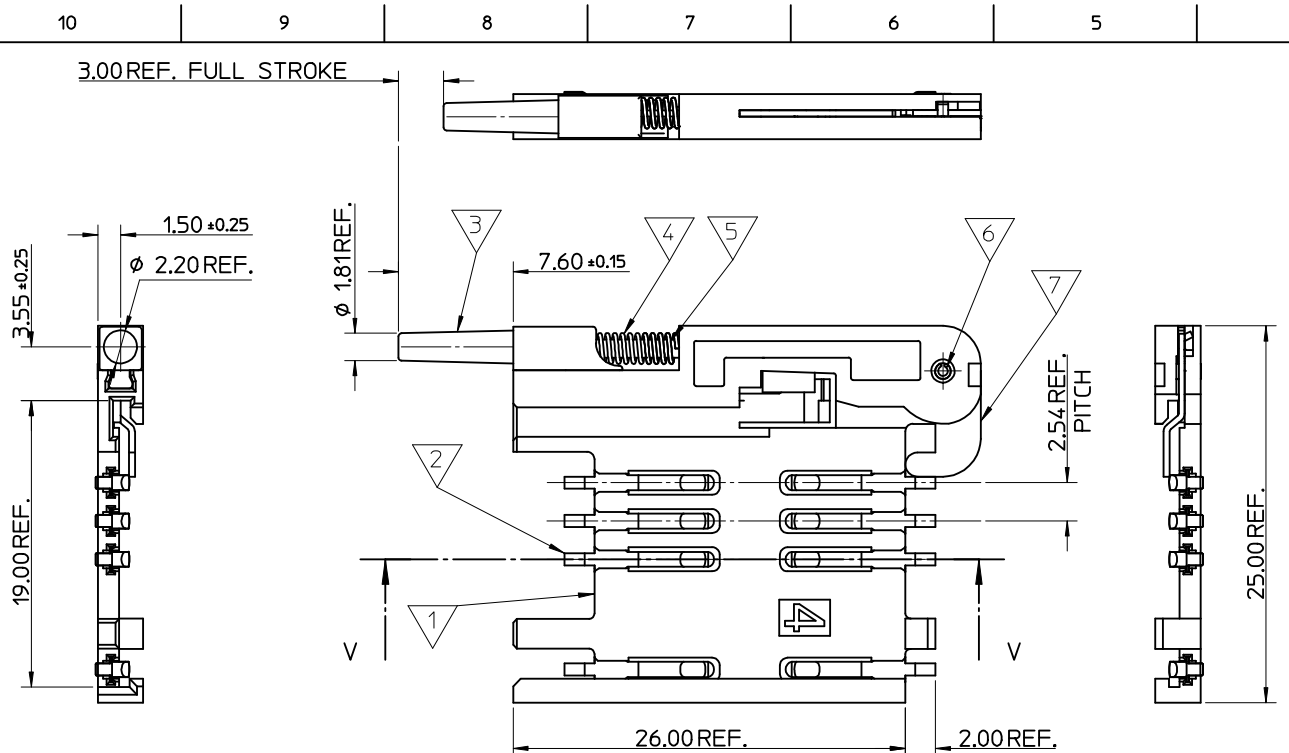
| | | | | | |
|---|--|--------------|--|-----------|--|
| MATERIAL NO. | | DOCUMENT NO. | | SHEET NO. | |
| SEE TABLE | | SD-91228-001 | | 1 OF 6 | |
| THIS DRAWING CONTAINS INFORMATION THAT IS PROPRIETARY TO MOLEX INCORPORATED AND SHOULD NOT BE USED WITHOUT WRITTEN PERMISSION | | | | | |



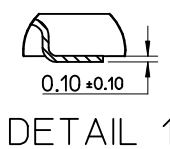
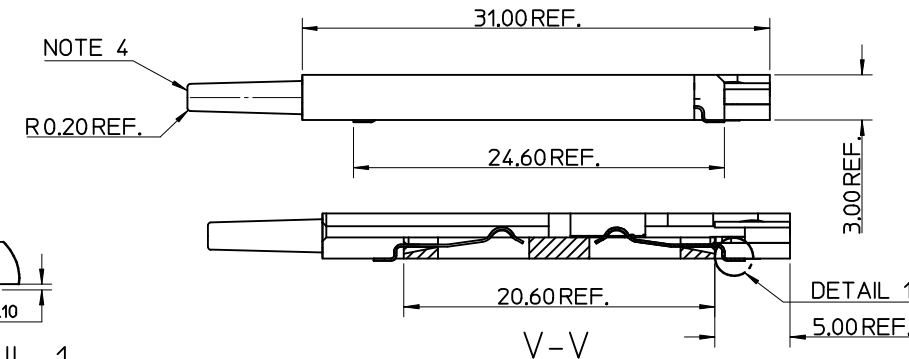
- NOTES:
1. SEE PRODUCT SPECIFICATION PS-99020-0071.
 2. PACKAGING: TAPE & REEL, FOR DETAIL SEE SDA-91228-9001, SHEET 1
 3. FOR ALL UNSPECIFIED DIMENSIONS AND NOTES SEE SHEET 1.

| ITEM | COMPONENT | QTY | MATERIAL |
|------|-------------|-----|---|
| ▽ | HOUSING | | LIQUID CRYSTAL POLYMER (LCP) 30% GLASS FILL, UL94 V-0, COLOUR: BLACK |
| ▽ | TERMINAL | | 0.15 PHOSPHOR BRONZE. 0.14μm MIN Au OVER Pd/Ni IN CONTACT AREA 2.54μm MIN Sn ON SMT TAILS |
| ▽ | PUSH BUTTON | | GF POLYAMIDE 6T/66. BLACK. |
| ▽ | COIL SPRING | | 0.25 REF THK STAINLESS STEEL |
| ▽ | PUSH ROD | | 0.4 REF THK STAINLESS STEEL |
| ▽ | C-PIN | | STEEL |
| ▽ | LEVER | | 0.4 REF THK STAINLESS STEEL |

| | | | | | |
|--|---|--|---|--|------------------------------------|
| SEE SHEET 1 EC NO: IPG2016-1761 DRWN: JMH/ELAN 2016/06/30 CHKD: SM/GREEVY 2016/07/13 APPR: BRUTTLE 2016/08/15 REV | QUALITY SYMBOLS ▽ = 0 ▽ = 0 | GENERAL TOLERANCES (UNLESS SPECIFIED) mm INCH 4 PLACES ± --- ± --- 3 PLACES ± --- ± --- 2 PLACES ± 0.05 ± --- 1 PLACE ± 0.1 ± --- ANGULAR ± 2 ° | DIMENSION STYLE MM ONLY DRAWN BY: RFORREY DATE: 2006/11/27 CHECKED BY: DATE: APPROVED BY: FDUGGAN DATE: 2006/11/27 MATERIAL NO. EFOLAN 2006/11/27 | SCALE 5:1 DESIGN UNITS METRIC THIRD ANGLE PROJECTION | TITLE SIM CONNECTOR ASSY |
| | DRAFT WHERE APPLICABLE MUST REMAIN WITHIN DIMENSIONS | | MATERIAL NO. 912283002 | DOCUMENT NO. SD-91228-001 | SHEET NO. 2 OF 6 |
| | THIS DRAWING CONTAINS INFORMATION THAT IS PROPRIETARY TO MOLEX INCORPORATED AND SHOULD NOT BE USED WITHOUT WRITTEN PERMISSION | | | | |
| | MOLEX INCORPORATED | | | | |



- NOTES:
1. SEE PRODUCT SPECIFICATION PS-91228-004.
 2. PACKAGING: TAPE & REEL, FOR DETAIL SEE SDA-91228-9001, SHEET 2.
 3. SEE SHEET 1 FOR ALL UNSPECIFIED NOTES AND DIMENSIONS.
 4. ALLOWABLE FLASH IN THIS AREA 0.3mm MAX.



| ITEM | COMPONENT | QTY | MATERIAL |
|------|-------------|-----|---|
| 1 | HOUSING | 1 | LIQUID CRYSTAL POLYMER (LCP) 30% GLASS FILL, UL94 V-0, COLOUR: BLACK |
| 2 | TERMINAL | 8 | 0.15 PHOSPHOR BRONZE. 0.14mm MIN Au OVER Pd/Ni IN CONTACT AREA 2.54mm MIN Sn ON SMT TAILS |
| 3 | PUSH BUTTON | 1 | GF POLYAMIDE 6T/66, NATURAL |
| 4 | COIL SPRING | 1 | 0.25 REF THK STAINLESS STEEL |
| 5 | PUSH ROD | 1 | 0.4 REF THK STAINLESS STEEL |
| 6 | C-PIN | 1 | STEEL |
| 7 | LEVER | 1 | 0.4 REF THK STAINLESS STEEL |

| | | | | | | | |
|--|---|--------------------------------|---|---|-----------------------------|---------------------|------------------------|
| SEE SHEET 1 EC NO: IPG2016-1761 TDRWN: JIMELAN CHKD: SYLGREEVY APPR: BRUTTLE | DESCRIPTION 2016/06/30 2016/07/13 2016/08/15 | QUALITY SYMBOLS | GENERAL TOLERANCES (UNLESS SPECIFIED) | DIMENSION STYLE | SCALE | DESIGN UNITS | THIRD ANGLE PROJECTION |
| | | $\nabla = 0$ $\nabla C = 0$ | mm INCH 4 PLACES ± --- ± --- 3 PLACES ± --- ± --- 2 PLACES ± 0.05 ± --- 1 PLACE ± 0.1 ± --- ANGULAR ± 2° | MM ONLY | 5:1 | METRIC | |
| | | | DRAFT WHERE APPLICABLE MUST REMAIN WITHIN DIMENSIONS | DRAWN BY DATE RFORREY 2006/11/27 CHECKED BY DATE FDUGGAN 2006/11/27 APPROVED BY DATE EFOLAN 2006/11/27 | TITLE SIM CONNECTOR ASSY | | |
| | | | MATERIAL NO. 912283005 | MOLEX INCORPORATED DOCUMENT NO. SD-91228-001 | | SHEET NO. 3 OF 6 | |

10 9 8 7 6 5 4 3 2 1

3.00REF. FULL STROKE

15.05REF.

1.23 ± 0.25
 ∅ 2.1REF.

2.55 ± 0.25

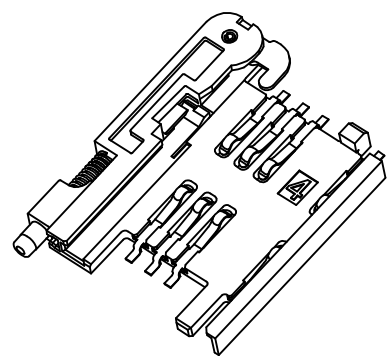
1.50 ± 0.25

3.00REF.

∅ 2.0REF (x2)
 16.14REF.

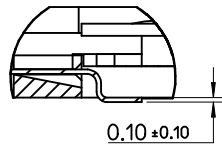
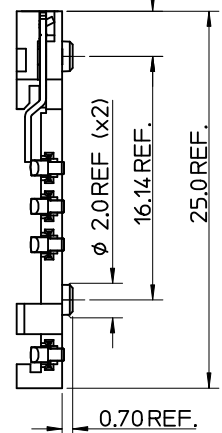
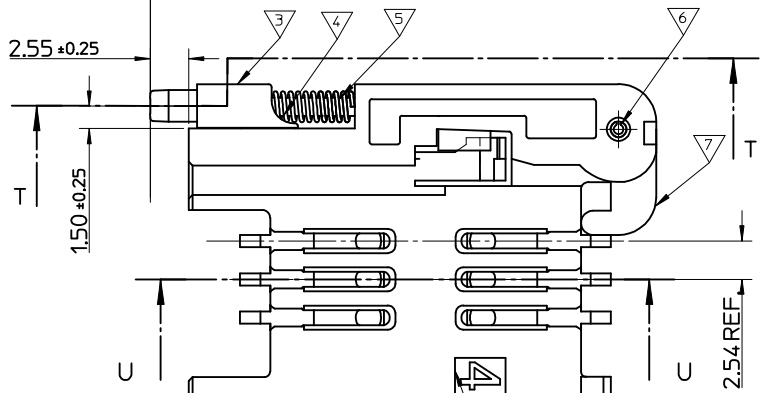
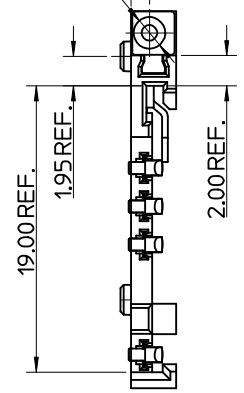
25.0REF.

0.70REF.

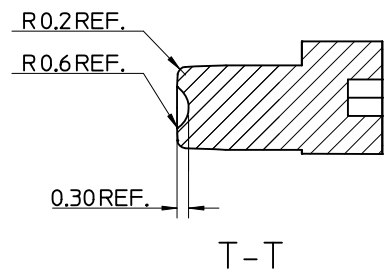
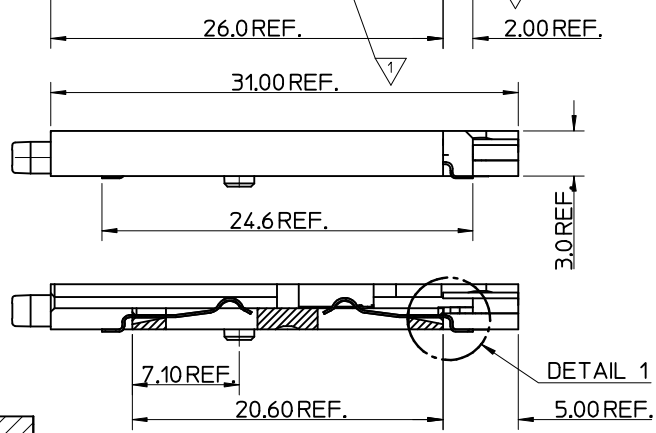


NOTES:

1. SEE PRODUCT SPECIFICATION PS-99020-0071.
2. PACKAGING: TAPE & REEL, FOR DETAIL SEE SDA-91228-9001, SHEET 2.
3. SEE SHEETS 1 & 2 FOR ALL UNSPECIFIED NOTES AND DIMENSIONS.



DETAIL 1



T-T

| ITEM | COMPONENT | QTY | MATERIAL |
|------|-------------|-----|---|
| ▽ | HOUSING | 1 | LIQUID CRYSTAL POLYMER (LCP) 30% GLASS FILL, UL94 V-0, COLOUR: BLACK |
| ▽ | TERMINAL | 8 | 0.15 PHOSPHOR BRONZE, 0.14mm MIN Au OVER Pd/Ni IN CONTACT AREA 2.54mm MIN Sn ON SMT TAILS |
| ▽ | PUSH BUTTON | 1 | GF POLYAMIDE 6T/66, BLACK. |
| ▽ | COIL SPRING | 1 | 0.25 REF THK STAINLESS STEEL |
| ▽ | PUSH ROD | 1 | 0.4 REF THK STAINLESS STEEL |
| ▽ | C-PIN | 1 | STEEL |
| ▽ | LEVER | 1 | 0.4 REF THK STAINLESS STEEL |

SEE SHEET 1
 EC NO: IPG2016-1761
 DRWN: JMELAN 2016/06/30
 CHKD: SMGREVY 2016/07/13
 APPR: BRUTILE 2016/08/15

QUALITY SYMBOLS
 ▽ = 0
 ▽ = 0

GENERAL TOLERANCES (UNLESS SPECIFIED)

| | mm | INCH |
|----------|--------|-------|
| 4 PLACES | ± --- | ± --- |
| 3 PLACES | ± --- | ± --- |
| 2 PLACES | ± 0.05 | ± --- |
| 1 PLACE | ± 0.1 | ± --- |

ANGULAR ± 2 °

DRAFT WHERE APPLICABLE
 MUST REMAIN
 WITHIN DIMENSIONS

DIMENSION STYLE
 MM ONLY

SCALE
 5:1

DESIGN UNITS
 METRIC

THIRD ANGLE PROJECTION

DRAWN BY: RFORREY
 DATE: 2006/11/27

CHECKED BY: FDUGGAN
 DATE: 2006/11/27

APPROVED BY: EFOLAN
 DATE: 2006/11/27

TITLE
 SIM CONNECTOR ASSY

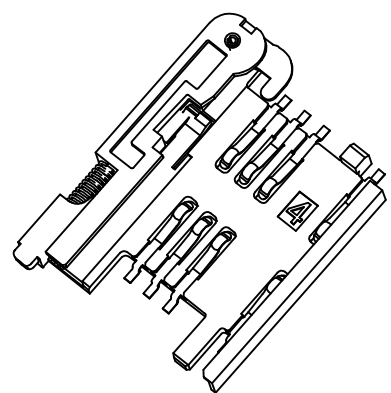
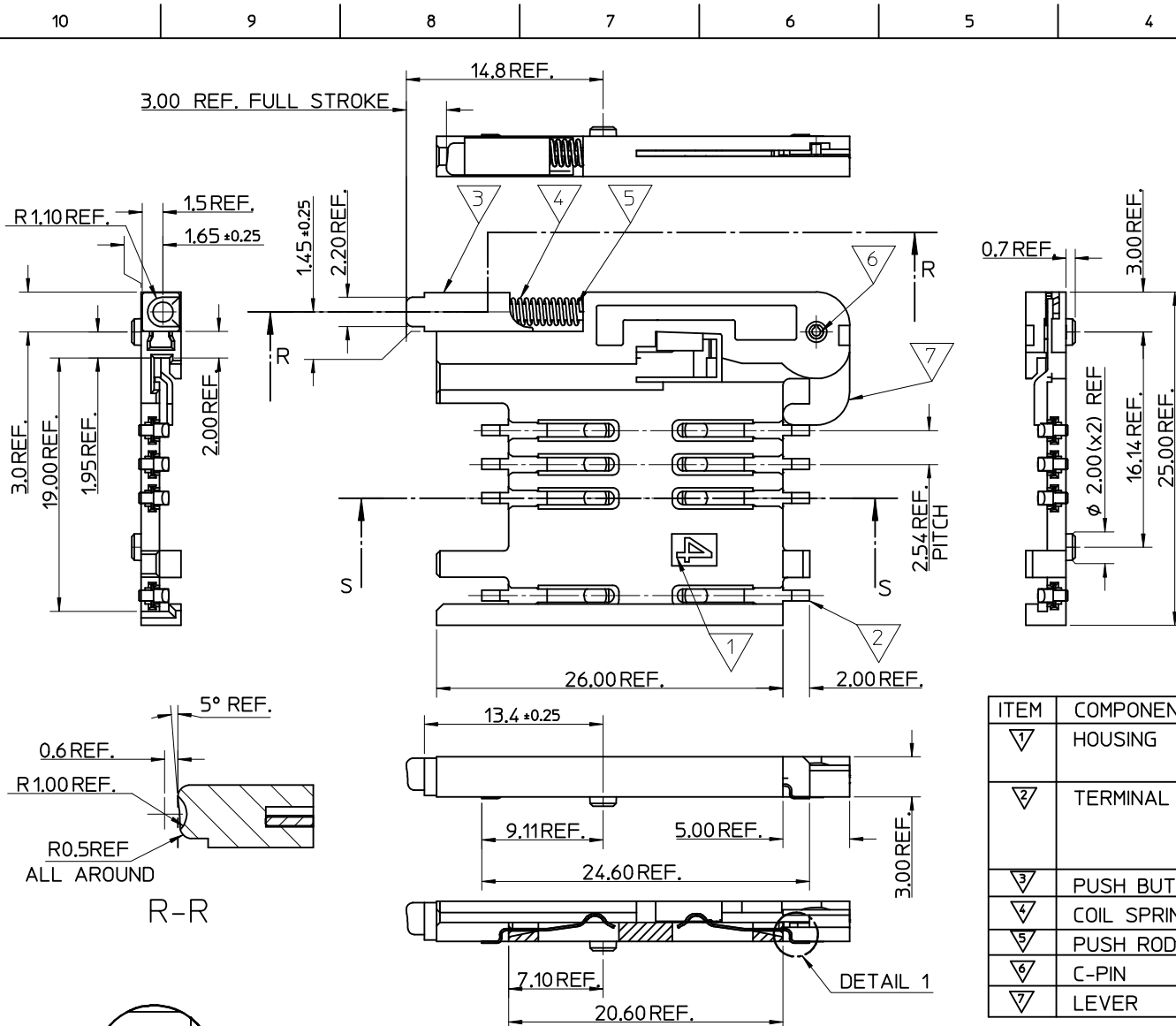
MATERIAL NO.
 912283006

DOCUMENT NO.
 SD-91228-001

SHEET NO.
 4 OF 6

THIS DRAWING CONTAINS INFORMATION THAT IS PROPRIETARY TO MOLEX INCORPORATED AND SHOULD NOT BE USED WITHOUT WRITTEN PERMISSION

9 8 7 6 5 4 3 2 1



- NOTES:
1. SEE PRODUCT SPECIFICATION PS-99020-0071.
 2. PACKAGING: TAPE & REEL, FOR DETAIL SEE SDA-91228-9001, SHEET 1.
 3. SEE SHEET 1 FOR ALL UNSPECIFIED NOTES AND DIMENSIONS.

| ITEM | COMPONENT | QTY | MATERIAL |
|------|-------------|-----|---|
| ▽ | HOUSING | 1 | LIQUID CRYSTAL POLYMER (LCP) 30% GLASS FILL, UL94 V-0, COLOUR: BLACK |
| ▽ | TERMINAL | 8 | 0.15 PHOSPHOR BRONZE. 0.14μm MIN Au OVER Pd/Ni IN CONTACT AREA 2.54μm MIN Sn ON SMT TAILS |
| ▽ | PUSH BUTTON | 1 | GF POLYAMIDE 6T/66, BLUE |
| ▽ | COIL SPRING | 1 | 0.25 REF THK STAINLESS STEEL |
| ▽ | PUSH ROD | 1 | 0.4 REF THK STAINLESS STEEL |
| ▽ | C-PIN | 1 | STEEL |
| ▽ | LEVER | 1 | 0.4 REF THK STAINLESS STEEL |

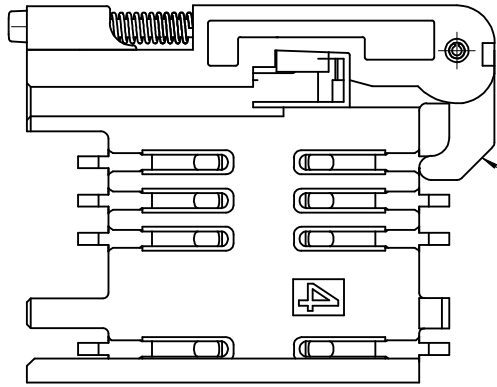
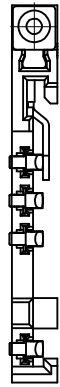
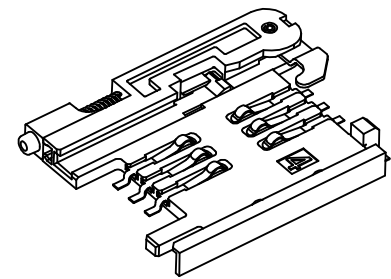
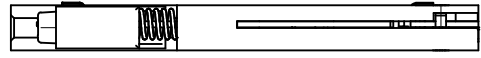
| | |
|--------------------|-------------|
| SEE SHEET 1 | DESCRIPTION |
| EC NO: P92016-1761 | 2016/06/30 |
| DRWN: JWEELAN | 2016/07/13 |
| CHKD: SMCREEVY | 2016/08/15 |
| APPR: BRUTTLE | |
| REV | |

| | |
|-----------------|-------|
| QUALITY SYMBOLS | ▽ = 0 |
| | ▽ = 0 |

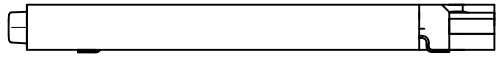
| | | |
|--|-----------------|-------|
| GENERAL TOLERANCES (UNLESS SPECIFIED) | mm | INCH |
| | 4 PLACES ± --- | ± --- |
| | 3 PLACES ± --- | ± --- |
| | 2 PLACES ± 0.05 | ± --- |
| | 1 PLACE ± 0.1 | ± --- |
| | ANGULAR ± 2 ° | |
| DRAFT WHERE APPLICABLE MUST REMAIN WITHIN DIMENSIONS | | |

| | | | | |
|-----------------|------------|--------------------|--------------|------------------------|
| DIMENSION STYLE | | SCALE | DESIGN UNITS | THIRD ANGLE PROJECTION |
| MM ONLY | | 5:1 | METRIC | |
| DRAWN BY | DATE | TITLE | | |
| RFORREY | 2006/11/27 | SIM CONNECTOR ASSY | | |
| CHECKED BY | DATE | | | |
| FDUGGAN | 2006/11/27 | | | |
| APPROVED BY | DATE | | | |
| EFOLAN | 2006/11/27 | | | |
| MATERIAL NO. | | | | |
| 912283007 | | | | |

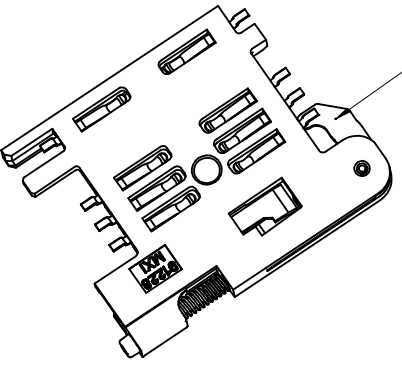
| | | |
|--------------------|--|-----------|
| MOLEX INCORPORATED | | SHEET NO. |
| DOCUMENT NO. | | 5 OF 6 |
| SD-91228-001 | | |



NOTE 4



NOTE 6
BLACK COLOUR
THIS FACE

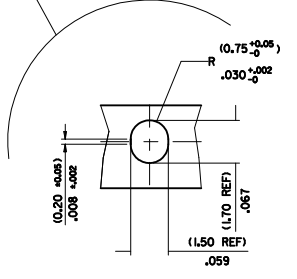
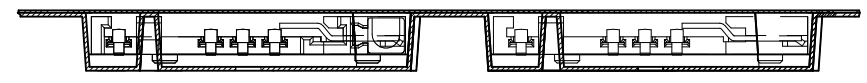
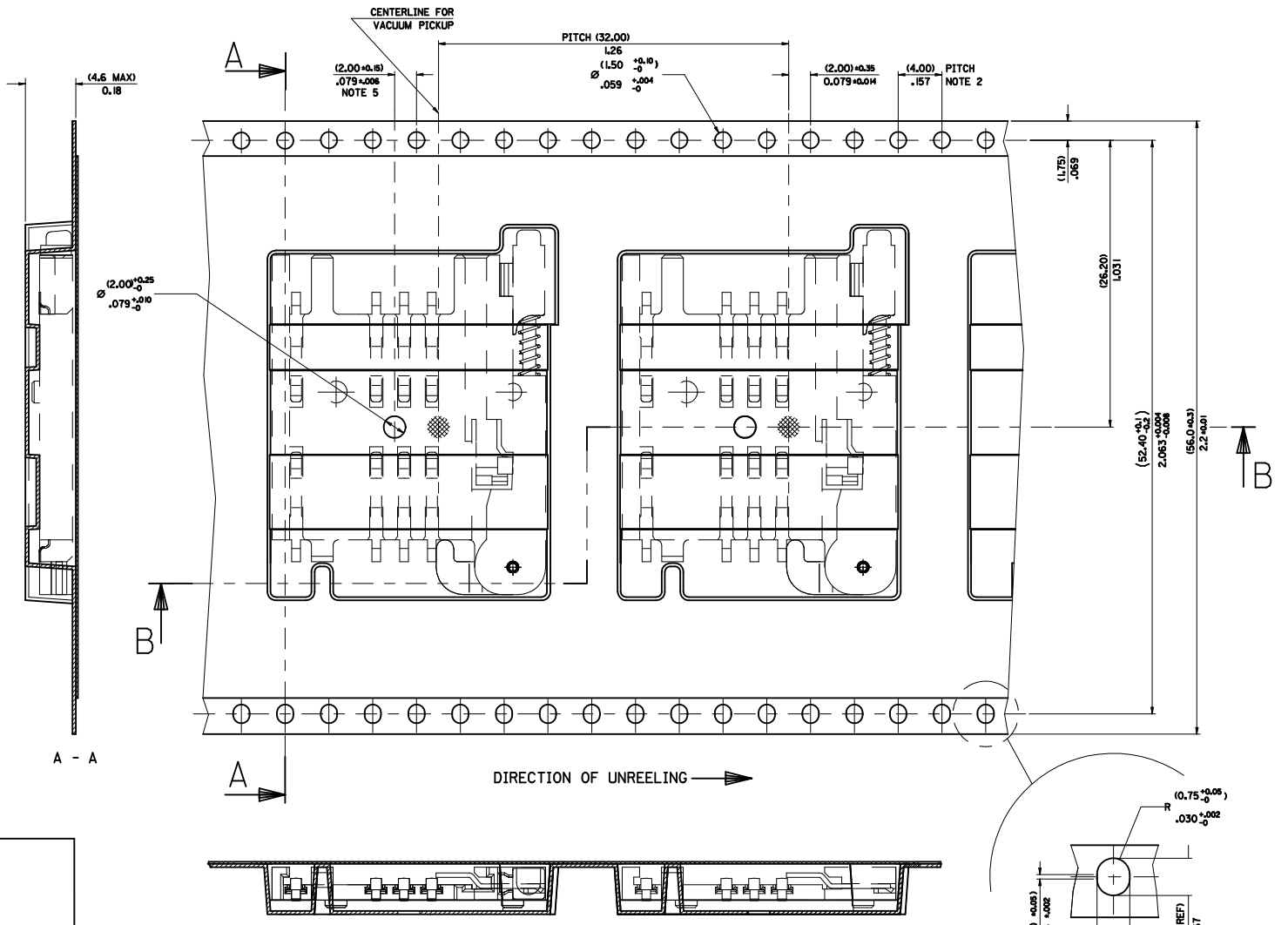
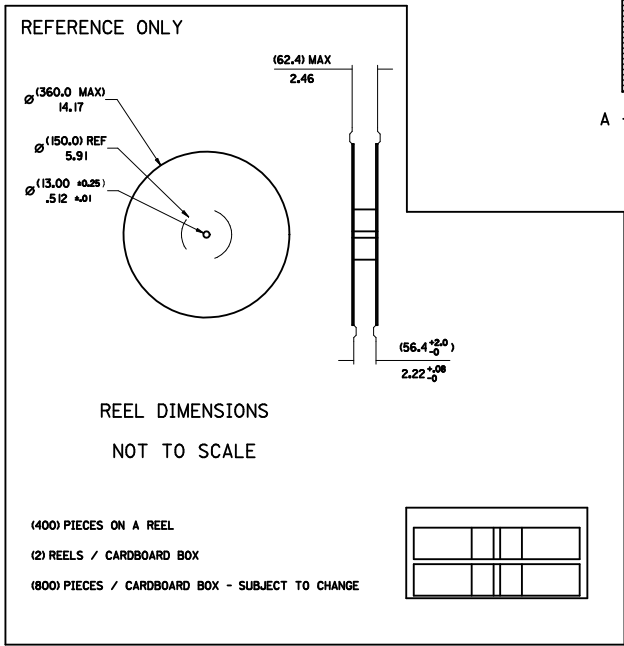
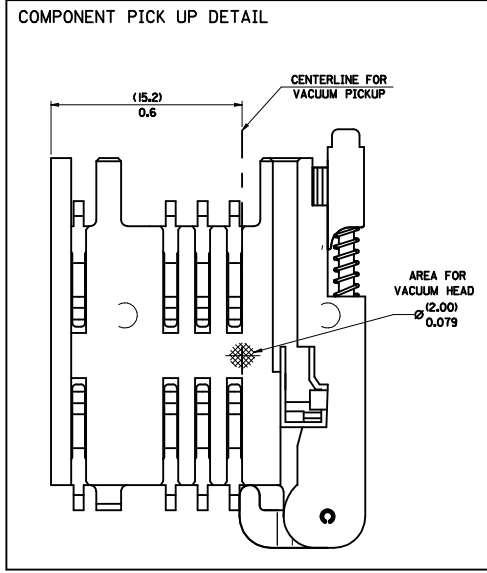


NOTES:

1. SEE PRODUCT SPECIFICATION PS-91228-016
2. PACKAGING: TAPE & REEL, FOR DETAIL SEE SDA-91228-9001, SHEET 1
3. FOR ALL UNSPECIFIED DIMENSIONS AND NOTES SEE SHEET 1.
4. 5mm EJECTOR LEVER
5. CARD HOLDER EJECTION DISTANCE: 5.0±0.3mm
6. LEVER FACE TO BE COLOURED BLACK WITH ALCOHOL BASED INK.

| | | | | | | | | | |
|---|--|--------------------|--|---|--|--------------------|---------------------------|------------------------|--|
| SEE SHEET 1 EC NO: IPG2016-1761 DRWN: JWEHLAN CHKD: SMCREEVEY APPR: BRUTTLE | 2016/06/30 2016/07/13 2016/08/15 | DESCRIPTION REV | QUALITY SYMBOLS | GENERAL TOLERANCES (UNLESS SPECIFIED) | DIMENSION STYLE | SCALE | DESIGN UNITS | THIRD ANGLE PROJECTION | |
| | | | $\nabla = 0$ $\triangle = 0$ | mm INCH | MM ONLY | 3:1 | METRIC | | |
| | | | 4 PLACES ± --- ± --- 3 PLACES ± --- ± --- 2 PLACES ± 0.05 ± --- 1 PLACE ± 0.1 ± --- | DRAWN BY: RFORREY CHECKED BY: FDUGGAN APPROVED BY: EFOLAN | DATE: 2006/11/27 DATE: 2006/11/27 DATE: 2006/11/27 | TITLE | SIM CONNECTOR ASSY | | |
| | | | ANGULAR ± 2 ° | MATERIAL NO. 912283016 | DATE: 2006/11/27 | MOLEX INCORPORATED | DOCUMENT NO. SD-91228-001 | SHEET NO. 6 OF 6 | |
| DRAFT WHERE APPLICABLE MUST REMAIN WITHIN DIMENSIONS | | | | THIS DRAWING CONTAINS INFORMATION THAT IS PROPRIETARY TO MOLEX INCORPORATED AND SHOULD NOT BE USED WITHOUT WRITTEN PERMISSION | | | | | |

| PART NO | DESCRIPTION | TYPE OF REEL |
|-------------------------|----------------------------|--------------|
| 91228-0001 & 91228-3001 | SIM CONNECTOR WITHOUT PEGS | CARDBOARD |
| 91228-0002 & 91228-3002 | SIM CONNECTOR WITH PEGS | CARDBOARD |
| 91228-0012 & 91228-3012 | SIM CONNECTOR WITH PEGS | CARDBOARD |
| 91228-0007 & 91228-3007 | SIM CONNECTOR WITH PEGS | CARDBOARD |
| 91228-3019 | SIM CONNECTOR WITHOUT PEGS | PLASTIC |



- NOTES:**
- 1) MATERIAL :
CARRIER TAPE : VOLUME CONDUCTIVE POLYSTYRENE, 0.40 REF THICK, BLACK
COVER TAPE : COLD SEAL POLYESTER, 0.08 REF THICK TRANSPARENT
 - 2) PITCH TOLERANCE OVER ANY 10 PITCHES + 0.2 MM
 - 3) REEL FORCE OF THE COVER TAPE IS 0.1 N TO 1.0 N
AT A MAXIMUM REEL SPEED OF 300 MM/MIN + 10%
 - 4) PACKAGING SPEC, PK-91228-002
 - 5) REFERENCE TO IEC 286-3 EXCEPT WHERE NOTED

| ADD REEL OPTION ELEC NO: E2012-0058 DRAWN BY: DRWN:SDSHEA CHKD:SMCGREY APPR:EFOLAN 2011/08/31 2011/09/01 2011/10/13 | QUALITY SYMBOLS $\nabla=0$ $\nabla=0$ | GENERAL TOLERANCES (UNLESS SPECIFIED) <table border="1"> <thead> <tr> <th></th> <th>mm</th> <th>INCH</th> </tr> </thead> <tbody> <tr> <td>4 PLACES</td> <td>± .15</td> <td>± .005</td> </tr> <tr> <td>3 PLACES</td> <td>± .10</td> <td>± .004</td> </tr> <tr> <td>2 PLACES</td> <td>± 0.10</td> <td>± .003</td> </tr> <tr> <td>1 PLACE</td> <td>± 0.20</td> <td>± .008</td> </tr> </tbody> </table> | | mm | INCH | 4 PLACES | ± .15 | ± .005 | 3 PLACES | ± .10 | ± .004 | 2 PLACES | ± 0.10 | ± .003 | 1 PLACE | ± 0.20 | ± .008 | DIMENSION STYLE MM/IN | SCALE 1:1 | DESIGN UNITS METRIC | <input checked="" type="checkbox"/> THIRD ANGLE PROJECTION |
|---|---|---|---------------------------------------|----------------------------|------|----------|-------|--------|----------|-------|--------|----------|--------|--------|---------|--------|--------|---------------------------------|---------------------|-------------------------------|--|
| | | | | mm | INCH | | | | | | | | | | | | | | | | |
| 4 PLACES | ± .15 | ± .005 | | | | | | | | | | | | | | | | | | | |
| 3 PLACES | ± .10 | ± .004 | | | | | | | | | | | | | | | | | | | |
| 2 PLACES | ± 0.10 | ± .003 | | | | | | | | | | | | | | | | | | | |
| 1 PLACE | ± 0.20 | ± .008 | | | | | | | | | | | | | | | | | | | |
| DRAWN BY: DMAHER CHECKED BY: FJUGGAN APPROVED BY: EFOLAN DATE: 2006/12/07 DATE: 2006/12/07 DATE: 2006/12/07 | TITLE BLISTER PACKAGING SIM CARD PCB HOUSING | MATERIAL NO. SEE CHART | DOCUMENT NO. SDA-91228-9001 | SHEET NO. 1 OF 4 | | | | | | | | | | | | | | | | | |

THIS DRAWING CONTAINS INFORMATION THAT IS PROPRIETARY TO MOLEX INCORPORATED AND SHOULD NOT BE USED WITHOUT WRITTEN PERMISSION