


MATERIAL OF THE PLASTIC BODY	POLYAMIDE PA6.6 HEAT STABILIZED
MATERIAL OF THE FASTON (6,3x0,8)	ZINC PLATED STEEL

Tolerances for linear dimensions

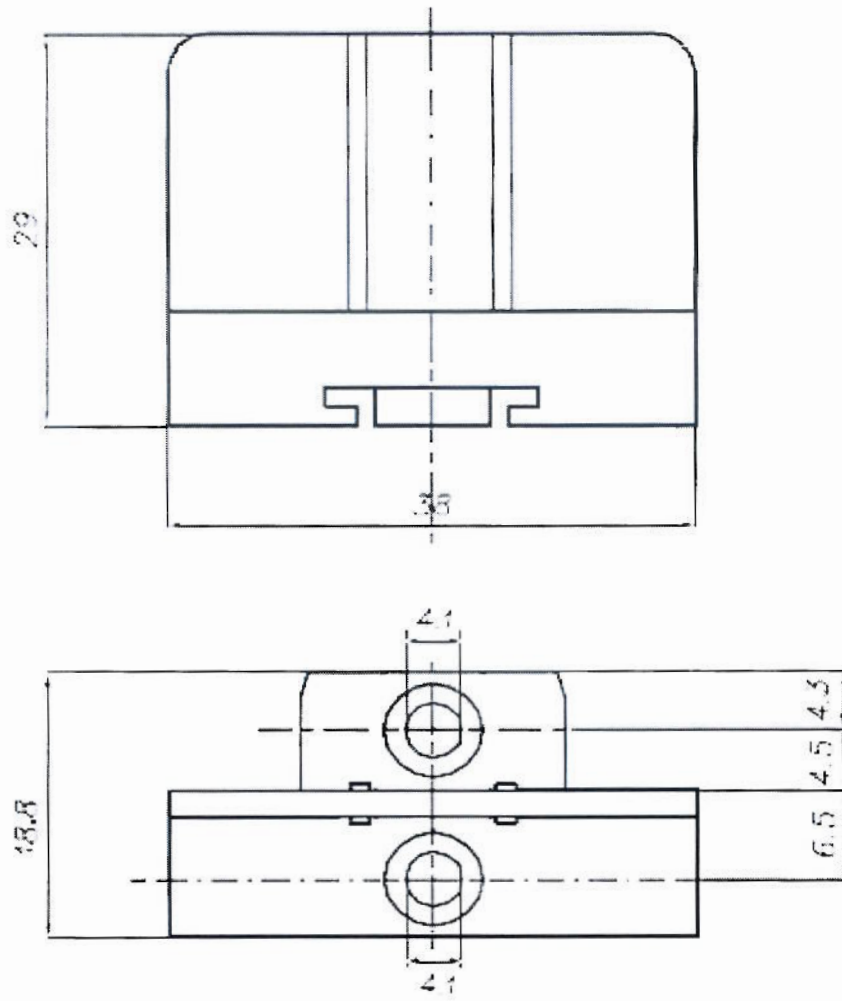
from - to mm	0.1	6	6.1	40	40.1	150	150	300	
	± 0.1		± 0.2		± 0.3		± 0.4		

DESCRIPTION HY 508 F/F

	<p>DATE</p> <p>30.03.2017</p>
---	-------------------------------

HY508/6 F/F: Is a kit product consisting of:
 HY508 F/F x 6
 HY508/1 x 1

HY508/3 F/F: Is a kit product consisting of:
 HY508 F/F x 3
 HY508/1 x 1



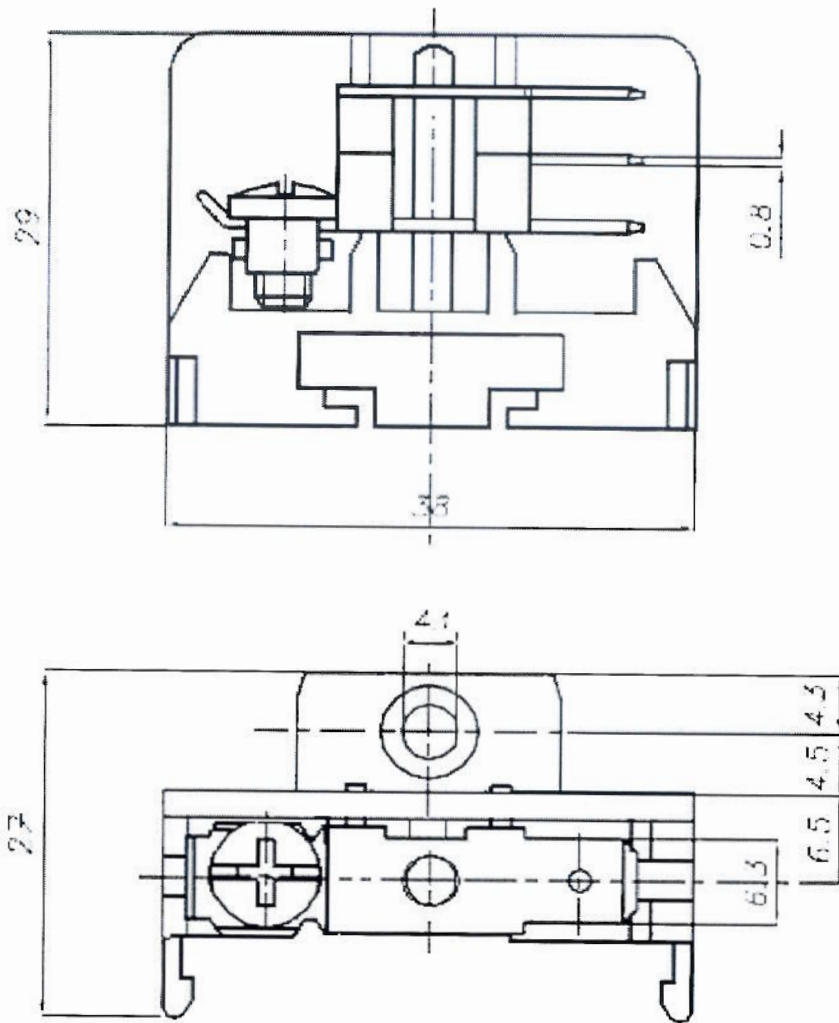
MATERIAL OF THE PLASTIC BODY	POLYAMIDE PA6.6 HEAT STABILIZED

Tolerances for linear dimensions

from - to mm	0.1	6	6.1	40	40.1	150	150	300	
	± 0.1		± 0.2		± 0.3		± 0.4		

DESCRIPTION HY 508/1 END WALL

 hylec	DATE 30.03.2017
--	--------------------



MATERIAL OF THE PLASTIC BODY	POLYAMIDE PA6.6 HEAT STABILIZED
MATERIAL OF THE FASTON (6,3x0,8)	ZINC PLATED STEEL
MATERIAL OF THE SCREW (M4)	ZINC PLATED STEEL

Tolerances for linear dimensions

from - to mm	0.1	6	6.1	40	40.1	150	150	300	
	± 0.1		± 0.2		± 0.3		± 0.4		

DESCRIPTION HY 508 V/3F



DATE
30.03.2017

HY508/2 V/3F: Is a kit product consisting of:
HY508 V/3F x 2
HY508/1 x 1

HY508/3 V/3F: Is a kit product consisting of:
HY508 V/F x 3
HY508/1 x 1