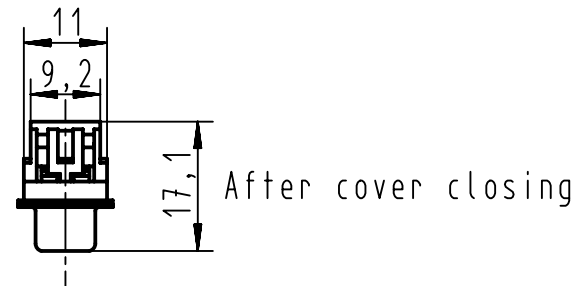
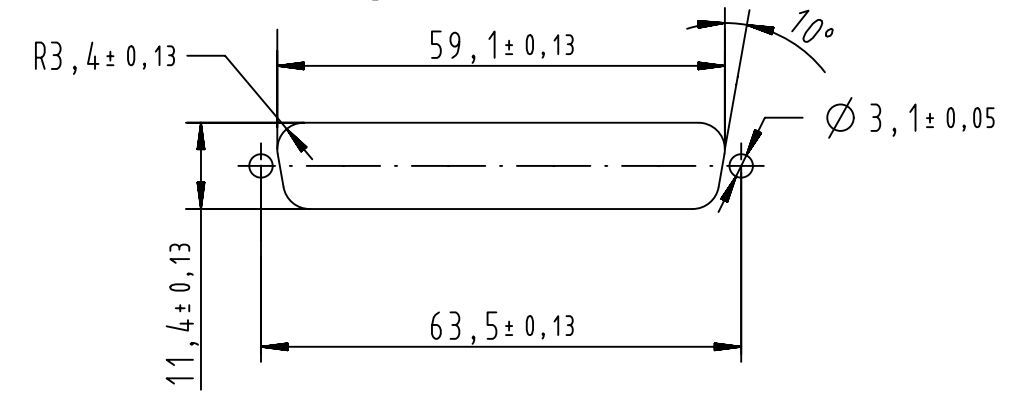
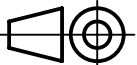


Recommended panel cutout dimensions
for rear mounting
According to CECC 75 301-802



		 All Dimensions in mm Original Size DIN A4		Scale 1:1	Free size tol.		Ref.		
09664187500		PL3		Created by DOUGE		Inspected by BAGDIKIAN	Standardisation HOFFMANN	Date 2013-04-23	State Final Release
09664186500		PL2		Title D-Sub IDC 37P female straight		Doc-Key / ECM-Nr. 100527241/UGD/001/A 5300000858839			
Part number		Performance level		Type TB		Number 0966418X500		Rev. A	Page 1/1