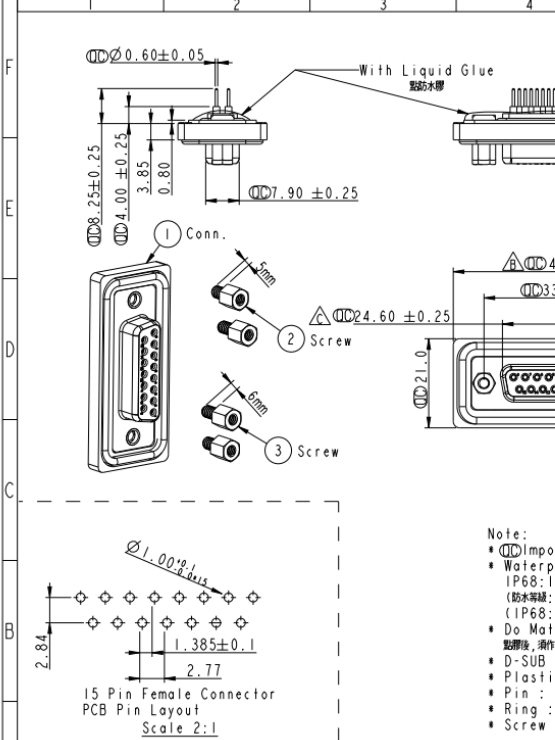


REV.	ECN NO.	DATE	SIGN	DESCRIPTION
B	LEN-850010	2008/05/05	Allan	Modify Tolerance
C	LEN1390091	2013/06/13	Tony_leng	Change 24.66 To 24.60



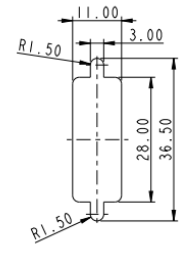
ALTW
CONFIDENTIAL
2013-06-13
R&D DEPT.

ALTW
DCC DEPT.
CONFIDENTIAL
2013.09.05
ISSUED



Screw L=5.0 For Panel Thickness Under 1.2mm
適用板厚為1.2mm以下

Screw L=6.0 For Panel Thickness Between 1.2-2.0mm
適用板厚為1.2-2.0mm



Recommended Panel Cut-Out
建議挖孔尺寸

- Note:
- Important Dimension.
 - Waterproof Rate : IP68
IP68: 1M of depth of water 24 hours
(防水等級: IP68)
(IP68: 1米水深24小時)
 - Do Mating Test After Glued
點膠後, 須作對插測試
 - D-SUB Conn. : Black Core, PBT
 - Plastic Jacket : Black, Nylon+GF
 - Pin : Copper Alloy, Gold Plated
 - Ring : Light Blue, Silicone
 - Screw : Copper Alloy, Nickel Plated, #4-40 UNC

UNIT: mm	TOLERANCE
.x	±0.25
.xx	±0.1
.xxx	±0.05
ANGLES	±1°

TITLE			
D-SUB Conn.			
Panel Screw DB15P F Conn. F Pin			
SCALE	SIZE	SHEET	
1:1	A4	1 of 1	
REV.	REV.	QC: Inspection item	
C	A.4		

Amphenol LTW
安費諾亮泰企業股份有限公司

ITEM NO.	DRAWN BY	DATE
SDB-15PFFP-SL8001	Tony_leng	2013-06-13
ENG. NO.	CHECKED BY	DATE
SDB-15PFFP-SL8001	Yulong	2013-06-13
CUSTOMER	APPROVED BY	DATE
ALTW	Victor	2013-06-13

THIS DOCUMENT IS THE PROPERTY OF AMPHENOL LTW. IT IS CONFIDENTIAL AND NOT TO BE DISCLOSED OR REPRODUCED IN ANY MANNER WITHOUT THE WRITTEN PERMISSION OF AMPHENOL LTW. (此文件為安費諾亮泰企業股份有限公司之財產，其內容屬機密，未經本公司書面許可，不得向任何單位或個人透露、複製、發行、轉讓或用於其他目的。)