

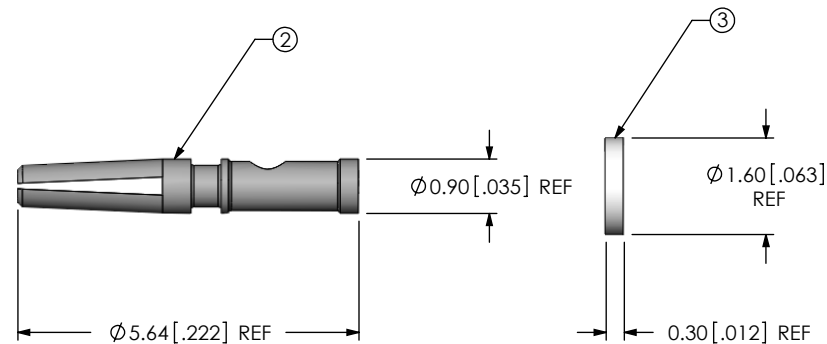
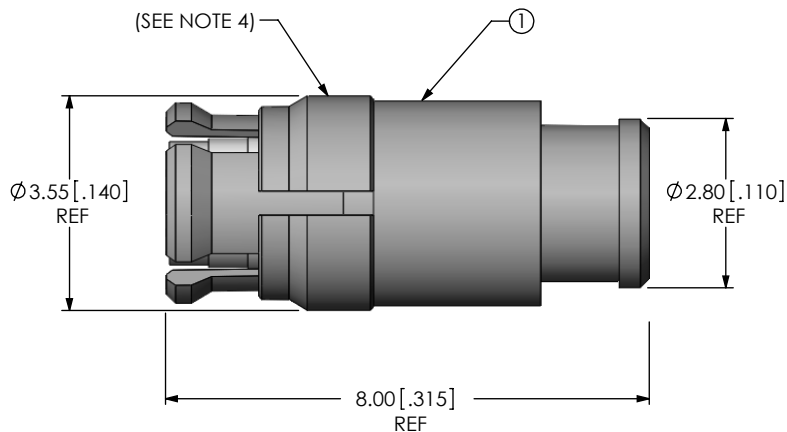
THIS PRODUCT MANUFACTURED WITH LEAD-FREE PROCESSING

DO NOT SCALE FROM THIS PRINT

DESIGNED & DIMENSIONED IN MILLIMETERS [INCHES]

SMP-J-C-XX-ST-CS5

GENDER -J: JACK
 TYPE -C: CABLE
 TERMINATION -CS5: MWC-2550-01 CABLE
 ORIENTATION -ST: STRAIGHT
 PLATING SPECIFICATION
 -HG: HEAVY GOLD / GOLD
 30µ" Au / 50µ" Ni MIN ON PIN
 10µ" Au / 50µ" Ni MIN ON OUTER CONTACT
 -GF: GOLD / FLASH GOLD
 10µ" Au / 50µ" Ni MIN ON PIN
 3µ" Au / 50µ" Ni MIN ON OUTER CONTACT
 (SEE TABLE 1)



NOTES:

- ① REPRESENTS A CRITICAL DIMENSION.
- PRODUCT TO BE PACKAGED PER PACKING STANDARD CO-HD-WI-3040-M.
 TRAY: TY-SMA001-1
 COVER: TY-SMA001-2
 200 PARTS PER TRAY (2 PARTS PER POCKET)
- SOCKET & INSULATOR TO BE PACKAGED SEPARATELY.
- THE RING IS LOOSE AND CAN MOVE, 1.5 LBS MIN FORCE TO REMOVE.



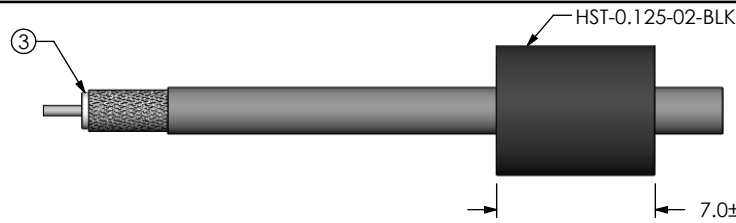
ITEM	COMPONENT	-HG	-GF
1	SUB ASSEMBLY	SUB-SMP-J-C-GF-ST-CS5	SUB-SMP-J-C-FN-ST-CS5
2	SOCKET	SMP-J-C-H-ST-CA5-SKT	SMP-J-C-G-ST-CA5-SKT
3	INSULATOR	SMA-INS-018	

UNLESS OTHERWISE SPECIFIED, DIMENSIONS ARE IN MILLIMETERS. TOLERANCES ARE: DECIMALS ANGLES X.X: ±0.3 [.01] 5° X.XX: ±0.13 [.005] X.XXX: ±0.051 [.0020]	PROPRIETARY NOTE THIS DOCUMENT CONTAINS INFORMATION CONFIDENTIAL AND PROPRIETARY TO SAMTEC, INC. AND SHALL NOT BE REPRODUCED OR TRANSFERRED TO OTHER DOCUMENTS OR DISCLOSED TO OTHERS OR USED FOR ANY PURPOSE OTHER THAN THAT WHICH IT WAS OBTAINED WITHOUT THE EXPRESSED WRITTEN CONSENT OF SAMTEC, INC.		
		520 PARK EAST BLVD., NEW ALBANY, IN 47150 PHONE: 812-944-6733 FAX: 812-948-5047 e-Mail: info@SAMTEC.com code 55322	
MATERIAL: DO NOT SCALE DRAWING SHEET SCALE: 8:1 SUB ASSEMBLY: BODY & RING: BeCu INSULATOR: PTFE SOCKET: BeCu INSULATOR: PTFE		DESCRIPTION: SMP ST JACK FOR RF25S CABLE - 50 OHM DWG. NO. <h2 style="text-align: center;">SMP-J-C-XX-ST-CS5</h2>	
		BY: ALVIN W	07/16/2011
		SHEET 1 OF 2	

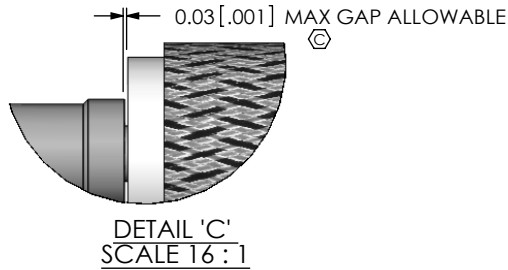
REVISION A



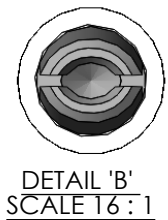
IN-PROCESS 1
STRIP AND TIN INNER CONDUCTOR



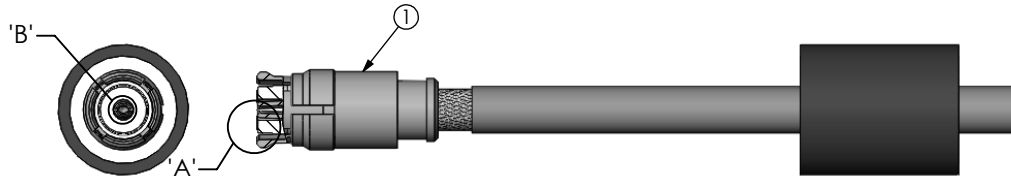
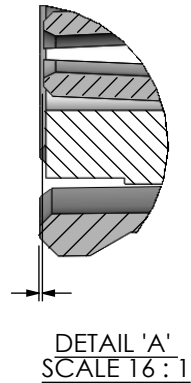
IN-PROCESS 2
ADD INSULATOR AND HEAT SHRINK



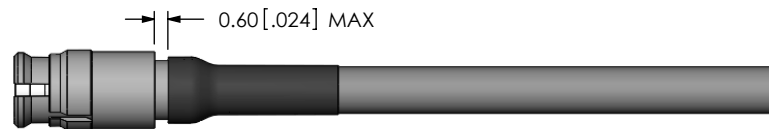
IN-PROCESS 3
SOLDER SIGNAL CONTACT



0.03^{+0.08}_{-0.04} [.001^{+0.003}_{-.002}]
(TO CENTER CONTACT)



IN-PROCESS 4
ADD SUB ASSEMBLY & SOLDER BRAID



IN-PROCESS 5
APPLY HEAT TO SHRINK TUBING

PROPRIETARY NOTE
THIS DOCUMENT CONTAINS INFORMATION
CONFIDENTIAL AND PROPRIETARY TO
SAMTEC, INC. AND SHALL NOT BE REPRODUCED
OR TRANSFERRED TO OTHER DOCUMENTS OR
DISCLOSED TO OTHERS OR USED FOR ANY
PURPOSE OTHER THAN THAT WHICH IT WAS
OBTAINED WITHOUT THE EXPRESSED WRITTEN
CONSENT OF SAMTEC, INC.

DO NOT SCALE DRAWING

SHEET SCALE: 8:1

samtec

520 PARK EAST BLVD, NEW ALBANY, IN 47150
PHONE: 812-944-6733 FAX: 812-948-5047
e-Mail info@SAMTEC.com code 55322

DESCRIPTION:
SMP ST JACK FOR RF25S CABLE - 50 OHM

DWG. NO.
SMP-J-C-XX-ST-CS5

BY: ALVIN W 07/16/2011 SHEET 2 OF 2