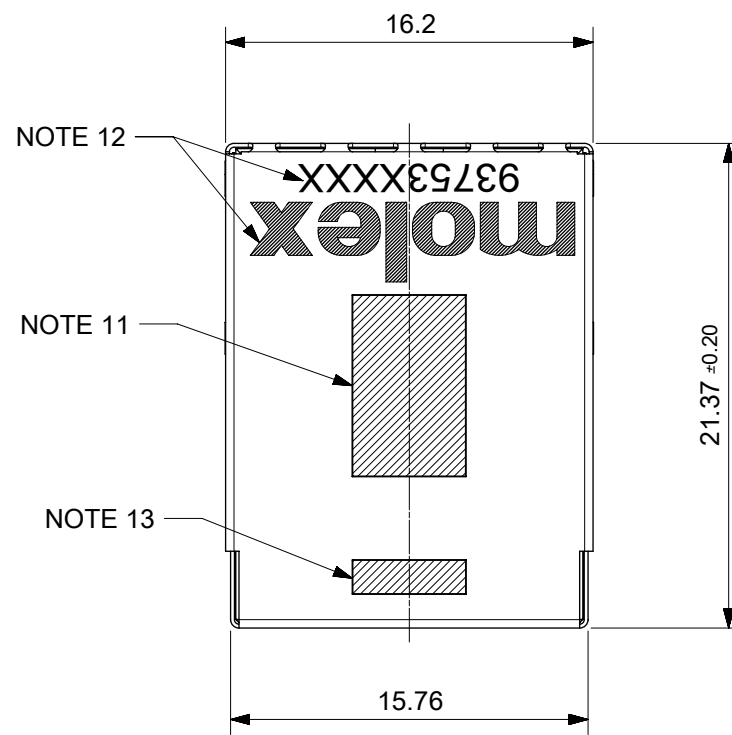
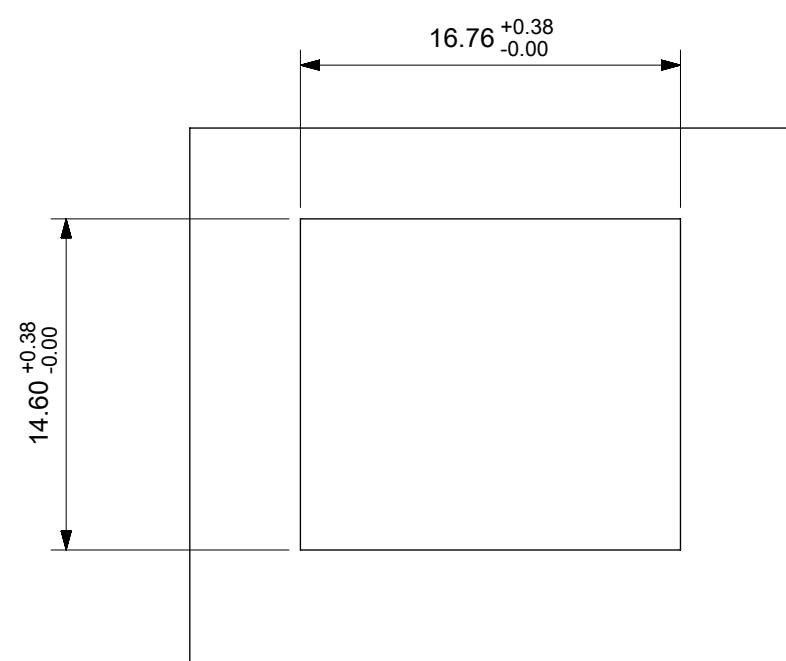
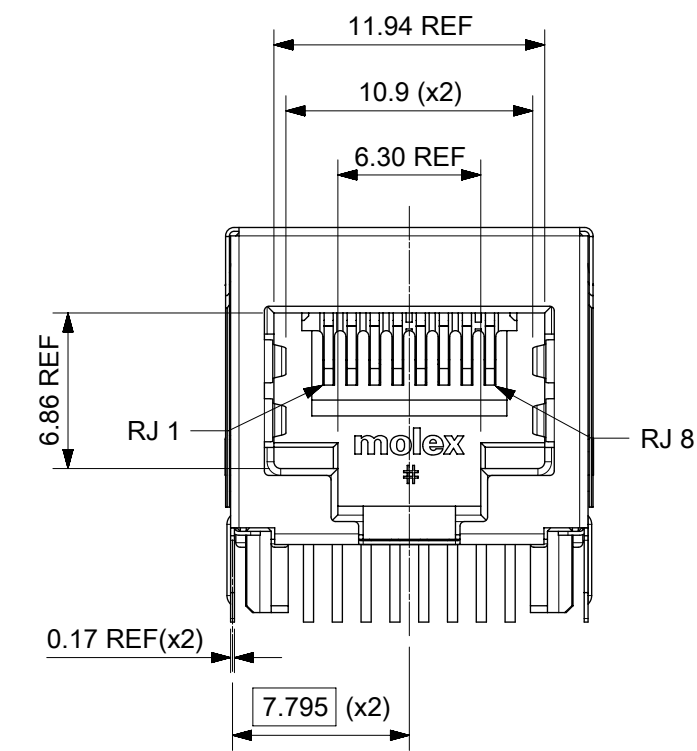
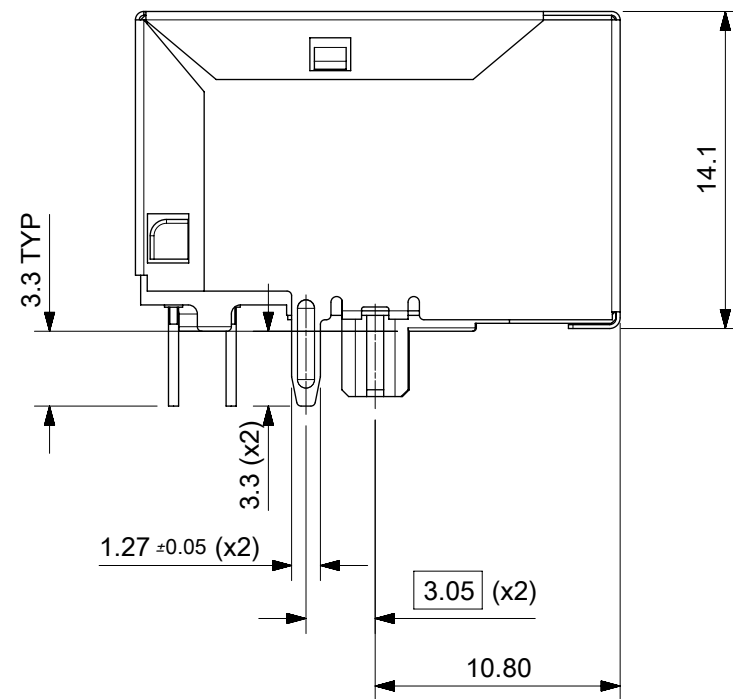


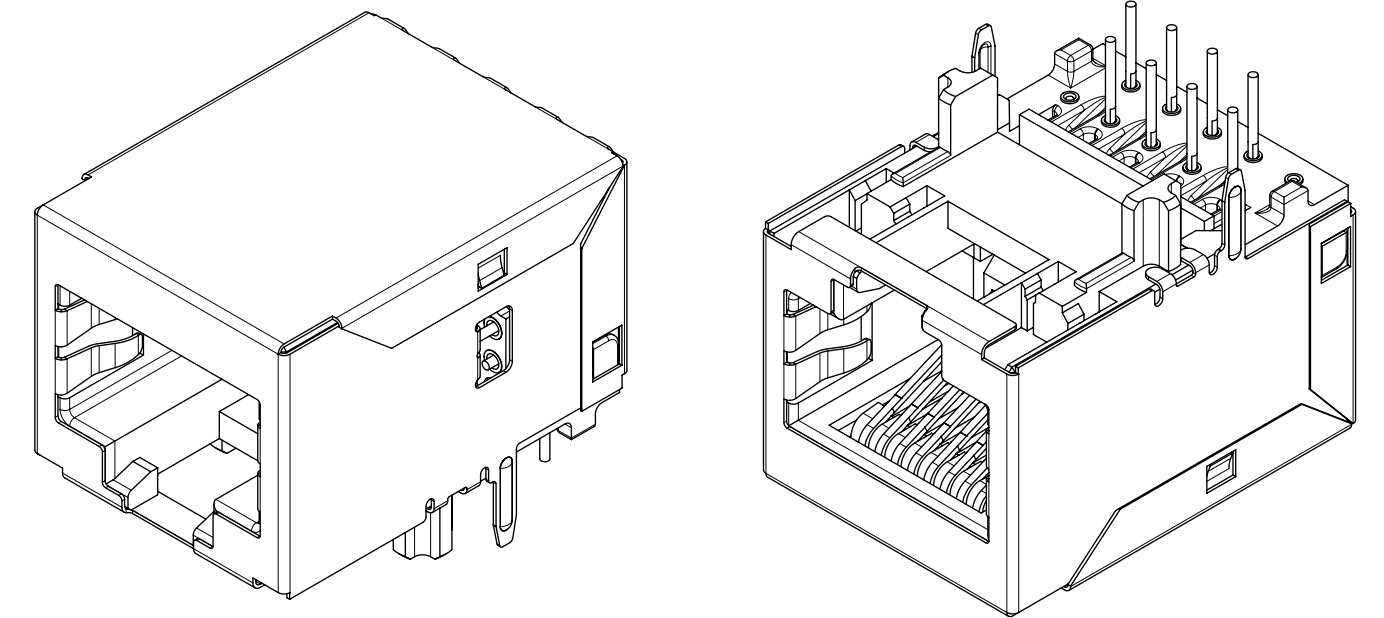
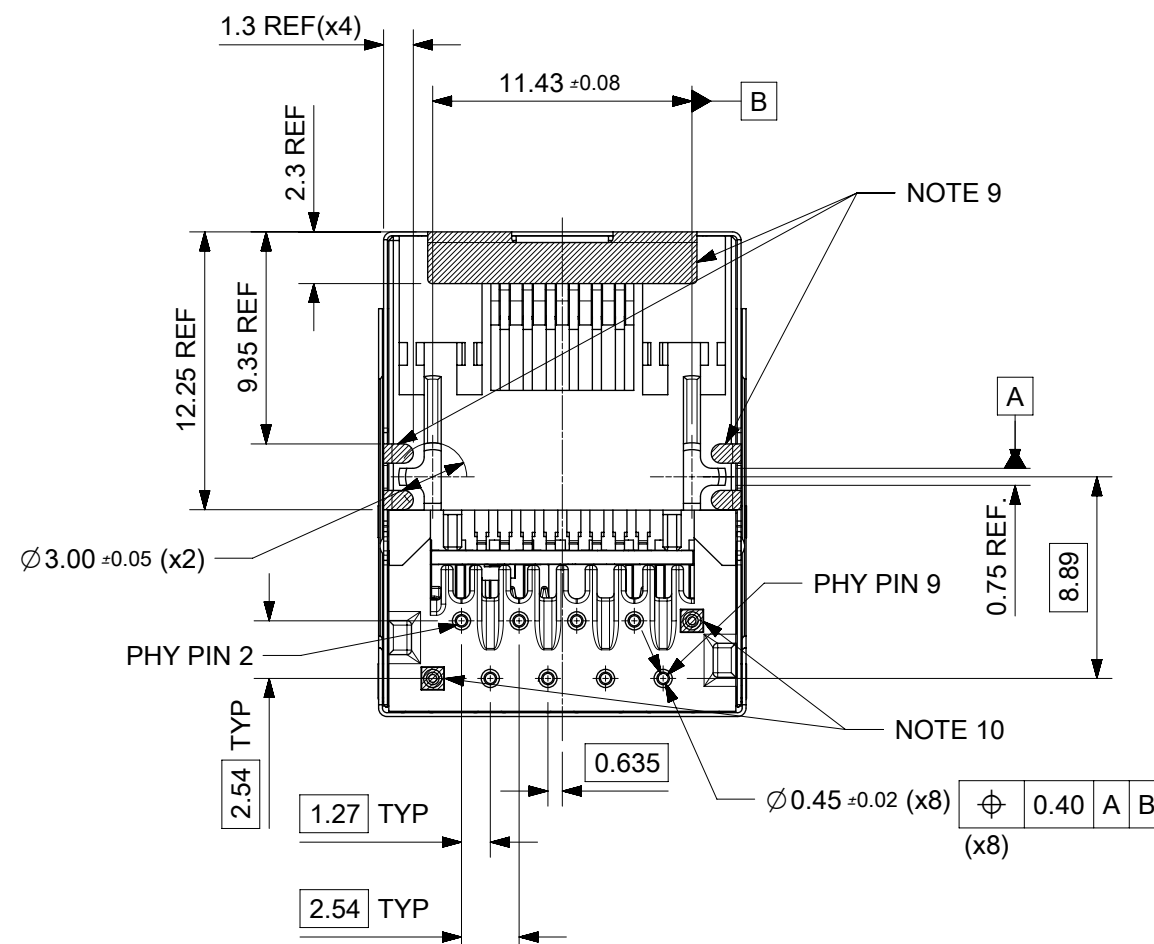
STANDARD PROFILE MAGNETIC JACK  
FAST ETHERNET W/O LEDS  
AND W/O SHIELD TABS TOP AND SIDE



- NOTES:
- SHIELD MATERIAL: 0.17mm THICK BRASS PRE-PLATED WITH NICKEL  
SOLDER TABS POST DIPPED WITH MIN. 1.27µm TIN
  - HOUSING MATERIAL: LCP, BLACK, UL 94V-0
  - TERMINAL MATERIAL: PHOSPHOR BRONZE  
RJ45 CONTACTS PLATING: BASE NICKEL PLATED WITH GOLD  
FLASH OVER PALLADIUM NICKEL. REFER TO 934620001 PSP  
PHY SOLDER TAILS: COPPER ALLOY
  - MATING INTERFACE ACCORDING TO IEC 60603-7 & TIA-1096-A
  - PRODUCT SPECIFICATION: 934620001 PSP
  - PACKAGING SPECIFICATION: 934620001 PSK TAPE & REEL
  - STAND OFF TO SYSTEM BOARD 0.30mm MINIMUM
  - RECOMMENDED PCB THICKNESS: 1.57mm
  - SHIELD: AVOID ROUTING TRACES  
OR PLACING ANY VIAS BELOW THESE AREAS
  - PIN NOT ASSEMBLED
  - AREA FOR PICK AND PLACE: 5.0mm X 8.0mm
  - INSCRIPTION MARKED BY LASER:  
1st : MOLEX  
2nd : P/N (SEE BOM)
  - DATE CODE(DAY/WEEK/YEAR)
  - MATERIAL COMPLIANT TO RoHS DIRECTIVE 2002/95/EC

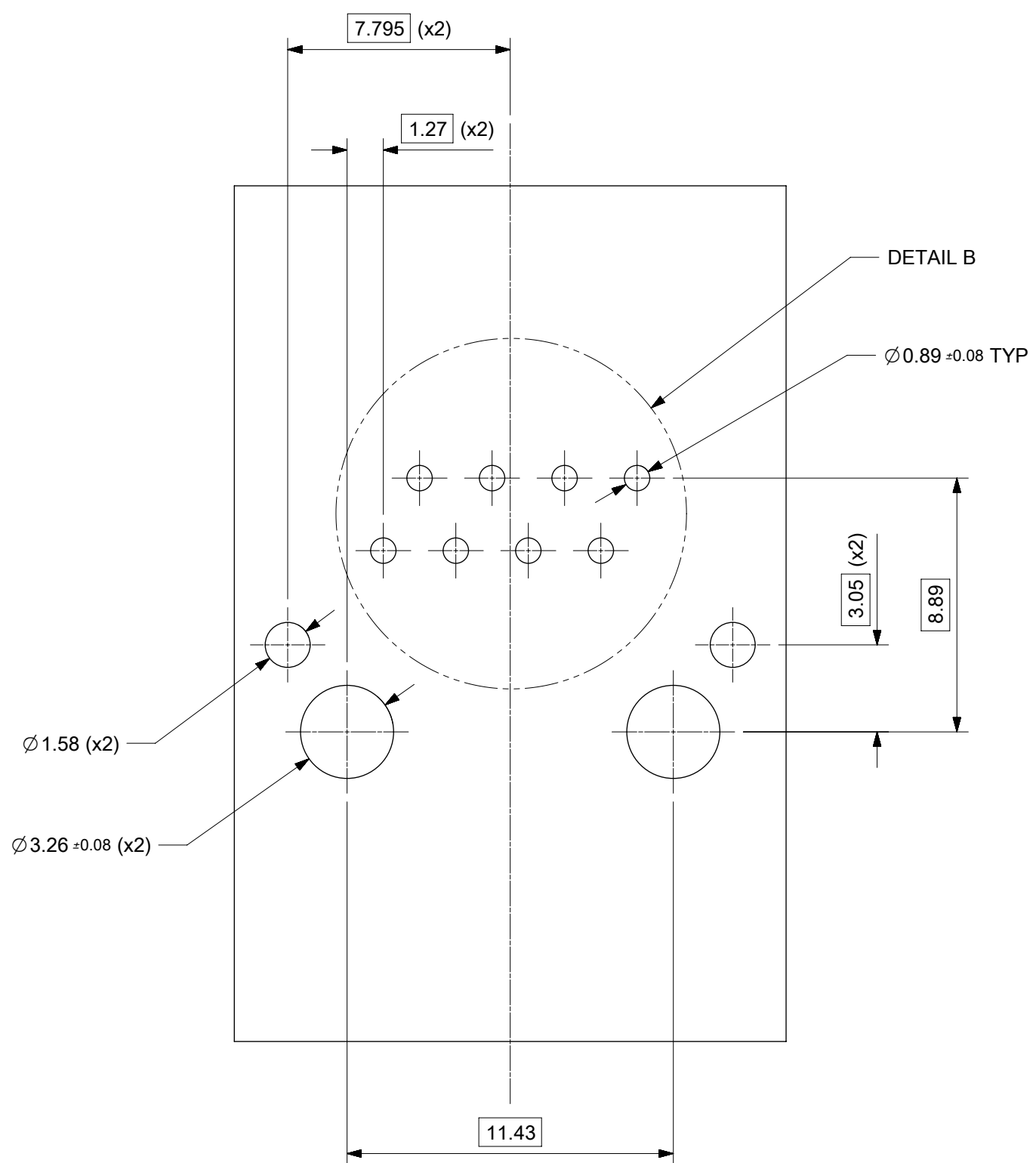


SUGGESTED PANEL CUT-OUT

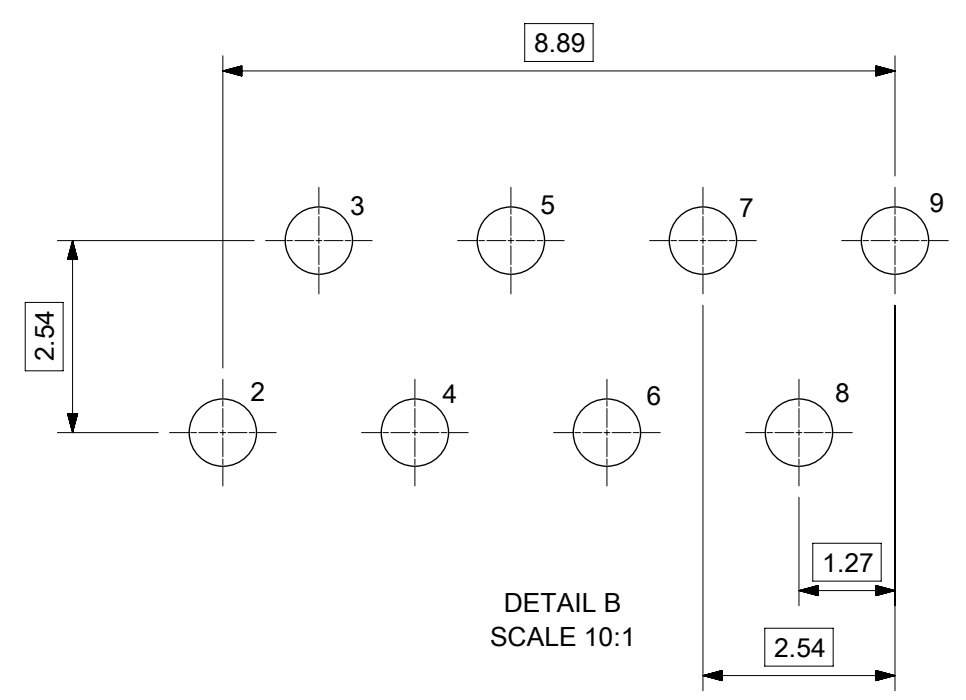


THIS DRAWING CONTAINS INFORMATION THAT IS PROPRIETARY TO MOLEX ELECTRONIC TECHNOLOGIES, LLC AND SHOULD NOT BE USED WITHOUT WRITTEN PERMISSION

EC NO: 114553 DRWN: DSHEA CHKD: DBYRNES APPR: STGRIFFIN	2017/03/15 2017/04/14 2017/04/25	GENERAL TOLERANCES (UNLESS SPECIFIED) ANGULAR TOL ± 2.0 °	DIMENSION UNITS: MM SCALE: 3:1		
	4 PLACES ± 3 PLACES ± 2 PLACES ± 0.1 1 PLACE ± 0.2 0 PLACES ±	DRWN BY: KREILLY DATE: 2015/10/01	CHKD BY: DBYRNES DATE: 2016/09/19		PRODUCT CUSTOMER DRAWING
	DRAFT WHERE APPLICABLE MUST REMAIN WITHIN DIMENSIONS	APPR BY: STGRIFFIN DATE: 2016/10/07	DRAWING SIZE: A2 THIRD ANGLE PROJECTION		SERIES: 93753 MATERIAL NUMBER: SEE CHART CUSTOMER: GENERAL MARKET
	B	DOCUMENT NUMBER: 937530001 DOC TYPE: PSD DOC PART: 000 SHEET NUMBER: 1 OF 3			



SUGGESTED BOARD LAYOUT  
FAST ETHERNET VERSION  
COMPONENT SIDE  
ALL DIMENSIONS ARE REFERENCE DIMENSIONS



PIN CONFIGURATION  
FOR FAST ETHERNET VERSION

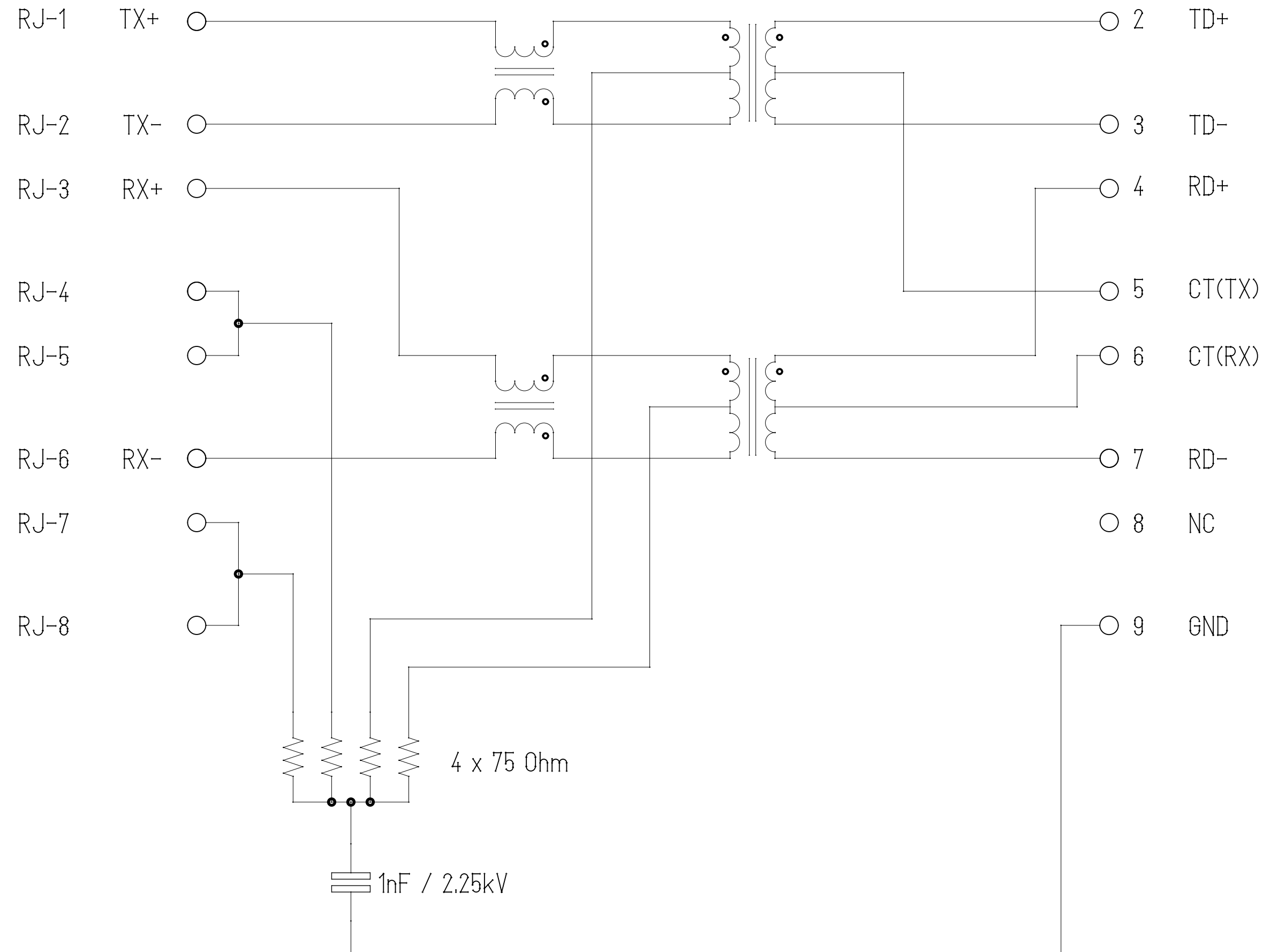
PART NUMBER 93753-5320

THIS DRAWING CONTAINS INFORMATION THAT IS PROPRIETARY TO MOLEX ELECTRONIC TECHNOLOGIES, LLC AND SHOULD NOT BE USED WITHOUT WRITTEN PERMISSION												
REVISED	EC NO: 114553	2017/03/15	GENERAL TOLERANCES (UNLESS SPECIFIED)	DIMENSION UNITS	SCALE	<b>molex</b> <sup>®</sup>						
	DRWN: DSHEA	2017/04/14	ANGULAR TOL ± 2.0 °	MM	5:1							
	CHKD: DBYRNES	2017/04/25	4 PLACES ±	DRWN BY	DATE	STD MXMAG 4 CORE FE						
	REV / APPR: STGRIFFIN		3 PLACES ±	KREILLY	2015/10/01							
			2 PLACES ± 0.1	CHK'D BY	DATE	PRODUCT CUSTOMER DRAWING						
			1 PLACE ± 0.2	DBYRNES	2016/09/19							
		0 PLACES ±	APPR BY	DATE	SERIES MATERIAL NUMBER CUSTOMER							
		DRAFT WHERE APPLICABLE MUST REMAIN WITHIN DIMENSIONS	STGRIFFIN	2016/10/07							93753	SEE CHART
B			DRAWING SIZE	THIRD ANGLE PROJECTION	DOCUMENT NUMBER			DOC TYPE	DOC PART	SHEET NUMBER		
			A2		937530001			PSD	000	2 OF 3		

WIRE-SIDE / RJ-45

ETHERNET MAGNETICS

PHY-SIDE / PCB SIDE



Shield

ETHERNET TERMINALS

Description	Value	
OCL @100kHz, 0.1V, 8mA DC bias (-40°C to +85°C)	350µH min.	
Turns ratio	1CT:1CT	
Transmission characteristics @ 25°C, all four pairs		
Insertion Loss		
Frequency (MHz)	Limits (dB max.)	Typical Values (dB max.)
1.0-9.9 MHz	0.4+0.1*log(F)	0.5 @ 10MHz
10-49.9 MHz	0.5+0.3*log(F/10)	0.7 @ 50MHz
50-79.9 MHz	1+1.4*log(F/80)	1.0 @ 80MHz
80-100 MHz	1.3+3*log(F/100)	1.3 @ 100MHz
Return Loss		
Frequency (MHz)	Limits (dB min.)	Typical Values (dB min.)
1.0-39.9 MHz	18	18 @ 40MHz
40-100 MHz	12-20*log(F/80)	10 @ 100MHz
CMR		
Frequency (MHz)	Limits (dB min.)	Typical Values (dB min.)
1.0-100MHz	30	30 @ 100MHz
Next		
Frequency (MHz)	Limits (dB min.)	Typical Values (dB min.)
1.0-39.9MHz	35	35 @ 40MHz
40-100MHz	33-20*log(F/50)	27 @ 100MHz
Isolation PHY to wire side	2.25kVDC/60sec	

THIS DRAWING CONTAINS INFORMATION THAT IS PROPRIETARY TO MOLEX ELECTRONIC TECHNOLOGIES, LLC AND SHOULD NOT BE USED WITHOUT WRITTEN PERMISSION

REVISED EC NO: 114553 DRWN: DSHEA CHKD: DBYRNES REV APPR: STGRIFFIN	2017/03/15	GENERAL TOLERANCES (UNLESS SPECIFIED)	DIMENSION UNITS	SCALE	
	2017/04/14	ANGULAR TOL ± 2.0 °	MM	1:1	
	2017/04/25	4 PLACES ±	DRWN BY	DATE	
		3 PLACES ±	KREILLY	2015/10/01	
		2 PLACES ± 0.1	CHK'D BY	DATE	
	1 PLACE ± 0.2	DBYRNES	2016/09/19		
	0 PLACES ±	APPR BY	DATE		
		STGRIFFIN	2016/10/07		
		DRAFT WHERE APPLICABLE MUST REMAIN WITHIN DIMENSIONS	DRAWING SIZE	THIRD ANGLE PROJECTION	PRODUCT CUSTOMER DRAWING SERIES: 93753 MATERIAL NUMBER: SEE CHART CUSTOMER: GENERAL MARKET
			A2		DOCUMENT NUMBER: 937530001 DOC TYPE: PSD DOC PART: 000 SHEET NUMBER: 3 OF 3