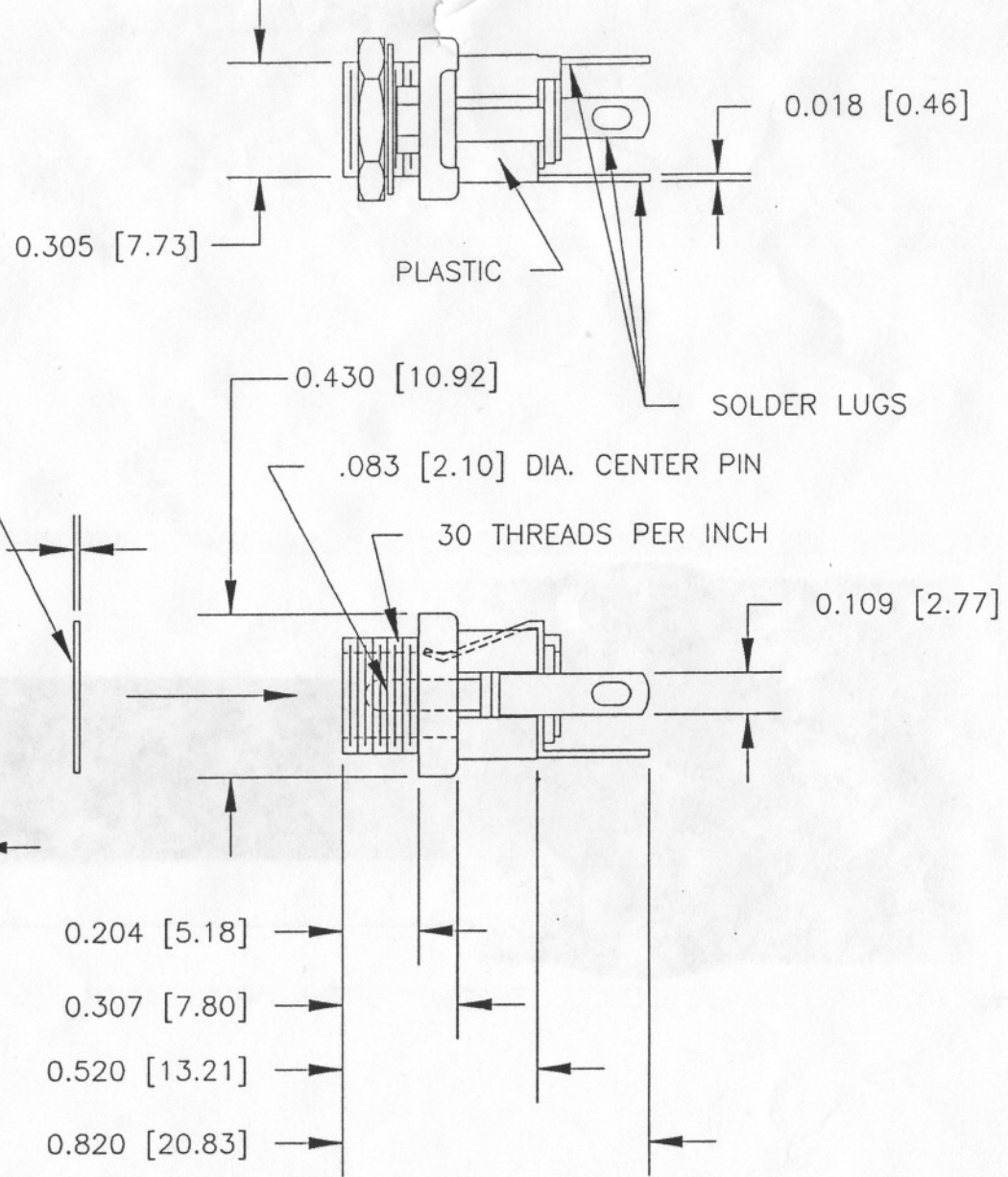


NOTES:

- 1) CODE: GREEN
- 2) FOR USE WITH THE 27-130, (5.5mm X 2.1mm DC PLUG)
- 3) MOUNTING HOLE: .305 [7.74] DIA.
- 4) MOUNTING DEPTH: 1/8", .125, [3.17] MAX.
- 5) MATERIAL:  
 BODY: PLASTIC (BLACK)  
 MOUNTING SHAFT, LUGS & HARDWARE: NICKEL-PLATED BRASS
- 6) HARDWARE: (ATTACHED)  
 ONE MOUNTING NUT  
 ONE WASHER
- 7) PACKAGING: POLY BAG WITH MCM HEADER  
 ONE JACK PER BAG
- 8) TOLERANCE:  $\pm 1/32$ , .03, [.8]
- 9) DIMENSIONS ARE IN INCHES [MILLIMETERS]



MCM ELECTRONICS  
 PRODUCT SPECIFICATION

DRAWN BY: *ST*

APPROVED BY: *GC*

SCALE: 2X

Copyright: MCM Electronics  
 This is an original publication of MCM Electronics for the sole use of its designated agents and no part or portion thereof may be reproduced in any form whatsoever without written authorization from MCM Electronics.

DATE:

REVISION

MCM PART# 27-750

DESCRIPTION: 2.1mm DC JACK

DATE: 2/27/90