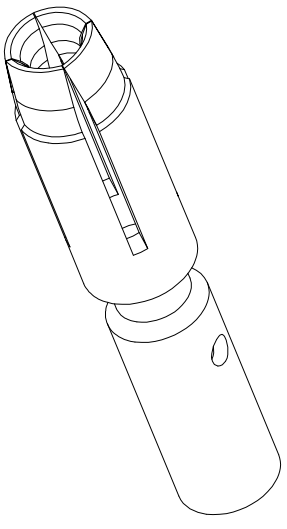
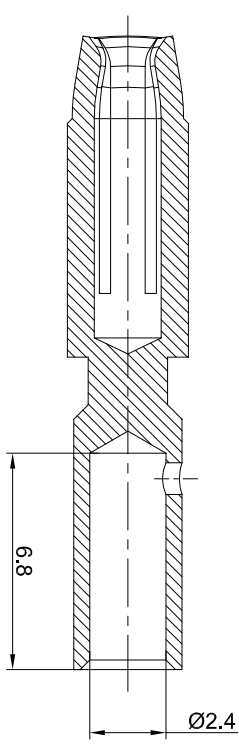
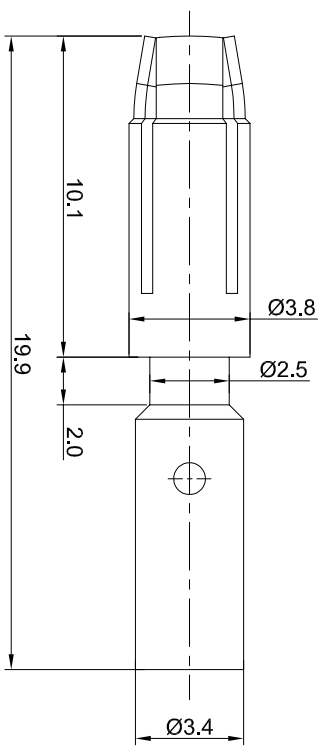
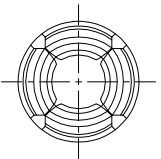


REVISIONS					
REV	ECO	DESCRIPTION	DATE	BY	APPR
B1	-	RELEASE NEW DWG FORMAT	May:12,2015	DRACK	TOMMY
B2	-	UPDATE THE RATED CURRENT	Mar:30,2016	DRACK	TOMMY
B3	-	UPDATE THE CRIMP RANGE	Jul,10,2017	White	TOMMY



- NOTES: UNLESS OTHERWISE SPECIFIED
1. MATERIAL: COPPER ALLOY, GOLD PLATED
 2. SPECIFICATIONS:
 - 2.1 RATED CURRENT: 30 AMPS
 - 2.2 CONTACT RESISTANCE: <3 milliohm
 - 2.3 AVAILABLE WIRE RANGE: 14AWG~20AWG
 - 2.4 ROHS COMPLIANT
 3. ALL DIMENSIONS ARE FOR REFERENCE USE ONLY.

QUANTITY	SEE PART NUMBER CHART	PART NUMBER	DESCRIPTION	ITEM	
MATERIALS LIST					
UNLESS OTHERWISE SPECIFIED					
1) All dimensions are in millimeters.					
2) Tolerances are as follows:					
1 Pt. DEC 20.30 Fractions .1754					
3 Pt. DEC 20.08 Angles .1°					
3) Note reference = A					
MATERIAL SPECIFICATIONS:					
PROCESS SPECIFICATIONS:					
NEXT ASSY:					
SIGNATURES		DATE			
DRAWN:	Wjh	Jul,10,2017			
CHECKED:					
ENGINEER:					
APPROVAL:					
CUSTOMER:	Socket contact:2.0mm Crimp 14~20AWG				
THIS DRAWING IS SUPPLIED FOR INFORMATION ONLY. IT IS NOT TO BE USED FOR PRODUCTION. SPECIFICATIONS AND PERFORMANCE DATA ARE THE PROPERTY OF AMPHENOL CORPORATION. NO PARTS OR REPRODUCTION ARE ALLOWED. ALL MANUFACTURING VARIATIONS ARE ACCEPTED.					
SCALE:	NONE	SHEET:	1	OF:	1

Amphenol

Shie Systems - www.amphenol-shie.com
44724 Mckley Drive
Clinton Township, MI 48036