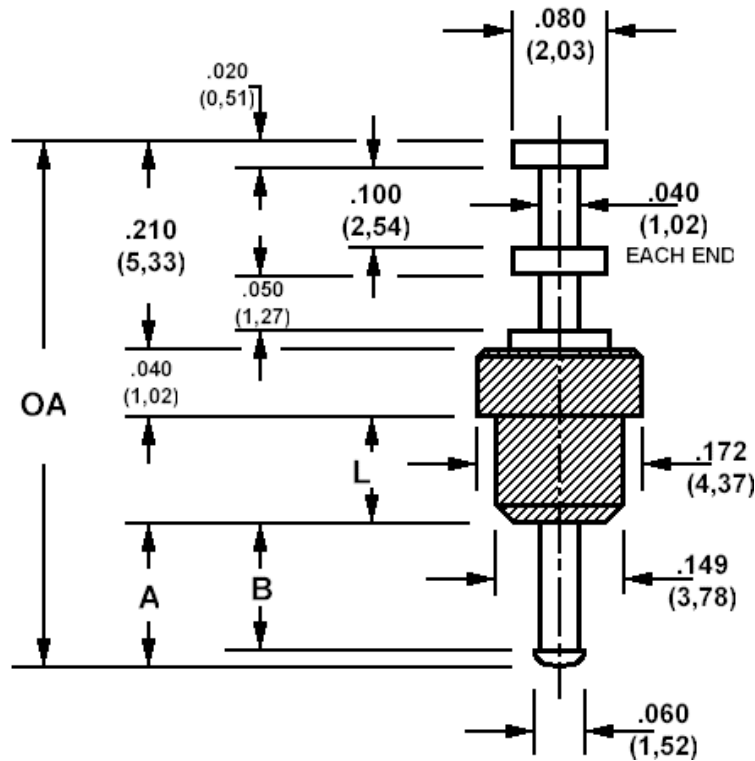


## 571-4182 Insulated solder terminal, Turreted, Feed thru

Recommended mounting hole .136 (3,45)



How to order code

**571-4182-XX-YY-19**

Basic Part No (XX = Panel thickness, YY = plating finish. See tables for options)

Basic Part No.		OA (ref)	L	Panel Thickness (XX)
571-4182	-01	.500 (12,70)	.100 (2,54)	.031 (0,79) to .062 (1,59)
	-02	.500 (12,70)	.125 (3,18)	.031 (0,79) to .085 (2,16)
	-03	.500 (12,70)	.165 (4,19)	.031 (0,79) to .125 (3,18)

Additional Dimensions			
Basic Part No.		A	B
571-4182	-01	.150 (3,81)	.120 (3,05)
	-02	.125 (3,18)	.095 (2,41)
	-03	.085 (2,16)	.055 (1,40)

Component	Material	Finish (YY)		
		-01	-04	-05
Terminal	Brass	Silver	Electro Tin	Electro Solder
Insulator	Teflon - white			

Additional Specifications	Panel thickness		
	-01	-02	-03
Flashover VRMS at Sea Level	3000	3000	3000
Capacitance (pF)	0.4	0.4	0.4

Teflon is a registered trademark of Dupont