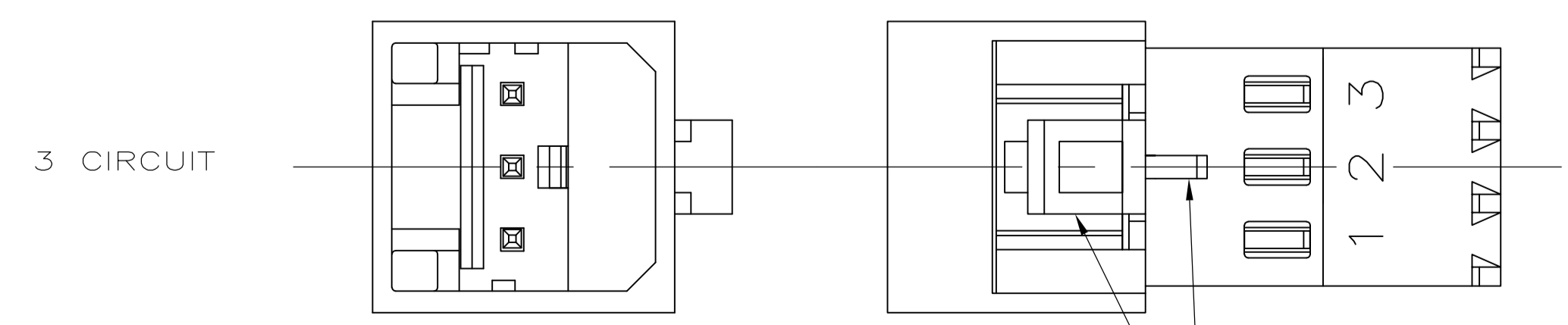
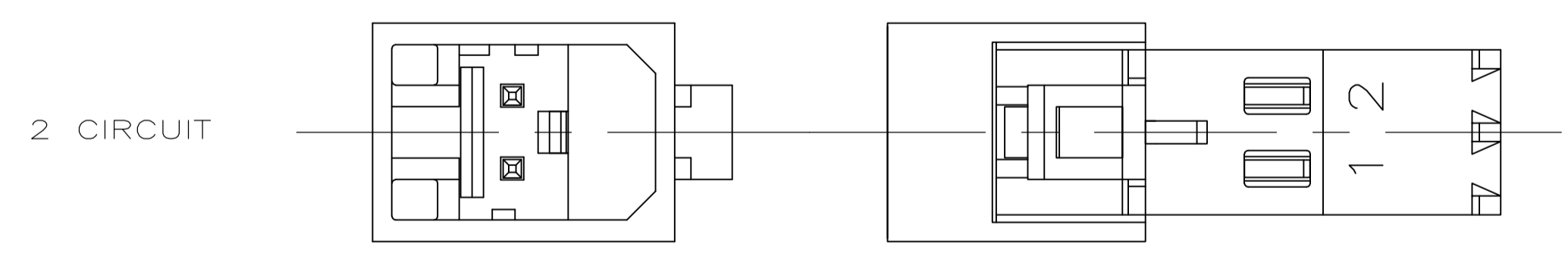


SECTION A-A



DETAIL A












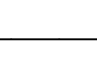

DETAIL B
SCALE 10:1
ALTERNATE CONFIGURATION

- MATERIAL:
HOUSING- NYLON UL94V-2 (WHITE).
CONTACTS- 0.30 [.012] THK COPPER ALLOY
PLATING : BRIGHT TIN-LEAD FOR 0.00203[.000080] MIN THK FOR 647001-2 THRU 1-647001-9.
MATTE TIN 0.00203[.000080] MIN THK. FOR 3-647001-2 THRU 4-647001-9.
- 2 CONTACTS ACCEPT 24 AWG (0.2 mm²) TIN PLATED SOLID, CONCENTRIC FUSED STRANDED, OR CONCENTRIC STRANDED (7 AND 19 STRAND) WIRE WITH 1.52 [.060] MAX INSULATION DIAMETER.
- MATES WITH STANDARD MTA-100 CONNECTORS: OF THE SAME CIRCUIT SIZES WITH SIMILARLY PLATED CONTACTS WITH POLARIZING TABS-CIRCUIT SIZES 4-19 ONLY WITHOUT POLARIZING TABS-CIRCUIT SIZES 2 & 3.

DOES NOT MATE WITH MTA-100 CONNECTORS: WITH POLARIZING TABS-CIRCUIT SIZES 2 & 3 ONLY. (SEE DETAIL A)
WITH BLOCKED CIRCUITS -ALL CIRCUIT SIZES. NOT RECOMMENDED FOR MATING WITH MTA-100 CONNECTOR WITHOUT POLARIZING TABS. CIRCUIT SIZES 4-19.
- ACCESSORIES:
REPLACEMENT IDC CONTACTS: 647031-1.
COVERS: SEE TABLE
- QUANTITY OF CENTRALLY POSITIONED RAILS VARIES WITH CIRCUIT SIZE. (SEE TABLE)
LOCATION MAY DIFFER FROM EXAMPLE SHOWN.
- 6 DIMENSIONS IN BRACKETS ARE IN INCHES.
- SIMILAR SIZED LOCK AND SINGLE TAB USED OR CIRCUITS 4 & 5.
- QUANTITY OF GUSSET RIBS VARIES WITH CIRCUIT SIZE (SEE TABLE).
LOCATION MAY DIFFER FROM EXAMPLE SHOWN.
- INNER END RAIL PAIR NOT PRESENT FOR CIRCUIT SIZES 2 OR 3.
- CIRCUIT ID MAY APPEAR FULLY NUMBERED OR SHOWING LOCATION 1 ONLY DEPENDING ON CIRCUIT SIZE.
- OBSOLETE PARTS: OBSOLETE CIS STREAMLINING PER D.RENAUD/D.SINISI
- OBSOLETE PARTS

| | | | | | |
|--|--|-------------------------------|--------------|---|--|
| THIS DRAWING IS A CONTROLLED DOCUMENT. | | DIN S. CARPENTER 07AUG2003 | | TE Connectivity | |
| DIMENSIONS: mm [INCHES] | | CIR: D. BOSSI 07AUG2003 | | NAME MTA-100 POSTED CONNECTOR ASSEMBLY, CLOSED END, 24 AWG | |
| TOLERANCES UNLESS OTHERWISE SPECIFIED: | | APVD D. BOSSI 07AUG2003 | PRODUCT SPEC | | |
| 0 PLC ± - | | APPLICATION SPEC | | | |
| 1 PLC ± - | | SIZE | | | |
| 2 PLC ± 0.20 [.007] | | CAGE CODE | | | |
| 3 PLC ± - | | DRAWING NO | | | |
| 4 PLC ± - | | WEIGHT | | | |
| ANGLES ± - | | A1 00779 C=647001 | | | |
| MATERIAL | | FINISH | | CUSTOMER DRAWING | |
| | | SCALE 5:1 | | SHEET 1 OF 2 | |
| | | | | REV E4 | |

| QTY OF GUSSET RIBS | QTY OF CENTRAL RAILS | MM | IN | MM | IN | MM | IN | NO. OF CIRCUITS | PART NO | | |
|--------------------|----------------------|-------|-------|-------|-------|-------|-------|-----------------|------------|-----------------|---------|
| 4 | 2 | 45.72 | 1.800 | 48.94 | 1.927 | 50.80 | 2.000 | 19 | 4-647001-9 | | |
| 4 | 2 | 43.18 | 1.700 | 46.40 | 1.827 | 48.26 | 1.900 | 18 | 4-647001-8 | | |
| 4 | 2 | 40.64 | 1.600 | 43.86 | 1.727 | 45.72 | 1.800 | 17 | 4-647001-7 | | |
| 4 | 2 | 38.10 | 1.500 | 41.32 | 1.627 | 43.18 | 1.700 | 16 | 4-647001-6 | | |
| 4 | 2 | 35.56 | 1.400 | 38.78 | 1.527 | 40.64 | 1.600 | 15 | 4-647001-5 | | |
| 4 | 2 | 33.02 | 1.300 | 36.24 | 1.427 | 38.10 | 1.500 | 14 | 4-647001-4 | | |
| 4 | 2 | 30.48 | 1.200 | 33.70 | 1.327 | 35.56 | 1.400 | 13 | 4-647001-3 | | |
| 2 | 1 | 27.94 | 1.100 | 31.16 | 1.227 | 33.02 | 1.300 | 12 | 4-647001-2 | | |
| 2 | 1 | 25.40 | 1.000 | 28.62 | 1.127 | 30.48 | 1.200 | 11 | 4-647001-1 | | |
| 2 | 1 | 22.86 | .900 | 26.08 | 1.027 | 27.94 | 1.100 | 10 | 4-647001-0 | | |
| 2 | 1 | 20.32 | .800 | 23.54 | .927 | 25.40 | 1.000 | 9 | 3-647001-9 | | |
| 2 | 0 | 17.78 | .700 | 21.00 | .827 | 22.86 | .900 | 8 | 3-647001-8 | | |
| 0 | 0 | 15.24 | .600 | 18.46 | .727 | 20.32 | .800 | 7 | 3-647001-7 | | |
| 0 | 0 | 12.70 | .500 | 15.92 | .627 | 17.78 | .700 | 6 | 3-647001-6 | | |
| 0 | 0 | 10.16 | .400 | 13.38 | .527 | 15.24 | .600 | 5 | 3-647001-5 | | |
| 0 | 0 | 7.62 | .300 | 10.84 | .427 | 12.70 | .500 | 4 | 3-647001-4 | | |
| 0 | 0 | 5.08 | .200 | 8.30 | .327 | 10.16 | .400 | 3 | 3-647001-3 | | |
| 0 | 0 | 2.54 | .100 | 5.76 | .227 | 7.62 | .300 | 2 | 3-647001-2 | | |
| 4 | 2 | 45.72 | 1.800 | 48.94 | 1.927 | 50.80 | 2.000 | 19 | 4-647001-9 | | |
| 4 | 2 | 43.18 | 1.700 | 46.40 | 1.827 | 48.26 | 1.900 | 18 | 4-647001-8 | | |
| 4 | 2 | 40.64 | 1.600 | 43.86 | 1.727 | 45.72 | 1.800 | 17 | 4-647001-7 | | |
| 4 | 2 | 38.10 | 1.500 | 41.32 | 1.627 | 43.18 | 1.700 | 16 | 4-647001-6 | | |
| 4 | 2 | 35.56 | 1.400 | 38.78 | 1.527 | 40.64 | 1.600 | 15 | 4-647001-5 | | |
| 4 | 2 | 33.02 | 1.300 | 36.24 | 1.427 | 38.10 | 1.500 | 14 | 4-647001-4 | | |
| 4 | 2 | 30.48 | 1.200 | 33.70 | 1.327 | 35.56 | 1.400 | 13 | 4-647001-3 | | |
| 2 | 1 | 27.94 | 1.100 | 31.16 | 1.227 | 33.02 | 1.300 | 12 | 4-647001-2 | | |
| 2 | 1 | 25.40 | 1.000 | 28.62 | 1.127 | 30.48 | 1.200 | 11 | 4-647001-1 | | |
| 2 | 1 | 22.86 | .900 | 26.08 | 1.027 | 27.94 | 1.100 | 10 | 4-647001-0 | | |
| 2 | 1 | 20.32 | .800 | 23.54 | .927 | 25.40 | 1.000 | 9 | 3-647001-9 | | |
| 2 | 0 | 17.78 | .700 | 21.00 | .827 | 22.86 | .900 | 8 | 3-647001-8 | | |
| 0 | 0 | 15.24 | .600 | 18.46 | .727 | 20.32 | .800 | 7 | 3-647001-7 | | |
| 0 | 0 | 12.70 | .500 | 15.92 | .627 | 17.78 | .700 | 6 | 3-647001-6 | | |
| 0 | 0 | 10.16 | .400 | 13.38 | .527 | 15.24 | .600 | 5 | 3-647001-5 | | |
| 0 | 0 | 7.62 | .300 | 10.84 | .427 | 12.70 | .500 | 4 | 3-647001-4 | | |
| 0 | 0 | 5.08 | .200 | 8.30 | .327 | 10.16 | .400 | 3 | 3-647001-3 | | |
| 0 | 0 | 2.54 | .100 | 5.76 | .227 | 7.62 | .300 | 2 | 3-647001-2 | | |
| DUST COVER | STRAIN RELIEF COVERS | MM | | IN | | MM | | IN | | NO. OF CIRCUITS | PART NO |
| 4 | ACCESSORIES | 8 | | 5 | | C | | B | | A | |

 SUPERCEDED
 SUPERCEDED
 SUPERCEDED
 SUPERCEDED
 SUPERCEDED
 SUPERCEDED
 SUPERCEDED
 SUPERCEDED
 SUPERCEDED
 SUPERCEDED
 SUPERCEDED
 SUPERCEDED
 SUPERCEDED
 SUPERCEDED
 SUPERCEDED
 SUPERCEDED
 SUPERCEDED
 SUPERCEDED
 SUPERCEDED
 SUPERCEDED
 SUPERCEDED
 SUPERCEDED
 SUPERCEDED
 SUPERCEDED
 SUPERCEDED
 SUPERCEDED
 SUPERCEDED
 SUPERCEDED
 SUPERCEDED
 SUPERCEDED
 SUPERCEDED
 SUPERCEDED
 SUPERCEDED
 SUPERCEDED
 SUPERCEDED
 SUPERCEDED
 SUPERCEDED
 SUPERCEDED
 SUPERCEDED
 SUPERCEDED
 SUPERCEDED
 SUPERCEDED
 SUPERCEDED
 SUPERCEDED
 SUPERCEDED
 SUPERCEDED
 SUPERCEDED
 SUPERCEDED
 SUPERCEDED
 SUPERCEDED
 SUPERCEDED
 SUPERCEDED
 SUPERCEDED
 SUPERCEDED
 SUPERCEDED
 SUPERCEDED
 SUPERCEDED
 SUPERCEDED
 SUPERCEDED
 SUPERCEDED
 SUPERCEDED
 SUPERCEDED
 SUPERCEDED
 SUPERCEDED
 SUPERCEDED
 SUPERCEDED
 SUPERCEDED
 SUPERCEDED
 SUPERCEDED
 SUPERCEDED
 SUPERCEDED
 SUPERCEDED
 SUPERCEDED
 SUPERCEDED
 SUPERCEDED
 SUPERCEDED
 SUPERCEDED
 SUPERCEDED
 SUPERCEDED
 SUPERCEDED
 SUPERCEDED
 SUPERCEDED
 SUPERCEDED
 SUPERCEDED
 SUPERCEDED
 SUPERCEDED
 SUPERCEDED
 SUPERCEDED
 SUPERCEDED
 SUPERCEDED
 SUPERCEDED
 SUPERCEDED
 SUPERCEDED
 SUPERCEDED
 SUPERCEDED
 SUPERCEDED
 SUPERCEDED
 SUPERCEDED
 SUPERCEDED
 SUPERCEDED
 SUPERCEDED
 SUPERCEDED
 SUPERCEDED
 SUPERCEDED
 SUPERCEDED
 SUPERCEDED
 SUPERCEDED
 SUPERCEDED
 SUPERCEDED
 SUPERCEDED
 SUPERCEDED
 SUPERCEDED
 SUPERCEDED
 SUPERCEDED
 SUPERCEDED
 SUPERCEDED
 SUPERCEDED
 SUPERCEDED
 SUPERCEDED
 SUPERCEDED
 SUPERCEDED
 SUPERCEDED
 SUPERCEDED
 SUPERCEDED
 SUPERCEDED
 SUPERCEDED
 SUPERCEDED
 SUPERCEDED
 SUPERCEDED
 SUPERCEDED
 SUPERCEDED
 SUPERCEDED
 SUPERCEDED
 SUPERCEDED
 SUPERCEDED
 SUPERCEDED
 SUPERCEDED
 SUPERCEDED
 SUPERCEDED
 SUPERCEDED
 SUPERCEDED
 SUPERCEDED
 SUPERCEDED
 SUPERCEDED
 SUPERCEDED
 SUPERCEDED
 SUPERCEDED
 SUPERCEDED
 SUPERCEDED
 SUPERCEDED
 SUPERCEDED
 SUPERCEDED
 SUPERCEDED
 SUPERCEDED
 SUPERCEDED
 SUPERCEDED
 SUPERCEDED
 SUPERCEDED
 SUPERCEDED
 SUPERCEDED
 SUPERCEDED
 SUPERCEDED
 SUPERCEDED
 SUPERCEDED
 SUPERCEDED
 SUPERCEDED
 SUPERCEDED
 SUPERCEDED
 SUPERCEDED
 SUPERCEDED
 SUPERCEDED
 SUPERCEDED
 SUPERCEDED
 SUPERCEDED
 SUPERCEDED
 SUPERCEDED
 SUPERCEDED
 SUPERCEDED
 SUPERCEDED
 SUPERCEDED
 SUPERCEDED
 SUPERCEDED
 SUPERCEDED
 SUPERCEDED
 SUPERCEDED
 SUPERCEDED
 SUPERCEDED
 SUPERCEDED
 SUPERCEDED
 SUPERCEDED
 SUPERCEDED
 SUPERCEDED
 SUPERCEDED
 SUPERCEDED
 SUPERCEDED
 SUPERCEDED
 SUPERCEDED
 SUPERCEDED
 SUPERCEDED
 SUPERCEDED
 SUPERCEDED
 SUPERCEDED
 SUPERCEDED
 SUPERCEDED
 SUPERCEDED
 SUPERCEDED
 SUPERCEDED
 SUPERCEDED
 SUPERCEDED
 SUPERCEDED
 SUPERCEDED
 SUPERCEDED
 SUPERCEDED
 SUPERCEDED
 SUPERCEDED
 SUPERCEDED
 SUPERCEDED
 SUPERCEDED
 SUPERCEDED
 SUPERCEDED
 SUPERCEDED
 SUPERCEDED
 SUPERCEDED
 SUPERCEDED
 SUPERCEDED
 SUPERCEDED
 SUPERCEDED
 SUPERCEDED
 SUPERCEDED
 SUPERCEDED
 SUPERCEDED
 SUPERCEDED
 SUPERCEDED
 SUPERCEDED
 SUPERCEDED
 SUPERCEDED
 SUPERCEDED
 SUPERCEDED
 SUPERCEDED
 SUPERCEDED
 SUPERCEDED
 SUPERCEDED
 SUPERCEDED
 SUPERCEDED
 SUPERCEDED
 SUPERCEDED
 SUPERCEDED
 SUPERCEDED
 SUPERCEDED